

---

Total Place

Sustainable Social Care

Richard Hewitt TaylorHAIG

# Some Context

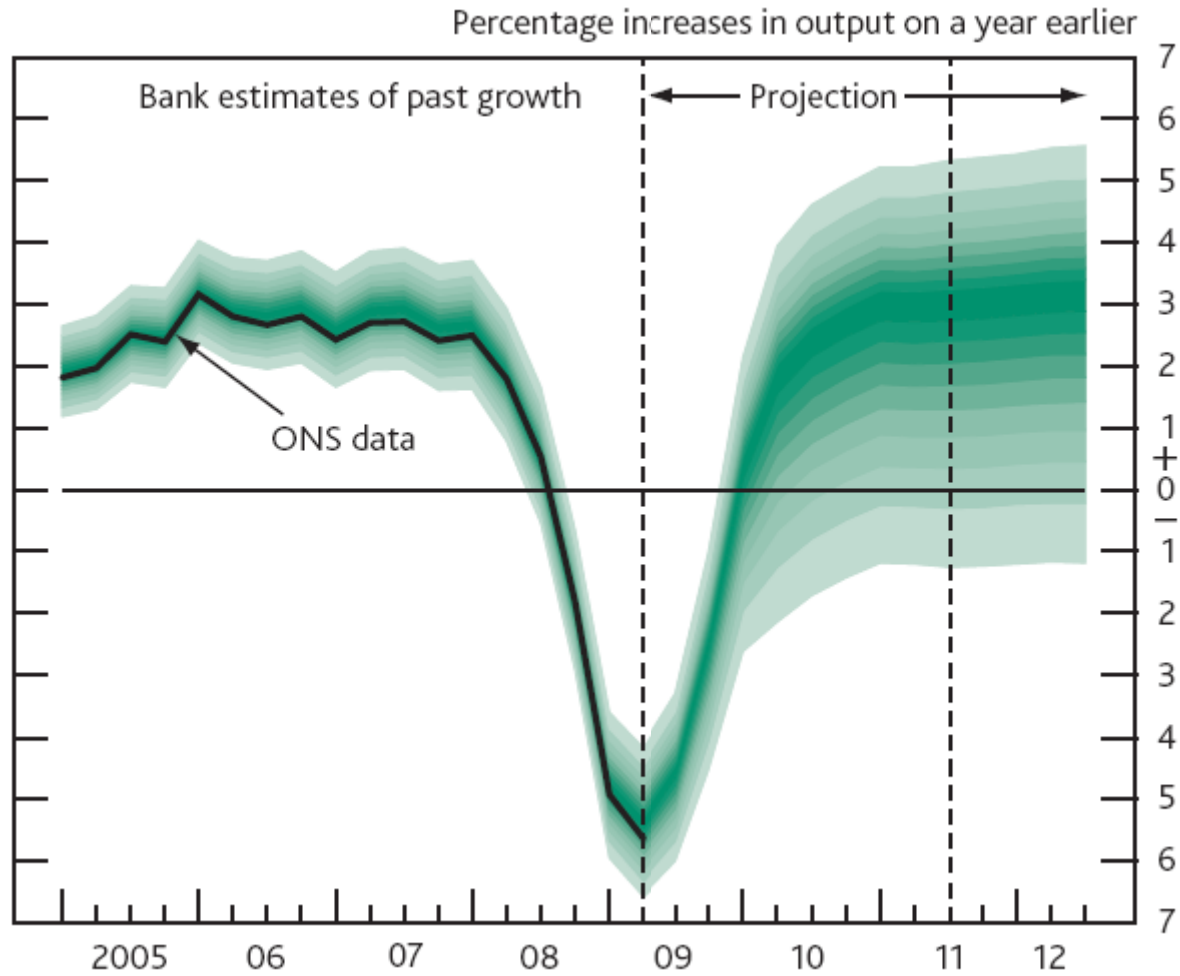
---

## Then.....

- From 1997 to 2007 public spending increased by 42% in real terms
- Local Government saw a 39% real increase in Government grants from 1997 to 2007

# Now.....

## Bank of England GDP projections



# Three waves of impact

---

**Impact on local economy: 2008-9**

**Impact on public services: 2009-11**

**Impact on public revenues: 2011-19**

---

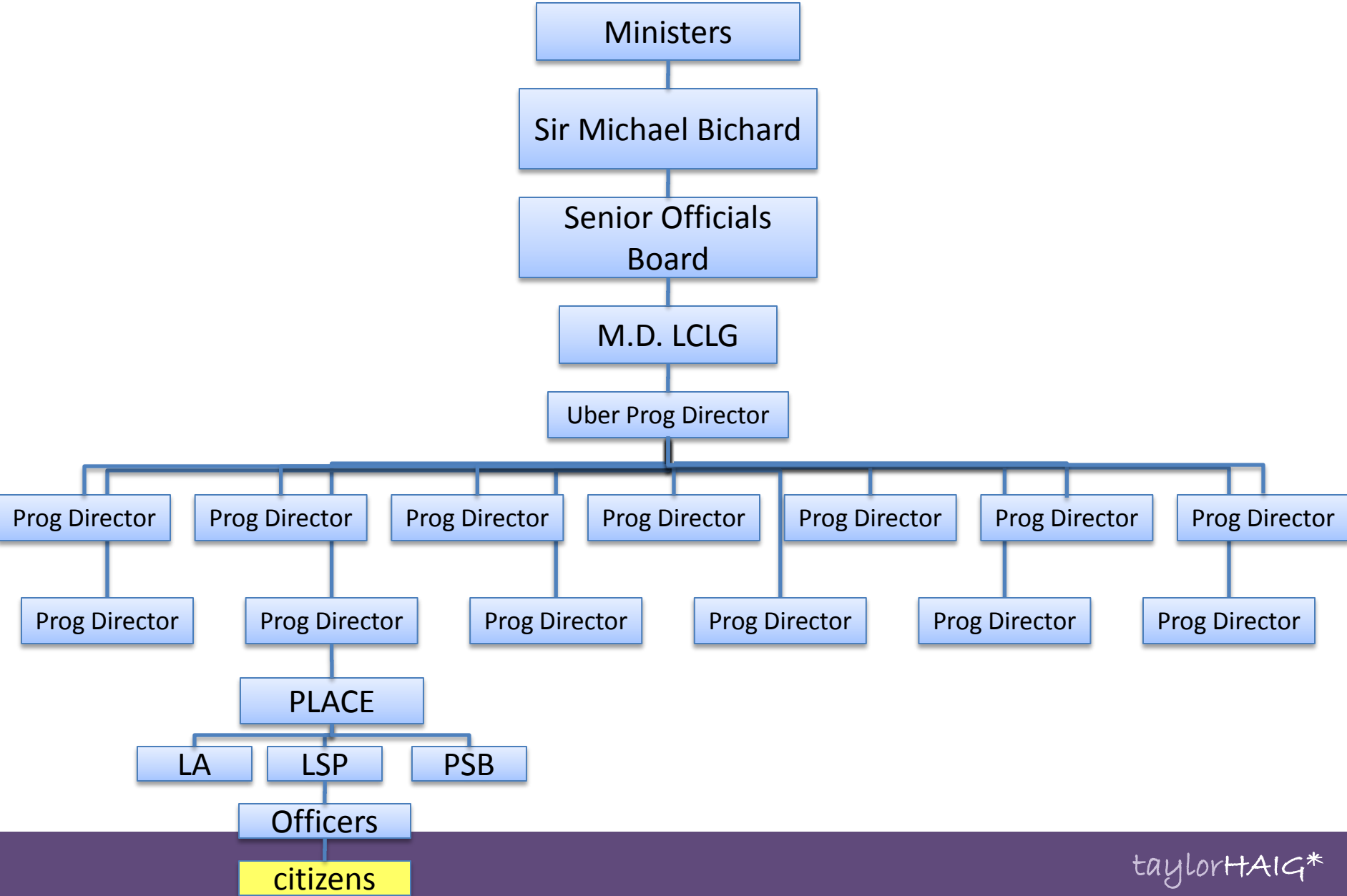
Sir Michael Bichard recommended the roll out of ***Total Place:***

- to map ***total public spending*** in a local area
- identify ***efficiencies*** through local public sector ***collaboration***
- identify opportunities to ***redesign services*** around user wants and needs

---

So what is Total Place?

# A fractal of the problem?.....



Or.....

---

A once in a generation opportunity to  
transform the whole system public service  
system



---

So, Total Place or Total .....something else?

---

13 Pilot 'places' – over 25 'themes'

Over 70 'non-pilot' TP programmes

2 RIEPs taking a regional lead

Strong 'Brand'

- 
- Lack of consensus on what Total Place actually *is*
  - High degree of ‘Total Place Vanity’
  - Focus on early intervention – but where will the money come from?
  - Who is addressing the ‘big’ questions – performance management, political leadership, power shift etc?
  - Tory Place?

# Total Place challenges how, and how much, resource is allocated....

## Total Place resource mapping reveals the total public expenditure across a local area

Detailed analysis of expenditure

Recreation, culture and religion

### Areas where income directed - UNCOFOG classifications

	Actual use
Recreational and sporting services	£1,460
Cultural services	£22,063
Broadcasting and publishing services	£0
Religious and other community services	£0
R&D Recreation, culture and religion	£0
Recreation, culture and religion other	£21,043
Select	£0
Select	£0
Select	£0
	<u>£44,566</u>

### Recreation, culture and religion

Who spends it

Name of organisation	Amount
Allerdale DC	£4,165
Barrow-in-Furness BC	£770
Carlisle CC	£10,038
Copeland DC	£4,400
Cumbria County Council	£16,388
Eden DC	£2,500
South Lakeland DC	£5,227
Parish Councils	£1,078
	<u>£44,566</u>

### Barrow-on-Furness BC

Income sources  
Organisation type

Amount  
(£'000)

Public sector spending bodies - Other UK	£19,028
RSG	£1,420
Public (Cumbria) - taxation	£24,108
Business - non taxation	£2,341
Department for Work and Pensions	£21,333
Department for Communities and Local Government	£2,554
Interest/Capital/Trading	£10,827
Department for Environment, Food & Rural Affairs	£1
Department of Health	£7
Other English bodies	£13
NDRR	£7,074
Select	£0
Select	£0
Select	£0
Select	£0
Select	£0
Select	£0
Select	£0
Select	£0
Select	£0

### Expenditure

Transfers to other organisations

Amount  
(£'000)

Public sector spending bodies - Other	£19,315	
English		
Public sector spending bodies - Cumbria	Cumbria County Council	£21,623
Other English bodies		£1,542
Public sector spending bodies - Cumbria	Parish Councils	£72
Public sector spending bodies - Cumbria	Cumbria Police Authority	£3,459
Select		£0
Select		£0
Select		£0
Select		£0
Select		£0
Select		£0
Select		£0
Select		£0
Select		£0
Select		£0
Select		£0
Select		£0

### Direct service expenditure

Amount  
(£'000)

General public services	Executive and legislative organs, financial and fiscal affairs, external affairs	£9,385
Environmental protection	Environmental protection other	£606
Economic affairs	Transport	£1,514
Housing and community amenities	Housing and community amenities other	£22,511
Recreation, culture and religion	Recreation, culture and religion other	£770
Economic affairs	General economic, commercial and labour affairs	£138

# Lack of resource is not the issue.....

---

- The direct cost of alcohol related diseases is over £2.7bn per year
- Drink related deaths have increased by over 100% since 1990
- Smoking is estimated to cost NHS £5bn a year
- Illegal drug use is estimated to cost £110 billion over the last decade.
- School exclusions are estimated to cost £300,000 per child.
- The average lifetime cost of NEET is £97,000

# Meet the Johnsons



- No male member of the family has worked for three generations
- mum, a smoker, is diabetic and suffers from depression
- petty crime and social disorder
- domestic violence (mainly drink related)
- children missing school. Some trouble with police.



**This family has had 370 face to face visits from public agencies in 18 months.**

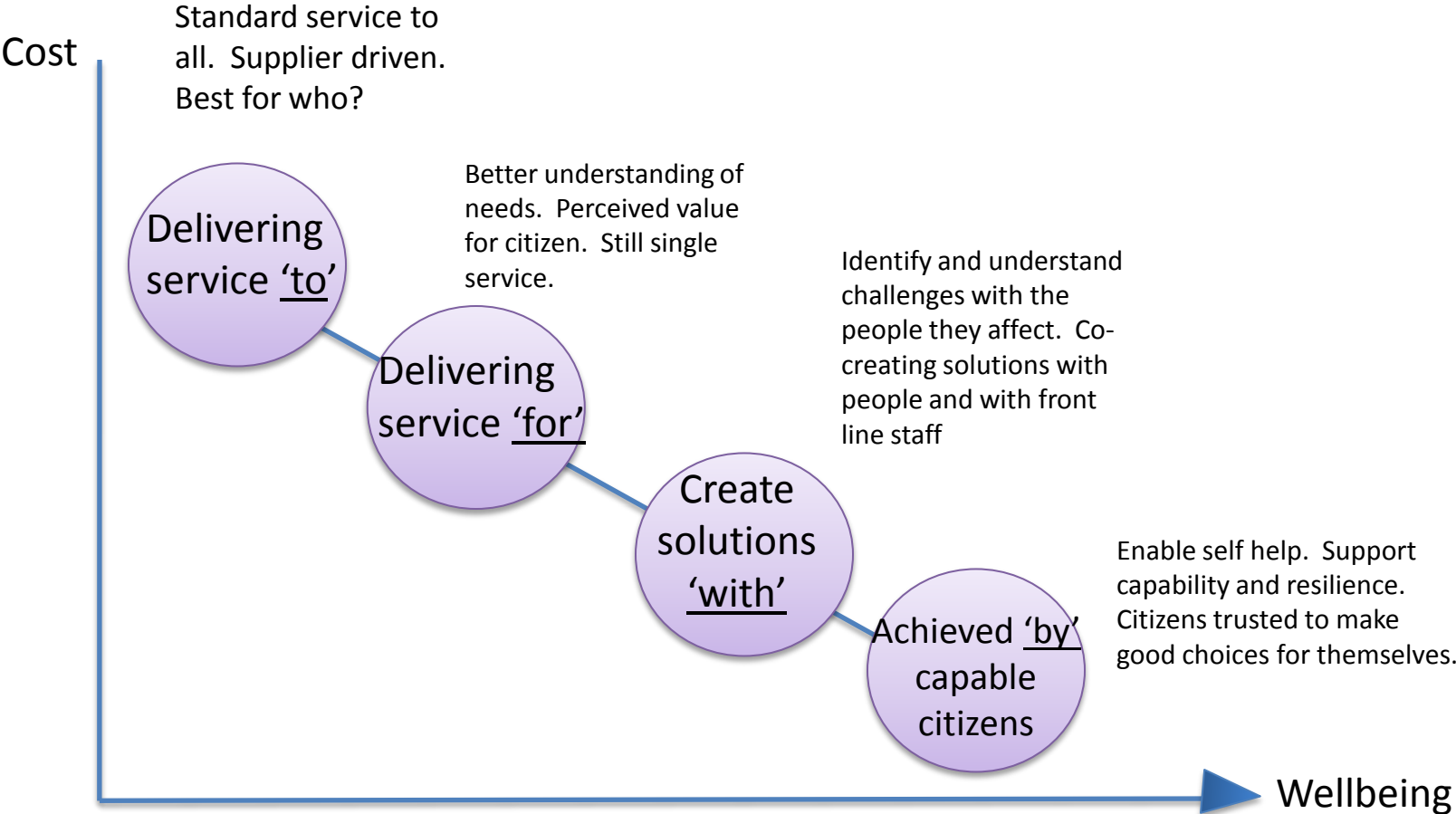
---

“80% of our expenditure was on the staff costs of the beauracracy, filling in forms, assessments and meeting with each other.

Only 20% of staff time was spent actually working with the families.”

Director of children’s services

# Putting individuals and their relationships at the heart of service design....



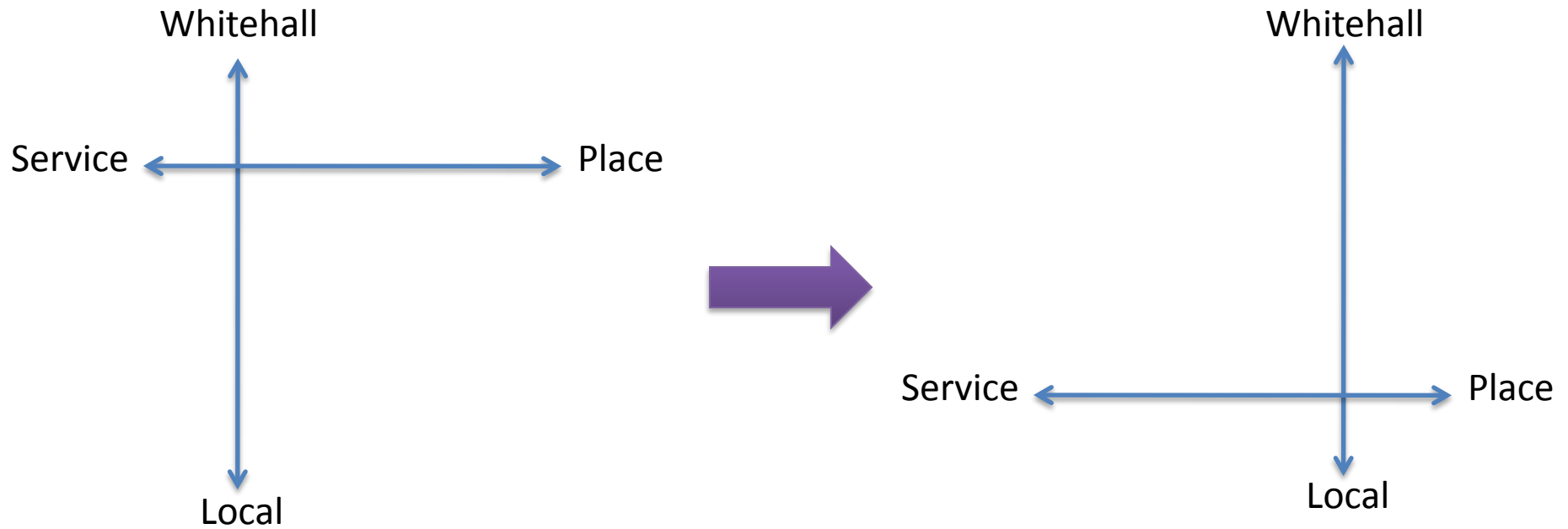


***total place*** is about innovation. It's about creating 'better for less'.....



- 
- Current models of service provision are not good enough
  - Salami slicing will not deliver the efficiencies or improvements needed
  - We need innovation – to re-imagine public service

It's about challenging the relationships of power, knowledge and resources.....



---

Better Places requires a whole systems approach;  
based on place;  
built on trust.

---

Some lessons from forerunners of Total Place .....

Calling Cumbria was about engaging with people....



# ...and building trust and collaboration



# Suffolk – The Lives we Lead, the Leaders we Need





Insights came from spending time with people.....



# Opportunities....

---

- Collaboration – better and more
- An integrated response to real needs
- Strategic commissioning in the truest sense

# Threats....

---

- Failure to grasp...take the intellectually easy path
- Total Place becomes just another government programme
- Failure to invest in long-term well-being
- Services that improve quality of life seen as 'peripheral'
- A joined-up policy on sustainability?

---

# Thank you for listening

[richard.hewitt@taylorhaig.co.uk](mailto:richard.hewitt@taylorhaig.co.uk)