

department for

education and skills

creating opportunity, releasing potential, achieving excellence

WHAT HELPS TO SUPPORT CHANGE? LESSONS FROM THE LOOKED AFTER CHILDREN TASKFORCE

DOUG LAWSON

*Senior Manager (Family & Youth) Cheshire County Council
previously seconded to LAC Taskforce*

LOOKED AFTER CHILDREN TASKFORCE
working with councils to meet the placement needs of children

LOOKED AFTER CHILDREN TASKFORCE

working with councils to meet the placement needs of children

- Fostering workshops with over 60 councils
- Nine regional commissioning workshops
- National reference group with independent fostering providers
- Support to DfES Choice Protects policy team
- Support to dissemination of research

department for

education and skills

creating opportunity, releasing potential, achieving excellence

ACHIEVING PLACEMENT CHOICE AND STABILITY

“We expect local authorities to focus in particular on creating greater placement stability by ensuring: a greater range of placement options for looked after children and young people; fewer out of authority placements; and more personalised support and better access to activities and opportunities.”

DfES statement on commissioning placements and services, April 2005

BARRIERS TO MAKING POSITIVE CHANGE

issues identified by councils

Need more of...

Resources

Staff

Understanding

Will to change

Need less of...

Bureaucracy

Competing demands

Negative culture

Competition between
organisations

We saw that.....

Although good practice is already widely known, and supported by research, people still struggle to find the will and the resources to implement it.

***SO WHAT HELPS TO SUPPORT
CHANGE?***

A POSITIVE CULTURE

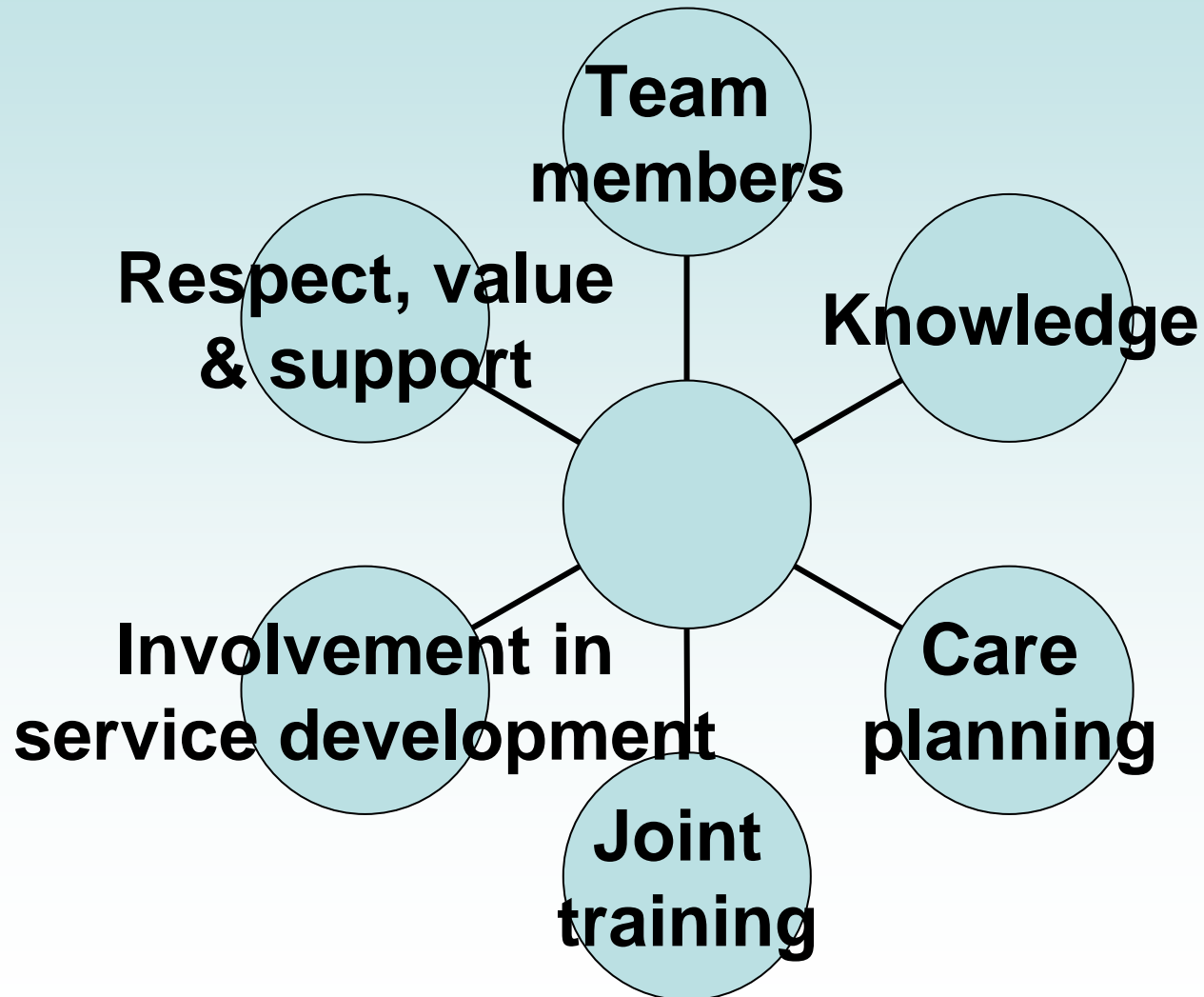
QUESTIONS TO ASK:

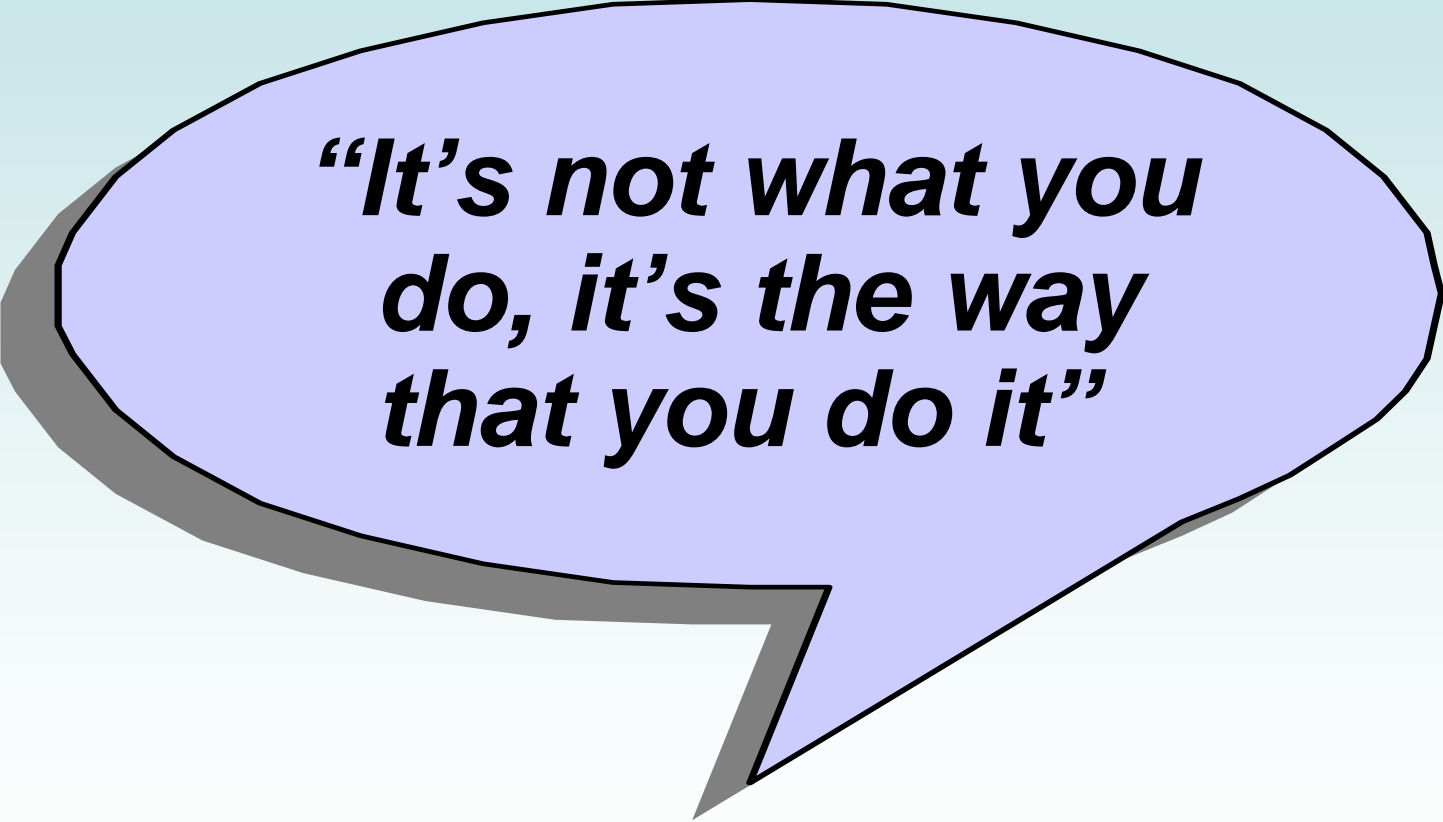
- *Could you or I be a foster carer?*
- *Who champions foster care in our agencies?*
- *Do we value the central contribution of foster carers and their families – and how do we demonstrate this in our behaviour and agency practice?*

GOOD CORPORATE PARENTING



PARTNERSHIP WITH FOSTER CARERS





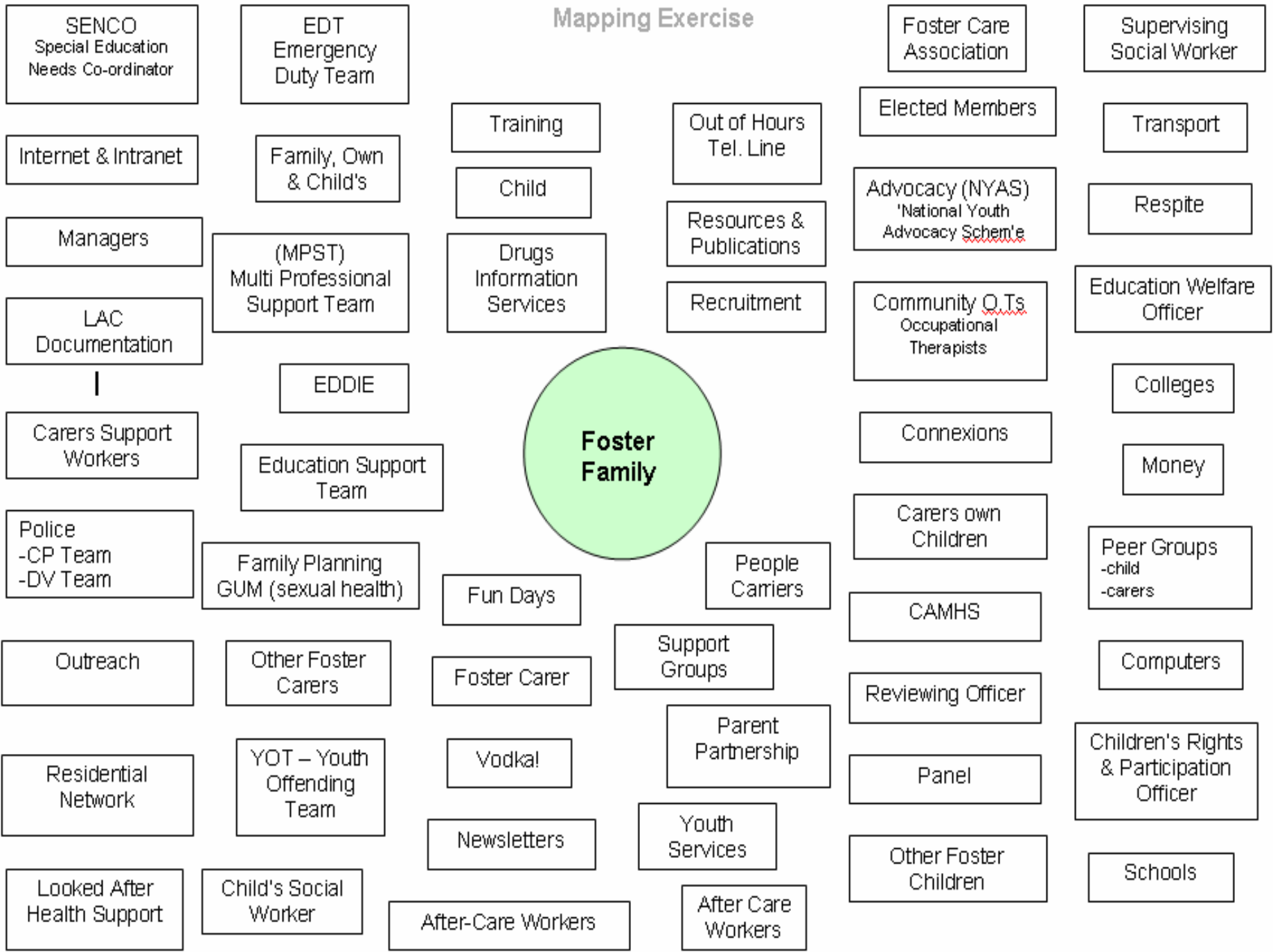
***“It’s not what you
do, it’s the way
that you do it”***

SUPPORTING FOSTER CARERS

What is available to support foster families and children and young people in placement?

Taskforce mapping exercise:

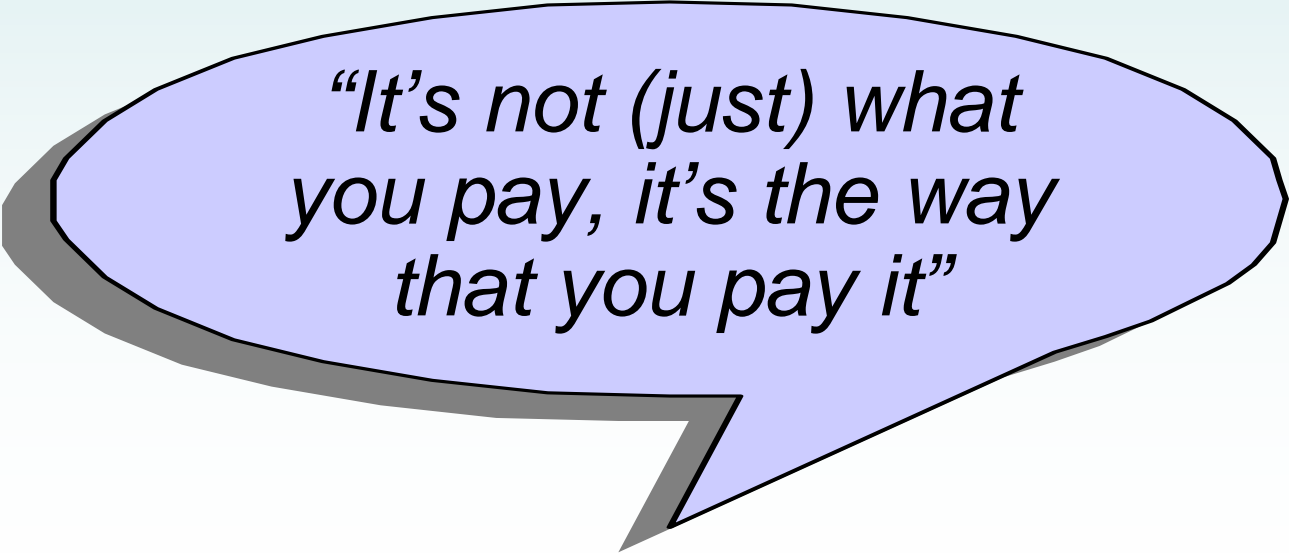
Mapping Exercise





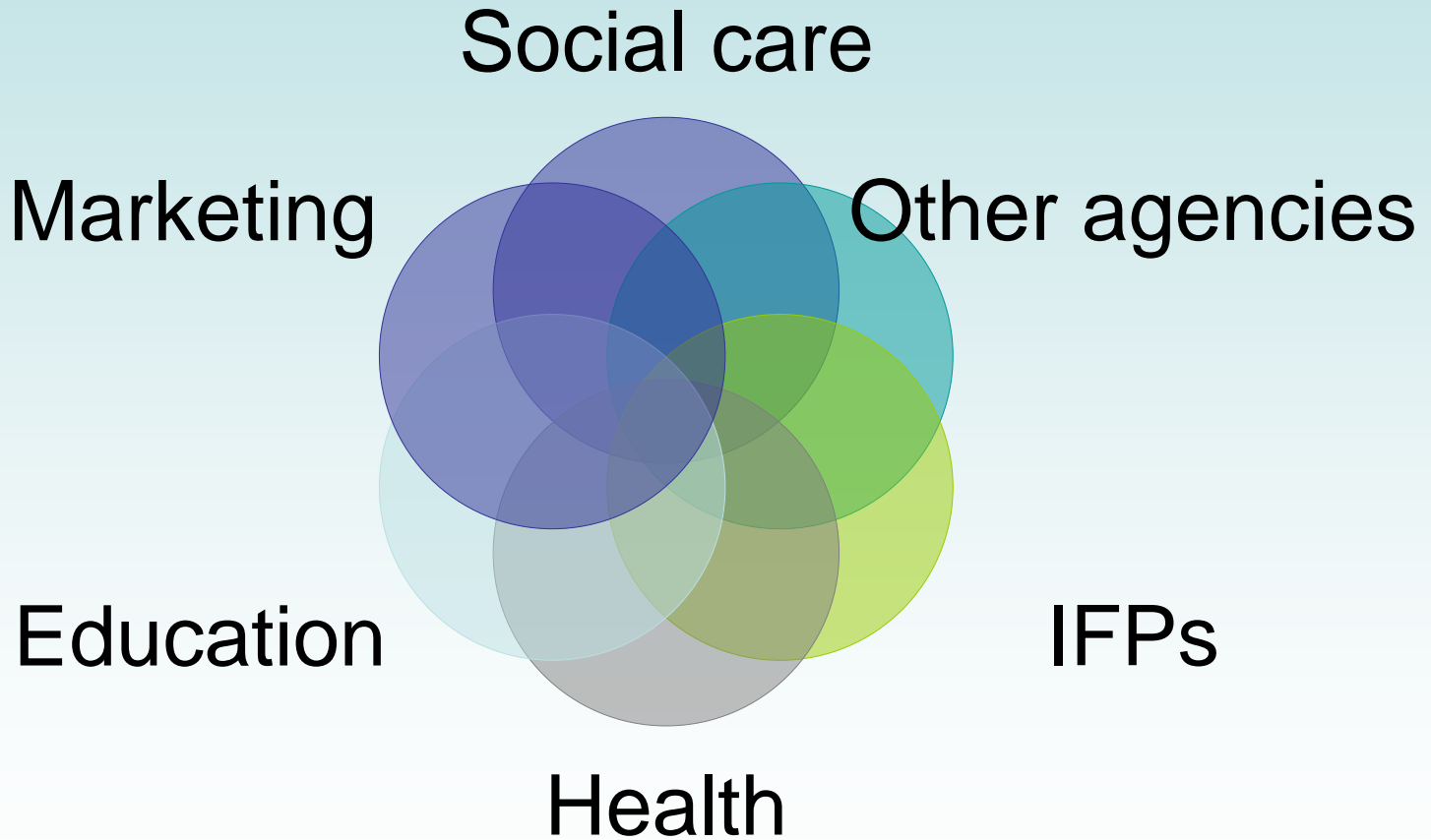
REWARDING FOSTER CARERS

- Allowances – covering the full costs
- Fees – for time, energy and skills
- Discounts and leisure schemes
- Awards and celebrations

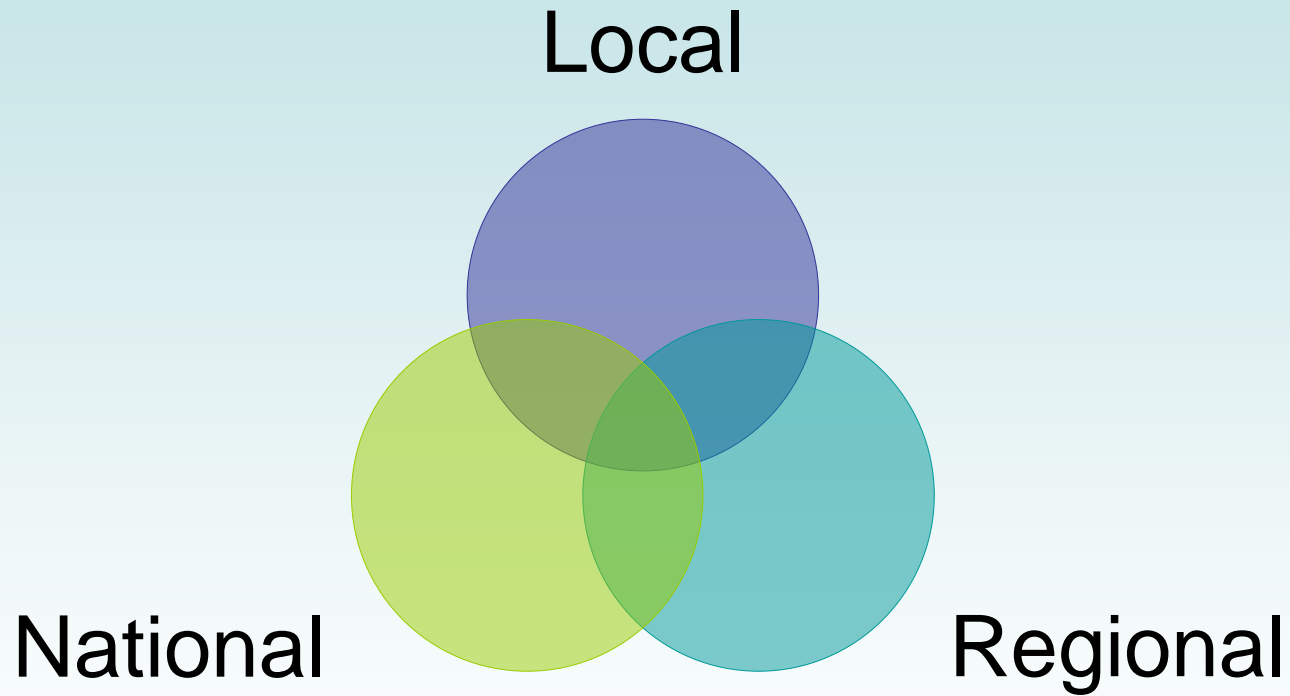


*“It’s not (just) what
you pay, it’s the way
that you pay it”*

COLLABORATION



COLLABORATION



CLEAR INFORMATION AND COMMUNICATION

“It’s not what you say, it’s the way that you say it...”



OPEN MINDS

- Seek service feedback
- Listen to children, families, foster carers
- Share ideas and experiences
- Ask “why don’t we do that?”



