

Knowledge at your finger tips

# **Social Care Online**

social care  
institute for excellence

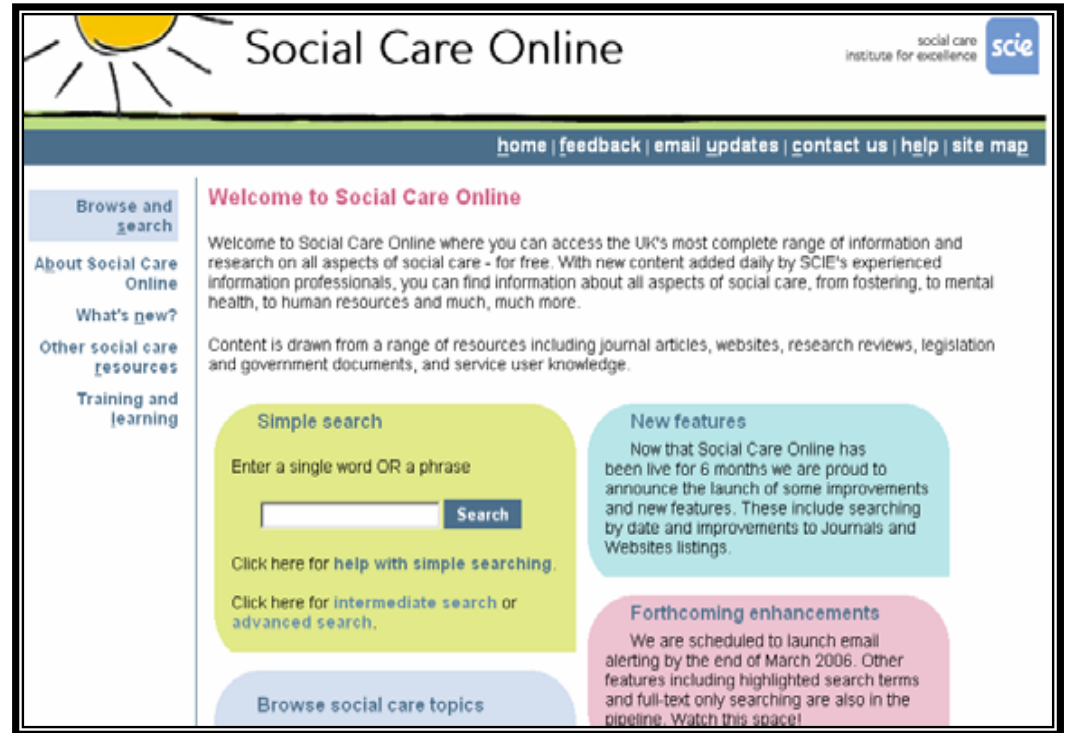


# Social Care Care Online

- Overview
- Content
- Resource Types
- Search Options
- Questions

# Overview

- A free web based resource
- 80,000+ book & article references
- 1000+ social care websites
- Updated daily
- Easy to use



# Social Care Online Content

- Core subjects
- Mostly UK material
- Full text
- Commissioned content
- Links to other social care resources

## What topic areas are covered in Social Care Online?

- Benefits and personal finance
- Criminal justice, law and rights
- Education, training and employment
- Government and social policy
- Health and health care
- Housing and environment
- Living and life events
- Management and organisational development
- Mental health and mental health care
- People, groups and communities
- Physical and learning disabilities
- Research and evaluation
- Social care services
- Social work and social workers

# Social Care Online Resources

- Biographies and autobiographies
- Current awareness
- Guidance and standards
- Legislation
- Practice
- Research briefings
- Teaching and training materials
- Website links

# Other Social Care Resources

[Browse and search](#)

[About Social Care Online](#)

[What's new?](#)

[Other social care resources](#)

[Training and learning](#)

## Other social care resources

On this page you will find links to other types of social care resources including websites, databases and libraries. The resources listed on this page are separate from Social Care Online, so any searches you may have conducted will not have drawn results from these resources, although some of the records within databases may also be contained in Social Care Online.

- [Databases](#)
- [Journals](#)
- [Libraries](#)
- [News](#)
- [Websites](#)

If you are responsible for a resource that you think should be included on Social Care Online please contact us: [socialcareonline@scie.org.uk](mailto:socialcareonline@scie.org.uk).

---

[top of page](#)

[terms and conditions](#) | [accessibility information](#) | [access key enabled](#)

Produced and maintained by the [Social Care Institute for Excellence](#).

social care  
institute for excellence



# Training and Learning

Browse and  
search

About Social Care  
Online

What's new?

Other social care  
resources

Training and  
learning

## Training and learning

On this page you will find links to a number of online 'teach yourself' tutorials which you can use to help improve your research, human resources and internet skills.

You can also use these tutorials as part of your post-registration training and learning as required of registered social workers.

What is post-registration training and learning? For an explanation from the social care council for your country, visit:

- [General Social Care Council \(England\)](#)
- [Scottish Social Services Council](#)
- [Care Council for Wales](#)
- [Northern Ireland Social Care Council](#).

## Improve your internet skills

**Internet tutorial for social workers.** Launched in July 2000 this 'teach yourself' tutorial is aimed at students, lecturers and researchers and shows what the Internet can offer social workers. The tutorial was developed by the [Social Care Institute for Excellence](#) and is one of a series of tutorials developed by the [Virtual Training Suite](#) of the Resource Discovery Network

**Internet for health and social care tutorial.** If you are studying or working in health or social care, this tutorial directs you to relevant internet-based resources. This tutorial was developed by the [Virtual Training Suite](#) of the Resource Discovery Network.

social care  
institute for excellence



# What's New

Browse and  
search

About Social Care  
Online

What's new?

Other social care  
resources

Training and  
learning

## What's new?

### Latest additions

In this section you can find out what has been added recently to Social Care Online.

To view latest additions by topic, click on your topic from within the **Topic tree** - the most recently added items appear first.

Additions made in the last 7 days are listed below (159 records). Click on a title to view the full record.

Sort by:

Display/export:

social care  
institute for excellence





# Social Care Online Search Results

**Author:** CROSSLEY Nick;

**Title:** Contesting psychiatry: social movements in mental health

**Publication Date:** 2006

**Format:** book;

**Topics:** mental health services; psychiatry; social policy; sociology; research; United Kingdom;

**Select:**

**Author:** CROSSLEY Nick;

**Title:** Contesting psychiatry: social movements in mental health

**Publisher:** Abingdon: Routledge, 2006. 229p.

**Abstract:** Resistance and social movements in mental health have been important in shaping current practice in both mental health and psychiatry. "Contesting Psychiatry", focusing largely on the UK, examines the history of resistance to psychiatry between 1950 and 2000. Building on the author's research the book provides an empirical account and exploration of the key features including: an account of the key social movements and organisations who have contested psychiatry over the last fifty years; the theorisation of resistance to psychiatry which might apply to other national contexts and to social movement formation and protest in other medical arenas; and the exploration of theories of power in psychiatry. Innovative and insightful, this text addresses changes in health and medicine, providing a new sociological perspective on psychiatry.

**Format:** book;

**Topics:** mental health services; psychiatry; social policy; sociology;

**Content Type:** research;

social care  
institute for excellence



# Social Care Online Search Results

**Author:** MILLER Keith A.; et al;

**Title:** Trouble on the journey home: reunification failures in foster care.

**Reference:** Children and Youth Services Review, 26(3), March 2006, pp.260-274.

**Format:** article;

**Topics:** birth parents; children; family reunification; foster care; research; United States;

Select:

**Author:** MILLER Keith A.; et al;

**Title:** Trouble on the journey home: reunification failures in foster care.

**Reference:** Children and Youth Services Review, 26(3), March 2006, pp.260-274.

**Abstract:** The authors examined postreunification variables regarding parent characteristics, child characteristics, parent service utilization, child service utilization, family environment, and neighborhood environment as they relate to reunification failure. The sample for the study included foster children who, at reunification with their birth parents, ranged in age from 4–7 years. All participants were reunified with at least one parent. Among the variables found to significantly differentiate between failed and successful reunifications were parental utilization of substance abuse treatment, child utilization of special educational services, child utilization of individual, family, or group therapy, overall parenting skill level, appropriate use of discipline, and quality of neighborhood. The authors discuss the implications of these results for policies aimed at increasing the success rate of reunifications following foster care.

**Journal home:** <http://www.elsevier.com/inca/publications/store/5/5/6/>

**Format:** article;

**Topics:** birth parents; children; family reunification; foster care;

**Content Type:** research;

**Country/Region:** United States;

**Record ID:** [www.scie-socialcareonline.org.uk/DisplayDocuments.asp?sesid=7372d70b-29e5-4fac-b9b3-06199aae063d](http://www.scie-socialcareonline.org.uk/DisplayDocuments.asp?sesid=7372d70b-29e5-4fac-b9b3-06199aae063d)



# Social Care Online Search Options

1. Browse social care topics
2. Simple
3. Intermediate
4. Advanced

The screenshot shows the 'Social Care Online' website in a Microsoft Internet Explorer browser window. The address bar shows 'http://www.khsasptest.org.uk/search.asp'. The page title is 'Social Care Online - home - Microsoft Internet Explorer'. The main heading is 'Browse/Search Social Care Online'. Below this, there is a paragraph: 'Social Care Online offers you a number of different ways to search, depending on what sort of results you want to get and your research expertise. Search results are drawn from a wide range of different resources.'

On the left side, there is a navigation menu with the following items: 'Browse and search', 'About Social Care Online', 'What's new?', 'Other social care resources', and 'Training and learning'. A green arrow labeled '1' points to the 'Browse and search' link.

The main content area is divided into four sections, each with a green arrow pointing to it:

- Browse social care topics**: A list of topics including 'benefits and personal finance', 'criminal justice, law and rights', 'education, training and employment', 'families, children and young people', 'government and social policy', 'health and health care', 'housing and environment', 'living and life events', 'management and organisational development', 'mental health and mental health care', 'people, groups and communities', 'physical and learning disabilities', 'research and evaluation', 'social care services', and 'social work and social workers'. A green arrow labeled '1' points to this section.
- Simple search**: A search box with a 'Search' button. A green arrow labeled '2' points to the search box.
- Intermediate search**: A search interface with three search boxes, each with an 'Author' dropdown menu and an 'And' dropdown menu. A green arrow labeled '3' points to the first search box.
- Advanced search**: A section for advanced search. A green arrow labeled '4' points to this section.

At the bottom of the page, there is a 'Find topic' section with a search box and a 'Search' button. A green arrow labeled '1' points to this section.

# 1. Browse social care topics

## Browse social care topics

benefits and personal finance  
criminal justice, law and rights  
education, training and employment  
families, children and young people  
government and social policy  
health and health care  
housing and environment  
living and life events  
management and organisational  
development  
mental health and mental health care  
people, groups and communities  
physical and learning disabilities  
research and evaluation  
**social care services**  
social work and social workers

Find topic

Click here for [help](#) with browsing topics.

## Browse topics

Back

- social care services (1)
  - adoption(1714)
  - adult protection(94)
  - after care(988)
  - child protection services(3290)
  - community care(5757)
  - counselling(2141)
  - day care(944)
  - family support(392)
  - foster care(1584)
    - foster carers(585)
    - kinship care(133)
    - private foster care(87)
    - transracial foster care(43)

## Combine topics

## Related Topics

To view related terms tick a topic and select the 'RT' link that appears. Any related topics will appear here.

social care  
institute for excellence



# 1.1 Browse social care topics

## Browse social care topics

benefits and personal finance  
criminal justice, law and rights  
education, training and employment  
families, children and young people  
government and social policy  
health and health care  
housing and environment  
living and life events  
management and organisational development  
mental health and mental health care  
people, groups and communities  
physical and learning disabilities  
research and evaluation  
social care services  
social work and social workers

### Find topic

Click here for [help with browsing topics](#).

Back

- Subjects (0)
  - management and organisational development(0)
    - financing(2820)
    - information and communications technology(1820)
      - information services(1490)
      - insurance(115)
      - management(3610)
        - change management(949)
        - collaboration(3940)
        - conflict management(99)
        - financial management(1967)
        - information management(819)
        - leadership(393)
        - management operations(5353)
        - managers(646)
        - staff management(970)
          - job satisfaction(138)
          - staff appraisal(40)
          - staff development(922)
          - staff induction(28)
          - staff recruitment(747) ←

## Combine topics

### Related Topics

To view related terms tick a topic and select the 'RT' link that appears. Any related topics will appear here.

social care  
institute for excellence



## 1.2 Search results

**Author:** SAINSBURY Mary;

**Title:** Practice guide to fostering

**Full Text:** [Click here for the full text](#)[Click here for the full text](#)

**Publication Date:** 2004

**Format:** online resource;

**Topics:** access to children; black and minority ethnic people; evaluation; foster care; foster carers; foster children; job satisfaction; placement; siblings; staff recruitment; training; user views; practice;

**Select:**

**Author:** SAINSBURY Mary;

**Title:** Practice guide to fostering

**Abstract:** This online guide is designed for foster care practitioners and anyone with an interest in good practice in fostering and offers quick and easy access to knowledge about foster care practice. It is designed to enable practitioners, carers, teams and services to think creatively about their work to benefit foster children and young people. The guide includes case studies, good practice tips, key research findings; examples from practice; details of relevant legislation, guidance and standards in England.

**Series:** (SCIE Practice Guide)

**Full text:** [Click here for the full text](#)  
[Click here for the full text](#)

**Format:** online resource;

**Topics:** access to children; black and minority ethnic people; evaluation; foster care; foster carers; foster children; job satisfaction; placement; siblings; staff recruitment; training; user views;

**Content Type:** practice;

**Record ID:** www.scie-socialcareonline.org.uk/DisplayDocuments.asp?sesid=05452f7f-5561-4bff-bc5a-f6bcd8f3e740



# 1.3 Practice guide

[email update](#) | [contact us](#) | [links](#) | [site map](#) | [site help](#) | [SCIE home](#) |

[search](#)

[go >](#)

## Practice guide index

[Home](#)  
[About this guide](#)  
[Children's views](#)  
[Children's needs](#)  
[Children's health](#)  
[Education](#)  
[Contact](#)  
[Temporary foster  
care](#)  
[Placement](#)  
[Foster carers](#)  
[User evaluation](#)  
[References](#)

[Feedback](#)  
[Email updates](#)

You are in: [SCIE website](#) > [Resources and publications](#) > [Practice guide 3](#) > Guide home page

## Practice guide 3: Fostering

### Introduction

SCIE Practice guide 3: Fostering (October 2004) is designed for foster care practitioners and anyone with an interest in good practice in fostering. The easy-to-use guide is packed with case studies, good practice tips and research summaries and designed to answer any questions foster carers may have on fostering, as well as provide food for thought.

The guide is based on evidence from a number of reports including [SCIE Knowledge Review 4: Innovative, Tried and Tested – A Review of Good Practice in Fostering](#), [SCIE Knowledge Review 5: Fostering Success – An Exploration of the Research Literature in Foster Care \(1\)](#), [\(2\)](#) and two other recent studies [\(3\)](#). It shows how this evidence can be used in every day practice.

See also:

- [About this guide](#)
- [SCIE Knowledge Review 4: Innovative, Tried and Tested](#)
- [SCIE Knowledge Review 5: Fostering Success](#)



### Download

Click here to download a PDF version of [Practice guide 3: Fostering \(505kb PDF file\)](#).

For information on downloading documents visit our [help page](#).

social care  
institute for excellence



# 1.4 Practice guide - Foster carers

You are in: [SCIE website](#) > [Resources and publications](#) > [Practice guide 3](#) > [Foster carers](#) > [index](#)

Pr

You are in: [SCIE website](#) > [Resources and publications](#) > [Practice guide 3](#) > [Foster carers](#) > [recruiting](#)

## Practice guide 3: Fostering

### Recruiting foster carers

[Key findings](#)  
[Practice points](#)  
[Research](#)

#### Key findings

Recruiting and retaining foster carers is key to delivering an effective fostering service. Although there is a shortage of foster carers, there is a great deal of information from research about effective recruitment and many fostering agencies are using this knowledge in their practice.

Local schemes, especially word of mouth and articles in the local press are most successful, and a consistently high local profile is required in order to recruit more foster carers. One-off, unsystematic campaigns are less effective and ongoing publicity achieves more, for example: about the need for foster carers and the benefits of the task.

Recruitment campaigns should use young people who are, or who have been fostered, and they should also use foster carers and their networks to attract potential recruits.

Campaigns should focus on the professionalism of the task; the opportunities for training and qualifications, the opportunities to diversify into other child care work, and the financial rewards. Successful campaigns are likely to have the following features:

#### Resources

[Legislation](#)  
[Ideas from practice](#)  
[Search Social Care Online](#)

#### Download

[Click here to download a PDF version of Practice guide 3: Fostering \(505kb PDF file\).](#)  
For information on downloading documents visit our [help page](#).

[Profile of foster carers](#)  
[Recruiting foster carers](#)  
[Training foster carers](#)  
[Retaining foster carers](#)  
[Creating job satisfaction](#)

[Previous page](#)



## 2. Simple search

### Simple search

Enter a single word OR a phrase

user participation

Click here for [help with](#)

### Search results

3417 records found - click on a title to view the full record

**Refine search results:**  
[Show all options](#) - [Hide options](#)

[help](#)

Full text records only [Go](#)

Sort by:  [Go](#)

Display/export:  [Go](#)

[Select All](#)

Page 1 of 171

[1-20](#)

[21-40](#)

[41-60](#)

[61-80](#)

[81-100](#)

[101-120](#)

[121-140](#)

[next >](#)

1 of 3417

**Author:** HEFFERMAN Kristin;

**Title:** Social work, new public management and the language of 'service user'.

**Reference:** British Journal of Social Work, 36(1), January 2006, pp.139-147.

**Format:** article;

**Topics:** health care; patients; policy formulation; service users; social care provision; user participation; research; United Kingdom;

Select:

social care  
institute for excellence



## 2. 1 Refine search results

### Search results

87 records found - click on a title to view the full record

**Refine search results:** [help](#)

[Show all options](#) - [Hide options](#)

<b>Content type</b>	<b>Format</b>	<b>Treatment*</b>	<b>Audience*</b>
<input type="checkbox"/> Government publication	<input type="checkbox"/> Good practice	Theoretical	Care professionals
<input type="checkbox"/> Consultation document	<input type="checkbox"/> Guidance	Practical	Researchers
<input type="checkbox"/> Policy document	<input type="checkbox"/> Statistics	Overview	Users and carers
<input type="checkbox"/> Legislation	<input type="checkbox"/> Standards	*Under development	*Under development
<input type="checkbox"/> Directories	<input type="checkbox"/> Research reviews		
<input type="checkbox"/> Inspection report	<input type="checkbox"/> Research		
<input type="checkbox"/> Practice	<input type="checkbox"/> Training material		

Full text records only [Go](#)

## 2. 2 Government publications

**Author:** GREAT BRITAIN. Department of Health;

**Title:** Reward and recognition: the principles and practice of service user payment and reimbursement in health and social care: a guide for service providers, service users and carers

**Full Text:** [Click here for the full text](#)

**Publication Date:** 2006

**Format:** book;

**Topics:** benefits; carers; health care; patients; personal finance; service users; social care provision; user participation; government publication; United Kingdom;

**Select:**

**Author:** COMMISSION FOR SOCIAL CARE INSPECTION;

**Title:** The state of social care in England 2004-05: a summary

**Full Text:** [Click here for the full text](#)

**Publication Date:** 2005

**Format:** book;

**Topics:** decision making; inspection; policy; public sector; social care provision; user participation; voluntary sector; government publication; England;

**Select:**

social care  
institute for excellence



### 3. Intermediate search

Intermediate search

	<input type="text" value="older people"/>	Author
And	<input type="text" value="dementia"/>	Author
And	<input type="text"/>	Topic
	Date range: <input type="text"/>	Free text
		Title

Click here for [help with intermediate searching](#).

Intermediate search

	<input type="text" value="older people"/>	Topic
And	<input type="text" value="dementia"/>	Topic
And	<input type="text"/>	Author
	Date range: <input type="text"/>	

Click here for [help with intermediate searching](#).

# 3.1 Search results

## Search results

42 records found - click on a title to view the full record

**Refine search results:** [help](#)  
[Show all options](#) - [Hide options](#)  
 Full text records only [Go](#)

Sort by:  [Go](#)    Display/export:  [Go](#)    [Select All](#)

Page 1 of 3    [1-20](#) | [21-40](#) | [41-42](#)    [next >](#)

## Refine search results by: Research reviews

**Author:** MARKS David F.; SYKES Catherine M.;  
**Title:** Dealing with dementia: recent European research  
**Publication Date:** 2000  
**Format:** book;

## 3.2 Full record and extended abstract

# Social Care Online

Marks, David F. and Sykes, Catherine M.  
**Dealing With Dementia: Recent European Research**  
2000  
Middlesex University Press

### Summary

This book is a synthesis of recent European research on dementia care. It is directed towards informal carers, health professionals, journalists and policy makers. The book has three objectives: to discuss in the plainest possible language one of the most significant social questions of the contemporary world - how we are going to deal with the increase in incidence of dementia; to bring together in one place the information, conclusions and recommendations from thirty-four Alzheimer's Disease projects supported by the European Commission; and to help raise public awareness about facts concerning dementia, especially the fact that dementia is the end product of disease, not an inevitable feature of ageing, and that the problem is increasing dramatically.

### Context

CONTEXT This book states that in the years to come the health care systems in Europe will be put under increasing pressure and that cries for reforms in social and health care will become louder. The main reasons

Summary  
Context  
Method  
Contents  
Conclusion  
References

social care  
institute for excellence



## 3.3 Systematic review

**Author:** [SAMPSON E L;](#)  
**Title:** A systematic review of the scientific evidence for the efficacy of a palliative care approach in advanced dementia.  
**Reference:** International Psychogeriatrics, 17(1), March 2005, pp.31-40.  
**Abstract:**

**Extended abstract:**  
**Journal home:**  
**Format:**  
**Topics:**  
**Content Type:**  
**Record ID:**

### Summary

### Context

### Methods

*What sources were used?*

*What search terms/strategies were used?*

*What criteria were used to decide on which studies to include?*

*Who decided on their relevance and quality?*

*How many studies were included and where were they from?*

*How were the study findings combined?*

### Findings of the review

### Author's conclusions

### Implications for policy or practice

### References

# Example of a journal article

## Full record

**Author:** TARRY Natalie;

**Title:** It's not rocket science.

**Reference:** Community Care, 4.08.05, pp.32-33.

**Abstract:** This article looks at the public service modernisation agenda on social care services, including the new localism, more user choice, the increased use of partnership and greater involvement of the voluntary and community sector. It concludes that recent and proposed changes in social care, such as individualised budgets and the extension of the direct payments scheme, are exciting and transformational.

**Full text:** <http://www.communitycare.co.uk/articles/article.asp?liarticleid=50428>

**Journal home:** <http://www.communitycare.co.uk/Home/default.asp>

**Format:** article;

**Topics:** adults; direct payments; government policy; social care provision; voluntary sector;

**Country/Region:**United Kingdom;

**Record ID:** <http://www.khsasptest.org.uk/DisplayDocuments.asp?sesid=59d99cc6-68a2-4988-95d5-934eb4ce2ae7>



# Example of a research briefing

## Full record

- Author:** UNIVERSITY OF SHEFFIELD. SCHOOL OF HEALTH AND RELATED RESEARCH (SCHARR);
- Title:** SCIE research briefing 11: the health and well-being of young carers
- Abstract:** This web-based briefing summarises the existing research findings relating to the prevalence of children and young people as carers in the UK and provides an over view of the key characteristics of young carers. It outlines and provides links to relevant government documents that describe the standards that govern the conduct of statutory services, organisations and individuals in relation to young carers. The briefing also contains a section summarising the issues raised by service users and carers, both as described by the literature and as defined through local consultation. The briefing was commissioned by the Social Care Institute for Excellence (SCIE).
- Series:** (SCIE Research Briefing; no. 11)
- Full text:** [Click here for the full text](#)
- Format:** online resource;
- Topics:** education; health; literature reviews; mental health; social care provision; user views; young carers;
- Content Type:** research; research review;
- Record ID:** [www.scie-socialcareonline.org.uk/DisplayDocuments.asp?sesid=949b308b-8c86-4fb3-8080-fbc775ef0656](http://www.scie-socialcareonline.org.uk/DisplayDocuments.asp?sesid=949b308b-8c86-4fb3-8080-fbc775ef0656)

# Research briefing – full text

These briefings are only available as online resources

Topics cover issues at the interface of health and social care

List of briefings

CONTENTS

Key messages

What is the issue?

Why is it important?

What does the research show?

Organisational knowledge

Policy community knowledge

Practitioner knowledge

Research knowledge

User and carer knowledge

Useful links

Acknowledgements

References

## SCIE Research Briefing 11: The Health and Well-being of Young Carers

### Key Messages

- Young carers do not form an homogenous group with clearly defined or uniform responsibilities. The amount and type of care they provide can vary greatly, and does not predict how far the health or well-being of each young carer may be affected.
- Several pieces of legislation and guidance formally recognise young carers and define service provision and the responsibility of agencies with reference to this group.
- Only small numbers of young carers are currently being identified or assessed for support. The reasons for this include blurred boundaries of responsibility between adults and children's services; a lack of awareness among many professional groups of young carers' needs and concerns; and young carers' own lack of awareness of their entitlements, and their reluctance to seek formal help.
- The research has found that young carers can experience substantial physical, emotional or social problems, and encounter difficulties in school and elsewhere.
- Many of the studies examine the experiences of young carers who are in touch with Young Carer Projects; they do not report the views of "hard to reach" young carers who are not in touch with either services or projects, or perhaps do not see themselves as young carers at all. The research therefore principally offers general findings on the experiences of young carers who see themselves as such, and who seek help and support.
- Social workers and teachers have been recognised as the people potentially most capable of identifying and supporting young carers, but young carers' report that they consider themselves to be stigmatised by teachers and their peers, and feel that little support is forthcoming from schools.
- The research consistently reports positive feedback from young carers about Young Carers Projects. In this setting many young carers consider their problems and experiences to be valued, understood and recognised. They prefer support that is non-intrusive and provided by individuals and organisations other than statutory services.

# Example of a website record

## Full record only

- Title:** Shaping our Lives
- Abstract:** Shaping Our Lives began as a research and development project, but has now been established as an independent organisation run by service users. Shaping our Lives are funded by the Joseph Rowntree Foundation and the Department of Health and play a key role in facilitating user involvement around social care issues. They work with a range of service users including: disabled people, older people, people with learning difficulties, users and survivors of mental health services and are working to make links with other service users including young people in care and users of family services. Their projects include developing a national network of user organisations, outcome development project, and a project working to gather service users' views on the future development of social policy. Their site is currently under construction.
- Website Link:** <http://www.shapingourlives.org.uk>
- Format:** website;
- Topics:** learning disabilities; mental health; Non Commercial Organisations: General; older people; organisations; physical disabilities; user views;
- Country/Region:** United Kingdom;
- Record ID:** <http://www.khasptest.org.uk/DisplayDocuments.asp?sesid=bd0d385f-71ec-4239-a9d6-a6d2540aaef7>

# Example of a journal title

## Full record

**Journal title:** Journal of Evidence-Based Social Work

**ISSN:** 1543-3714

**Abstract:** This journal examines the fast-growing use of evidence-based practice in everyday care, identifying and evaluating cutting-edge theory, techniques, and strategies. The journal presents literature from practitioners, researchers, and academics that collates and analyses research findings relative to practice issues and intervention approaches over a given period of time.

**Journal home:** <http://www.haworthpressinc.com/web/JEBSW/>

**Format:** journal;

**Topics:** [evidence-based practice](#);

**Record ID:** <http://www.scie-socialcareonline.org.uk/DisplayDocuments.asp?sesid=ab477d2f-40e9-47a2-9f72-07e7a3cf5104>

social care  
institute for excellence



# Further Information and Support

[home](#) | [feedback](#) | [email updates](#) | [contact us](#) | [help](#) | [site map](#)

1. [About](#)

2. [Site map](#)

3. [help](#)

4. [contact us](#)

5. [email updates](#)

6. [feedback](#)

1

Browse and  
[search](#)

[About Social Care  
Online](#)

[What's new?](#)

[Other social care  
resources](#)

[Training and  
learning](#)

## Contact us

### General enquiries

Social Care Online Team  
Social Care Institute for Excellence  
Goldings House  
2 Hay's Lane  
London SE1 2HB  
Email: [socialcareonline@scie.org.uk](mailto:socialcareonline@scie.org.uk)  
T: 020 7089 6840  
Textphone: 020 7089 6893  
Fax: 020 7089 6841

social care  
institute for excellence

