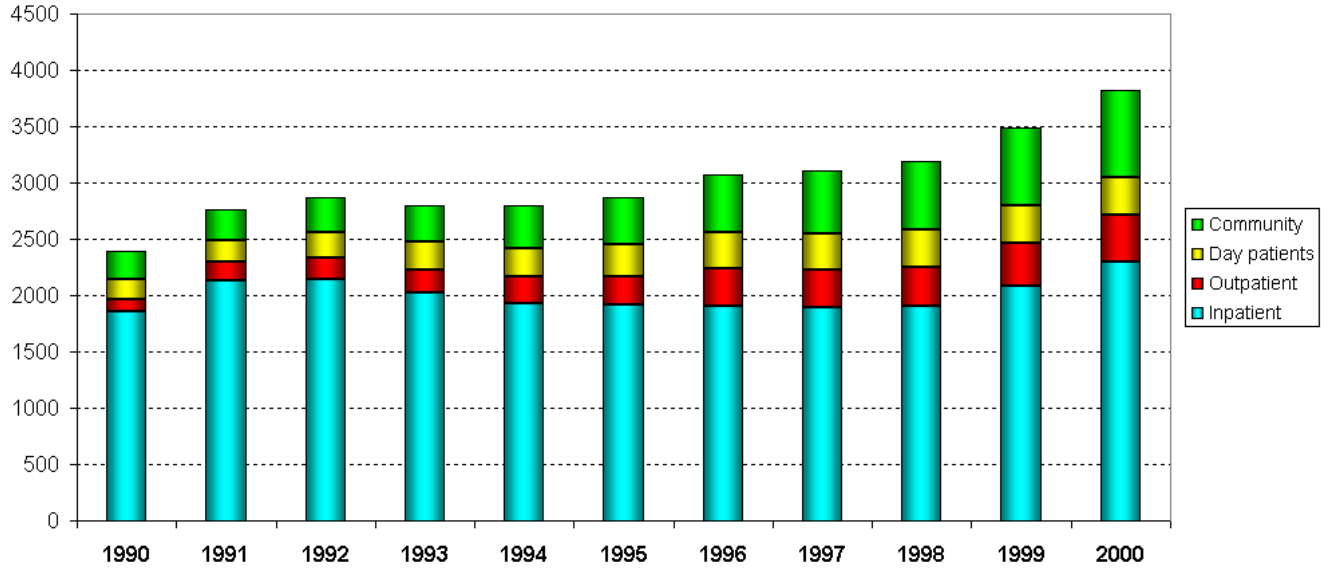


## FIGURES FOR CHAPTER 5

**Figure 5.1 England: NHS mental health expenditure, 1990-2000  
(£m adjusted)**



**Figure 5.2 England - Expenditure in social services on mental health  
1994-95 to 2002-03**

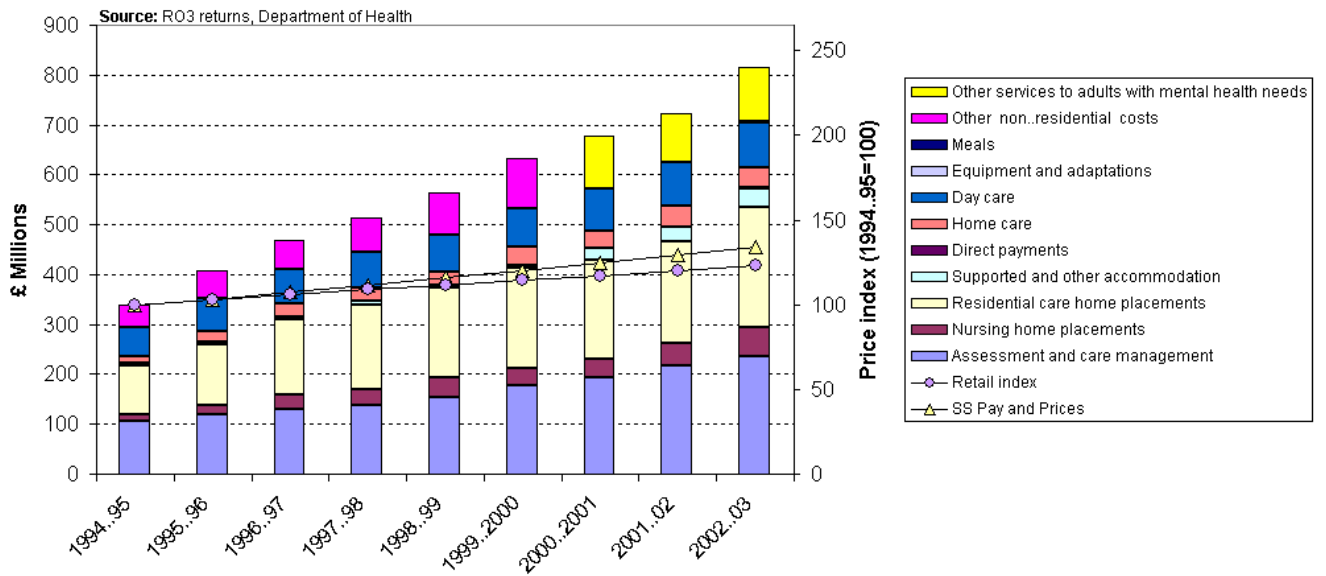
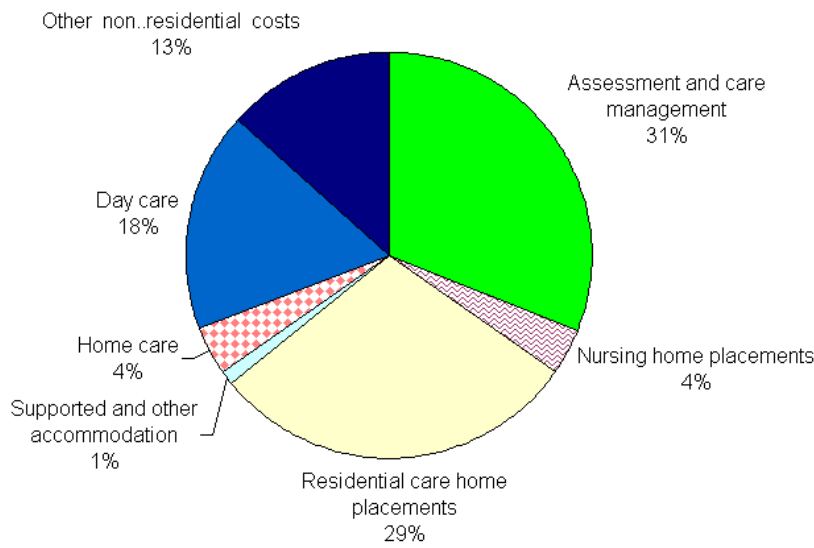


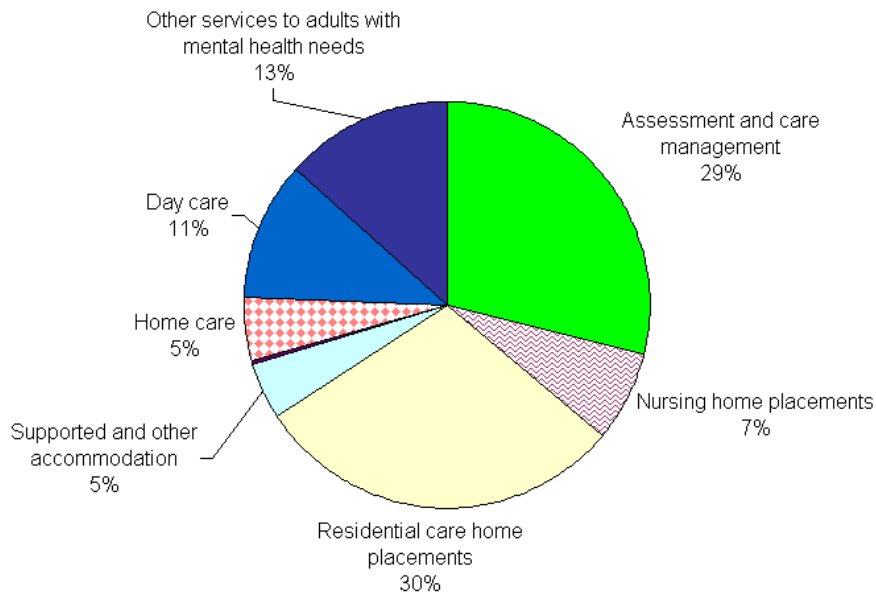
Figure 5.3 England: Proportional social services expenditure on mental health 1994-1995

Source: R03 returns, Department of Health

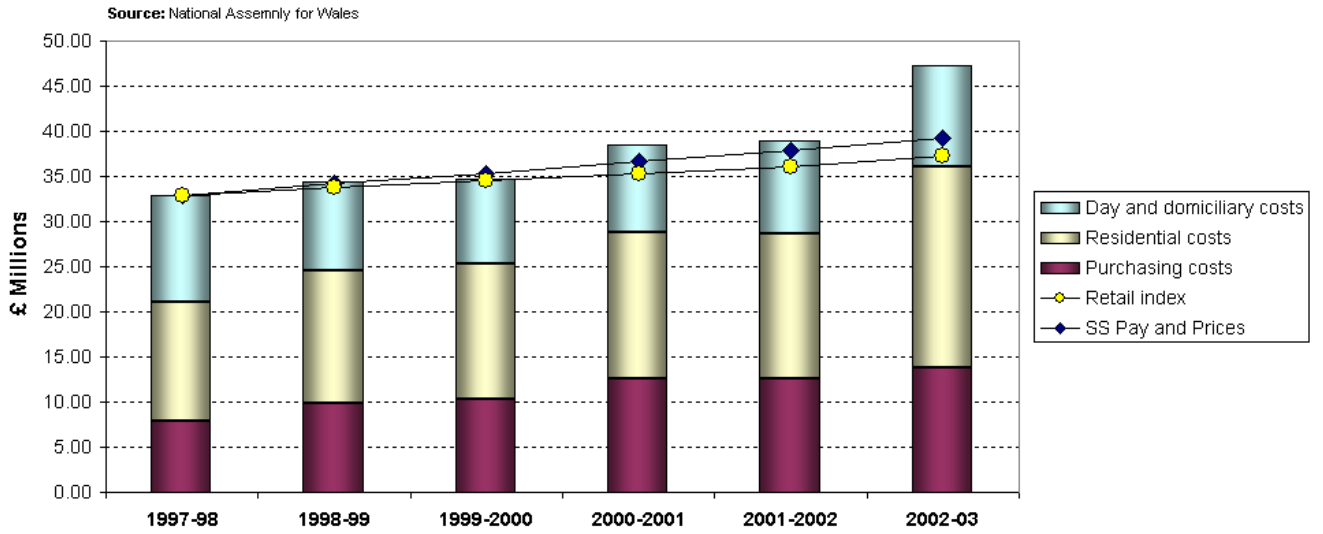


Source: R03 returns, Department of Health

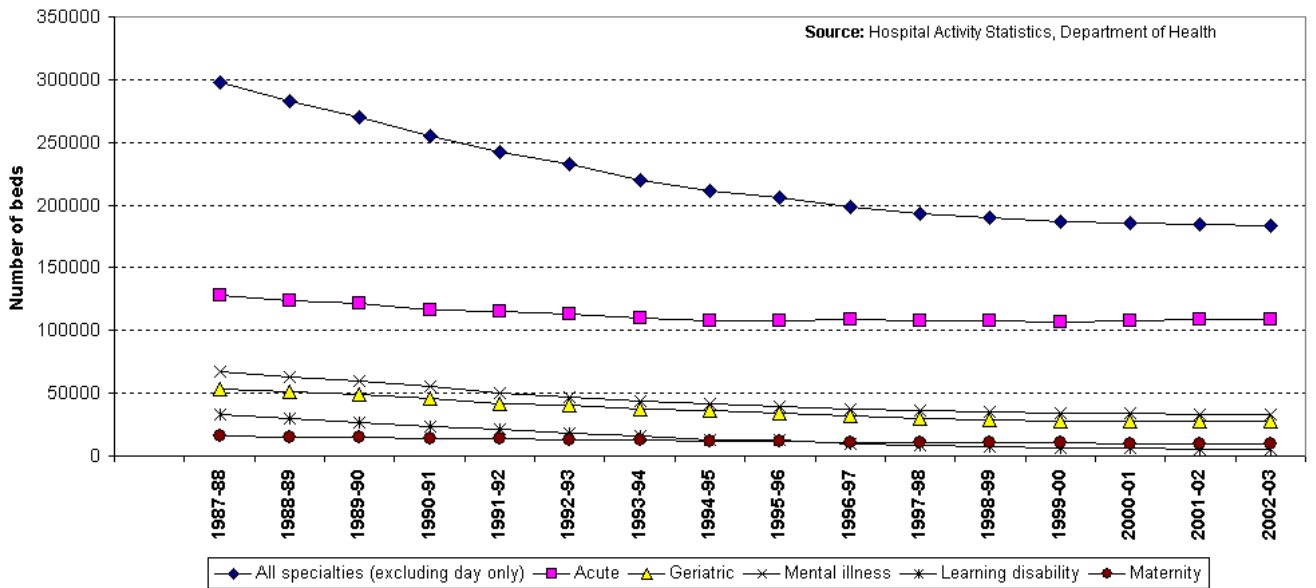
Figure 5.4 England: Proportional social services expenditure on mental health 2002-2003



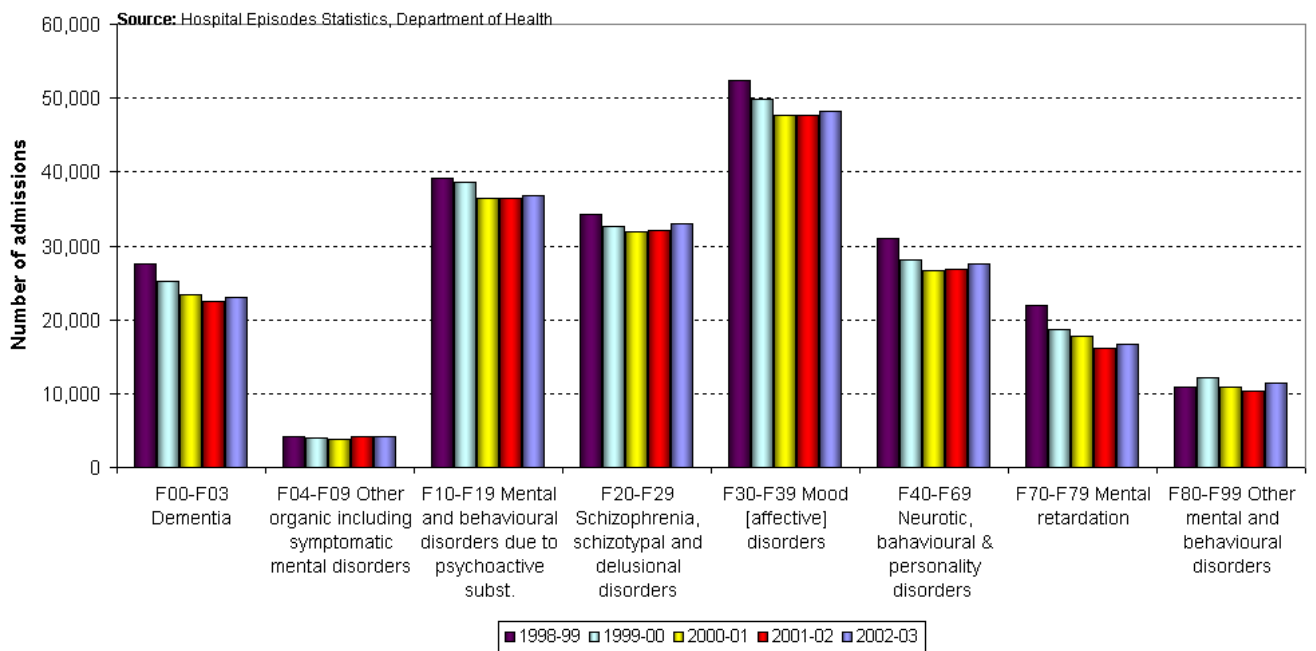
**Figure 5.5 Social services expenditure on mental health in Wales  
1994-95 to 2002-03**



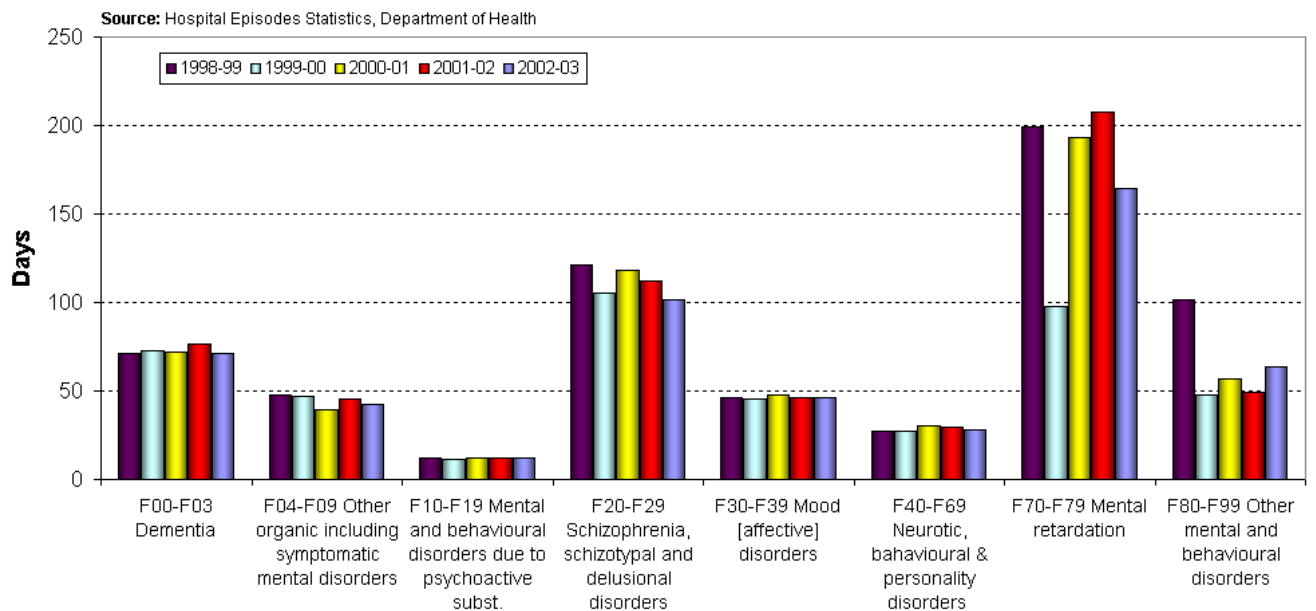
**Figure 5.6 England: Average daily number of available hospital beds, by sector, 1987-88 to 2002-03**



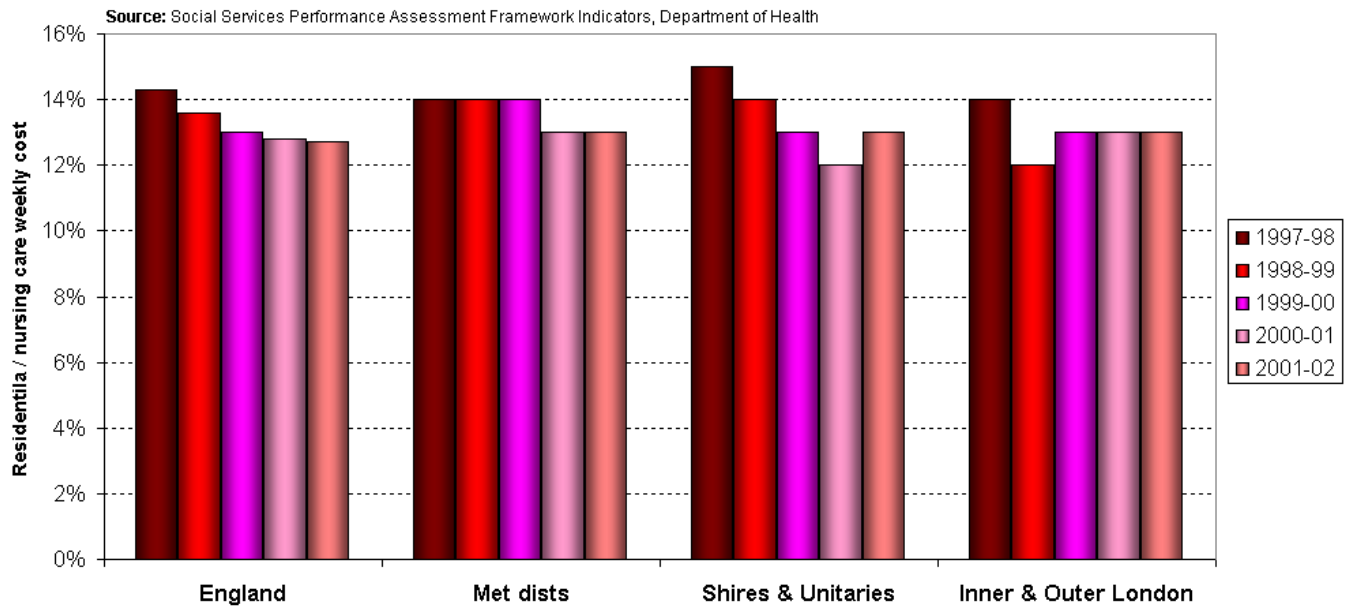
**Figure 5.7 England: Mental health related hospital admissions by primary diagnosis type**



**Figure 5.8 England: Mental health related hospital episodes mean length of stay by primary diagnosis type**



**Figure 5.9 England: Emergency psychiatric re-admissions within 90 days of hospital discharge as a percentage of people aged 16-64 discharged from the care of a psychiatric specialist**



**Figure 5.10 - England: Council-supported residents with mental health problems at 31 March by type of accommodation, 1999 to 2003**

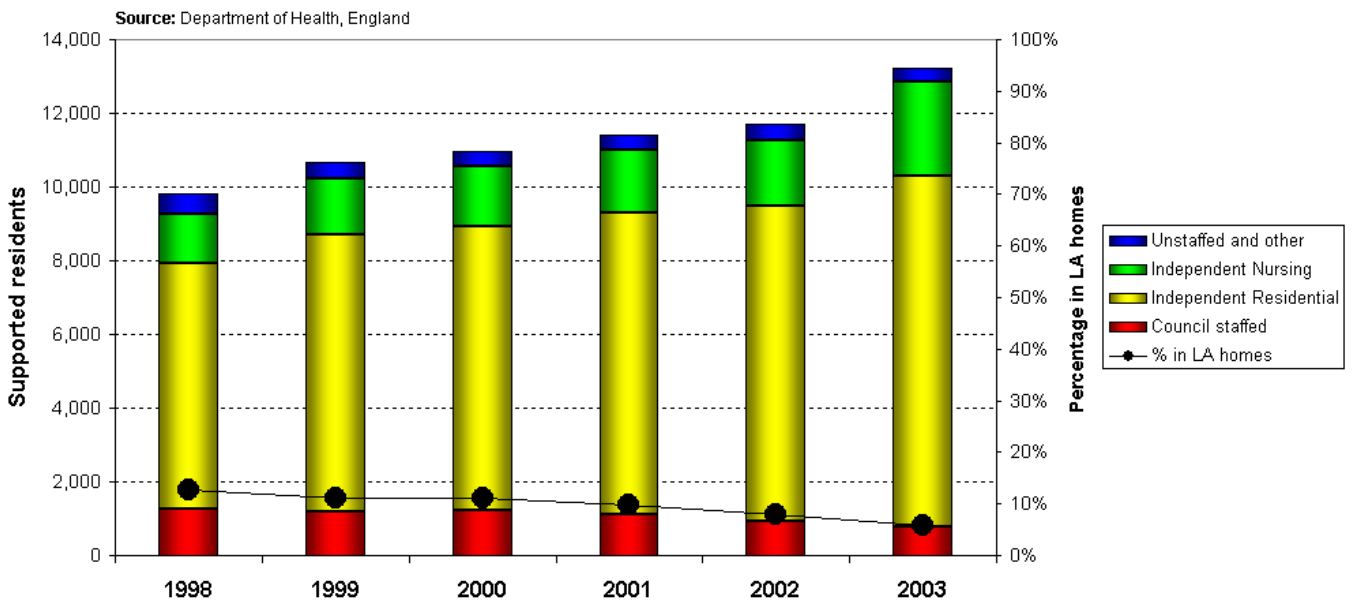


Figure 5.11 - England: Council-supported residents (with mental health problems) permanent and temporary admissions by type of accommodation, 2002 - 2003

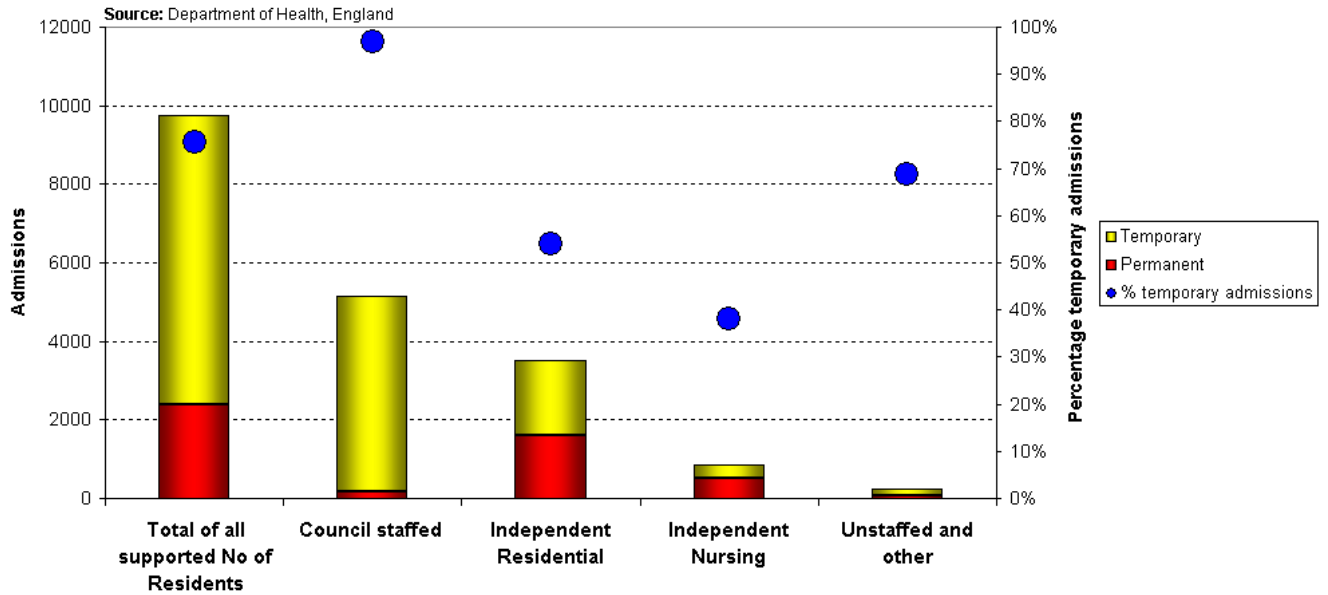


Figure 5.12 England: Average gross weekly expenditure per person on supporting adults with mental illness in residential and nursing care

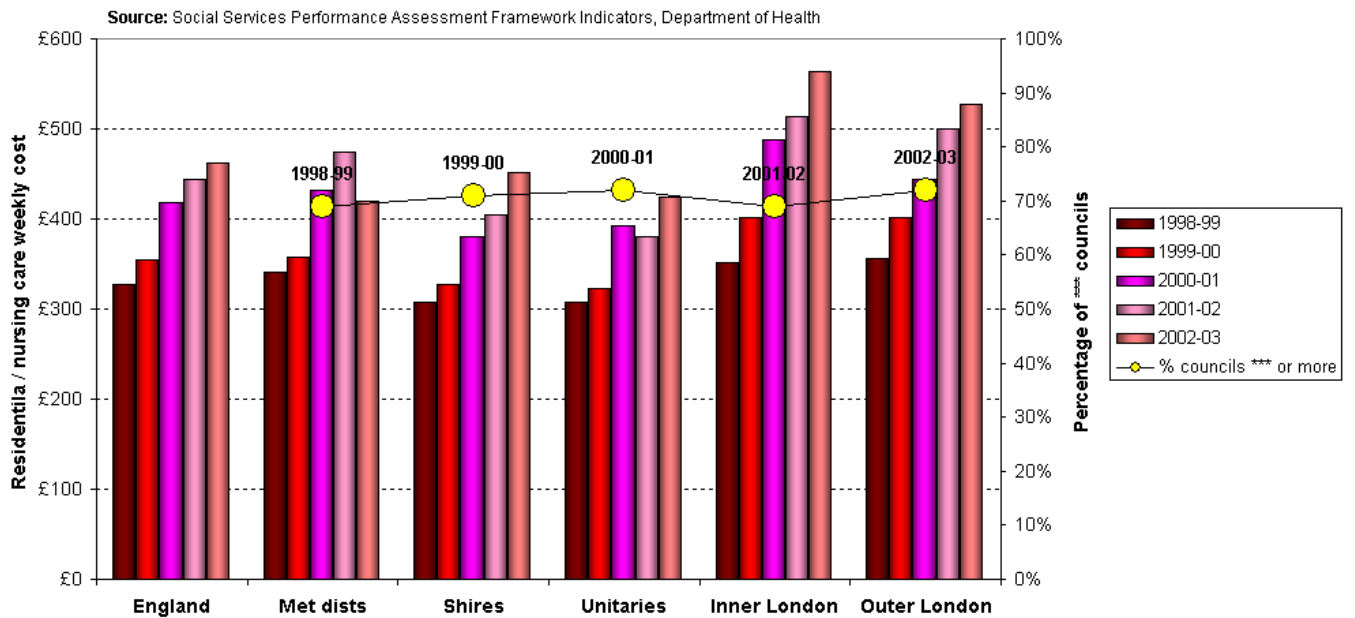


Figure 5.13 - Wales: number of mental health residents in residential homes by sector of provision

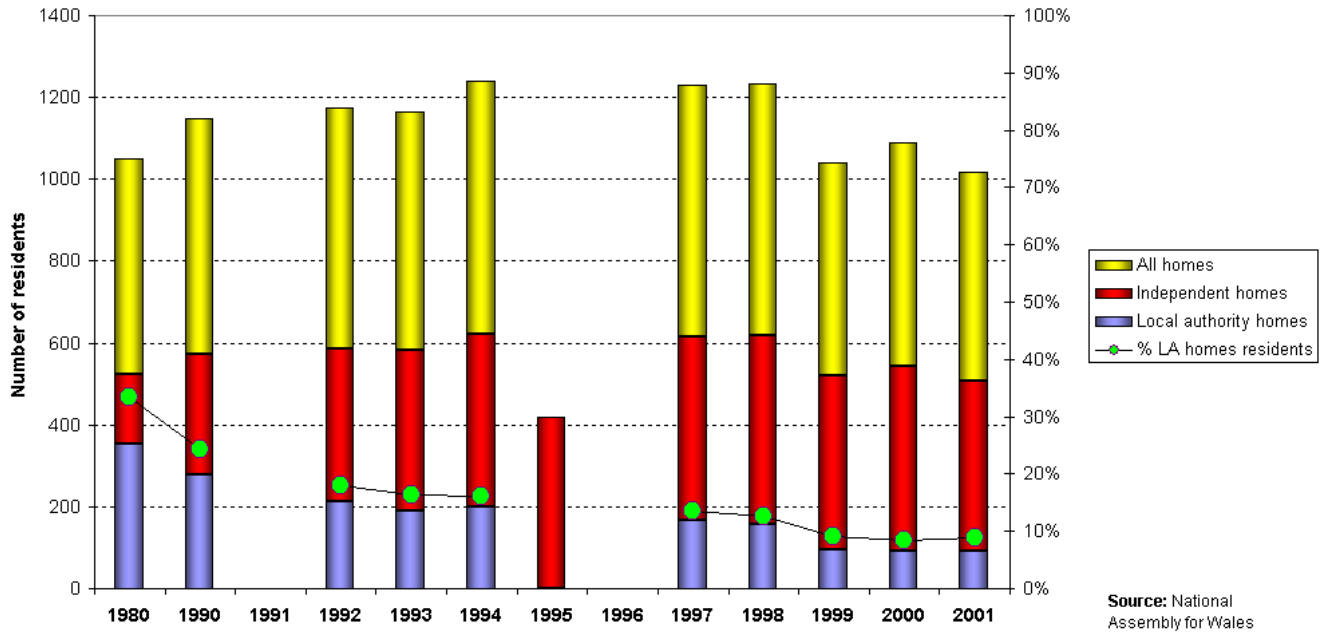


Figure 5.14 England: Adults with mental health problems helped to live at home per 1,000 population aged 18-64.

