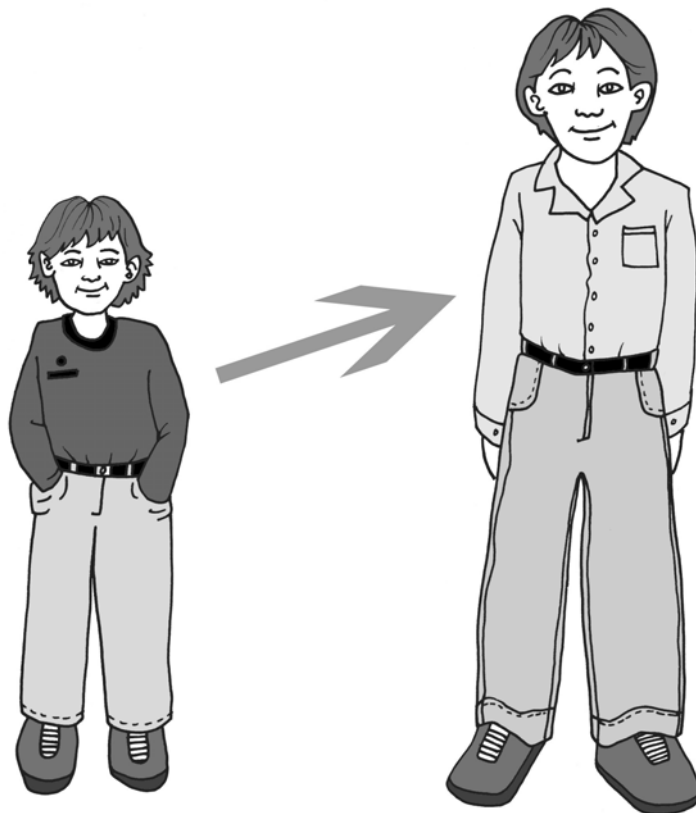


The Road Ahead?

Appendix C

A review of available information resources on transition for young people with learning difficulties, families and professionals



Debby Watson
Norah Fry Research Centre
University of Bristol
3 Priory Road
Bristol BS8 1TX
Debby.watson@bristol.ac.uk

National Information for Young People

General – Covering most aspects of Transition

Ref	Organisation & Contact Details	Title	Target Audience & Content	Availability & Updates
N1	<p>Care Choices Limited</p> <p>Care Choices Limited Valley Court Croyden Nr. Royston Hertfordshire, SG8 0HF Tel: 01223 207770 Fax: 01223 207108 Web: www.carechoices.co.uk</p>	<i>Progress 2004</i>	<p>13-25 year old disabled young people.</p> <p>Newspaper style 32 page publication giving information on looking ahead, education, employment, housing, holidays, social life, driving, money, legal support and advocacy.</p>	<p>Distributed primarily through Connexions Personal Advisors but also through Contact a Family, carers, social workers, outreach support workers and advocacy groups.</p> <p>Produced in 2003.</p>
N2	<p>United Response and The Citizenship Foundation</p> <p>United Response 113-123 Upper Richmond Road London, SW15 2TL Tel: 020 8246 5200 Web: www.united-response.co.uk</p> <p>The Citizenship Foundation Ferroners House, Shaftesbury Place Off Aldersgate Street London, EC2Y 8AA Tel: 020 7367 0500 Web: www.citfou.org.uk</p> <p>To Order Fax: 01347 823242 Email: passport@united-response.cok.uk</p>	<i>Passport to Life</i>	<p>Young disabled people.</p> <p>Guide to where to get more help and information on rights and responsibilities as citizens. Booklet and CD which can be used together. The guide covers learning, working, benefits, money, buying things, travel, leisure, social services, where you live, health care, relationships, abuse and saying 'no', fire, ambulance and police services and keeping safe.</p>	<p>Available from United Response or the Citizenship Foundation.</p> <p>Produced in 2001.</p>

National Information for Young People

General – Covering most aspects of Transition

Ref	Organisation & Contact Details	Title	Target Audience & Content	Availability & Updates
N3	<p>Facilitating Inclusion North East (FINE)</p> <p>Facilitating Inclusion North East (FINE) North East SEN Regional Partnership Government Office for the North East Wellbar House Gallowgate Newcastle-upon-Tyne, NE1 4TD Tel: 0191 202 3587 Fax: 0191 202 3510 Web: www.fine-partnership.org.uk (password needed)</p>	<p><i>TransPlan</i></p> <p>Your guide to successful transition from school to adult life for young people age 13-19 with additional education needs.</p>	<p>Young people age 13-19 with additional educational needs.</p> <p>A CD Rom which is divided into sections for young people age 13-19 with additional educational needs, parents, carers and organisations. Written in plain English. Contains 13 sample forms and information leaflets and over 80 links. Young people, parents and carers guides available orally.</p>	<p>Available free through Prolog at: dfes@prolog.com.uk Quote reference: TRANSPLAN1</p> <p>Produced in 2002.</p> <p>No information on updates.</p>

Choices - Housing

Ref	Organisation & Contact Details	Title	Target Audience & Content	Availability & Updates
N4	<p>Foundation for People with Learning Disabilities</p> <p>Foundation for People with Learning Disabilities 83 Victoria street London, SW1H 0HW Tel: 020 7802 0300 Fax: 020 7802 0301 Web: www.learningdisabilities.org.uk</p>	<p><i>Get Moving!</i></p> <p>Making a choice about where to live.</p>	<p>Young people with learning disabilities who are thinking of moving home.</p> <p>Explains the different options in an accessible style. Gives case examples and information on where to go for more help.</p>	<p>Available from the Foundation for People with Learning Disabilities as a booklet (£2) or is free as a downloadable document from their website.</p>

National Information for Young People

Choices - Education

Ref	Organisation & Contact Details	Title	Target Audience & Content	Availability & Updates
N5	<p>Enquire</p> <p>Tel: 0845 123 2303 Email: enquire.SENinfo@childreninscotland.org.uk Web: www.enquire.org.uk</p>	<p><i>Life at school and choices at 16+</i></p> <p>A guide for secondary students who need extra care and support.</p>	<p>Secondary students who need extra support (Scotland).</p> <p>Guide is in three parts: 1 - Life at school 2 - Taking part at school 3 - Choices at 16 and leaving school.</p>	<p>Enquire has also produced a video. A helpline is available. Guide is downloadable from the Enquire website.</p> <p>No information on updates.</p>
N6	<p>Royal National College for the Blind</p> <p>Royal National College for the Blind Tel: 01432 265725 Fax: 01432 353478 Email: aj@rncb.ac.uk Website: www.rncb.ac.uk</p>	<p><i>16UP</i></p> <p>A guide to Further Education for school leavers who are blind or partially sighted.</p>	<p><i>Life at school and choices at 16+</i></p> <p>A guide for secondary students who need extra care and support.</p>	<p>Available from the Royal National College for the Blind. Not written in an accessible format.</p> <p>No information on updates</p>

National Information for Young People

Choices - Work

Ref	Organisation & Contact Details	Title	Target Audience & Content	Availability & Updates
N7	<p>NIACE</p> <p>NIACE 21 De Montfort Street Leicester, LE1 7GE Tel: Rachel Johnson 0116 204 4216 Web: www.niace.org.uk</p>	<p><i>Making the jump</i></p> <p>Including learner's pack.</p>	<p>Young people with learning disabilities wanting to make the transition to work.</p> <p>Learner's pack gives help and examples of people with learning disabilities getting work. In large print, written in clear language, with illustrations. 100 pages. Available on audio CD.</p>	<p>£15 from Rachel Johnson at NIACE on 0116 204 4216.</p> <p>Published in 2002.</p> <p>No information on updates.</p>

Changes - Transport

Ref	Organisation & Contact Details	Title	Target Audience & Content	Availability & Updates
N8	<p>Southend Special School/ Centre for Transport Studies, University College London</p> <p>Centre for Transport Studies Chadwick Building, Gower Street, London, C1E 6BT Tel: 020 7679 7009 Web: www.cts.ucl.ac.uk/arg/projects/trumpet2.htm</p>	<p><i>Going Places</i></p>	<p>Young people with learning disabilities in transition.</p> <p>Game to help young people with their travel training. Comes with template for game and instructions.</p>	<p>Downloadable from University College, London website.</p> <p>No information on updates.</p>

National Information for Young People

Feelings and Emotions

Ref	Organisation & Contact Details	Title	Target Audience & Content	Availability & Updates
N9	<p>Foundation for People with Learning Disabilities</p> <p>Foundation for People with Learning Disabilities 83 Victoria street London, SW1H 0HW Tel: 020 7802 0300 Fax: 020 7802 0301 Web: www.learningdisabilities.org.uk</p>	<p><i>All about feeling down</i></p> <p>A booklet for young people with learning disabilities.</p>	<p>Young people with learning disabilities.</p> <p>An 18 page guide for young people about what to do if they feel down. Focuses on emotional well-being, particularly at transition. Written in an accessible format.</p>	<p>Available from the Foundation for People with Learning Disabilities.</p> <p>Written April 2003.</p>

Service & Policy Development – Direct Payments

Ref	Organisation & Contact Details	Title	Target Audience & Content	Availability & Updates
N10	<p>North London Connexions/ Arcadian Productions</p> <p>Empower 2001 21a Muswell Road, London, N10 2BJ Email: hq@empower2001.org.uk Web: www.empower2001.org.uk</p>	<p><i>Empower 2001</i></p>	<p>Young people who want to use or become a Personal Assistant.</p> <p>Video, used for training purposes. BSL version available. Covers how to get a PA, what to look for in a PA and difficult issues that might arise.</p>	<p>Available from Empower. £10.</p> <p>Produced in 2001.</p>

National Information for Young People

Service & Policy Development – Transition Planning

Ref	Organisation & Contact Details	Title	Target Audience & Content	Availability & Updates
N11	<p>SEN Regional Partnership (South West)</p> <p>Web: www.sw-special.co.uk</p>	<i>Planning my Future</i>	<p>Young people with learning difficulties.</p> <p>An accessible pack to help young people work out what is best for them over the next few years. Explains the transition process and allows young people to fill in the pack with their own needs.</p>	<p>Available from the SEN website and via schools.</p> <p>No information on updates.</p>
N12	<p>West Midlands NHS</p> <p>National Youth Agency 17 - 23 Albion Street Leicester, LE1 6GD Tel: 0116 285 3700 Email: nya@nya.org.uk Web: www.nya.org.uk</p>	<i>The Big Picture: Your guide to transition</i>	<p>Young disabled people aged 13-25.</p> <p>28 page guide being piloted by West Midlands NHS. Part of the 'Transition Pathway Project' (Chris Scholl). Written in an accessible style. Includes information on who can help you, what happens in transition and some sources of information.</p>	<p>Will be available in final form in the autumn of 2004.</p>

National Information for Young People & Families (some including information for professionals)

General – Covering most aspects of Transition

Ref	Organisation & Contact Details	Title	Target Audience & Content	Availability & Updates
N13	<p>Home Farm Trust/ Norah Fry Research Centre</p> <p>Pavilion Publishing (Brighton) Ltd The Ironworks Cheapside Brighton, BN1 4GD Tel: 01273 623222 Fax: 01273 625526 Email: info@pavpub.com Web: www.pavpub.com</p>	<p><i>All Change</i></p> <p>Transition into adult life – a resource for young people with learning difficulties, family carers and professionals).</p> <p>By Robina Mallett & Margaret Power (of HFT) and Pauline Heslop (Norah Fry Research Centre)</p>	<p>Young people with learning difficulties, family carers and professionals.</p> <p>A 246-page folder for young people with learning difficulties, carers and professionals. In two parts. Part 1 is for adults who are supporting young people through transition. It includes sections on planning, choices, adult services, living life to the full. Part 2 is for the young people themselves and includes sections on transition, planning for the future, new choices and becoming an adult.</p>	<p>Available via Pavilion Publishing. £65.95. Parts of the pack are photocopyable.</p> <p>Written in 2003.</p> <p>No information on updates.</p>
N14	<p>National Children’s Bureau/ Council for Disabled Children</p> <p>National Children’s Bureau 8 Wakley Street London, EC1V 7QE Tel: 020 7843 6000 Web: www.ncb.org.uk</p> <p>Book Sales Tel: 0207843 6029 Email: booksales@ncb.org.uk</p>	<p><i>Growing up</i></p> <p>A guide to some information sources for young disabled people and their families.</p>	<p>Disabled young people, their families and professionals.</p> <p>100 page+ ring-bound book. Lists a wide range of information sources that will help disabled young people and families make decisions on topics such as education, employment, benefits, personal and social relationships and leaving home.</p>	<p>Available from the Council for Disabled Children (NCB). £12. Also available on disk at the same price. Not written in an accessible format.</p> <p>Published 1998.</p>

National Information for Young People & Families (some including information for professionals)

General – Covering most aspects of Transition

Ref	Organisation & Contact Details	Title	Target Audience & Content	Availability & Updates
N15	<p>National Development Team</p> <p>Inclusion distribution Tel: 01473 836440 Email: sales@inclusiononline.co.uk Web: www.inclusiononline.co.uk</p>	<p><i>Families Leading Planning: Looking to the future</i></p>	<p>Young people with learning disabilities, their families, carers and professionals.</p> <p>A pack, containing information about Person Centred Planning. Photocopiable resources. CD Rom included. Focus is on Person Centred Planning at transition.</p> <p>Pack is two main parts – a guide which includes the information needed to make an 'Essential Lifestyle Plan' and 'Pages to Complete' to write in, some with the person whose plan is being developed.</p>	<p>Produced in 2003.</p> <p>No information on updates.</p> <p>Includes information on how to join a web-based discussion group.</p>
N16	<p>Scope</p> <p>Action 19+, C/o Scope Campaigns 6 Market Road London, N7 9PW Tel: 0171 619 7253 Email: campaigns@scope.org.uk</p>	<p><i>Action 19+:</i></p>	<p>Disabled people, carers and advocates.</p> <p>A guide to getting what you need from your local authority at 19+, free newsletter, video, telephone advice and information, speakers and workshop leaders.</p>	<p>National steering group meets regularly to co-ordinate work of the project and refer to 60 local groups.</p> <p>Available from Action 19+. £5 to disabled people, parents, advocates and carers and £10 to others.</p>

National Information for Young People & Families (some including information for professionals)

General – Covering most aspects of Transition

Ref	Organisation & Contact Details	Title	Target Audience & Content	Availability & Updates
				Updated in 2003 to include new chapter on transition to adult services and changes in the law.
N17	<p>Facilitating Inclusion North East (FINE)</p> <p>Facilitating Inclusion North East North East SEN Regional Partnership Government Office for the North East Wellbar House Gallowgate Newcastle-upon-Tyne, NE1 4TD Tel: 0191 202 3587 Fax: 0191 202 3510 Web: www.fine-partnership.org.uk</p>	<p><i>TransPlan</i></p> <p>Your guide to successful transition from school to adult life for young people age 13-19 with additional education needs.</p>	<p>Young people age 13-19 with additional educational needs, parents, carers and organisations.</p> <p>A CD Rom which is divided into sections for young people age 13-19 with additional educational needs, parents, carers and organisations. Written in plain English. Contains 13 sample forms and information leaflets and over 80 links. Young people, parents and carers guides available orally.</p>	<p>Available from FINE.</p> <p>Produced in 2002.</p> <p>No information on updates.</p>
N18	<p>SNAP Cymru (Special Needs Advisory Project)</p> <p>SNAP Cymru Central Office 45 Penarth Road Cardiff, CF1 5DJ Tel: 029 2038 8776 Email: snapcym@aol.com Web: www.snapcymru.co.uk</p>	<p><i>Supporting Families of Children with Special Educational Needs</i></p>	<p>Families of children with special educational needs.</p> <p>Information sheets about supporting children with special educational needs. Newsletter – ‘Snapshot’. Covers most parts of Wales.</p>	<p>Includes a sheet about choices after 16 with basic information about further education. Career service at SNAP can offer advice.</p> <p>No information on updates.</p>

National Information for Young People & Families (some including information for professionals)

General – Covering most aspects of Transition

Ref	Organisation & Contact Details	Title	Target Audience & Content	Availability & Updates
N19	<p>Contact a Family</p> <p>Contact a Family 209-211 City Road London, EC1V 1JN Tel: 020 7608 8700 Fax: 020 7608 8701 Minicom: 020 7608 8702 Helpline: 0808 808 3555 Email: info@cafamily.org.uk Web: www.cafamily.org.uk</p>	<p><i>Transition in England and Wales</i></p> <p>A guide for family members.</p>	<p>Families who care for children with any disability or need.</p> <p>Factsheet on transition in England and Wales. Contains useful information on the process of transition and gives contact details of useful organisations.</p>	<p>Available from Contact a Family. Downloadable from website.</p> <p>Latest version May 2003.</p> <p>Updated regularly.</p>

National Information for Young People & Families (some including information for professionals)

Choices - Housing and Accommodation

Ref	Organisation & Contact Details	Title	Target Audience & Content	Availability & Updates
N20	<p>Joseph Rowntree Foundation (Alison Cowen)</p> <p>Pavilion Publishing (Brighton) Ltd The Ironworks Cheapside Brighton BN1 4GD Tel: 01273 623222 Fax: 01273 625526 Email: info@pavpub.com Web: www.pavpub.com</p>	<p>Room to Move</p> <p>A book and video for parents of young people with learning disabilities making the transition from home to independent living.</p>	<p>Parents of young people with learning disabilities leaving home, staff and managers working with families, young people leaving home.</p> <p>A5, 100 page book and video. Looks at issues involved when young people with learning disabilities leave home. Includes initial discussions about leaving home, planning and timing the move, after the move and the long term. Helps to keep the young person at the centre of the decision- making process.</p>	<p>Available from Pavilion Publishing. £45 for book and video.</p> <p>Produced in 2001.</p>
N21	<p>Housing Options</p> <p>Housing Options 78a High Street Witney Oxfordshire, OX28 6HL Tel: 0845 4561497 Email: enquiries@housingoptions.org.uk Web: www.housingoptions.org.uk</p>	<p><i>Housing Options – Tools for planning</i></p>	<p>Professionals who help with planning housing options.</p> <p>A resource pack which includes the 'Your place to live' manual and video, 'Where I want to live' photocards and other Housing Options publications.</p>	<p>Disseminated via workshops. £140 per delegate.</p> <p>Regularly updated via conference programme. Information also available on their website.</p>

National Information for Young People & Families (some including information for professionals)

Feelings and Emotions

Ref	Organisation & Contact Details	Title	Target Audience & Content	Availability & Updates
N22	<p><i>Foundation for People with Learning Disabilities</i></p> <p>Foundation for People with Learning Disabilities 83 Victoria street, London, SW1H 0HW Tel: 020 7802 0300 Fax: 020 7802 0301 Web: www.learningdisabilities.org.uk</p>	<p><i>Meeting the emotional needs of young people with learning disabilities</i></p> <p>A booklet for parents and carers.</p>	<p>Parents and carers of young people with learning disabilities.</p> <p>A 32 page booklet giving advice about how to help young people to be emotionally strong, including advice about the emotional aspects of transition planning.</p>	<p>Available for £2 from the Foundation for People with Learning Disabilities.</p> <p>Written in 2003.</p>

Feelings and Emotions - Sexuality

Ref	Organisation & Contact Details	Title	Target Audience & Content	Availability & Updates
N23	<p><i>Catalyst Education</i></p> <p>Catalyst Education Resources Ltd. 1A Potters Cross, Wootton Bedfordshire, MK43 9JG Web: www.cerl.net/books/sexed.htm</p>	<p><i>Sex Education and sexuality for very special people: A sensory approach</i></p>	<p>Families and professional carers.</p> <p>Covers topics such as growing up, adulthood, masturbation, menstruation and understanding gender. 147 pages.</p>	<p>Available from Catalyst Education, £14.</p> <p>Written in 1997.</p>
N24	<p><i>Family Planning Association</i></p> <p>Family Planning Association PO Box 1078, East Oxford DO Oxford, OX4 6JE Tel: 01865 719418 Web: www.fpa.org.uk</p>	<p><i>Talking Together about growing up</i></p> <p>A workbook for parents of children with learning disabilities.</p>	<p>Parents of children with learning difficulties.</p> <p>Contains exercises to help parents introduce topics such as puberty, body parts, public and private behaviour, keeping safe and feelings and relationships.</p>	<p>Available from fpa.</p> <p>Written in 1999 in an accessible style.</p>

National Information for Young People & Families (some including information for professionals)

Feelings and Emotions – Sexuality (cont.)

Ref	Organisation & Contact Details	Title	Target Audience & Content	Availability & Updates
N25	<p><i>Family Planning Association</i></p> <p>Family Planning Association PO Box 1078, East Oxford DO Oxford, OX4 6JE Tel: 01865 719418 Web: www.fpa.org.uk</p>	<p><i>Talking together about sex and relationships</i></p>	<p>Schools, parents and carers, Suitable for work with people aged 13 and above.</p> <p>Follow-up to 'Talking together about growing up'.</p>	<p>£14.99 from fpa.</p> <p>No information on updates.</p>

Changes – Girlfriends, Boyfriends, Sex & Sexuality

Ref	Organisation & Contact Details	Title	Target Audience & Content	Availability & Updates
N26	<p><i>Catalyst Education</i></p> <p>Catalyst Education Resources Ltd. 1A Potters Cross, Wootton Bedfordshire, MK43 9JG Web: www.cerl.net/books/sexed.htm</p>	<p><i>Sex Education and sexuality for very special people: A sensory approach</i></p>	<p>Families and professional carers.</p> <p>Covers topics such as growing up, adulthood, masturbation, menstruation and understanding gender. 147 pages.</p>	<p>Available from Catalyst Education, £14.</p> <p>Written in 1997.</p>
N27	<p><i>Family Planning Association</i></p> <p>Family Planning Association PO Box 1078, East Oxford DO Oxford, OX4 6JE Tel: 01865 719418 Web: www.fpa.org.uk</p>	<p><i>Talking Together about growing up</i></p> <p>A workbook for parents of children with learning disabilities.</p>	<p>Parents of children with learning difficulties.</p> <p>Contains exercises to help parents introduce topics such as puberty, body parts, public and private behaviour, keeping safe and feelings and relationships.</p>	<p>Available from fpa.</p> <p>Written in 1999 in an accessible style.</p>

National Information for Young People & Families (some including information for professionals)

Changes – Girlfriends, Boyfriends, Sex & Sexuality (cont.)

Ref	Organisation & Contact Details	Title	Target Audience & Content	Availability & Updates
N28	<p><i>Family Planning Association</i></p> <p>Family Planning Association PO Box 1078, East Oxford DO Oxford, OX4 6JE Tel: 01865 719418 Web: www.fpa.org.uk</p>	<p><i>Talking together about sex and relationships</i></p>	<p>Schools, parents and carers, Suitable for work with people aged 13 and above.</p> <p>Follow-up to 'Talking together about growing up'.</p>	<p>£14.99 from fpa .</p> <p>No information on updates.</p>

National Information for Young People & Families (some including information for professionals)

Services & Policy Development - Transition Planning

Ref	Organisation & Contact Details	Title	Target Audience & Content	Availability & Updates
N29	SEN Regional Partnership (South West) Web: www.sw-special.co.uk	<i>A short guide to Transition Planning for schools</i>	Families and professionals. It has sections on Who is the Guidance for? What is a Transition Plan? Who is Responsible for Transition Plans? What should be in the Transition Plan? What are the Core Principles of Transition Planning? The Statutory Framework, Additional Sources of Guidance. The Additional Sources of Guidance section is particularly useful and has links to other guidance and information packs including: Pathway to Transition pack and guidance (Plymouth HAZ and Connexions); Leaving School (a directory/pack); NE Regional Partnership Transition Planning CD Rom.	Available from the SEN Regional Partnership website. No information on updates.

National Information for Young People & Families (some including information for professionals)

Services & Policy Development - Transition Process

Ref	Organisation & Contact Details	Title	Target Audience & Content	Availability & Updates
N30	<p>Foundation for People with Learning Disabilities</p> <p>Foundation for People with Learning Disabilities 83 Victoria street London SW1H 0HW Tel: 020 7802 0300 Fax: 020 7802 0301 Web: www.learningdisabilities.org.uk</p>	<p><i>Learning disabilities and the family: The teenager with a severe disability</i></p>	<p>Parents, close family members and friends of teenagers with a severe learning disability.</p> <p>16 page booklet. Includes useful contacts. Uses quotes from parents to illustrate and explain the transition process. Includes a checklist and useful resources.</p>	<p>Booklet is now out of print but is downloadable from FPLD website.</p> <p>Produced in 1998.</p>
N31	<p>Foundation for People with Learning Disabilities</p> <p>Foundation for People with Learning Disabilities 83 Victoria street London, SW1H 0HW Tel: 020 7802 0300 Fax: 020 7802 0301 Web: www.learningdisabilities.org.uk</p>	<p><i>Transition from school or college for young people with learning disabilities</i></p>	<p>Families and professionals.</p> <p>Factsheet available from FPLD. Explains the transition process, lists useful organisations and publications. From the website you can also join a discussion forum and read other people's stories.</p>	<p>Downloadable from FPLD website or write to the Foundation for People with Learning Disabilities.</p> <p>Page updated 19.11.03.</p>

National Information for Professionals & Partnership Boards

General - Ethnicity

Ref	Organisation & Contact Details	Title	Target Audience & Content	Availability & Updates
N32	<p>ARC</p> <p>ARC House Marsden Street Chesterfield S40 1JY Tel. 01246 555043 Web: www.arcuk.org.uk</p>	<p><i>The Ethnicity Toolkit for Learning Disability Partnership Boards</i></p>	<p>Aimed at people from ethnic communities in relation to the implementation of 'Valuing People'.</p> <p>A toolkit for Learning Disability Partnership Boards to use in their local communities. Accessible version available.</p>	<p>Available from 'Valuing People' website</p>
N33	<p>Valuing People Support Team</p> <p>Martin Routledge Valuing People Support Team C/o NWTDT The Globe St James Square Accrington, BB5 0RE Tel: 01254 306858 Web: www.valuingpeople.gov.uk/documents/EthnicityFrameworkMainText.pdf</p>	<p><i>Learning difficulties and ethnicity: A framework for action</i></p>	<p>Transition champions.</p> <p>Includes a chapter on transition, highlighting issues that are of particular relevance to young people from minority ethnic communities.</p>	<p>Available from 'Valuing People' website or Martin Routledge.</p> <p>No information on updates.</p>

National Information for Professionals & Partnership Boards

Choices - Housing

Ref	Organisation & Contact Details	Title	Target Audience & Content	Availability & Updates
N34	<p>Housing Options</p> <p>Housing Options 78a High Street Witney Oxfordshire, OX28 6HL Tel: 0845 4561497 Email: enquiries@housingoptions.org.uk Web: www.housingoptions.org.uk</p>	<p><i>Housing Options – Tools for planning</i></p>	<p>Professionals who help with planning housing options.</p> <p>A resource pack which includes the 'Your place to live' manual and video, 'Where I want to live' photocards and other Housing Options publications.</p>	<p>Disseminated via workshops. £140 per delegate.</p> <p>Regularly updated via conference programme. Information also available on their website.</p>

Choices - Work

Ref	Organisation & Contact Details	Title	Target Audience & Content	Availability & Updates
N35	<p>NIACE</p> <p>Tel: Rachel Johnson 0116 204 4216 Web: www.niace.org.uk</p>	<p><i>Making the jump</i></p> <p>Including learner's pack.</p>	<p>Professionals planning courses. Learner's pack is for young people with learning disabilities wanting to make the transition to work.</p> <p>Resource that includes information on how to set up a course to help people with learning difficulties make the transition to work, overview of policy. Learner's pack gives help and examples of people with learning disabilities getting work.</p>	<p>Learner's pack is in an accessible format and available on audio CD</p> <p>No information on updates.</p>

National Information for Professionals & Partnership Boards

Services & Policy Development – Transition Planning

Ref	Organisation & Contact Details	Title	Target Audience & Content	Availability & Updates
N36	<p>Department of Health Valuing People Support Team</p> <p>Web: www.valuingpeople.gov.uk</p>	<p><i>Information Pack for Transition Champions</i></p>	<p>Transition champions on Partnership Boards.</p> <p>65 pages on the role of transition champions, getting started via Partnership Boards, who's involved, etc., plus information on the main services involved in transition (Connexions, Social Services and Education).</p>	<p>Written in plain English. Available from the Valuing People website.</p> <p>No information on updates.</p>
N37	<p>Institute for Applied Health & Social Policy and King's College, London</p> <p>Web: nic@rowland-crosby.freeserve.co.uk</p>	<p><i>Transition for young people with learning disabilities: Developing local practice</i></p>	<p>Service Managers.</p> <p>Help to formulate an action plan for transition in a local area. Includes 4 parts:</p> <ol style="list-style-type: none"> 1 - Pathways to transition, 2 - Sharing assessment, planning and information 3 - Linking children's services and adult services 4 - Keeping the young person in the middle - leaving school - what next? 	<p>No information on updates.</p>

National Websites

Services and Policy Development – Transition Planning

Ref	Organisation & Contact Details	Title	Target Audience & Content	Availability & Updates
N38	<p>Department for Education and Skills. SEN Regional Partnerships</p> <p>DfES Publications Centre Tel: 0845 60 222 60 Web: www.dfes.gov.uk/sen</p>	<p><i>Transition Planning</i></p> <p>Case Study 7</p>	<p>Professionals.</p> <p>Describes the work of three SEN Regional Partnerships (East of England, North East & South West) on transition planning and points to further information about them.</p>	<p>Available from the DfES.</p> <p>No information on updates.</p>

Services and Policy Development – Transition Planning - Support

Ref	Organisation & Contact Details	Title	Target Audience & Content	Availability & Updates
N39	<p>AAC Research Team, Dept. of Psychology, University of Stirling</p> <p>Augmentative and Alternative Communication (AAC) Research Team, Dept. of Psychology University of Stirling Stirling, FK9 4LA Tel: 01786 467645 Web: www.aacscotland.com</p>	<p><i>Talking Mats and learning disability</i></p>	<p>People working with people with a learning disability, particularly those with a communication difficulty.</p> <p>Book containing guidelines and <i>Talking Mats</i> training package. Accompanying video shows <i>Talking Mats</i> being used with 3 people.</p>	<p>Available for £50 from AAC.</p> <p>Produced in 2002.</p> <p>No information on updates.</p>

National Websites

Services and Policy Development – Transition Planning – Support (cont.)

Ref	Organisation & Contact Details	Title	Target Audience & Content	Availability & Updates
N40	<p>Children’s Society/ DoH/JRF</p> <p>Chris Osbourne The Children’s Society Edward Rudolf House, Margery Street London, WC1X 0JL Tel: 020 7841 4400 Fax: 020 7841 4500 Email: info@childrenssociety.org.uk Web: www.childrenssociety.org.uk</p>	<p><i>Ask Us2</i></p> <p>A multimedia consultation with disabled children and young people 1 and 2.</p>	<p>Key people in local authorities who are taking forward the Quality Protects programme. Presents key messages from young people.</p> <p>CD Roms on consulting with disabled children.</p>	<p>Available from the Children’s Society, £5.</p> <p>Produced in 2003.</p>

Services and Policy Development - Personal Assistants

Ref	Organisation & Contact Details	Title	Target Audience & Content	Availability & Updates
N41	<p>National Youth Agency</p> <p>The National Youth Agency 17 - 23 Albion Street Leicester, LE1 6GD Switchboard - 0116 285 3700 Enquiry Desk - 0116 285 3792 Fax - 0116 285 3777 Minicom - 0116 285 3788 E-mail: nya@nya.org.uk Enquiry Desk: dutydesk@nya.org.uk Web: www.nya.org.uk</p>	<p><i>Creating independence and inclusion</i></p> <p>Youth personal support scheme - good practice guidelines.</p>	<p>Young disabled people, carers and professionals.</p> <p>Book and video pack describing the journey of the Youth Personal Assistance Support Scheme - a project developed by WECIL. In 2 parts, ‘setting the scene’ (policy context, principles, values and definitions, respite care and personal assistance) and ‘good practice guidelines’ which describe the work of Youth Pass.</p>	<p>Available from the NYA.</p> <p>No information on updates.</p>

National Websites

Feelings & Emotions - Sexuality

Ref	Organisation & Contact Details	Title	Target Audience & Content	Availability & Updates
N42	Family Planning Association Family Planning Association PO Box 1078, East Oxford DO Oxford, OX4 6JE Tel: 01865 719418 Web: www.fpa.org.uk	<i>Sexuality and learning disability</i>	Staff who work with people with learning disabilities Highlights a range of creative approaches to working with people with learning disabilities. Based on learning disability training carried out by the fpa.	£9.99 from fpa. No information on updates.

Changes – Girlfriends, Boyfriends, Sex & Sexuality

Ref	Organisation & Contact Details	Title	Target Audience & Content	Availability & Updates
N43	Family Planning Association Family Planning Association PO Box 1078, East Oxford DO Oxford, OX4 6JE Tel: 01865 719418 Web: www.fpa.org.uk	<i>Sexuality and learning disability</i>	Staff who work with people with learning disabilities. Highlights a range of creative approaches to working with people with learning disabilities. Based on learning disability training carried out by the fpa.	£9.99 from fpa. No information on updates.

National Websites

General

Ref	Organisation & Contact Details	Title	Target Audience & Content	Quality & Updates
W1	<p>Connexions</p> <p>Web: www.connexions-direct.com</p>	<i>Connexions direct</i>	<p>Young people aged 13-19.</p> <p>Links to local Connexions services. Also gives information about the 'Widening Horizons' information service used by many schools, colleges or training providers. The 'learning for people with disabilities' link is mostly aimed at people with physical disabilities, but provides a link to 'After 16 – what's new' website (Family Fund).</p>	<p>Not specifically geared towards young people with learning disabilities. Not written accessibly.</p> <p>No information on updates.</p>
W2	<p>Down's Syndrome Association</p> <p>Langdon Down Centre 2a Langdon Park Teddington, TW11 9PS Tel: 0845 230 0372 Fax:0845 230 0372 Email: info@downs-syndrome.org.uk Web: www.downs-syndrome.org.uk</p>	<i>Down2Earth</i>	<p>Young people with Down's syndrome.</p> <p>Links to Club NDSS via the 'Down 2 Earth' section on the website. Club NDSS gives advice for young people on transitions, housing, life skills, money and safety.</p>	<p>Club NDSS is an American site, but presented in an accessible format. No relevant information specifically for young people on the DSA site.</p> <p>No information on updates.</p>

National Websites

General

Ref	Organisation & Contact Details	Title	Target Audience & Content	Quality & Updates
W3	<p>Enquire - Children in Scotland</p> <p>Tel: 0845 123 2303 Email: enquire.SENinfo@childreninscotland.org.uk Web: www.enquire.org.uk</p>	<i>Enquire</i>	<p>Children with special educational needs (Scotland).</p> <p>Website specifically for young people (with links to site for parents and professionals). Links to 'Life at school and choices at 16+ (see national information). Sections on: 'respect yourself!', 'meeting people and finding out of school clubs', 'who can help you?', 'choosing subjects and getting ready for exams' and 'looking to the future'. Includes an interactive map which as well as giving advice about clubs, also advises about keeping safe. Links to other websites by subject.</p>	<p>Clear site, not all very accessible, but excellent downloadable leaflet on 'people at school' which explains the roles of all the professionals that a young person with special needs might encounter and other useful information. Covers Scotland.</p> <p>No information on updates, but recently produced.</p>
W4	<p>Family Fund</p> <p>Family Fund, PO Box 50 York, YO1 9ZX</p> <p>Web: www.after16.org.uk</p>	<i>After 16 – what's new?</i>	<p>Young people with impairments or disabilities, parents, carers and professionals.</p> <p>Includes detailed information and links. Covers 'your future', money, learning, daytime and work, housing, transport and leisure, friends and health, the law and a directory. Links to other useful websites.</p>	<p>'User-friendly' style and compatible with speech reader software. Does not link well from the Family Fund website. Book version no longer available.</p> <p>Last updated November 2003.</p>

National Websites

General

Ref	Organisation & Contact Details	Title	Target Audience & Content	Quality & Updates
W5	<p>Foundation for People with Learning Disabilities</p> <p>Foundation for People with Learning Disabilities 83 Victoria street London, SW1H 0HW Tel: 020 7802 0300 Fax: 020 7802 0301 Web: www.learningdisabilities.org.uk</p>	<p><i>Transition from school or college for young people with learning disabilities</i></p>	<p>Families and professionals.</p> <p>Factsheet available online from FPLD. Explains the transition process, lists useful organisations and publications. From the website you can also join a discussion forum and read other people's stories.</p>	<p>Learning Disabilities.</p> <p>Page updated 19.11.03.</p>
W6	<p>Including you social enterprise</p> <p>Web: www.includingyou.org</p>	<p><i>Including you</i></p>	<p>Families of children with special needs.</p> <p>Website that includes a section on transition. Aimed primarily at families in East Sussex.</p>	<p>Includes links to relevant organisations and information about the Connexions service. Also includes an edited version of East Sussex's Transition Protocol.</p>

National Websites

General

Ref	Organisation & Contact Details	Title	Target Audience & Content	Quality & Updates
W7	<p>Mencap</p> <p>Web: www.trans-active.org.uk</p>	<i>Trans-active</i>	<p>Young people with and without a learning disability.</p> <p>Multimedia web site resource of accessible information about planning process for young people aged 13-25. Idea is to create a multimedia 'passport' about transition for individuals. Pack also available. Has two main areas – a 'TeenZone' for young people with learning difficulties and an area for 'parents, carers and teachers'. The 'TeenZone' is divided into 4 areas where young people (with help) can access; a 10 level game that explains transition, a description of the Trans-active project, Beat-box, which is music produced by the project and 'The bedroom' which contains music, fun, graffiti and games. The area for parents, carers and teachers covers news, 'about trans-active', the process, the Passport, the rewards, the package, the people and how to make a transition passport.</p>	<p>Not very easy to locate via the Mencap site or via a search engine. Need to have Macromedia Flash Player 7 installed. 'TeenZone', although presented in an accessible format would be best used in conjunction with a supporter. 'TeenZone' is also in audio format, with voices of young people with learning disabilities. The information zone covers wide range of aspects of transition and the trans-active project itself. Would be especially useful for schools undertaking transition planning.</p> <p>No information on updates.</p>

National Websites

General

Ref	Organisation & Contact Details	Title	Target Audience & Content	Quality & Updates
W8	<p>Surrey Children's Service</p> <p>Web: www.pwpsurrey.org</p>	<p><i>Options for the Future</i></p> <p>A what, when and how guide for parents as young disabled people make the transition to adult life.</p>	<p>Parents and Carers.</p> <p>129 page guide for parents of young disabled people. Also information on next moves, contacts and links</p>	<p>Although this website contains local information, it also has a wider applicability.</p> <p>Updated August 2003.</p>
W9	<p>Valuing People Support Team</p> <p>Web: www.valuingpeople.gov.uk/Transition.htm</p>	<p><i>Transition into adult life</i></p>	<p>Young people, parents and professionals.</p> <p>Includes the Transition 'Champions' pack. Documents on what 'Valuing People' says, key papers and events.</p>	<p>Mostly in accessible format.</p> <p>Updated regularly.</p>
W10	<p>Transition Information Network</p> <p>Tel: 020 7619 7244</p> <p>Web: www.myfuturechoices.org.uk</p>	<p><i>My Future Choices</i></p>	<p>Young people, parents and professionals.</p> <p>Website that includes a downloadable version of 'My Future Choices' magazine.</p>	<p>Part of the developing 'Transition Information Network'.</p>

National Websites

General - Ethnicity

Ref	Organisation & Contact Details	Title	Target Audience & Content	Quality & Updates
W11	<p>ARC</p> <p>This project is setting up a website (already launched) of information for young people at transition and their families. They were hoping to employ regional workers to promote the website but a reduction in funding from the Diana Fund has meant a more limited project.</p> <p>Web: www.movingonup.info</p> <p>Contact Pam Smith for further information. Tel: 01246 555 043 Email: pam.smith@arcuk.org.uk</p>	<p><i>Transition for young people from ethnic communities</i></p>		<p>In development.</p>

National Websites

Inclusion – Multi-media

Ref	Organisation & Contact Details	Title	Target Audience & Content	Quality & Updates
W12	<p>Acting Up</p> <p>Acting Up Unit 304 203-213 Mare St. London E8 3QE Tel: 0208 533 3344 Email: acting-up@geo2.poptel.org.uk Web: www.acting-up.org.uk</p>	<p><i>Acting Up Multimedia profiling</i></p>	<p>People with communication difficulties.</p> <p>Website which gives details of an innovative communications' training package, 'Multimedia profiling'. This package gives people with communication difficulties support to exercise greater control over their lives by means of a computer-based catalogue of a service user's daily activities and personal history.</p>	<p>Clear website with pictures. Not all pages are written in an accessible format.</p> <p>No information on updates.</p>
W13	<p>Mencap</p> <p>Web: www.thebigtree.org</p>	<p><i>The Big Tree</i></p>	<p>People with learning disabilities A developing portal site which will highlight good practice and host a forum for discussion around all aspects of multi-media use by people with learning disabilities. Housed by the Rix Centre. Their aim is to 'improve the inclusion of the learning disability community in the world of the internet and to use the capabilities of new media to promote inclusion across society generally'.</p>	<p>Site is still in development (29.10.04).</p>

Local Information for Young People, Families & Professionals

General – Covering most aspects of Transition

Ref	Organisation & Contact Details	Title	Target Audience & Content	Quality & Updates
L1	<p>Cheshire County Council Social Services, West Cheshire</p> <p>Cheshire County Council Social Services West Cheshire Goldsmith House Hamilton Place Chester Cheshire, CH1 1SE Tel: 01244 603450</p>	<p><i>A Guide to Services for Adults with Learning Disabilities</i></p>	<p>Carers of young adults with learning disabilities and who are due to leave school in 2-3 years.</p>	<p>Booklet. Describes services that are available and how to go about accessing them.</p>
L2	<p>City & Hackney Community Services NHS Trust</p> <p>Children with Disabilities Development Manager Hackney Children & Families Service 7 Marcon Place London, E8 1LP Tel: 0181 356 4290</p>	<p><i>Leaving School</i></p> <p>Opportunities for young people in Hackney - a directory of transition services for young people with special educational needs.</p>	<p>Primarily aimed at parents and carers.</p>	<p>An extensive guide to local and national information about the transition period. Includes a 'Student's Preparation for the Transition Plan' form.</p>
L3	<p>Mencap</p> <p>Mencap Office 44c Church Street Reigate, RH2 0AJ</p>	<p><i>Options for the Future</i></p> <p>A what, when and how guide for parents as young disabled people make the transition to adult life.</p>	<p>Parents and carers.</p>	<p>128 page guide for parents and carers. Includes extensive local and national information.</p>

Local Information for Young People, Families & Professionals

General – Covering most aspects of Transition

Ref	Organisation & Contact Details	Title	Target Audience & Content	Quality & Updates
L4	<p>North Somerset MENCAP Advice & Advocacy Service</p> <p>(Leaflet) Mencap Family Adviser Service Scotland House Combe Road Portishead, BS20 6BJ Tel: 01225 774342 Fax: 01275 843912</p> <p>(Directory) North Somerset MENCAP Advice & Advocacy Service 1 Verlands Congresbury North Somerset, BS49 5BL Tel/Fax: 01934 830435</p>	<p><i>Help for Young People with Special Needs</i></p> <p>AND</p> <p><i>Here to Help - in North Somerset</i></p>	<p>Young people with special needs, their parents/carers and professionals working with them.</p>	<p>Leaflet and Directory providing local and national information.</p>
L5	<p>Parents in Partnership (PIP)</p> <p>Parents in Partnership The Lodge Manfield Campus Kettering Road Northampton, NN3 6NP</p>	<p><i>Transition Planning</i></p>	<p>Parents and carers.</p>	<p>7 page leaflet about transition, giving local contact details.</p>

Local Information for Young People, Families & Professionals

General – Covering most aspects of Transition

Ref	Organisation & Contact Details	Title	Target Audience & Content	Quality & Updates
L6	<p>Parents in Partnership (PIP)</p> <p>Parents in Partnership (PIP) Croydon Tel: 020 8651 6198</p>	<p><i>Moving On</i></p> <p>A booklet to support Croydon young adults who have special needs.</p>	Young adults with special needs.	A publication by a parents' group to support young adults with special needs. Provides 'thumb nail sketches' of individuals' experiences. Gives 'signposting information'.
L7	<p>Partnership with Parents</p> <p>Partnership with Parents Furzefield Primary School Delabole Road Merstham Surrey, RH1 3PA Tel: 01737 737300</p>	<p><i>Your book for the future</i></p>	Young people with learning disabilities.	Ring-bound book, including a CD Rom. In accessible format, aimed at young people with learning disabilities. Gives local and national information. Includes cards with symbols that go with each section of the book. Written by 'Partnership with Parents'.

Local Information for Young People, Families & Professionals

General – Covering most aspects of Transition

Ref	Organisation & Contact Details	Title	Target Audience & Content	Quality & Updates
L8	<p>Plymouth HAZ - Plymouth Health Action Zone</p> <p>AND</p> <p>Connexions Cornwall & Devon (Plymouth Area)</p> <p>Plymouth Health Action Zone The Public Dispensary 18 Catherine Street Plymouth, PL1 2AD Tel: 01752 515470 Fax: 01752 515481 Web: www.phaz.org.uk</p>	<p><i>Plymouth Pathway to Transition</i></p> <p>Transitions for young people with learning disabilities.</p>	Families and professionals.	48 page guide, covering all aspect of the transition process (including a Personal Action Plan). Available on the web.
L9	<p>SEN (Eastern Region)</p> <p>Lynda Ingham Education and Library Services Southend Borough Council Civic Centre Victoria Avenue Southend on Sea, SS2 6ER Email: lyndaingham@Southend.gov.uk</p>	<p><i>Leaving School</i></p> <p>Opportunities for young people in the East of England. A directory of transition services for young people with special educational needs.</p>	Parents and carers.	Directory written for parents and carers primarily. Provides information to make the transition to adult life smooth, trouble-free as possible and as exciting as it should be. In two parts - booklet giving information about services and a local directory.

Local Information for Young People, Families & Professionals

General – Covering most aspects of Transition

Ref	Organisation & Contact Details	Title	Target Audience & Content	Quality & Updates
L10	<p>Shaftesbury Society Christian Care in Action in association with ASK - Wiltshire's Children's Information Service</p> <p>Shaftesbury Christian Care in Action 16 Kingston Road London, SW19 1JZ Tel: 020 8239 555 Fax: 020 8239 5580 Web: www.no-limits.org.uk</p> <p>OR</p> <p>Shaftesbury Transition Project Burton Hill House School Malmesbury Wiltshire, SN16 0EG Tel: 01666 826709 Email: pvigneswaren@shaftesburysoc.org.uk</p>	<p><i>No Limits</i></p> <p>Transition Information Pack.</p>	<p>Young people with a disability and/or a special need aged 14 - 9+.</p>	<p>A folder with leaflets on specific topics. A chart indicates which leaflets you need to look at for specific information. Also gives some national information.</p>

Local Information for Young People, Families & Professionals

General – Covering most aspects of Transition

Ref	Organisation & Contact Details	Title	Target Audience & Content	Quality & Updates
L11	<p>Surrey Children’s Service</p> <p>Partnership with Parents Furzefield Primary School Delabole Road Merthsham Surrey, RH1 3PA Tel: 01737 737300</p>	<p><i>Options for the Future</i></p> <p>A what, when and how guide for parents as young disabled people make the transition to adult life.</p>	Parents and carers.	<p>129 page guide for parents of young disabled people. Very comprehensive guide. Also available on the web. www.pwpsurrey.org</p> <p>Children’s version ‘Your book for the future’ listed under ‘Partnership with Parents’.</p>
L12	<p>Swindon Borough Council</p> <p>Child Health Team, Swindon Housing and Social Services, Wat Tyler House, Euclid Street, Swindon, SN1 2JH Tel: 01793 463 000 Web: www.swindon.gov.uk</p>	<p><i>Transition for children and young people with disabilities</i></p> <p>A guide for parents and carers.</p> <p><i>Thinking about your future</i></p> <p>A booklet about transition for young disabled people.</p>	Families of children and young people with disabilities aged 14-19.	<p>119 page report explaining transition process and what to expect at each stage, including choices. Details of local and national organisations and services. Also 40 page booklet for young disabled people to help them think about their future.</p>

Local Information for Young People, Families & Professionals

Choices – Education & Employment

Ref	Organisation & Contact Details	Title	Target Audience & Content	Quality & Updates
L13	<p>Connexions (Cornwall and Devon)</p> <p>Connexions Partnership Office Tamar Business Park Pennygillam Industrial Estate Launceston, PL15 7ED Tel: 01566 777672 Fax: 01566 777713 Freephone: 0800 9755111 (except mobiles) Email: partnership@connexions-cd.org.uk Web: www.connexions-cd.org.uk</p>	<p><i>What's Next?</i></p> <p>A parents' guide to life after school for young people with additional learning needs.</p>	Parents and carers.	This booklet aims to provide an overview of education, training and employment provision for young people with additional learning needs with some detail of the local area.
L14	<p>Connexions (West Midlands)</p> <p>Connexions Dudley and Wolverhampton Castlemill Burnt Tree Tipton West Midlands, DY4 7UF Tel: 0121 521 2300 Web: www.connexions.gov.uk</p>	<i>2003 Forward</i>	Parents, carers and professionals.	Information about the transition process and options for parents and carers and professionals.

Local Information for Young People, Families & Professionals

Changes - Health

Ref	Organisation & Contact Details	Title	Target Audience & Content	Quality & Updates
L15	<p>Forth Valley Primary Care NHS Trust</p> <p>Downloadable from: www.show.scot.nhs.uk/nhsfv/services/smoothtransition.htm</p>	<p><i>Help for Health</i></p>	<p>Young people leaving school. Also useful for parents and carers.</p>	<p>Downloadable book produced for young people leaving school. Contains information about how to get help, support and advice about health matters. Gives local information for the Forth Valley area as well as national information. Includes specific advice for young people with learning disabilities. Produced as part of the 'Smoothing the Transition' project.</p>
L16	<p>Forth Valley Primary Care NHS Trust</p> <p>Area Community Child Health Department Stirling Royal Infirmary Livilands Stirling, FK8 2AU</p>	<p><i>Smoothing the Transition</i></p> <p>Guidelines - Smoothing the transition from child to adult health services for people with a learning disability in Forth Valley.</p>	<p>Professionals.</p>	<p>Guidelines that make recommendations for good practice for health care staff. Also useful for other professionals.</p>

Local Information for Young People, Families & Professionals

Service & Policy Development – Transition Planning

Ref	Organisation & Contact Details	Title	Target Audience & Content	Quality & Updates
L17	<p>ASK (Advice on Services for Kids)</p> <p>ASK Advice on Services for Kids Wyndhams St Joseph's Place Devizes, SN10 1DD Tel: 0345 585072 (UK only) Fax: 01390 722843 Email: askwiltshire@compuserve.com</p>	<p><i>Transition Information Pack</i></p> <p>For Young People with a Disability and/or a Special Need aged 14-19 years.</p>	<p>Information pack for school leavers with disabilities aged 14-19.</p>	<p>Aim of pack is to give a starting point for gathering information and making plans.</p>
L18	<p>SEN Regional Partnership (South West)</p> <p>AND</p> <p>Sense</p> <p>AND</p> <p>Connexions (Gloucestershire)</p> <p>SEN Regional Partnership (SW) Bishops Hill House Bishops Hull Taunton, TA1 5EP Tel: 01823 335491 Fax: 01823 323388 Web: www.sw-special.co.uk</p>	<p><i>Transition Planning 13 to 19</i></p> <p>Guidelines to assist teamwork with young people who have complex disabilities.</p> <p>Extensive document, clearly produced. Encourages schools to be involved in order to meet the Code of Practice requirements that Transition Planning must include.</p>	<p>Professionals working with young people with complex disabilities between the ages of 13 and 19.</p>	<p>Pack that can be downloaded from website or obtained on floppy disk by post. Includes guidelines to assist teamwork with young people who have complex disabilities. Guidance is specific to different professionals, young people, parents and friends. Information is not specific to the South West region. Links are proposed with 'Transactive'.</p>

Local Information for Young People, Families & Professionals

Service & Policy Development – Transition Planning

Ref	Organisation & Contact Details	Title	Target Audience & Content	Quality & Updates
L19	<p>SEN Regional Partnership (South West)</p> <p>SEN Regional Partnership (SW) Bishops Hill House Bishops Hull Taunton, TA1 5EP Web: www.sw-special.co.uk</p>	<p><i>A short guide to Transition Planning for Schools</i></p>	Professionals in schools.	Downloadable guide to transition planning for schools. Points to other relevant resources and links to a Transition Plan that can be customised for local use.
L20	<p>Surrey County Council Social Services</p> <p>Surrey Careers Services Ltd Head Office Farncombe Place 10 Farncombe Street Farncombe Godalming, GU7 3HE Tel: 01483 860668 Fax: 01483 414980</p>	<p><i>Information for parents/carers on the Transition Process</i></p> <p>Helping you and your child prepared for the future.</p>	Parents and Carers.	Leaflet explains the transitional planning process and provides a checklist.

Local Information for Young People, Families & Professionals

Service & Policy Development – Transition Planning

Ref	Organisation & Contact Details	Title	Target Audience & Content	Quality & Updates
L21	<p>Surrey County Council Social Services</p> <p>Surrey Careers Services Ltd Head Office Farncombe Place 10 Farncombe Street Farncombe Godalming, GU7 3HE Tel: 01483 860668 Fax: 01483 414980 Web: www.surreycc.gov.uk/transition</p>	<p><i>Procedure for the Transition of Children with Disabilities from Children's Services to Community Care Services</i></p>	<p>Professionals.</p>	<p>Procedures for professionals re transition of children with disabilities.</p>
L22	<p>Connexions (West Midlands)</p> <p>Connexions Dudley and Wolverhampton Castlemill Burnt Tree Tipton West Midlands, DY4 7UF Tel: 0121 521 2300 Web: www.connexions.gov.uk</p>	<p><i>2003 Forward</i></p>	<p>Parents, carers and professionals.</p>	<p>Information about the transition process and options for parents and carers and professionals.</p>

National Information for Professionals & Partnership Boards

Services & Policy Development - Support

Ref	Organisation & Contact Details	Title	Target Audience & Content	Quality & Updates
L23	<p>Surrey Users Network</p> <p>Surrey Users Network Astolat, Coniers Way New Inn Lane Burpham, Guildford Surrey, GU4 6HL Tel/minicom: 01483 456558 or 456559 Fax: 01483 456561 Email: sun@sun.org.uk</p>	<p><i>Communication Choice and Control</i></p>	<p>Parents, carers and professionals.</p>	<p>Information booklet about project which will make diaries for young people with disabilities in Surrey aged 16-19. Help to make young people communicate, help others understand their needs and organise their days.</p>

Services & Policy Development – Transition Planning – Multi-agency Services

Ref	Organisation & Contact Details	Title	Target Audience & Content	Quality & Updates
L24	<p>Fusion-4 (Nottinghamshire County Council, Mansfield District Council, A Place to Call Our Own and Invest to Save Budget)</p> <p>Web: www.fusion-4.org.uk</p>	<p><i>Transition Services for Young Adults</i></p>	<p>Information, presented in a multi-agency context on transition services.</p>	<p>Website.</p>

National Information for Professionals & Partnership Boards

Services & Policy Development – Transition Planning – Multi-agency Working

Ref	Organisation & Contact Details	Title	Target Audience & Content	Quality & Updates
L25	<p>Learning Partnership West, The SW co-ordination project, SENSE</p> <p>Web: www.sw-special.co.uk/Resources/GUIDAN.pdf</p>	<p><i>Transition planning 13 to 19</i></p> <p>Guidelines to assist team work with young people who have complex disabilities.</p>	<p>Young people with complex disabilities, their families, schools, statutory agencies, careers professionals and voluntary agencies.</p>	<p>Pack includes guidance for all parties involved with transition planning.</p>

Projects

Ref	Project Name	Details
P1	Aasha project - Skill organisation, funded by Diana memorial fund	Action research project to look at young people with learning difficulties from South Asian backgrounds' involvement in post-school education and training. Skill. Web: www.skill.org.uk
P2	ACE - Open your mind not your mouth	ACE has trained nearly 50 people to give anti-bullying presentations to schools. Have produced a leaflet 'Bullying hurts! Let's stop it now'. Includes information about learning disability. Email: lena.gillies@enable.org.uk
P3	Children's Society - PACT / Transition Project	Advocacy for YP with complex communication needs, connecting them with a 'Natural Ally'. Developed in multi-cultural context. 'Natural Allies' Project. Lucy Saunders, Project Manager Tel: 01904 639056 Email: py@childsoc.org.uk
P4	Citizenship in practice Children in Scotland	Website and report entitled 'What matters to me'. Also CD Rom and rap. Web: www.childreninscotland.org.uk
P5	Community, Choice and Control - Surrey SS and Surrey Users Network	See Local Information for Young People, Families & Professionals - Ref: L11, L20 and L23. See National Websites - Ref: W8.
P6	Count Us In - Foundation for People with Learning Difficulties	Includes 4 projects. 1. Self-defined service models for young people with learning disabilities and mental health needs from ethnic minorities. 2. 'What's happening?' how young people with learning disabilities and their parents/carers understand anxiety and depression. 3. What leads carers to identify changes in emotional and mental well-being in young people with profound and multiple learning disabilities and how do they respond? 4. Mind the Gap: research into meeting the mental health needs of young people with learning disabilities in Somerset working through the Connexions services. Web: www.fpld.org.uk

Ref	Project Name	Details
P7	CREDO east project - Circles Network	Set up in the East of England by the Circles network. Providing opportunities to empower young people by ensuring that they are always the focus person and in control of the planning process. Nadine Jay co-ordinates. Tel: 01733 551 2 Fax: 0870 137 658 Email: nadine@circles.free-online.co.uk
P8	Datalink	Offers training and work experience to young disabled people in Northern Ireland. Therese Kelly or Anne Kerr Datalink Reprographics Ltd. Grahamsbridge Road Dundonald, BT16 2HS Tel: 028 9048 6557
P9	Employability Plus Programme - Who Cares? Trust	A Further development of the Employability Programme, for care leavers with a learning disability. Aims to improve further education, training and employability prospects. Web: www.thewhocarestrust.org.uk
P10	Families Leading Planning	Person Centred Planning and transition. Pack published in February 2004. See National Information for Young People & Families - Ref: N15. Helen Sanderson and NDT.
P11	Foundation for People with Learning Disabilities	'Developing Connexions' project. Nic Rowland Crosby Web: www.fpld.org.uk
P12	Future Plans	Project that offers person centred planning to 15 young people with learning disabilities. Managed by Edinburgh Development Group. Steve Coulson Tel: 0131 622 0203 Email: steve@edg-sco.org
P13	'Getting a life'	Council for Disabled Children. Helen Wheatley. Raising awareness of young people's needs for families & providers - improving access to services, linking to national initiatives e.g. Connexions. Web: www.ncb.org.uk/cdc/

Ref	Project Name	Details
P14	The Health Log	Sense Scotland are piloting a 'health log' to help monitor the health needs of people with learning difficulties. Linda Long and Lisa Curtis (supported by Nuffield) Web: www.sense.org.uk/tsarticles/monitor.html
P15	Hertfordshire County Council	Have a lead officer and two transition development workers. Consult with parents/carers and young people, develop and agree systems. Web: www.hertsdirect.org
P16	Home Farm Trust and Luton Council	'Supporting better transitions for those with special educational needs'. July 2001 - March 2002. Developed a range of Parent Partnership initiatives to support parents at various points of transition. Piloted materials developed by Eastern England SEN project.
P17	Inter-agency transition group	Cheshire - wide group developed by Connexions Development manager Gill Alderson. Includes a longitudinal survey of young people and families' experiences of transition. Tel: 01606 305200 Email: gill.alderson@connexions-cw.co.uk
P18	Integrated transition project	A project that involves Social services, Education, Housing and Connexions in South Gloucestershire. Neil Miller Email: Ind.consni.miller@virgin.net
P19	Life Options Project	South Wales project for young people with severe disabilities, using person centred planning. Information service, articles, information sheets, Llais magazine and website, self-help 'Guide to Life Options'. Stebonheath Centre for Enterprise Stebonheath Terrace, Llanelli Wales, SA15 1NE Mark John-Williams Tel: 01554 746782/746806 Email: lifeoptions@scovo.org.uk
P20	Macintyre Care	Conducted research that tracked progress of young people with learning disabilities leaving school. Web: www.macintyre-care.org

Ref	Project Name	Details
P21	Making the Jump-transition to work project	Two year project looking at good practice relating to the transition to work. Web: www.niace.org.uk
P22	Mind the Gap	Project based at the Norah Fry Research Centre about young people with learning disabilities and mental health issues. Val Williams Email: val.williams@bris.ac.uk
P23	My Life after School	Jane Livingstone Web: www.arcuk.org.uk/projects
P24	Oxfordshire Integrated Assessment Project	2 year project to provide an integrated assessment (with SSD and carers, young person). Web: www.inclusive.co.uk/greenpap/transin.shtml
P25	Parent Partnership Network	Transition workshops for parents of young people with statements. Robina Mallet Carer Support Officer Home Farm Trust Merchant House Wapping Road Bristol, BS1 4RW Tel: 0117 930 2608 Web: www.parentpartnership.org.uk/Paper8.htm
P26	Plymouth Transition Pathway	Plymouth Social Services in conjunction with the Michael Batt Foundation. A HAZ Innovations initiative.
P27	Prader-Willi Syndrome Association	Three year Diana-funded project to look at transition for people with PWS. Kendra Mitchell Outreach and Development Worker The Prader-Willi Syndrome Association Tel: 01332 365676
P28	Skill Northern Ireland - Learning, Equality, Transition Project (L.E.T)	Northern Ireland project for school leavers with a learning disability wishing to go to FE.
P29	Somerset Connexions	Sally Hoadley. 4 Personal Assistants appointed to work mainly with people with learning disabilities. Web: www.connexions-somerset.org.uk

Ref	Project Name	Details
P30	Somerset Inclusion Project	Report and video (My Voice, My Choice). Val Williams. Available from Rhiannon Prys Owen Barnardo's Somerset Inclusion Project 34 Wellington Road, Taunton, TA1 5AW Tel: 01923 257917
P31	Sounds Good! Project	Advocacy and transition for young people with learning disabilities. Project is in developmental stage. Nigel Caldwell Tel: 01663 719662 Email: nigel@sgood1.fsnet.co.uk
P32	Speaking up!	A self-advocacy project for people with learning disabilities. 162 Tenison Road Cambridge, CB1 2DF Tel: 01223 566 258 Web: www.speakingup.org
P33	Trans-active project	See National Websites - Ref: W7. Web: www.trans-active.org.uk
P34	Transition for young adults from minority communities	An Association for Real Change (ARC) project to set up a website of information for young people at transition and their families. Diana funded so limited in scope at present. Pam Smith Email: pam.smith@arcuk.org.uk Web: www.arcuk.org.uk
P35	Transition Information Network	The network is made up of Action 19+ and NDT working together. Quarterly magazine 'My Future Choices'. Steve Easter. Website is in development and contains downloadable copy of the magazine 'My future choices'. Web: www.myfuturechoices.org.uk
P36	Transition Pathway Project	Chris Scholl. Piloting 'Big Picture Guide' in West Midlands. Final version will be available Autumn 2004.

Ref	Project Name	Details
P37	The RITE Project - Realising Independence Through Education.	Collaboration between DARE and ACE. Young people with complex physical and connection needs in Further Education. Tamsin MacDonald RITE Project Co-ordinator. Tel: 01273 691 911 Email: tamsinmacdonald@darefoundation.org Web: www.ritesite.org.uk
P38	Whatever Next? : Young disabled people leaving care	Mark Priestly, Parvaneh Rabiee and Julie Knowles. Leeds University. www.leeds.ac.uk/disability-studies/projects/firstkey Includes section on improving practice around transition and young disabled people leaving care.
P39	YouthNet	2 year project in Newcastle, funded by the Neighbourhood Renewal Fund. Jan Cole and Louise Taylor Web: www.connexions-tw.co.uk