



social care
institute for excellence

Accelerating Reform Fund

The Core Principles of Co-production

20th May 2024

The ARF Team at SCIE



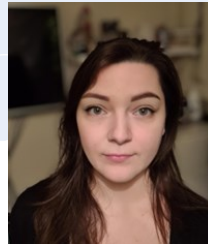
Chris Dadson
Director of Business
Development



Carmen Colomina
Programme Manager



Laura Banks
Head of Innovation



Paris Matthews
Programme Co-ordinator

Delivery Team

- Ikran Ahmed
- Nigel Tungwarara
- Lauren Westerman
- Paula Thompson- Butler
- **Experts by Experience**

Kevin Minier
Jo Barnicoat
Sandra Bilsborrow
Stephen Elsmere

Why value co-
production?

The core principles of
co-production

Resources for
supporting co-
production within ARF
projects

“Co-production” is when an individual influences the support and services received, or when groups of people get together to influence the way that services are designed, commissioned and delivered.



The Spectrum of Participation

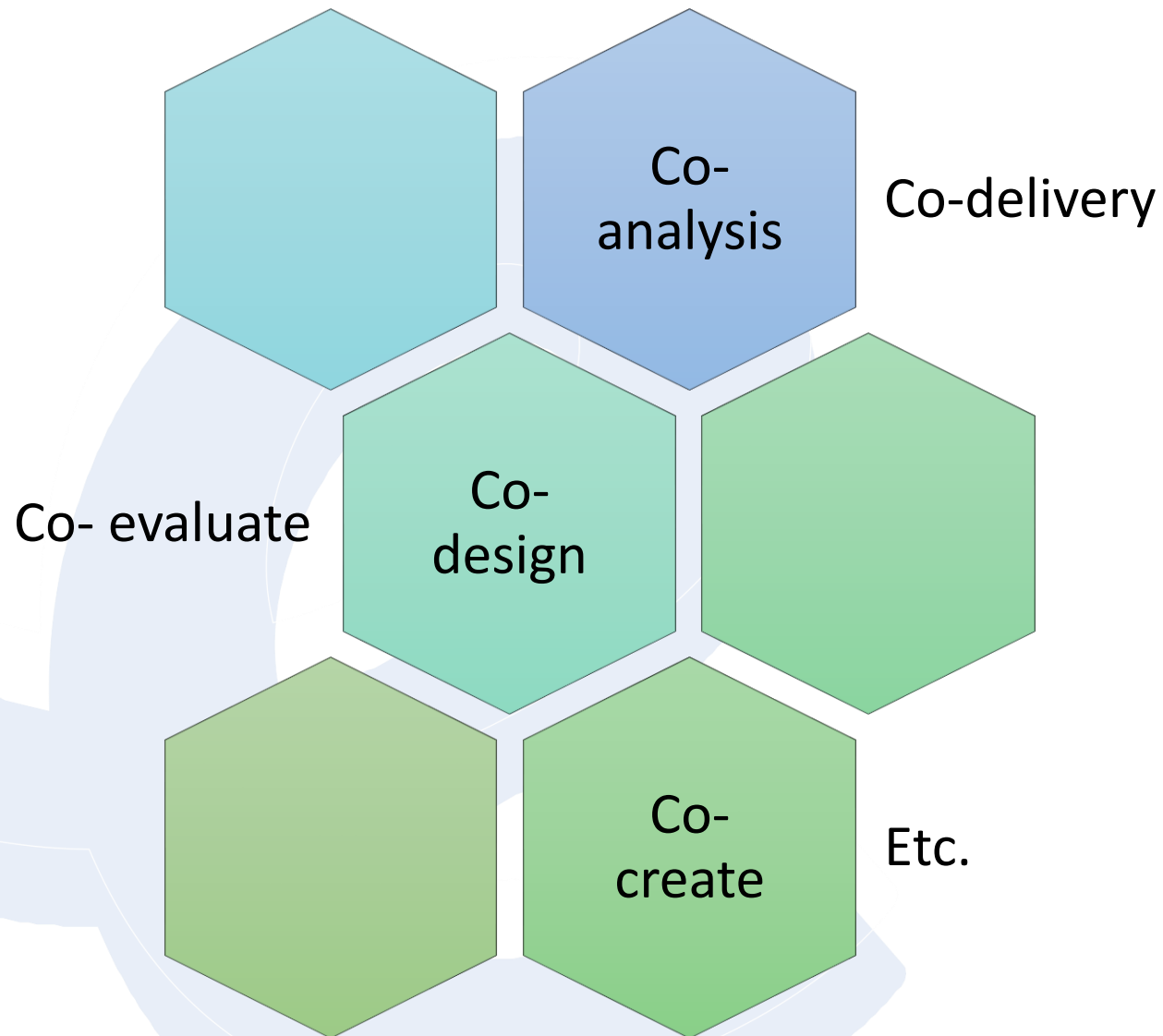


What is Co-production?

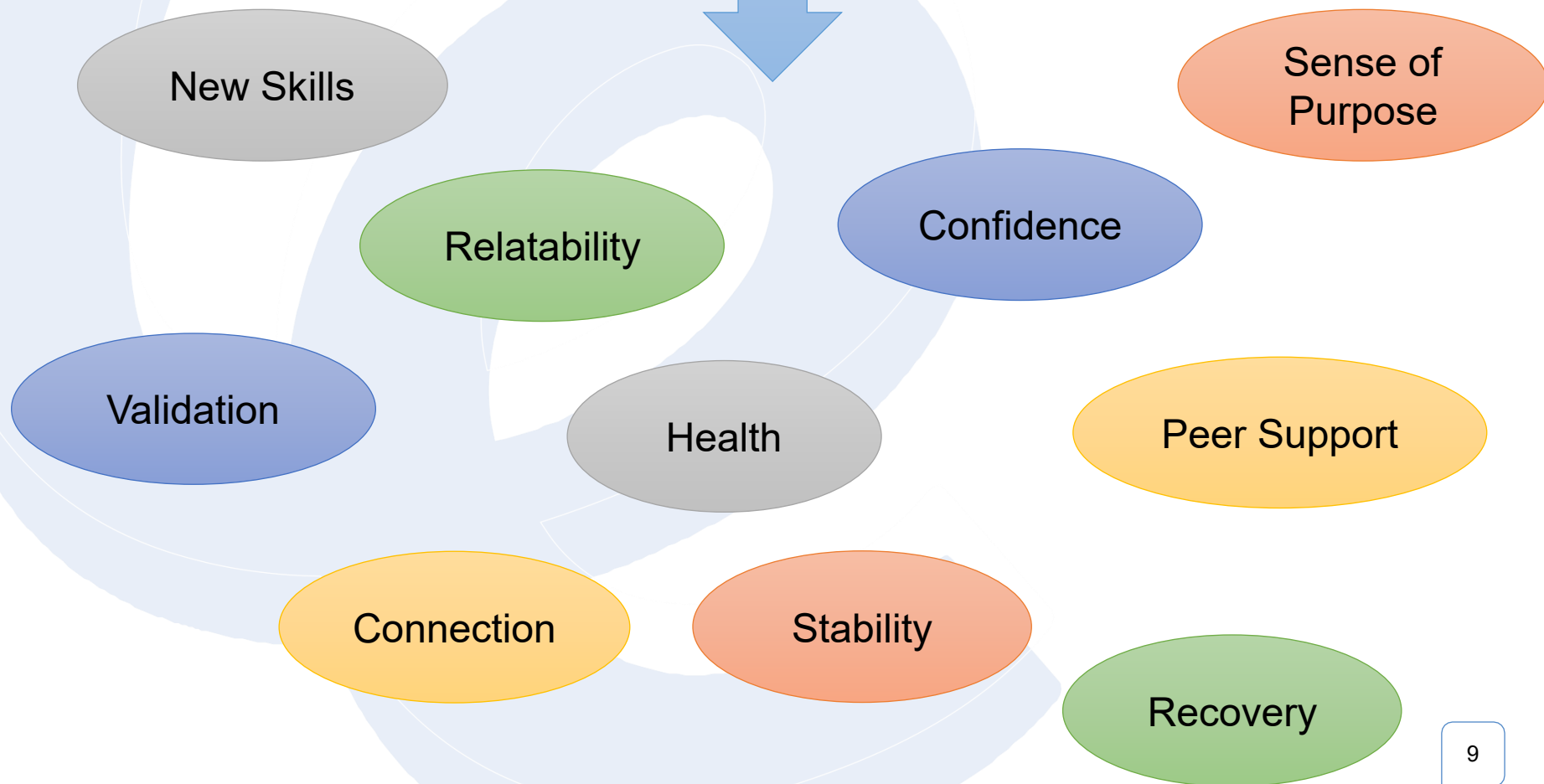


Co-production – Why?





10 Reasons why **Co-production** can benefit **Mental Health and Wellbeing**



It is against the law to discriminate against someone because of a protected characteristic. The nine [protected characteristics](#) are:

- [age](#)
- [disability](#)
- [gender reassignment](#)
- [marriage and civil partnership](#)
- [pregnancy and maternity](#)
- [race](#)
- [religion or belief](#)
- [sex](#)
- [sexual orientation](#)

You are protected under the [Equality Act 2010](#) from these types of discrimination.

Many recognise that family/informal (unpaid) carers experience poorer health and wellbeing outcomes (an underserved community) and there is a call to make being a carer as the 10th protected characteristic.

Accessibility

Diversity

Equality/Equity

Power sharing

**Shared decision
making**

**Reciprocity, or getting
something back for
putting something in**

Safe/Brave Space

- **Confidentiality** – any personal disclosures will stay in the room.
- **Respect** – we will have different experiences of co-production. We will respect difference and use respectful language.
- **Participation** – we want everyone to contribute as fully as possible.
- **Questions** – all questions are welcome.
- **Follow up** – contact Co-production staff at SCIE.

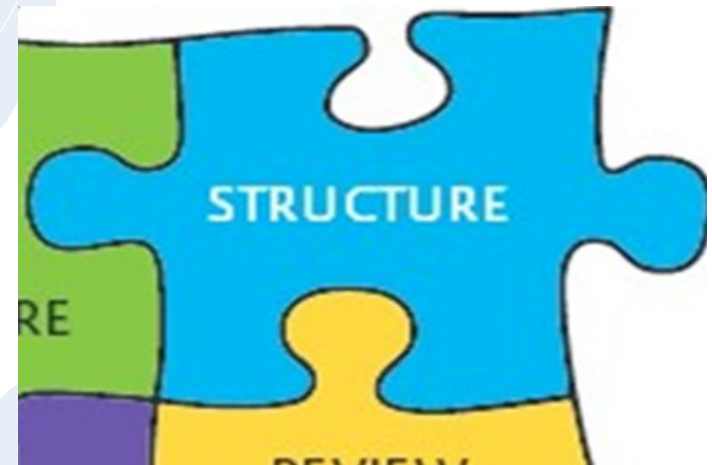
The Jigsaw model for the management of change...



- Ensure that co-production runs through the culture of an organisation.
- Ensure that this culture is built on a shared understanding of what co-production is, a set of principles for putting the approach into action and the benefits and outcomes that will be achieved with the approach.
- Ensure that organisations develop a culture of being risk-aware rather than risk-averse.



- Involve everyone who will be taking part in co-production from the start.
- Value and reward people who take part in the co-production process.
- Ensure that there are resources to cover the cost of co-production activities.
- Ensure that co-production is supported by a strategy that describes how things are going to be communicated.
- Build on existing structures and resources.



Practice 1/2

- Ensure that everything in the co-production process is accessible to everyone taking part and nobody is excluded.
- Ensure that everyone involved has enough information to take part in co-production and decision making.
- Ensure that everyone involved is trained in the principles and values of co-production and is supported in developing any new skills they will need for the work they do.



Practice 2/2

- Ensure that frontline staff are given the opportunity to work using co-production approaches, with time, resources and flexibility.
- Provide any support that is necessary to make sure that the community involved has the capacity to be part of the co-production process.
- Ensure that policies and procedures promote the commissioning of services that use co-production approaches.
- Ensure that there are policies for co-production in the actual process of commissioning.



- Conduct regular reviews to ensure that co-production is making a real difference and that the process is following the agreed principles.
- Co-produce reviews and evaluations.
- Use the review findings to improve ways of applying the principles of co-production, so that continuous learning is taking place.
- During reviews and evaluations, work with people who draw on care and support and carers, to think about ways of showing the impact that co-production has, as well as the processes that are involved.



Things to remember:

- Consider coproduction from the start
- Work out what you have the time and budget to do
- Be clear in your communication
- Allow plenty of time and if you can't, explain why
- Check if people need any additional support
- How you will ensure that everybody's time is valued (reciprocity)?

What you need to think about?

What are the key stages of the work and how will co-production fit in with this?

What would the options be if everything cannot be done perfectly?

What are the possible obstacles to co-production taking place?

How much time will co-production need?

What are the costs?

Next steps from coproduction

Hands on support
innovation@scie.org.uk

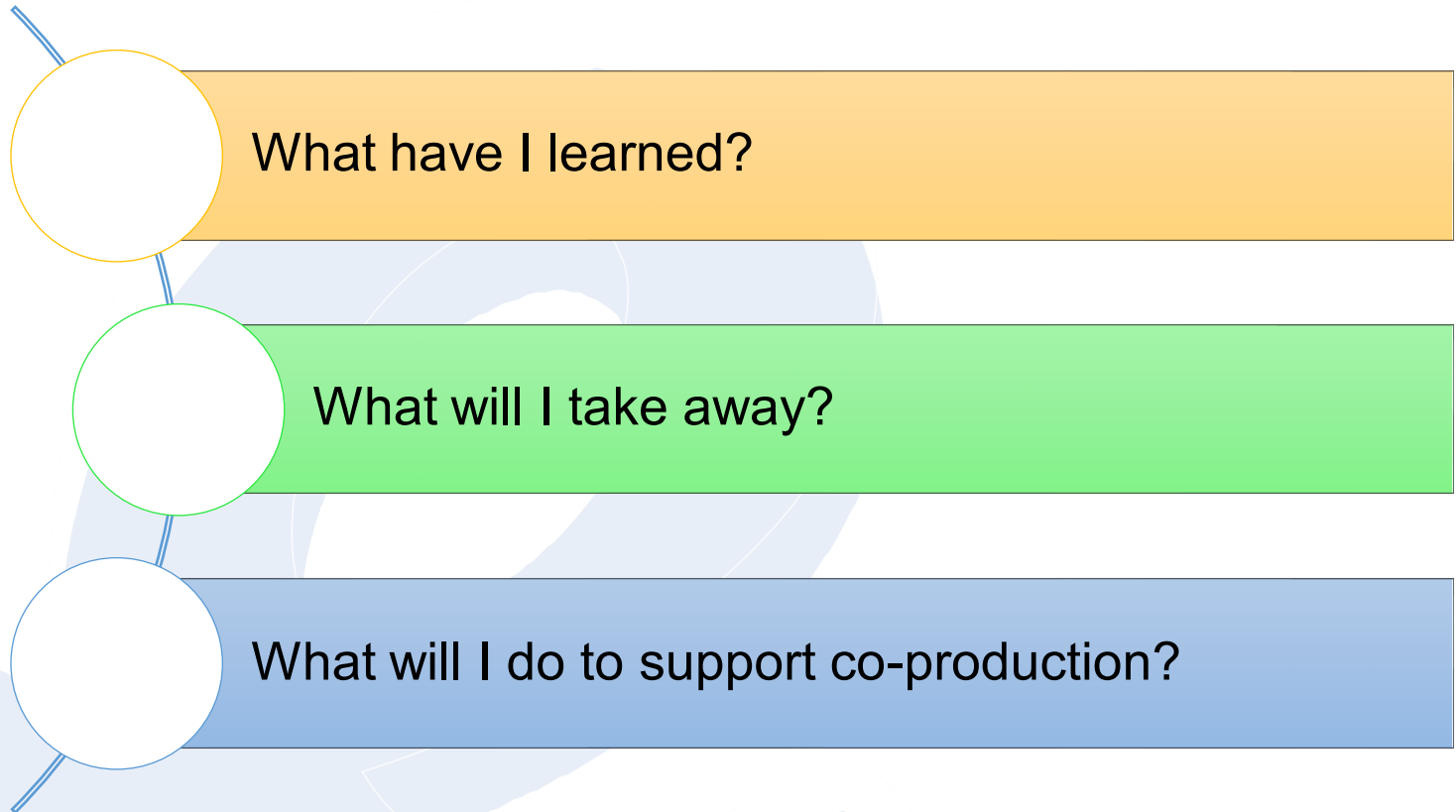
Practice sessions: 45
mins

- 29th, 30th May
- 4th June



Any Questions

Closing Round:



- SCIE Website Resources

<https://www.scie.org.uk/co-production>

- Film: what makes co-production different from participation? (2.44 minutes)

https://www.youtube.com/watch?v=iJjmFYSB_qo

- Blogs: Examples of coproduction

<http://coproductionweek.blogspot.co.uk/>

- Film: Co-production in action (6.25 minutes)

<https://www.youtube.com/watch?v=h-02SwtelBc>

- Film: Thinking Outside the Tickbox (5.40 minutes)

<https://www.youtube.com/watch?v=5-QkD-D36PU>

Thank You