



social care  
institute for excellence

# Exploring and understanding Coproduction

How to effectively involve a broad representation  
of carers and adults

Accelerated Reform Fund (ARF)  
online learning workshop - July 2024

Before we start...

## Introductory video to the ARF

### Accelerating Reform Fund programme - SCIE

scie

social care  
institute for excellence

LoginRegister

Care themesTrainingWhat we offerSafeguardingSupport usAbout SCIE

Home / Innovation / Accelerating Reform Fund programme

## Accelerating Reform Fund

The Department for Health and Social Care (DHSC) has launched a £42.6 million Accelerating Reform Fund (ARF) to boost the quality and accessibility of adult social care by supporting innovation and scaling, and kickstarting a change in services to support unpaid carers.


Last updated: 24 April 2024

About the fundOur involvementWhat's nextNewsFAQsContact

### About the fund

The Accelerating Reform Fund (ARF) focuses on embedding and scaling approaches to transform care and support including for unpaid carers, who play such a vital, selfless role in our society. This will accelerate progress towards the government's social care vision where people have choice, control and support to live independent lives, and where care and support is of outstanding quality and is provided in a fair, accessible way.

Local authorities have registered their interest with the DHSC, in partnership with others, in their integrated care systems, to fund local innovation projects. They are expected to work collaboratively with others such as the NHS, care providers, voluntary and community sector groups, including unpaid carers. The ARF is supporting at least two projects per region, one of which will focus on unpaid carers, and consider co-production with both care recipients and unpaid carers, ensuring they are inclusive of local diverse needs.



## Language

<https://www.youtube.com/watch?v=bitGNuvZkWA&t=9s>

The video is 1:35 mins Shall we include it? It is a bit of fun, however, it is not very respectful to our professionals?

My suggestion, Carmen, will be to remove next slide and play the video?

# The ARF Team at SCIE



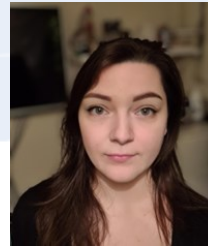
**Chris Dadson**  
Director of Business  
Development



**Carmen Colomina**  
Programme Manager



**Laura Banks**  
Head of Innovation



**Paris Matthews**  
Programme Co-ordinator

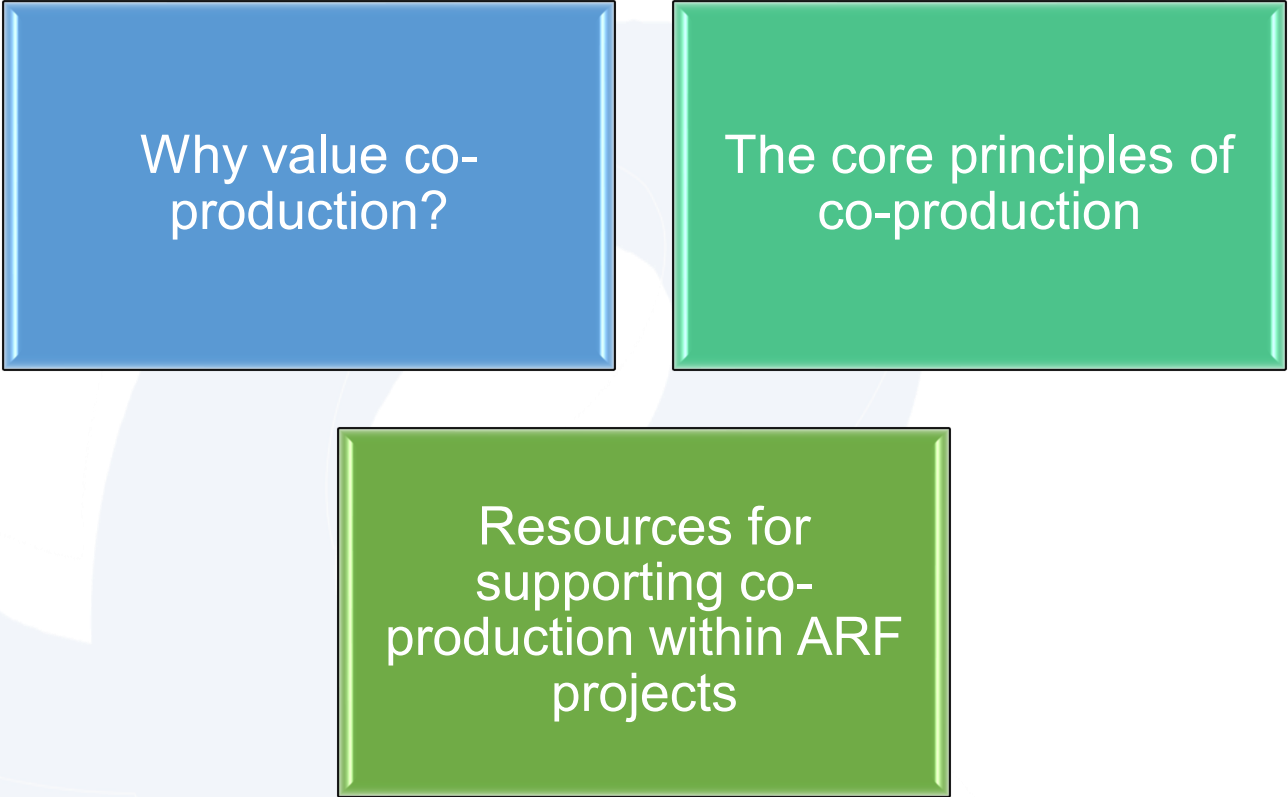
## **Delivery Team**

- Ikran Ahmed
- Nigel Tungwarara
- Lauren Westerman
- Paula Thompson-Butler
- **Experts by Experience**

**Kevin Minier**  
**Jo Barnicoat**  
**Stephen Elsmere**

*“Co-production” is when an individual influences the support and services received, or when groups of people get together to influence the way that services are designed, commissioned and delivered.*





Why value co-production?

The core principles of co-production

Resources for supporting co-production within ARF projects



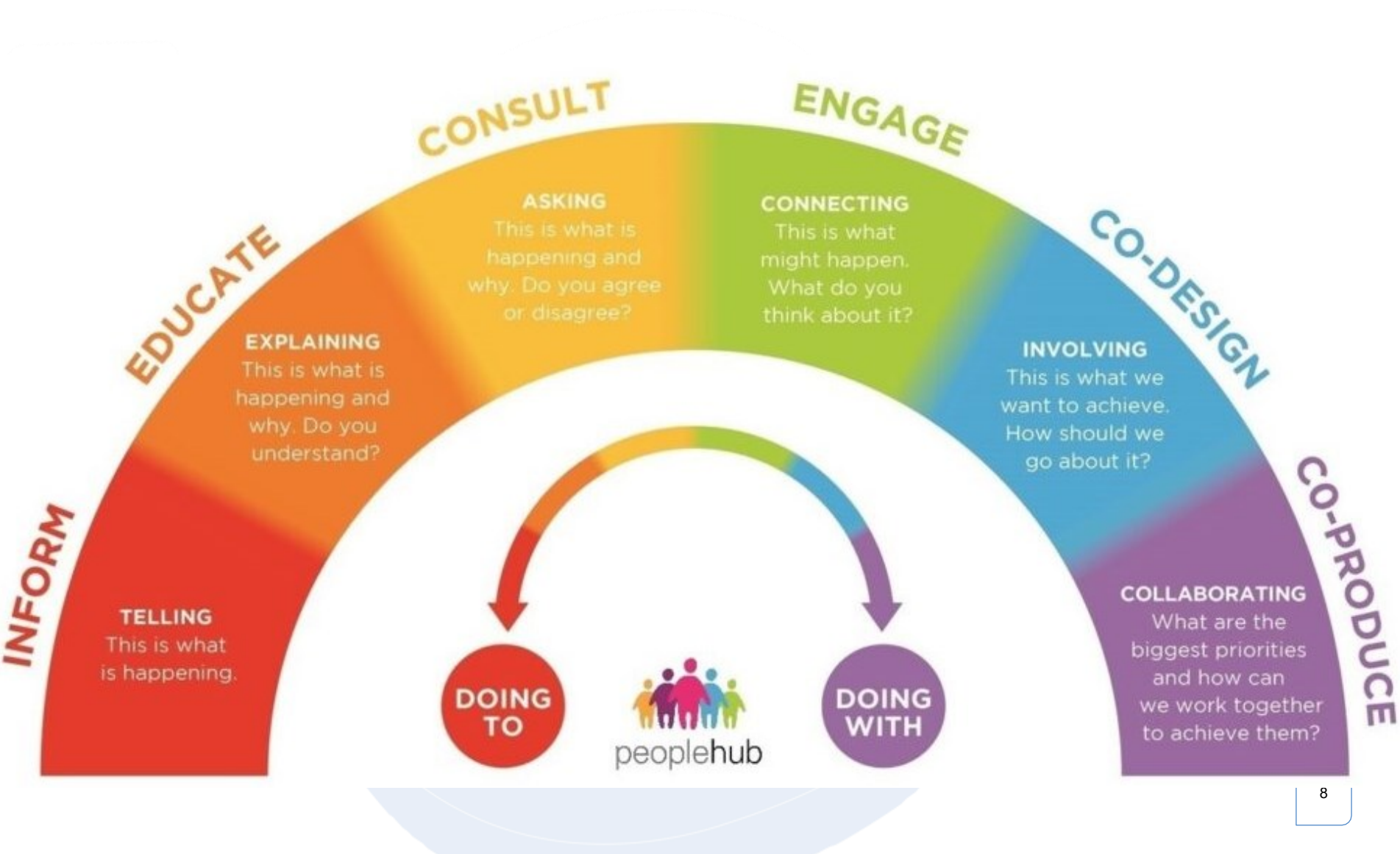
social care  
institute for excellence

# How to effectively involve a broad representation of carers and adults





# The Spectrum of Participation





# What is Co-production?



It is against the law to discriminate against someone because of a protected characteristic. The nine [protected characteristics](#) are:

- [age](#)
- [disability](#)
- [gender reassignment](#)
- [marriage and civil partnership](#)
- [pregnancy and maternity](#)
- [race](#)
- [religion or belief](#)
- [sex](#)
- [sexual orientation](#)

You are protected under the [Equality Act 2010](#) from these types of discrimination.

Many recognise that family/informal (unpaid) carers experience poorer health and wellbeing outcomes (an underserved community) and there is a call to make being a carer as the 10<sup>th</sup> protected characteristic.

# Breakout Groups

Do you need a broad representation of carers and adults within co-production?

- Are we including young carers?
- Who else needs to be in the Co-production Team?
- Are there specific communities that you must include in your project?

How will you 'recruit' them?

- What prevents people who 'draw' on services and carers from being involved?



20 Mins

# The Jigsaw model for the management of change...



# Key things to consider

Gather the right  
people for the job

Get started and  
build momentum

Spend time  
agreeing structure  
and value of the  
meetings

Support every  
member to  
contribute to their  
full potential

Tackle challenges in  
small steps

Listen, listen and  
listen

Back up decisions  
with evidence

Beware of the  
comfort zone, don't  
slip back into 'old  
ways'

Look to the bigger  
picture

Cherish what you  
create –  
coproduction comes  
from the heart

Support education  
through  
mentorship

## Key things to consider

Buy-in at all levels  
of management

Training/understan  
ding of what co-  
production is

Regular feedback

Early involvement  
of the end-user

A Project Steering Group of professionals and lay members.

Clear  
understanding of all  
the roles and  
responsibilities

Co-Production must be part of the initial choice/analysis phase, the design phase, the development phase and the delivery phase.

Project Planning and Budgeting includes Co-  
Production requirements at each stage of  
the project.

Open and transparent documentation  
of discussions and their conclusions

## IM & IT

---

- Effective information management and Technology
- Project Planning, Timesheets/Expenses and communication systems that recognise and facilitate effective co-production

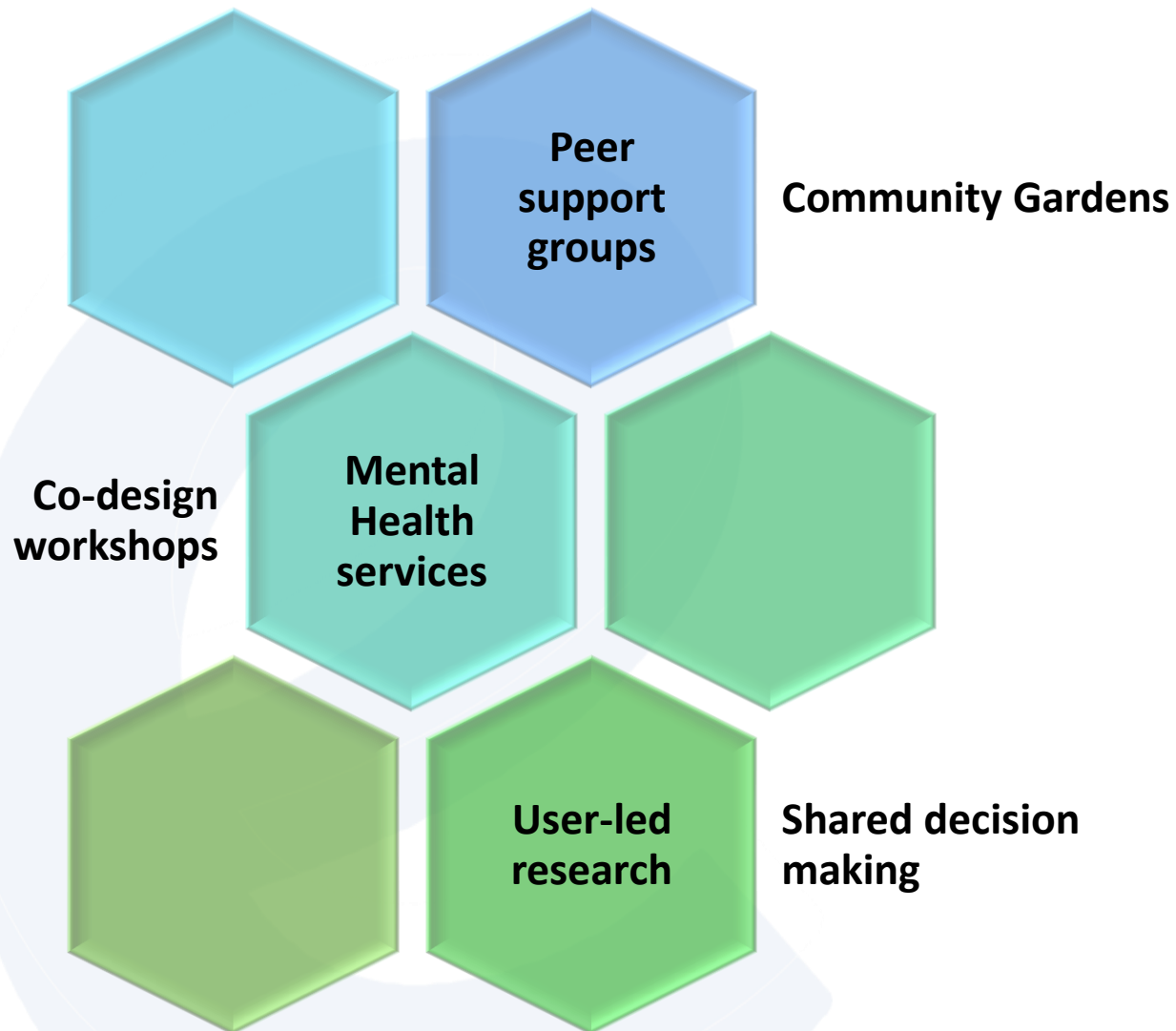
## Fees & Expenses

---

- Fee and Expenses policies for reciprocating lay members, experts by experience, patients, carers and members of the public.



Examples of similar initiatives who have dealt with this topic successfully, tools, guidance, etc.





social care  
institute for excellence

What support do people with lived  
experience need to be involved effectively?



# Breakout Groups

What is the  
'problem/opportunity' the  
programme/project is  
intended to address?

- Do the people with lived experience agree?

What training/support will  
you provide to your  
people with lived  
experience?

- Have you clarified the types of involvement, timeframe and time commitment for the lived experience contribution?



20 Mins

## Remember

**Sense of  
purpose**

**Health**

**Validation**

**Confidence**

Co-production is about valuing everyone's expertise and fostering meaningful partnerships. It's not just about consultation; it's about active involvement and shared ownership.

**Stability**

**Peer -  
support**

**New skills**

**Reliability**

**Connection**

**Recovery**



social care  
institute for excellence

# *Myth*

**BUSTER**

Co-production  
costs more!

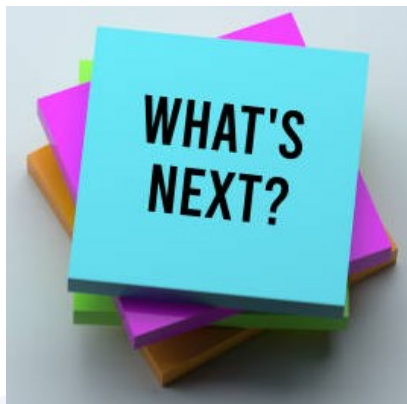
It is impossible to be  
representative.  
Some communities  
are not willing to  
engage.

One service user  
and one carer is  
sufficient.

Co-production is only  
suitable for large projects.

Involving people  
in Focus Groups  
is co-production.

Paying people for their  
involvement removes  
their independence and  
restricts their ability to  
challenge.



[innovation@scie.org.uk](mailto:innovation@scie.org.uk)

**SCIE** – We will send a survey to understand what has gone well and what we can do better

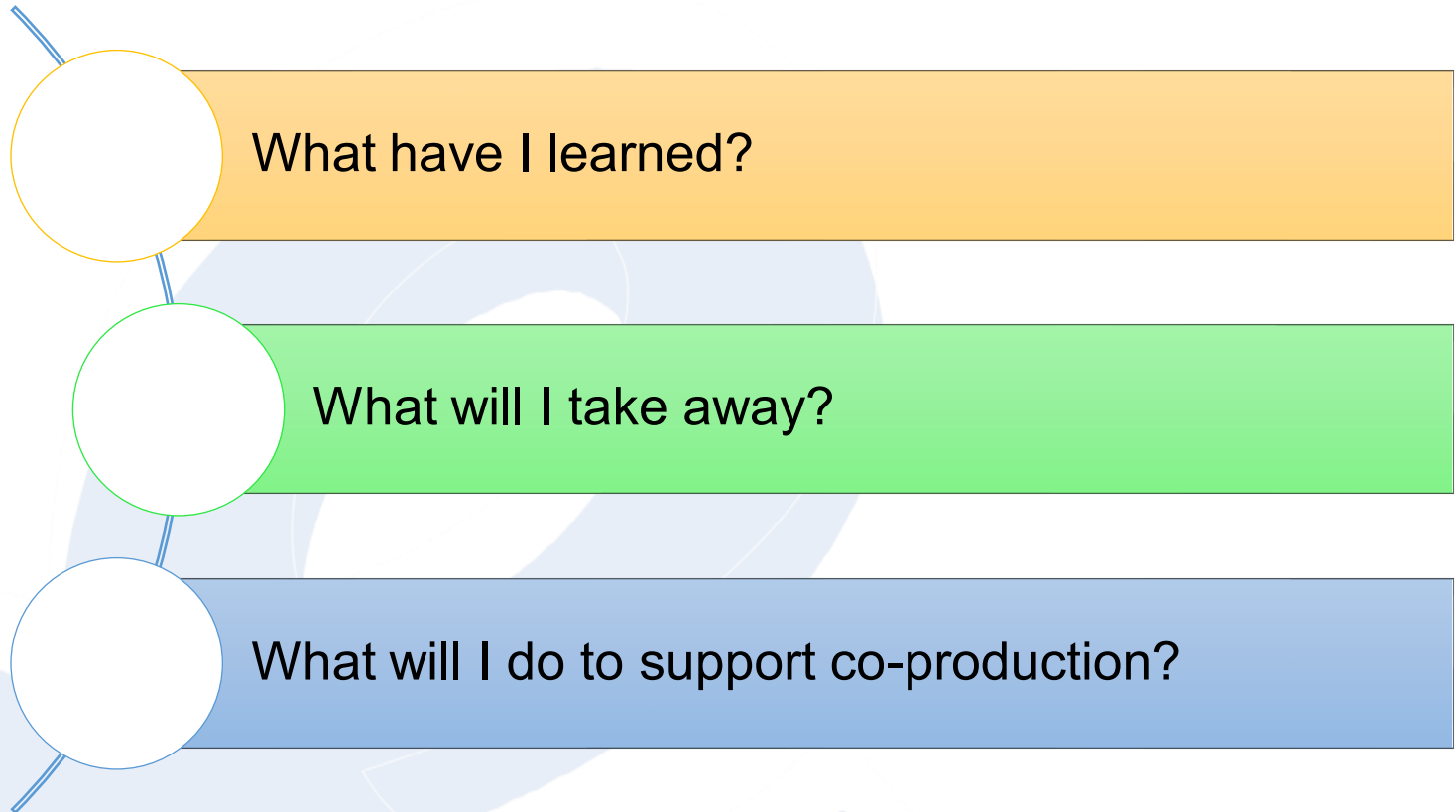
[arfevaluation@ipsosresearch.com](mailto:arfevaluation@ipsosresearch.com)

**Ipsos** - Ipsos will be conducting surveys and interviews with relevant stakeholders to evaluate the programme's processes and emerging impacts.

**The slides, key message and identified tools will be uploaded to SCIE's website**



# Closing Round:



- SCIE Website Resources

<https://www.scie.org.uk/co-production>

- Film: what makes co-production different from participation? (2.44 minutes)

[https://www.youtube.com/watch?v=iJjmFYSB\\_qo](https://www.youtube.com/watch?v=iJjmFYSB_qo)

- Blogs: Examples of coproduction

<http://coproductionweek.blogspot.co.uk/>

- Film: Co-production in action (6.25 minutes) <https://www.youtube.com/watch?v=h-02SwtelBc>

- Film: Thinking Outside the Tickbox (5.40 minutes)

<https://www.youtube.com/watch?v=5-QkD-D36PU>



social care  
institute for excellence

Thank you

For more information please visit

[www.scie.org.uk](http://www.scie.org.uk) (ARF) or email

[innovation@scie.org.uk](mailto:innovation@scie.org.uk)

[www.scie.org.uk](http://www.scie.org.uk)



YouTube