



Toolkit for local housing strategies

for autistic adults and adults with a learning disability

1) What is a strategy for housing?



A housing strategy tells us:

How many people need housing

What types of housing people like most and where



How many houses or flats are there now and how many more need to be built

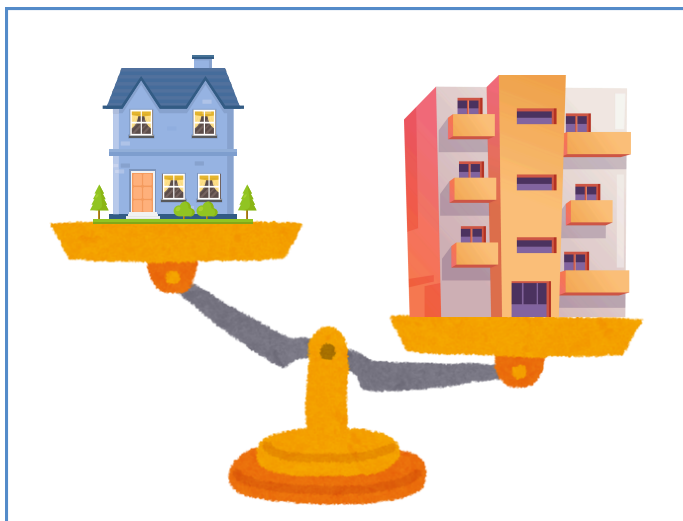
How much housing and care costs

How good housing can improve people's health and wellbeing

2) Why is a housing strategy important?

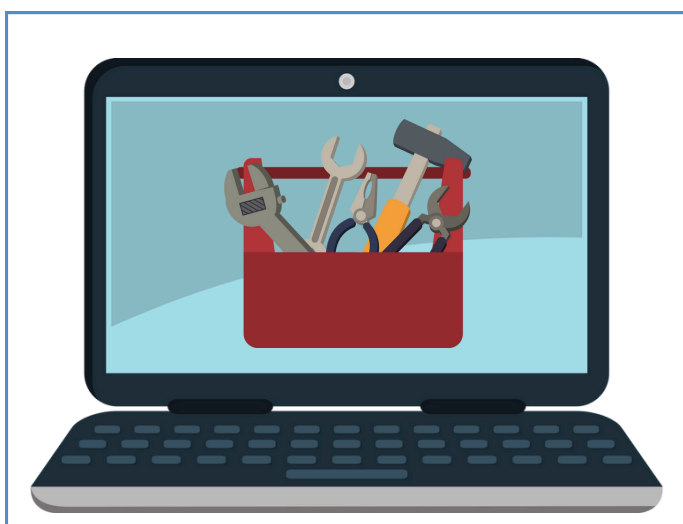


A housing strategy helps everyone in a local area to understand what housing is needed for autistic adults and adults with a learning disability.



A strategy includes what is important to autistic adults and adults with a learning disability.

3) What do we mean by toolkit?



Toolkit is a webpage with ideas on how to make a good plan for housing. People can use the 10 steps of the toolkit to build their plan.

4) What are the 10 steps?



First published in Great Britain in March 2025 by the Social Care Institute for Excellence

© SCIE All rights reserved

www.scie.org.uk

Updated in March 2025

Toolkit available at: <https://www.scie.org.uk/housing/toolkit-for-place-based-strategies-for-housing-for-autistic-adults-and-adults-with-a-learning-disability/>