



Step 3: What makes it easy or hard to build the right housing in my area?



This step is about why it can be easy or hard to find or build different types of housing for autistic adults and adults with a learning disability in the local area.



Does housing cost a lot?

Which organisations provide housing and support?

How are decisions made about which types of homes to build?

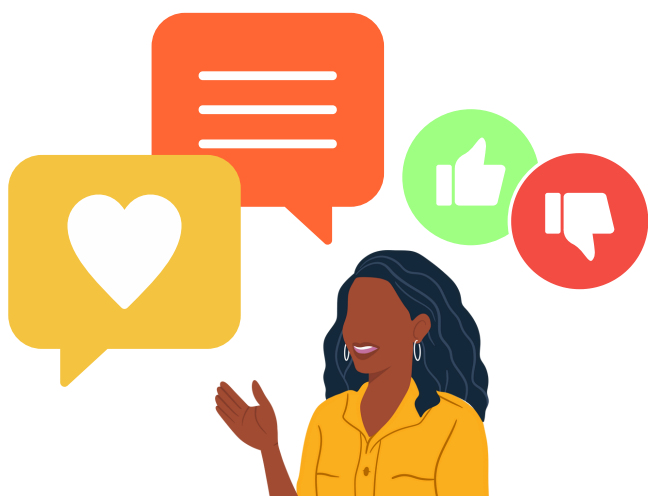
How can I contribute to this step? Some examples:



I say what my experience is of getting a home, and what makes that easy or hard.



I help decide what could make it easier or harder to build more housing in the future.



I share my experiences of local organisations that provide housing and support for autistic adults and adults with a learning disability.

First published in Great Britain in March 2025 by the Social Care Institute for Excellence

© SCIE All rights reserved

www.scie.org.uk

Updated in March 2025

Toolkit available at: <https://www.scie.org.uk/housing/toolkit-for-place-based-strategies-for-housing-for-autistic-adults-and-adults-with-a-learning-disability/>