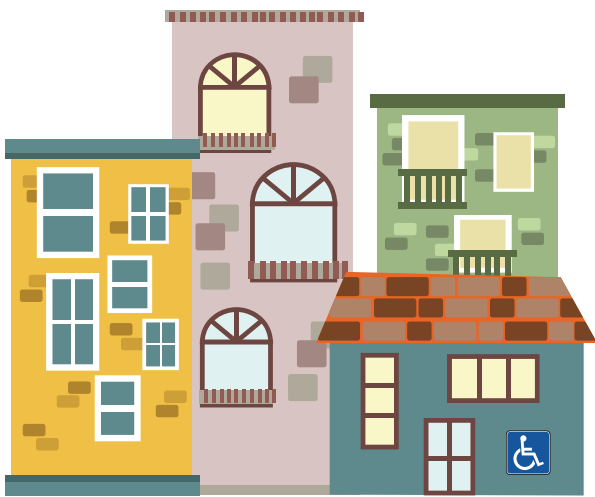




Toolkit for local housing strategies

for autistic adults and adults with a learning disability

Step 4: Identifying people's preferences and needs



The aim of this step is to understand what autistic adults and adults with a learning disability want and need from housing.

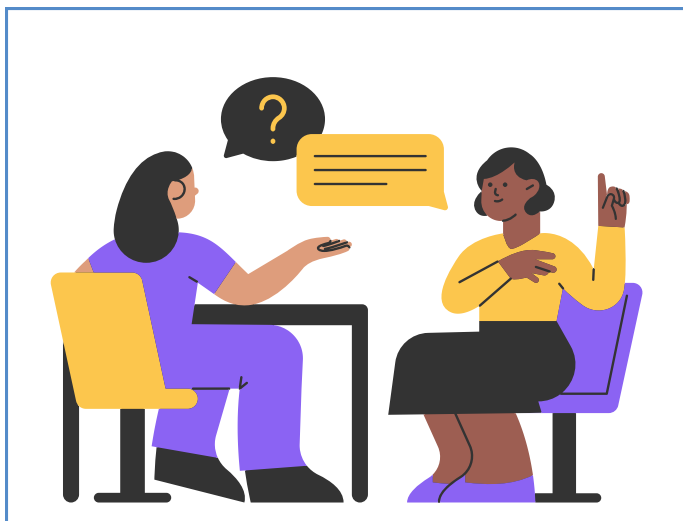


People will be asked about what they like and need. Each person is different so it is important that everyone can be included.

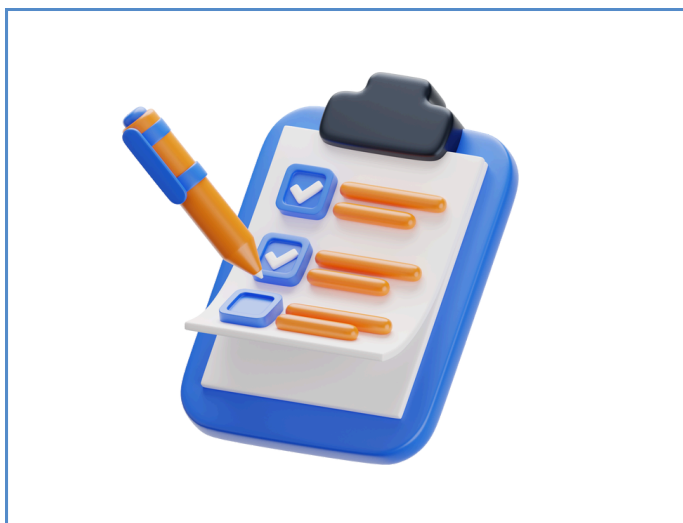
How can I contribute to this step? Some examples:



I help decide the research topic.



I help to word the questions so they are easy to understand.



I assist in choosing research activities that will support people to get involved.



I say what groups of people need to be included and how activities can be made inclusive and accessible.

First published in Great Britain in March 2025 by the Social Care Institute for Excellence

© SCIE All rights reserved

www.scie.org.uk

Updated in March 2025

Toolkit available at: <https://www.scie.org.uk/housing/toolkit-for-place-based-strategies-for-housing-for-autistic-adults-and-adults-with-a-learning-disability/>