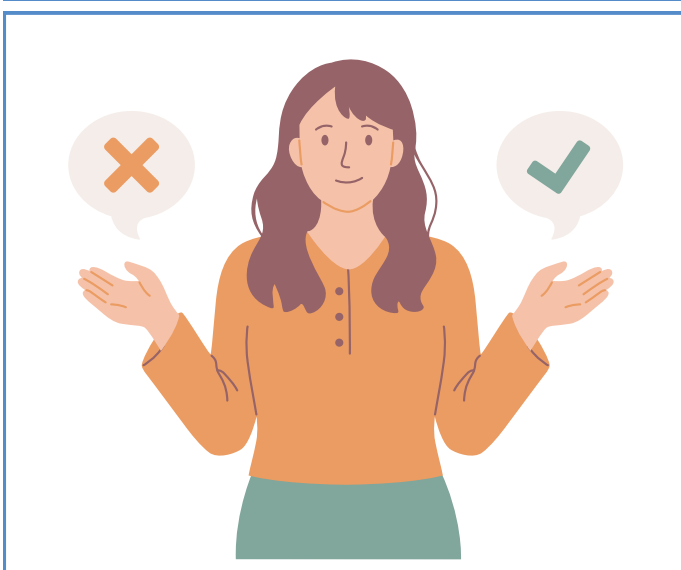




Step 5: How do the council and NHS work with and pay organisations that support people?

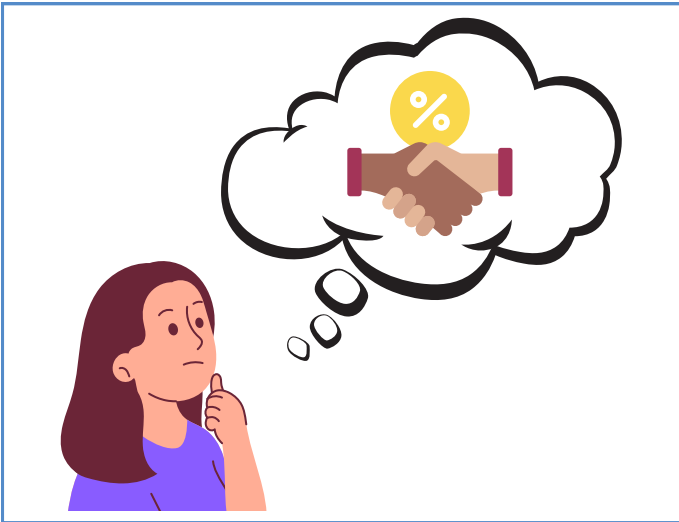


This step is about how decisions about social care and housing are made in your area.

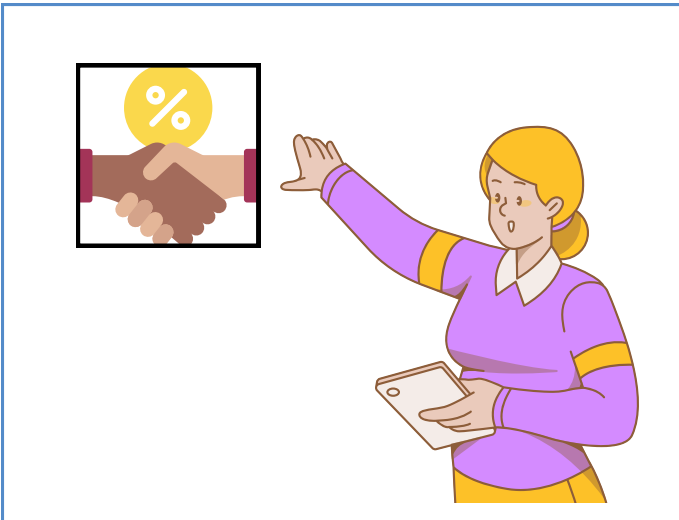


It is about understanding how the local authority works with organisations that deliver housing and support. This is called commissioning.

How can I contribute to this step? Some examples:



I am supported to understand what commissioning is and how it works in my area.



I help to describe local commissioning so that others can understand it too.

First published in Great Britain in March 2025 by the Social Care Institute for Excellence

© SCIE All rights reserved

www.scie.org.uk

Updated in March 2025

Toolkit available at: <https://www.scie.org.uk/housing/toolkit-for-place-based-strategies-for-housing-for-autistic-adults-and-adults-with-a-learning-disability/>