

**Easy Read**

Toolkit for local housing strategies

for autistic adults and adults with a learning disability

Step 6: What are the good examples of housing in other places?



This step is about learning from good examples of housing for autistic adults and adults with a learning disability developed in other parts of the country.



It includes looking at research and learning about new types of housing, designs and services that can support people to have a better life.

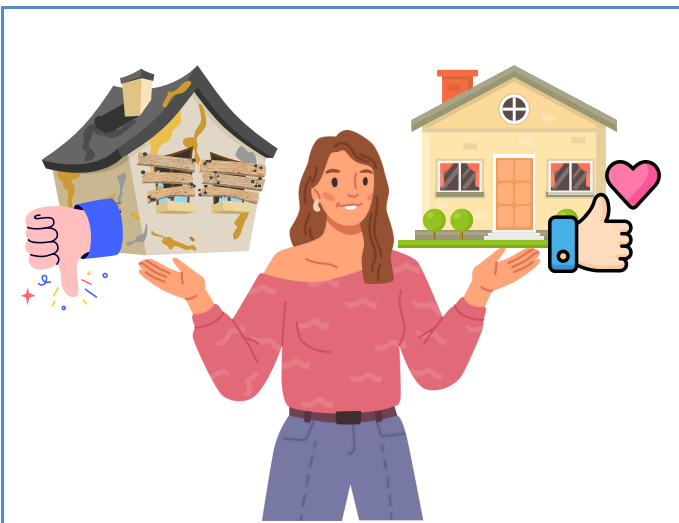
How can I contribute to this step? Some examples:



I can learn about good examples of different types of housing, designs, and support.



I say what is important about the quality and characteristics of housing options that best suit my needs.



I help decide which examples of housing are best practice, based on my needs.

First published in Great Britain in March 2025 by the Social Care Institute for Excellence

© SCIE All rights reserved

www.scie.org.uk

Updated in March 2025

Toolkit available at: <https://www.scie.org.uk/housing/toolkit-for-place-based-strategies-for-housing-for-autistic-adults-and-adults-with-a-learning-disability/>