

**Easy Read**

# Toolkit for local housing strategies

for autistic adults and adults with a learning disability

## Step 8: What do other partners think about this plan?

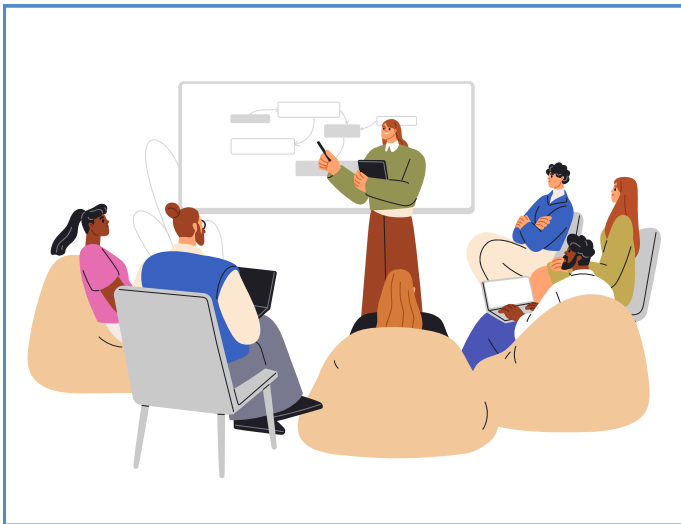


This step is about talking to other local people and organisations about the information from steps 1-7. This helps everyone to understand the strategy and they can give feedback.

## How can I contribute to this step? Some examples:



I help to decide which people and organisations should be involved in this step.



I help decide the best way of explaining the strategy to different people so they can be included.



I speak with people and organisations about housing for autistic adults and adults with a learning disability and why it is important.

First published in Great Britain in March 2025 by the Social Care Institute for Excellence

© SCIE All rights reserved

[www.scie.org.uk](http://www.scie.org.uk)

Updated in March 2025

Toolkit available at: <https://www.scie.org.uk/housing/toolkit-for-place-based-strategies-for-housing-for-autistic-adults-and-adults-with-a-learning-disability/>