

Integrated Care Webinar series 2022 / 2023

Webinar:

**Integrated care systems, digital
and data**

Monday 27 June 2022

**NHS England and Improvement
System Transformation, in
partnership with the Social Care
Institute for Excellence (SCIE)**

NHS England and NHS Improvement



social care
institute for excellence

Your panel today

- Dr Tim Ferris, National Director of Transformation, NHSEI
- Sonia Patel, System Chief Information Officer/Director of Levelling-up, NHSEI
- Eddie Olla, Regional Director for Digital Transformation, NHSEI Midlands
- Abby Vella, West Midlands ADASS Digital Lead.

NHS England and NHS Improvement



social care
institute for excellence

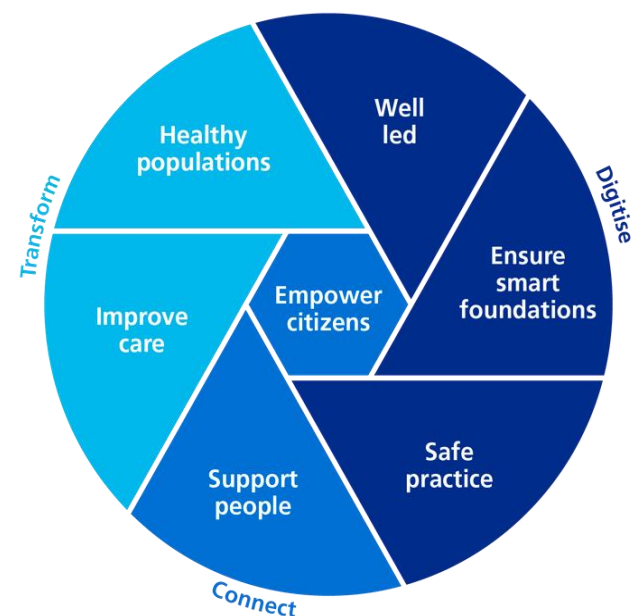
National ICS Development Webinar

Sonia Patel



- Our focus fits with the **wider government agenda for levelling up**
- **85% of all NHS secondary care providers** have made progress towards digitisation, with **23% highly digitally mature**, however **15% continue to rely heavily on paper**.
- An approach where **nationally we define requirements and standards with local systems** and provide some financial assistance.
- Levelling up frontline digital technology will help **transform services**

Our vision is a **digitised health and care system** where the health service and its users have the digital services and **access to information** they need to effectively manage and improve health and wellbeing.





Coverage

90% of providers will have an EPR in place by March 2023 and by 100% of providers will have an EPR in place by March 2025



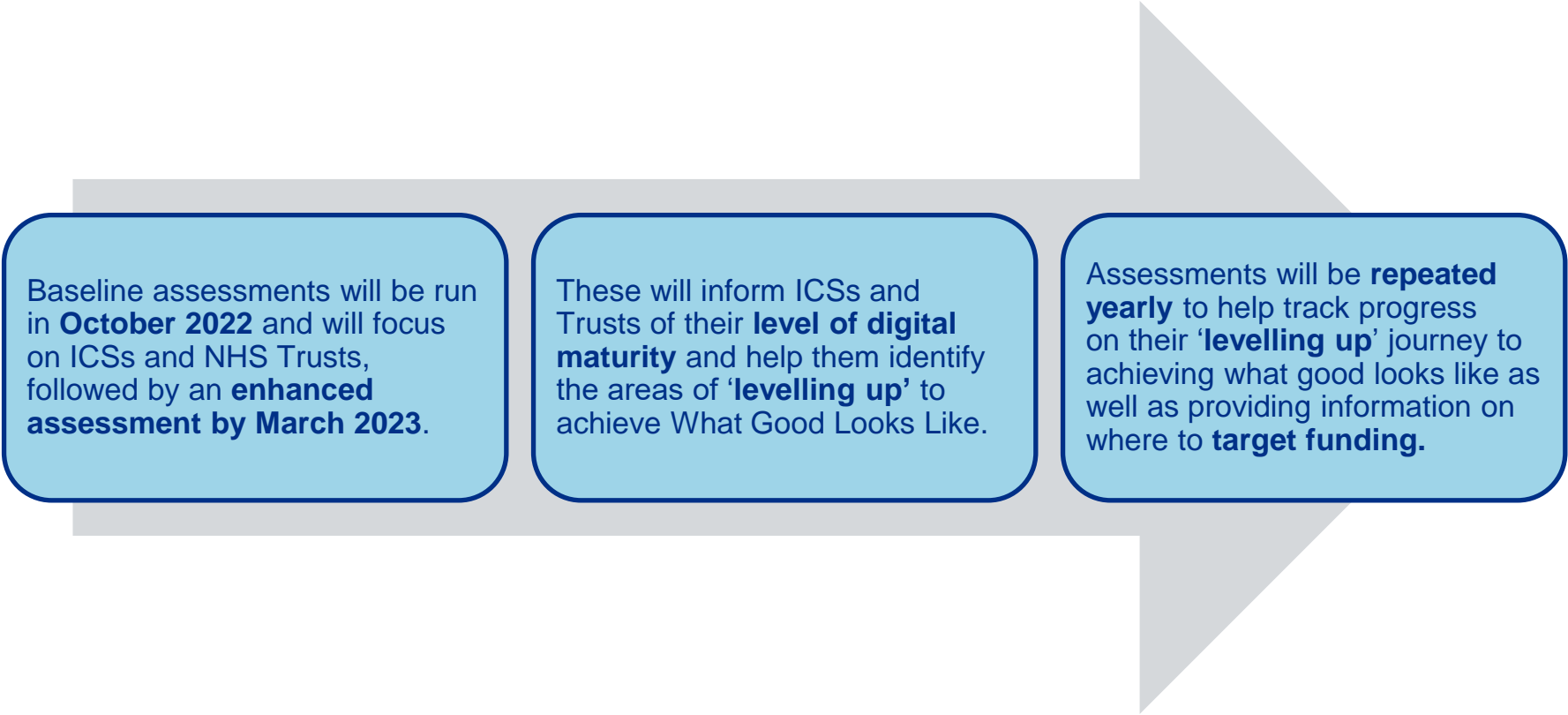
Capability

As many providers as possible will meet our minimum capability standard for digitisation (equivalent to HIMSS5) by March 2025



Convergence

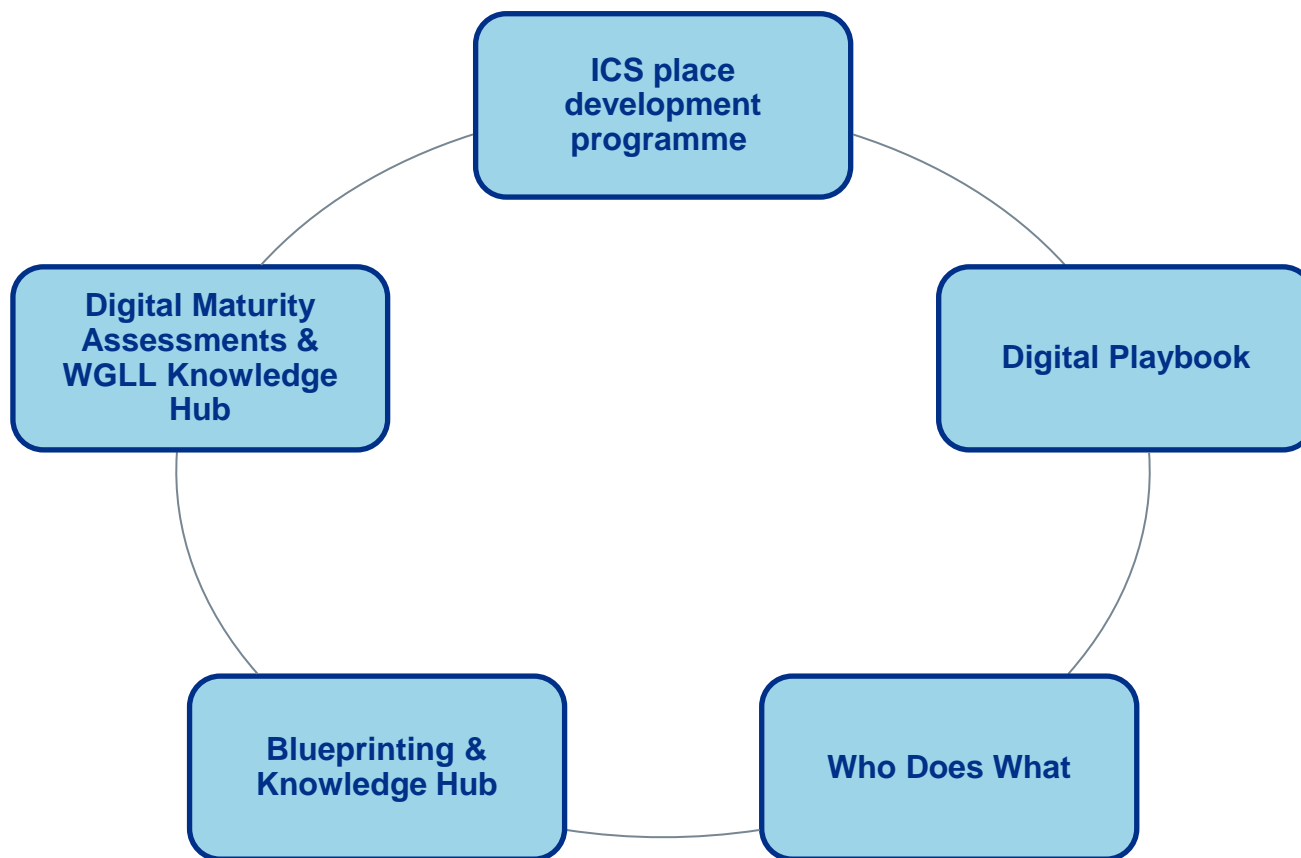
All ICSs will develop a convergence/ shared EPR strategy, appropriate to local context

A large, light grey arrow points from left to right across the middle of the slide. Three light blue rounded rectangular boxes are positioned along the path of the arrow, each containing text. The boxes are connected by a thin dark blue line.

Baseline assessments will be run in **October 2022** and will focus on ICSs and NHS Trusts, followed by an **enhanced assessment by March 2023**.

These will inform ICSs and Trusts of their **level of digital maturity** and help them identify the areas of '**levelling up**' to achieve What Good Looks Like.

Assessments will be **repeated yearly** to help track progress on their '**levelling up**' journey to achieving what good looks like as well as providing information on where to **target funding**.





Integrated care webinar series: Digital, data and innovation

Abby Vella

Digital Lead, West Midlands ADASS

At a glance: Adult Social Care in the West Midlands



Over **4.5 million** adults living in the West Midlands & **86,465 people** receiving long term care and support

- ❖ **47,194** care home beds
- ❖ **50,893** people receiving home care
- ❖ **336** supported living locations
- ❖ **79%** CQC registered locations good or outstanding



85% Urban 4.76m people	15% Rural 846k people
--	---------------------------------------



£2.1bn gross expenditure on adult social care...
...adding **£4.3bn** to the economy each year

Value of
unpaid care by
over
661,000
carers =
£16.8bn...

Provides 150,875 jobs

Gender



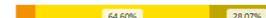
84.03%



15.97%

Age Range

The **Average** age is: **45**



● Under 25 ● Age - 25 - 54 ● Age - 55 Over



“Striving to have the best regional improvement programme in England”

Working across boundaries

Example 1: Digitising Social Care

Purpose of today

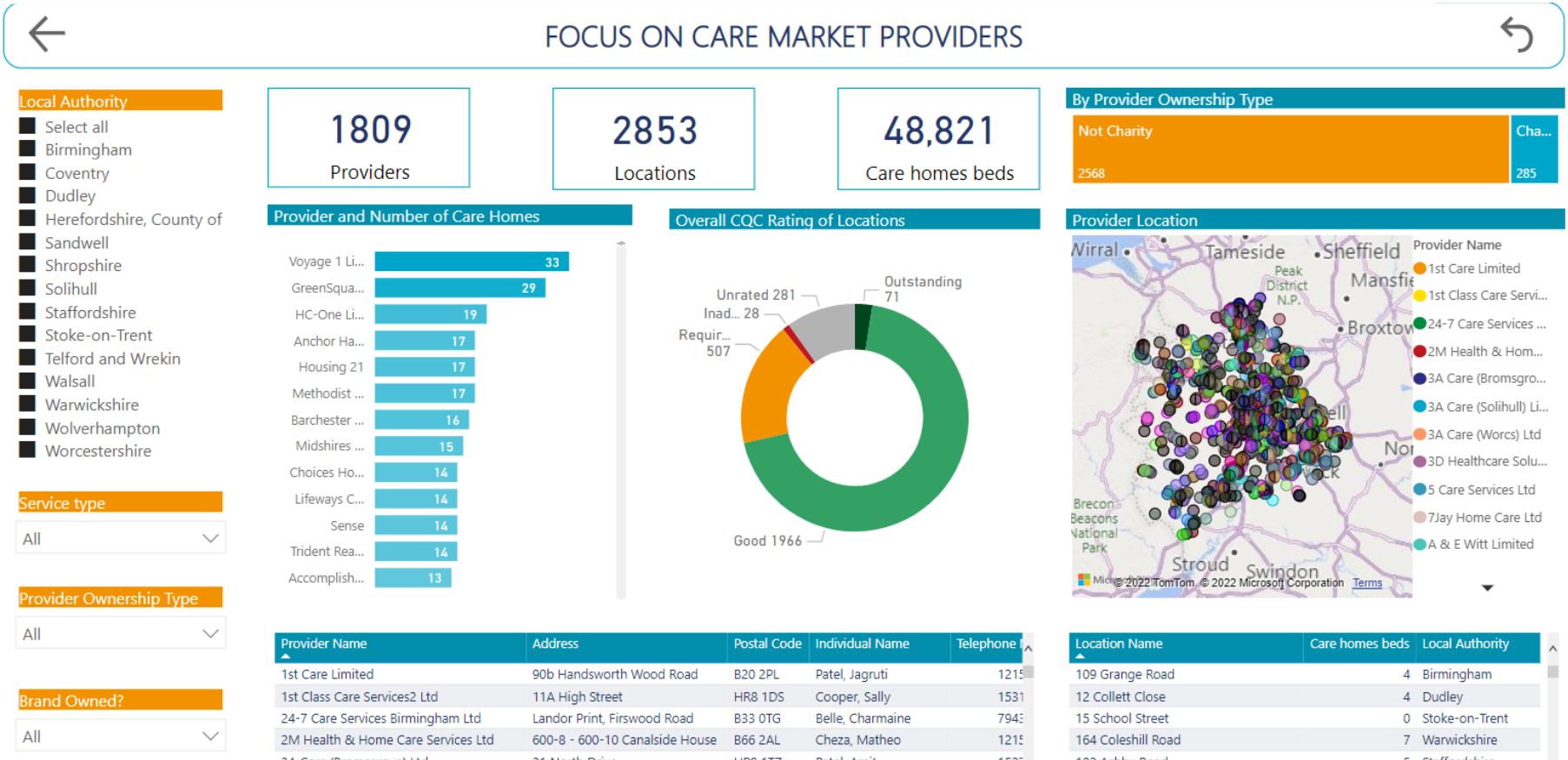
- A joint webinar across health, local government and adult social care providers to raise regional awareness of the DISC programme
- To understand what DISC means for us in the Midlands – what does the care market look like? What examples of good practice are there already that we can learn from?
- To consider how we best work together to achieve the programme's aims. Is there further support that can be provided?

Data saves lives: reshaping health and social care with data

What Good Looks Like

Seven success measures for successful digital transformation

2. Data and Intelligence Hub

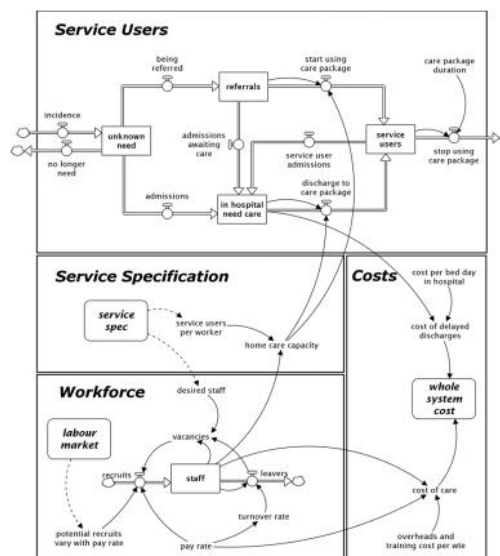


3. Using System Dynamics to explore future implications of home care demand in the West Midlands

A partnership with Midlands and Lancs CSU)

By changing Something, Everything changes

(focus on connectedness)



- 11 Whole system cost may go up or down
- 10 Cost of delayed discharges goes down
- 9 More service provided - cost of care goes up
- 8 Fewer people waiting at home
- 7 Delayed discharges will be lower
- 6 People will leave waiting lists faster
- 5 We can provide more care
- 4 Staff employed will increase
- 3 Turnover will slow down
- 2 We will recruit more people more quickly
- 1 If we offer a higher rate of pay



“Striving to have the best regional improvement programme in England”

Closing reflections...

1. Social care a key partner – local gov *and* the care market (care homes, home care, supported living etc). An opportunity for stronger, more equal partnerships and greater influence
2. Investment across housing, transport & leisure for population health (not just NHS and social care). Local gov's bread and butter – bringing strength to ICPs
3. Co-production & personalised care, creating space in our programmes for local, front-line insight and expertise to be channelled.

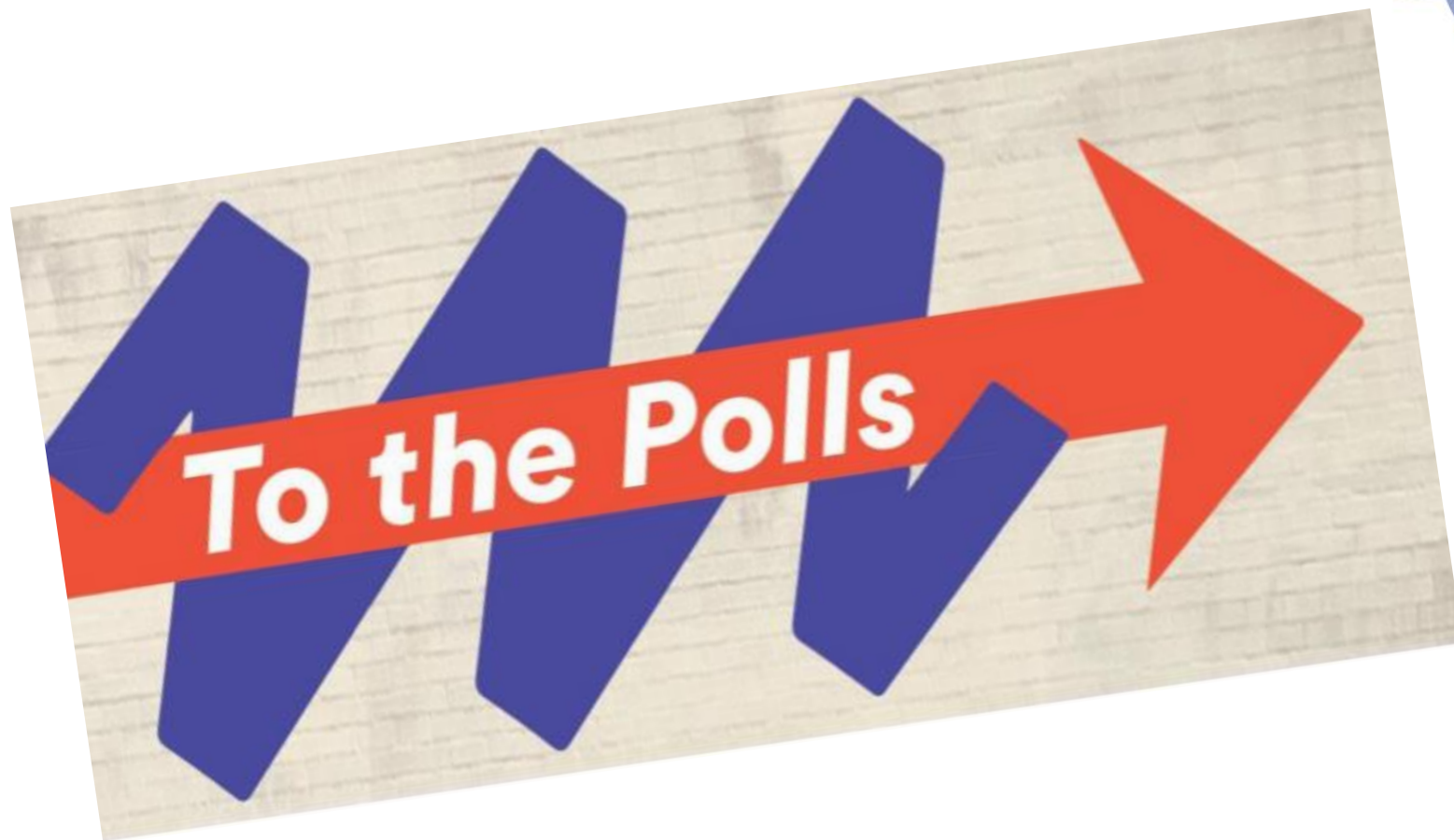
Panel discussion



NHS England and NHS Improvement



social care
institute for excellence



NHS England and NHS Improvement



social care
institute for excellence

Poll 1

How much would you say this webinar has increased your understanding of ICSs addressing digital and data issues?





Poll 2

Has much would you say this ICS webinar met your expectations?

NHS England and NHS Improvement



social care
institute for excellence

Integrated Care Webinar series 2022 / 2023

A recording of the webinar, slides and resources will be shared on the Integrated Care Learning Network.

To join the network email
integratedcare-manager@future.nhs.uk

NHS England and NHS Improvement



social care
institute for excellence