

social care  
institute for excellence



Gavin Nettleton  
Principal Adviser e-Learning  
March 2006

social care  
institute for excellence



# SCIE's purpose

- SCIE was launched in October 2001 as part of the Government's drive to improve social care.
- It is an independent registered charity, governed by a board of 13 trustees.

# SCIE's role

- To find out what is known
- To translate this into guides for policy, practice and service delivery
- To encourage and enable evidence-based practice in social care
- To disseminate and promote

# Sources of knowledge

- Users, their supporters and carers
- Practitioners and managers
- Research
- Audit and inspection

# SCIE's principal stakeholders and partners include:

- Service users, carers and their representative organisations
- Social care workers and managers in the voluntary, statutory and independent sectors
- National organisations in social care and related sectors
- Policy makers and government departments in England, Wales, Northern Ireland and Scotland
- Social work educators, including academics, practice teachers and service users
- researchers

# SCIE's networks

- Partners' Council
- Practice Partners' Council
- Parental Mental Health and Child Welfare Network
- Fostering Collaborative
- Human Resource Network

# Social Care

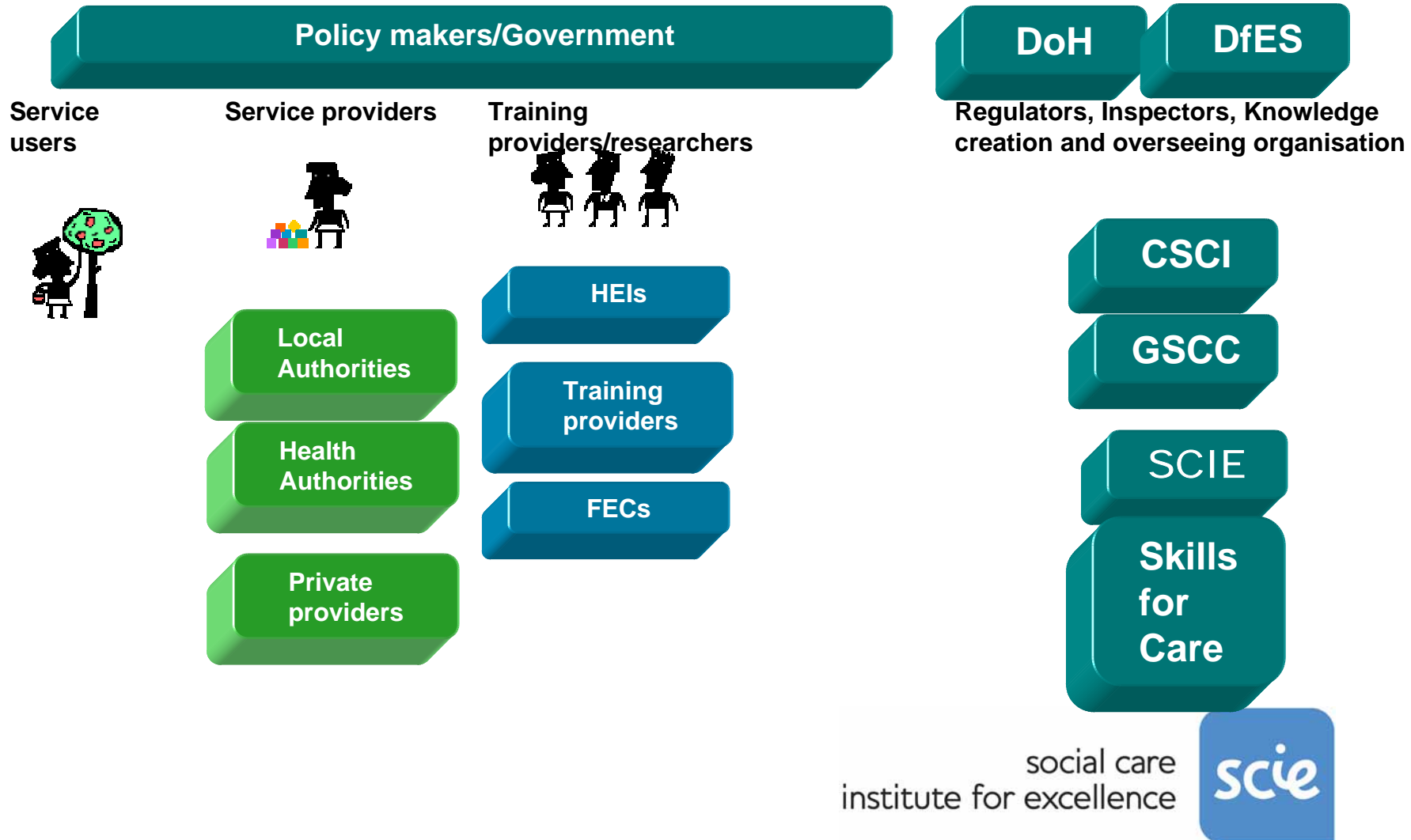


social care  
institute for excellence

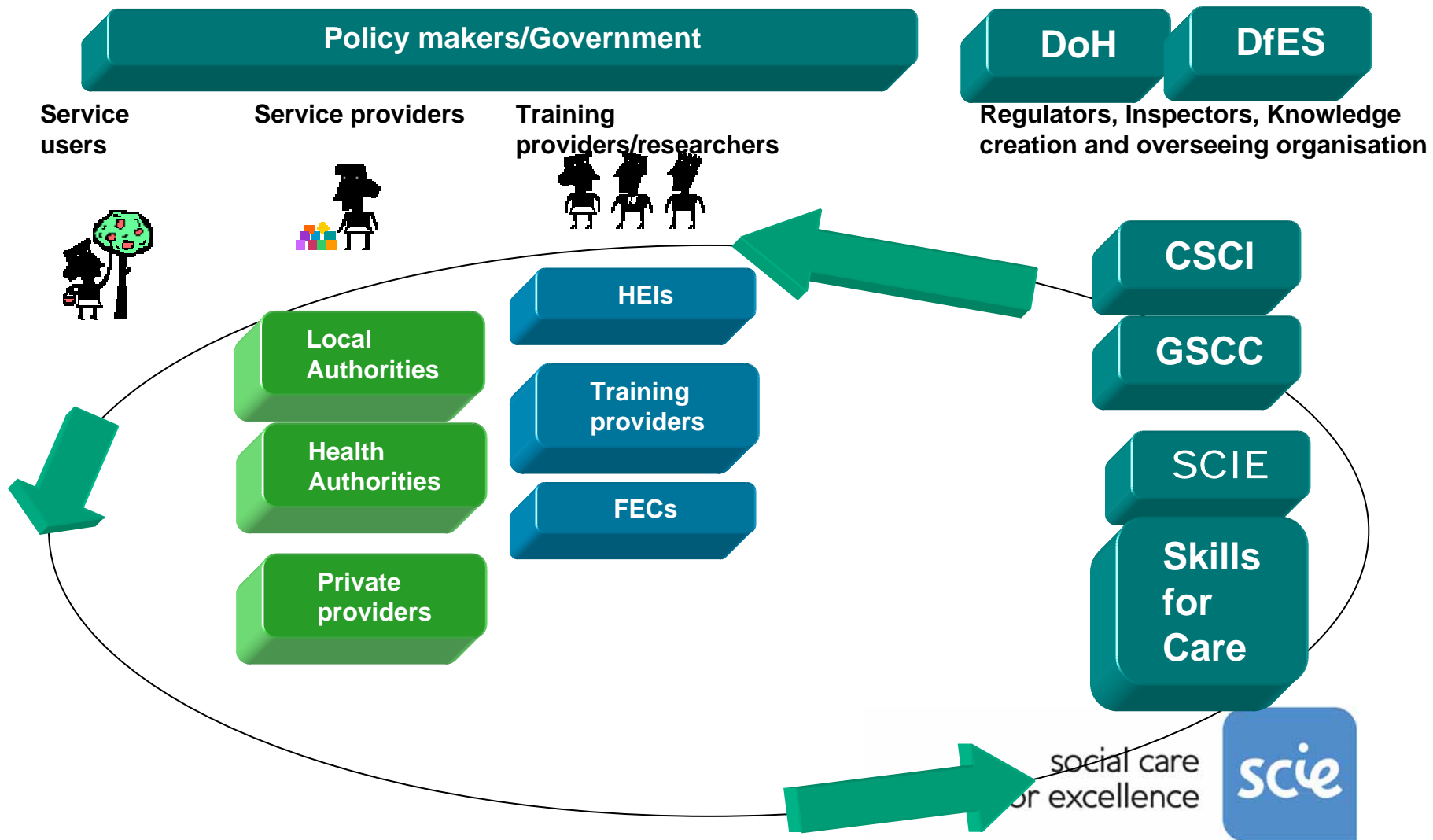




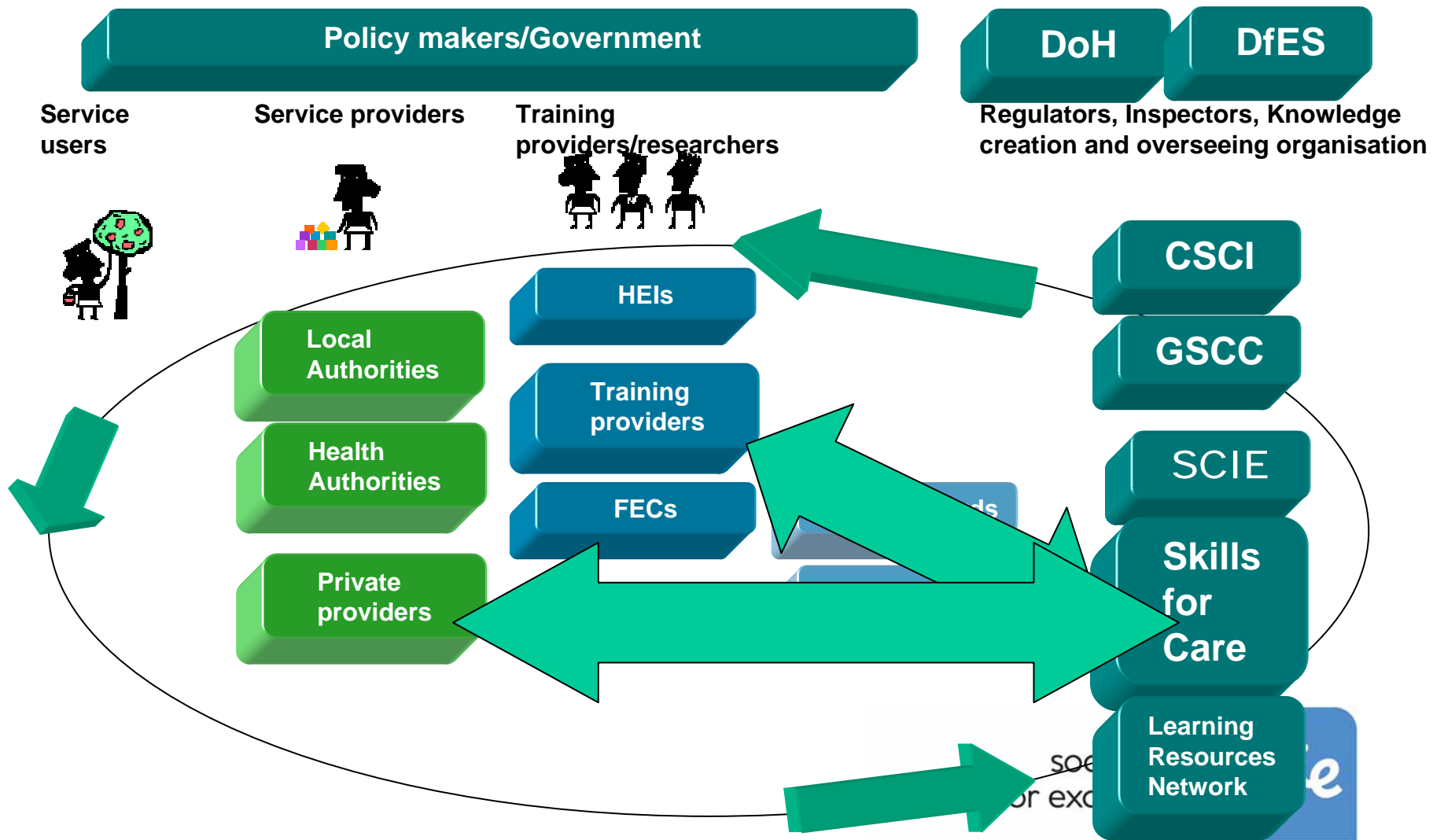
# Structures in Social Care



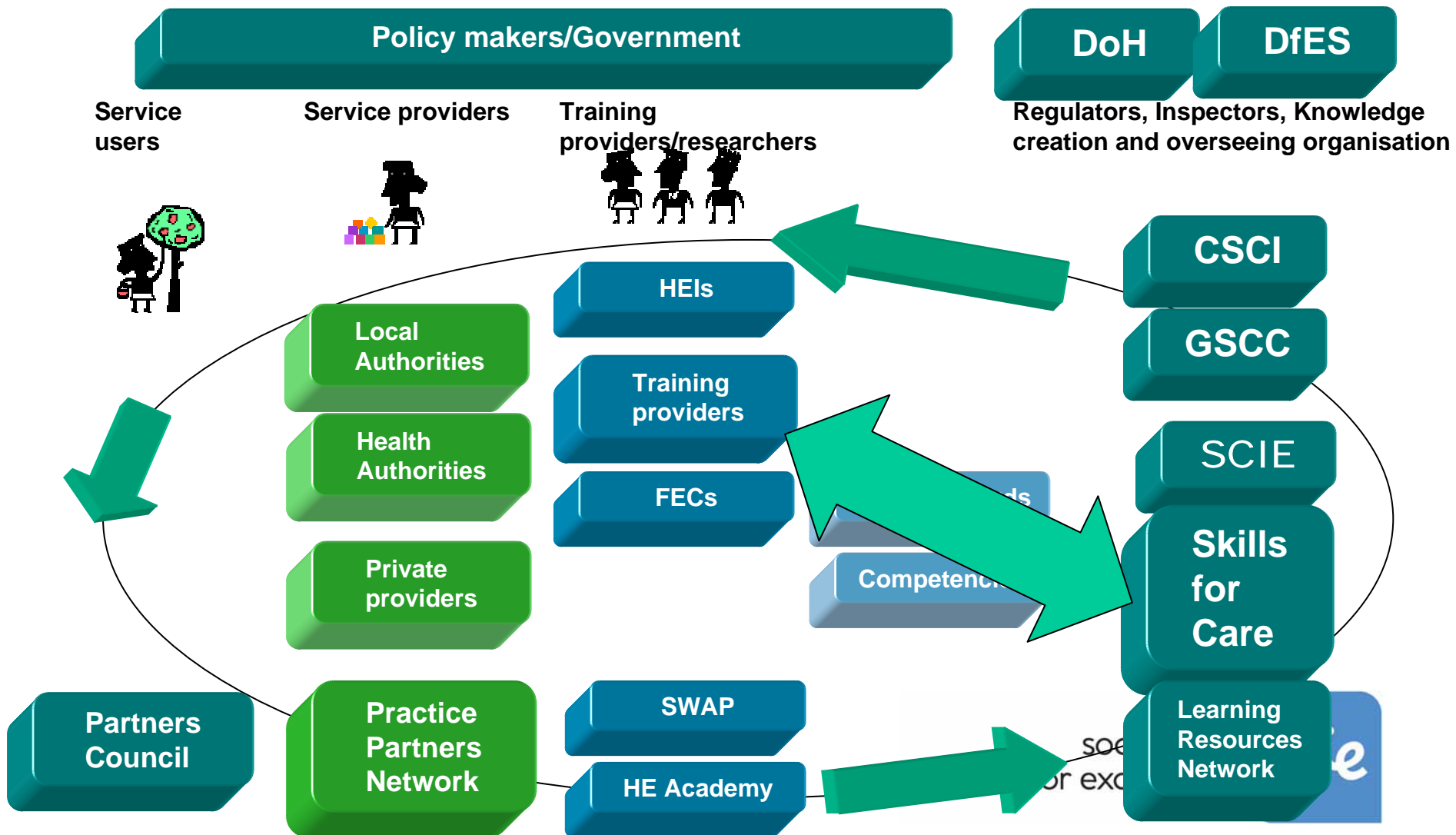
# Knowledge cycles in Social Care



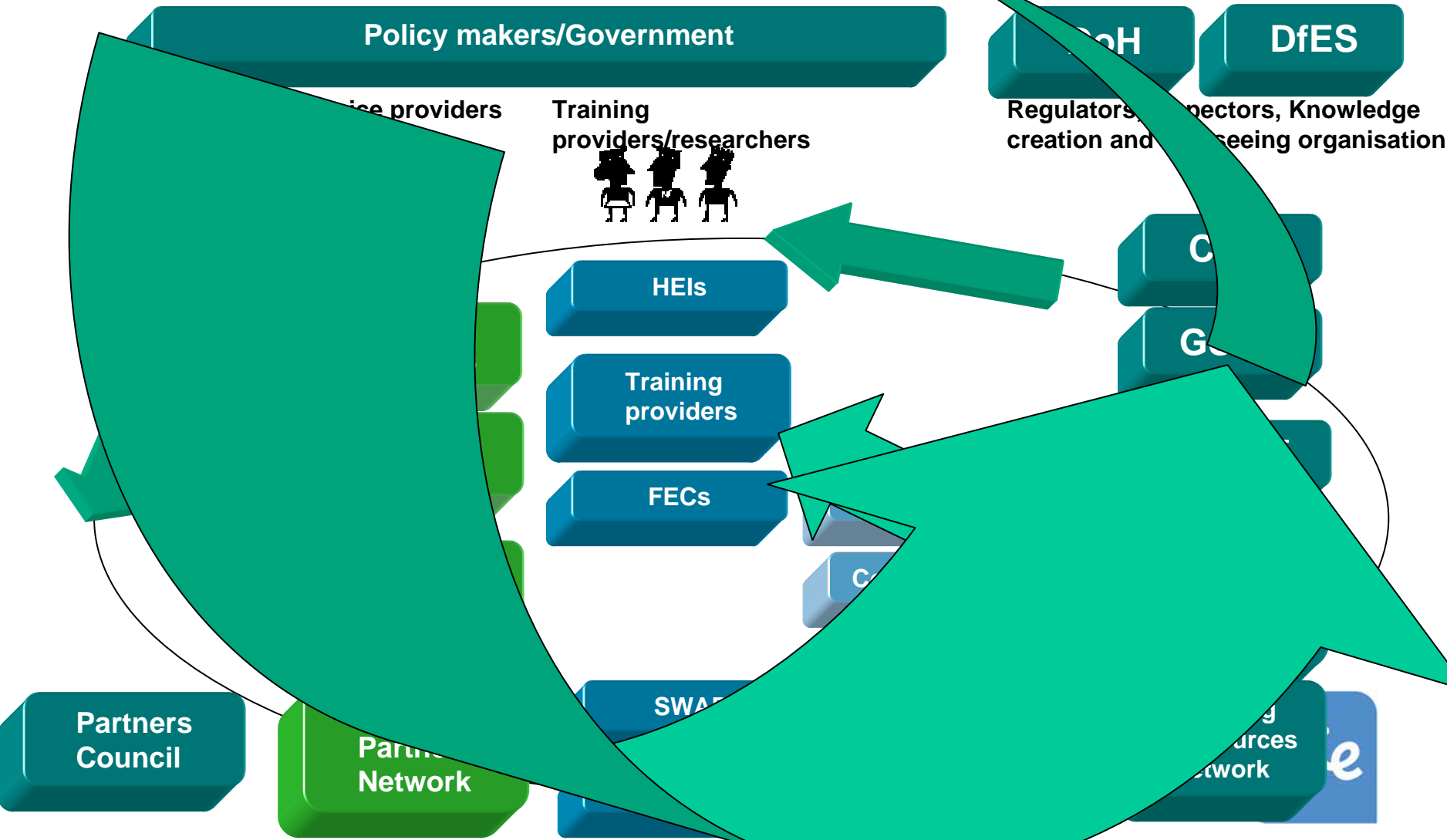
# Knowledge cycles in Social Care



# Knowledge cycles in Social Care



# Knowledge Flows in Social Care



# Challenges

- Becoming a trusted source of knowledge in social care
- Useful and usable products and services
- Beyond the bookshop and the web

# A trusted source of knowledge

- Inclusive
- Comprehensive
- Open

# Useful and useable products

- Ownership
- Design



# Beyond the bookshelf and the web

- Active dissemination
- Support for implementation

social care  
institute for excellence



# SCIE's eight themes

- Adults' services
- Children and families' services
- E-learning
- Knowledge management
- People management
- Social work education
- Stakeholder participation
- Using knowledge to support social care

# Types of resource

- Knowledge reviews
- Resource guides
- Practice guides
- Research briefings
- Position papers
- Reports
- Training packs
- Websites

# SCIE's resources

- All resources can be downloaded from our website
- Most resources are available in hard copy  
- call 020 7089 6840
- All resources are **free**

# SCIE website

[www.scie.org.uk](http://www.scie.org.uk)

social care  
institute for excellence



# Social Care Online



social care  
institute for excellence

