

# Plenary: Derby Healthy Housing Hub

**Safia Iqbal**

Healthy Housing Manager

Derby City Council

**Integration and  
Better Care Fund**

---





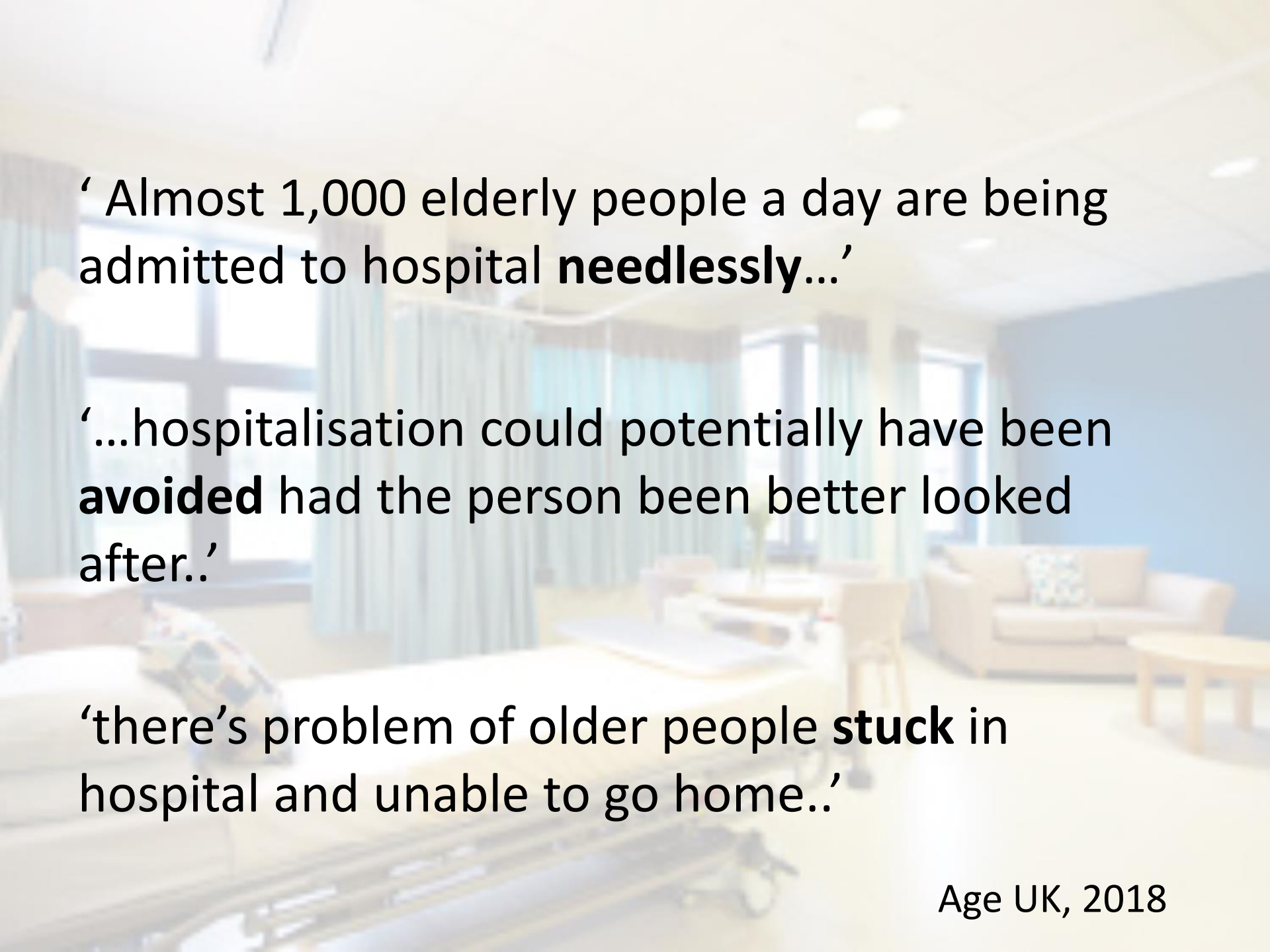
# Healthy Housing Hub

*Living well, Living longer, Living at home...*

**Safia Iqbal**  
**Healthy Housing Manager**



Derby City Council



‘ Almost 1,000 elderly people a day are being admitted to hospital **needlessly**...’

‘...hospitalisation could potentially have been **avoided** had the person been better looked after.’

‘there’s problem of older people **stuck** in hospital and unable to go home..’



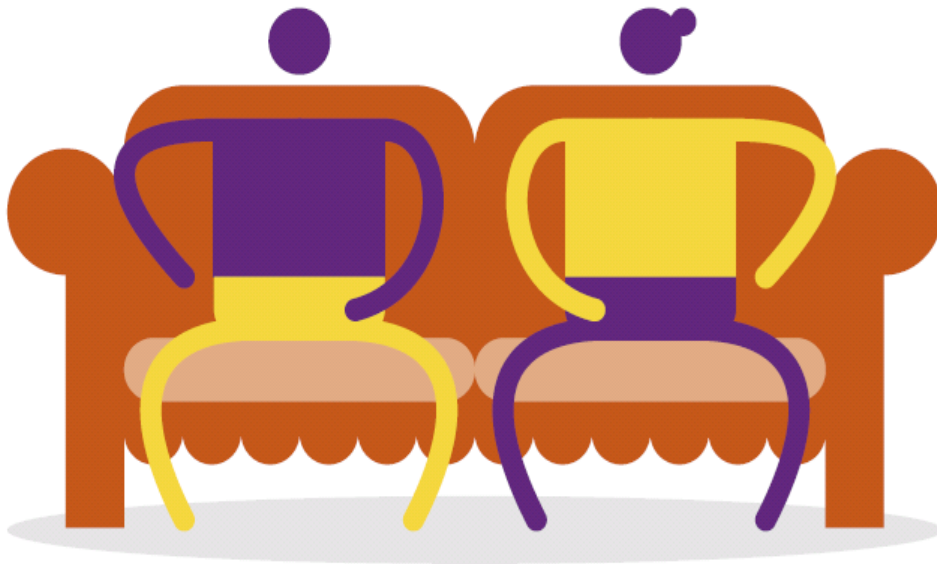
# Who are we?

- Part of Derby City's BCF plan
- Support Derby City's JSNA and H&WB strategy
- Our partners include: Fire Service, Police, Hospital Discharge teams, EMAs, Social Services, OTs, GPs and Community Matrons.

# Why Healthy Housing Hub?

CENTRE FOR  
**AGEING  
BETTER**

People spend a large amount of their time at home in later life



---

People aged 85 and over spend an average of **80%** of their time at home\*

# Why Healthy Housing Hub?






## **Part of Derby City's BCF plan...**

Our Healthy Housing Hub provides help to some of Derby's most vulnerable residents living in unsafe and unhealthy conditions



- 
- ✓ Reduce home accidents, falls and general health risks;
  - ✓ Reduce demand on health, social care and emergency services;
  - ✓ Maintain independent living within own home;
  - ✓ Facilitate hospital discharge and reduce readmissions;
  - ✓ Make the home environment suitable for care services delivered in the home;
  - ✓ Increase client and carer wellbeing;
  - ✓ Enhance childhood development; where poor living conditions may impact on health, educational attainment...






# BCF Metrics

- Reducing non-elective (unplanned) admissions to hospital...
- Ensure...those who receive assistance in their residence...remain at home 91 days after...
- Substantially reduce delayed transfers of care...
- Reduce no. of permanent admissions to residential or nursing settings...

Evidenced by Derby's Director of Public Health...  
*“at one year post intervention, proportionally fewer Hub clients were in need of health and care services”:*

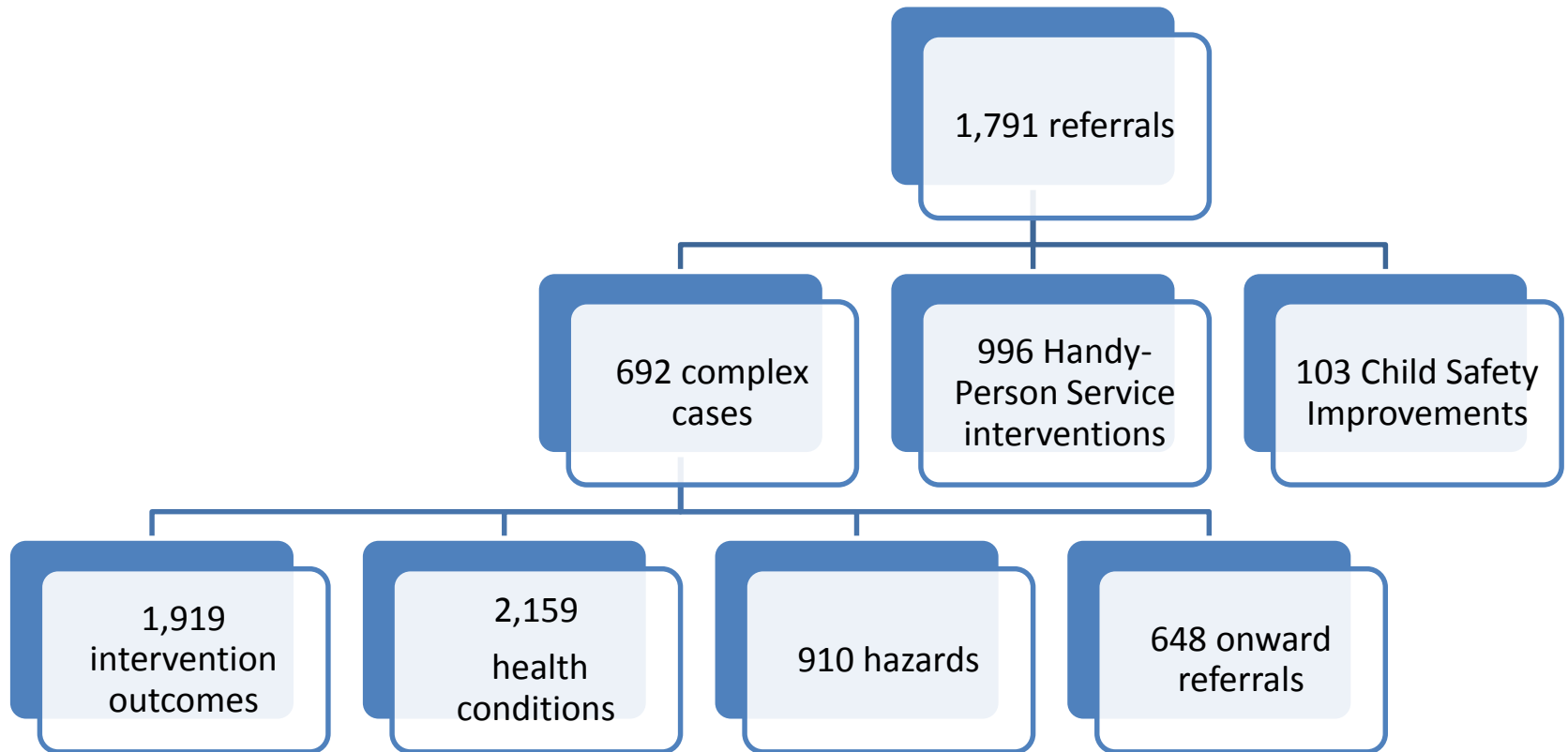
<b>Use of A&amp;E</b> <b>39.5%</b> reduction	<b>Acute Hospital</b> <b>53.8%</b> reduction in stays	<b>Admissions</b> <b>20%</b> fewer hospital admissions
<b>EMAS</b>  reduction in contact and conveyance to hospital	<b>91%</b> of clients still in own homes at 12 months	<b>86.3%</b> felt benefit in health, wellbeing, anxiety, confidence



## Service User Feedback

- *“The support enabled the customer to return home in an environment that was safer... without your help she would not have been able to return home at all...”*
- *“Thank you for helping me with my difficult circumstances...I would have taken my life...I had no reliable help but [your] intervention saved my life...”*
- *“I can live at home now with dignity ...Thank you.”*
- *"You made a huge difference...it was squalid, the risk to health enormous and the client would probably not have survived...& they now comply better with medical input"*

# 2017-18 Performance Data





# Future Plans and Potential Challenges

- Funding Stream
- Ageing population living in ageing housing
- Higher bar for social care
- Funding loss for voluntary support services
- Data sharing challenges
- Efficient process to identify patients at risk
- Speedier process to identify 'housing risks' during the discharge process



# Contact details

Safia Iqbal [safia.iqbal@derby.gov.uk](mailto:safia.iqbal@derby.gov.uk)

Healthy Housing Hub

[healthyhousing@derby.gov.uk](mailto:healthyhousing@derby.gov.uk) /  
[healthyhousing@nhs.net](mailto:healthyhousing@nhs.net)

Phone: 01332 640 337

Twitter: [@DerbyCCHHH](https://twitter.com/DerbyCCHHH)

Web: [www.derby.gov.uk/healthyhousing](http://www.derby.gov.uk/healthyhousing)