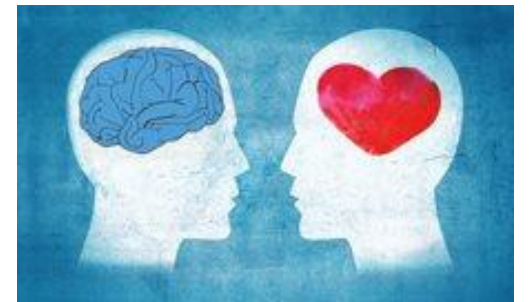


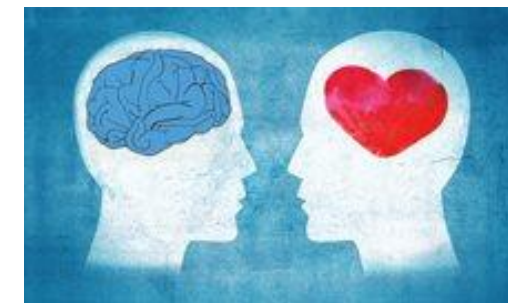
# *'It's their choice...'*

Assessing capacity for individuals with learning disabilities and autism who are at risk



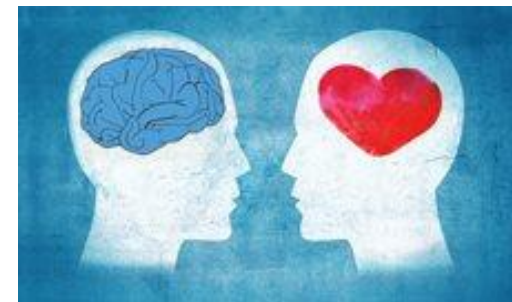
## It's their choice...

- How many of you have heard the expression 'its their choice?'
- Working with adults with learning disabilities and autism I have heard this many times
- As people get a taste for life they desperately want to fit in and make friends
- People find themselves in situations that they don't have the social or emotional skills to deal with
- Often motivated by both a desire to protect and fear of accountability
- The question of capacity is raised; can we intervene?
- If the wrong decisions are made this can end in tragic consequences



## Literature...

- Such situations are really stressful for everyone
- There is a focus on Best Interests not what happens when people are deemed to have decision making capacity
- More research is needed to understand how best to support people with learning disabilities and autism to make decisions, the role of emotion in real world situations
- It can be hard to translate theory into practice for Everyday Decisions
- There can be misconceptions about the MCA and the burden of assessing capacity can weigh heavily on professionals
- Assessments can be led by the desire to protect
- Perhaps if we felt more confidence that there was a process to evolve with a person and support them to develop and understand the risks we may feel less apprehensive



## Next steps...

- My aim is to use my research to gain a better understanding about the assessment process for everyday decisions where people with learning disabilities and autism are putting themselves at risk
- Using action research I will investigate people's lived experiences of assessment and supported decision making
- I aim to interview professionals who have experience in this area and who would like to develop practice through sharing their experiences so we can learn from these and enhance practice
- Develop a supportive resource for multi-agency working to ensure that we can evolve our support whilst balancing duty of care and autonomy

