



Institute for Sustainability,
Health and Environment

healthy people + healthy planet

Sustainable Systems of Social Care

Emerging findings from a research project

Simon Evans, Senior Research Fellow



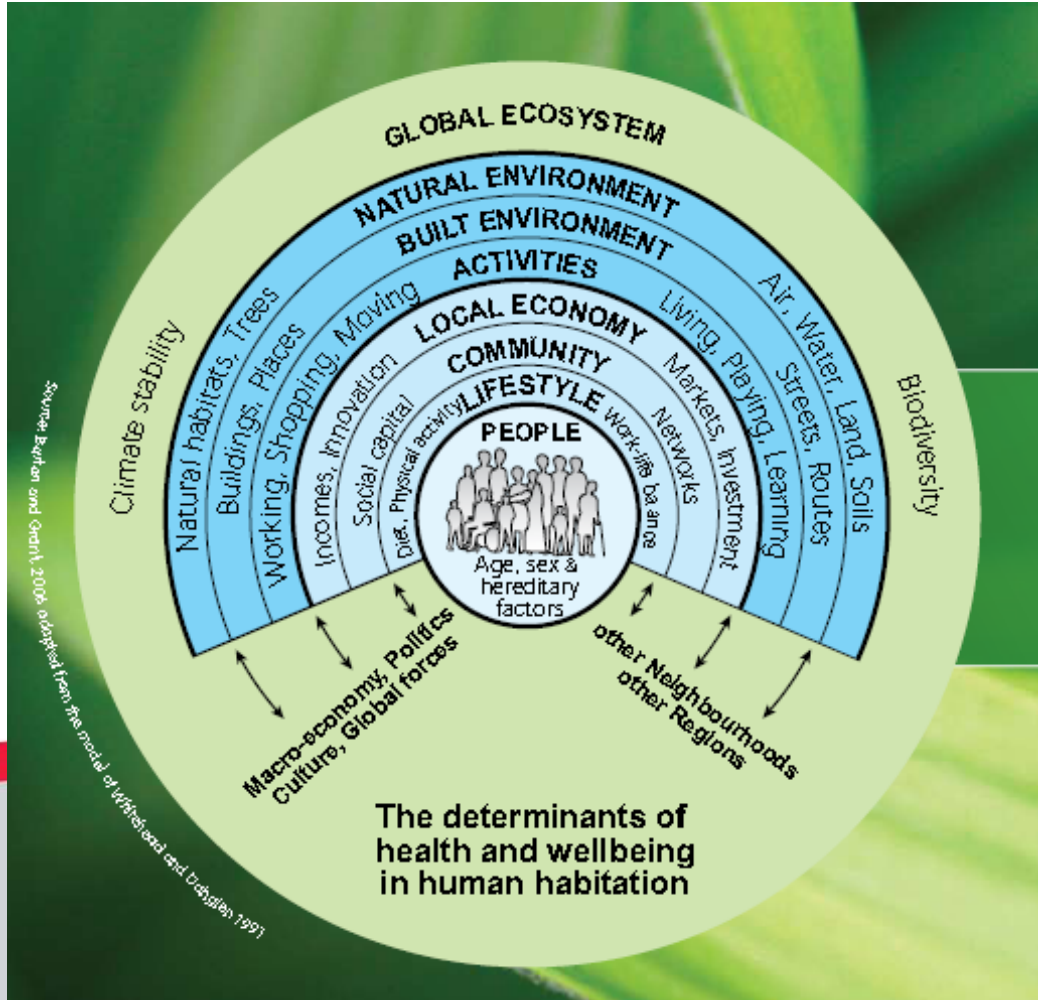
University of the
West of England

bettertogether



healthy people + healthy planet

Sustainability, Health and Environment



- Simon Evans
- Judy Orme
- Sarah Hills
- Lucy Grimshaw
- Bruce Senior
- Karen Jones

About the Research

- Main Aims:
 - to identify criteria for sustainable systems of adult social care.
 - to explore the opportunities and challenges that a sustainable model presents.
- Drivers include personalisation agenda.
- Based on mapping work and case studies.



Institute for Sustainability, Health and Environment

healthy people + healthy planet



Development Unit

The Policy Context



Fit for the Future

Scenarios for low-carbon healthcare 2030

September 2009



Climate Change Plan

HM Government



Designed by John McCabe student at the University of the West of England



Saving Carbon, Improving Health



NHS CARBON REDUCTION STRATEGY FOR ENGLAND
January 2009



stershire Hospitals NHS
NHS Foundation Trust

Policy Themes

Addressing Climate Change

- Securing the future , Climate Change Act

Sustainable Procurement

- Sustainable Procurement Action Plan

Sustainable Communities

- Sustainable Communities Act

Sustainable Public Services

- Area Assessment Framework; CRC



Travel - Procurement - Facilities Management



Workforce - Community Engagement - Buildings



HM Government

Putting People First
A shared vision and commitment
to the transformation of
Adult Social Care

Local Government Association | adass | NHS

Prevention

Early intervention

Enablement

Personalisation

Information, Advice, Advocacy

Personal Budgets

Sustainable Commissioning: Camden

- Developed with New Economics Foundation
- Incorporating social, economic and environmental outcomes in procurement and delivery
- Involving service users in decision making about commissioning
- Piloted in Adult Social Care

Time Together: Swansea

- Co-creation of social care and support
- Partnership: commissioners, providers, community, third sector, etc.
- Innovative Pilot: Person to agency time-banking, mutualism, localism
- Community focused: social capital, wellbeing, safety

Cornwall County Council

- Unitary Authority - Provides care for 30,000 people per annum
- Reducing care miles - approved provider scheme
- Resource efficiency - Refurbishment/recycling office equipment
- Preventative approach - reducing revolving door syndrome
- Sustainable procurement - corporate approach
- Strategic and organic – top down and bottom up
- Embedded EnReps

Bristol City Council

- Comprehensive service-wide approach
 - Environmental Policy, Peak Oil report
- Eco Management and Audit Team & System
 - Energy and water use, travel impact, recycling
- Environmental Advisors
- Ongoing work includes
 - Implementing Sustainable Procurement Strategy
 - Supporting Service Delivery Planning
 - Rolling out telecare

Policy & Strategy

Bringing multiple policies and strategies together

Applying policy to Adult Social Care services

A whole systems approach - top down and bottom up; mitigation and adaptation

Appointing (and embedding) champions – EnReps, Environment Advisors, etc

Squaring sustainability with personalisation



Communication and Education

Making the link between climate change and public services to professionals and service users

New methods of communication to increase public engagement; e.g. using social media

Complementarity – environmental, economic and social sustainability



Innovation

Supporting Commissioners to take a bold approach

Mutualism, localism, co-production, self managed care co-operatives, telecare, etc.

Allowing a longer term approach

Using examples of good practice

Increasing the evidence base

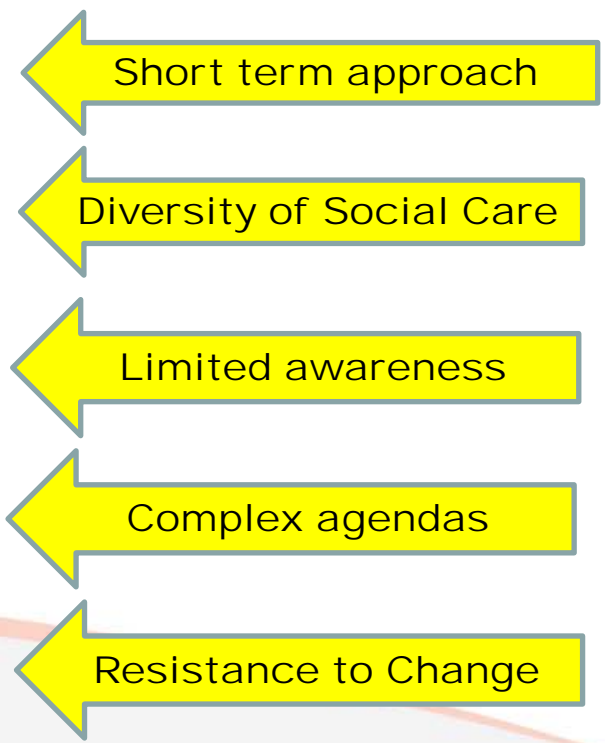


Enablers and Challenges

Forces for change



Forces against change





Final Report

- June 2010
- Criteria for sustainable social care
- Recommendations for commissioners

Simon.Evans@uwe.ac.uk

0117 328 1120