

Welcome

To a presentation about SCIE's Fostering Practice Guide

Mary Sainsbury

**Practice Development Manager,
SCIE**

social care
institute for excellence



SCIE fostering practice guide

- About SCIE
- The fostering practice guide
- www.scie.org.uk
- Exercise

About SCIE

- Launched in 2001 by Government, SCIE develops and promotes knowledge about good practice in social care
- SCIE works with people and organisations to identify useful information, research and examples of good practice
- SCIE produces free paper and web based publications and the electronic library for social care
- <http://www.scie-socialcareonline.org.uk>

social care
institute for excellence



Background to the Fostering Practice Guide

- **Contributes to Choice Protects**
- **Based on four recent reports, two commissioned by SCIE, one from UEA, and Messages from Research**
- **SCIE reports: innovative fostering schemes and what they tell us about effective practice, and a review of research about good outcomes**

Aims of the fostering practice guide

- **To improve practice by producing and sharing knowledge:**
 - **Key research findings**
 - **Ideas from practice**
 - **Practice points and questions**

Format: topics

- Children's views about foster care
- Children's needs
- Children's health
- Education
- Contact
- Temporary foster care
- Placement
- Foster carers
- User evaluation

[email update](#) | [contact us](#) | [links](#) | [site map](#) | [site help](#) | [home](#)

 go >[search](#)

Fostering guide index

[Home](#)
[About this guide](#)
[Children's views](#)
[Children's needs](#)
[Children's health](#)
[Education](#)
[Contact](#)

You are in: [SCIE website](#) > [Resources](#) > [Fostering practice guide](#) > [Children's health](#) >

Practice guide to fostering Physical health

[Key findings](#)
[Practice points](#)
[Research](#)

[Key findings](#)

As a result of their experiences, children in foster care are more likely than other children to have physical health problems.

Resources

[Legislation](#)

[Ideas from practice](#)

[Search eLSC](#)

Email alerts

[Sign-up to be informed of changes](#)

Foster carers' profile

Key research findings

- **Successful foster parenting includes:**
 - **parenting which combines boundaries with warmth.**
 - **An emphasis on the relationship and on flexible problem solving within it**
 - **Facilitating contact with birth parents**
 - **Flexibility and not being easily upset.**
 - **Encouragement about education and school**

Foster carers' profile

Practice points

- **Do workers and carers in your service spend time with children to listen and to offer encouragement?**
- **Do foster carers in your service combine setting boundaries with warmth and being encouraging?**
- **How can you help to recruit, train and support carers to develop these positive parenting characteristics?**
- **How you can facilitate discussion and training for carers about setting boundaries and discipline?**

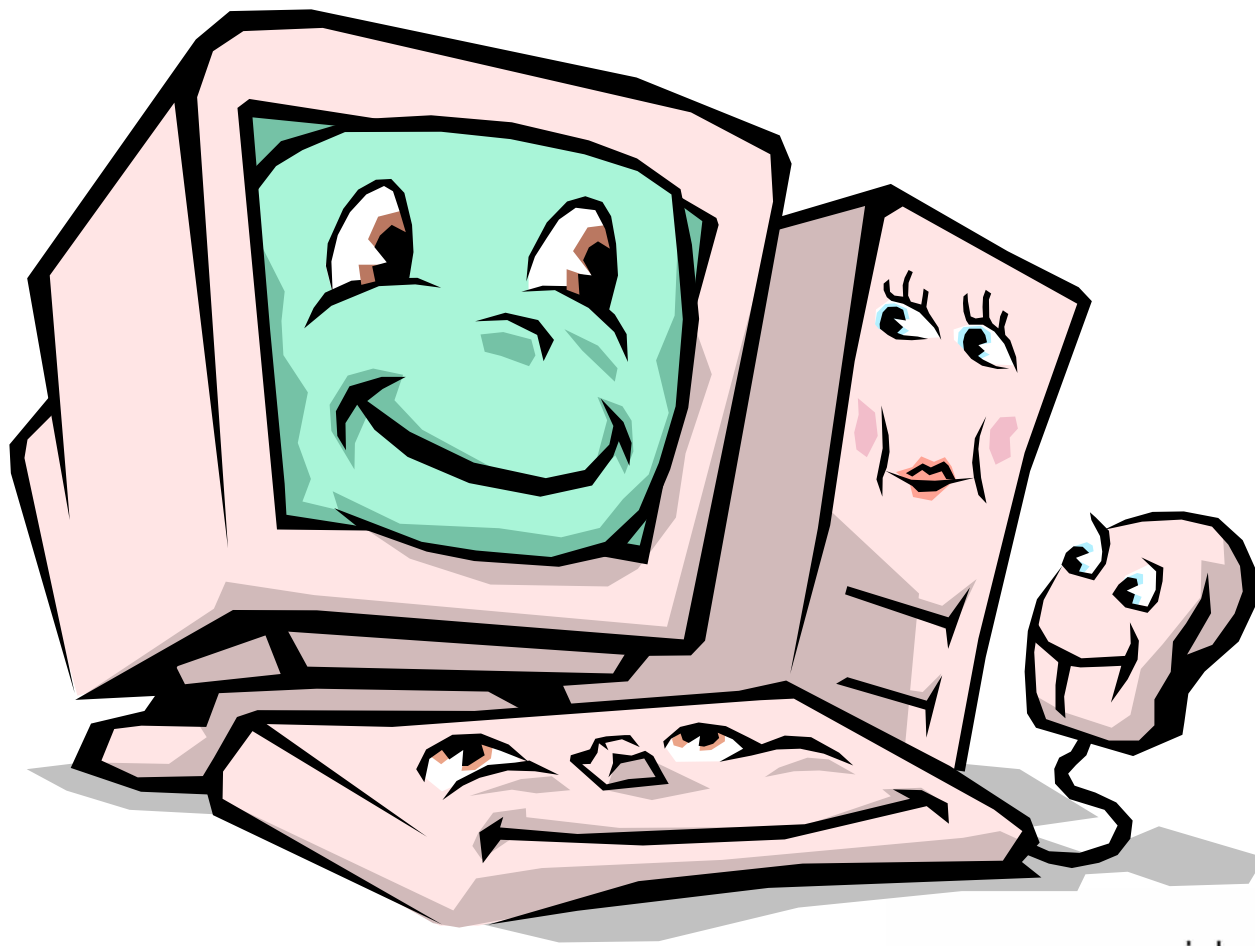
SCIE Fostering Collaboratives Project

- **Aim:**
 - **Measure practice improvements in the area which arise from using the Guide**
- **Method:**
 - **Monthly Data Collection Sheets**
 - **Monthly Practice Discussion Groups**
 - **2 National Events**

SCIE Fostering Collaboratives Project

- **Benefits:**
 - **Using evidence to improve services**
 - **Help staff to develop skills in practice based research**
 - **Develop common approaches to practice across the department**
 - **Put the practice guide to the test**

What's good about an online guide ?



social care
institute for excellence



What's good about an online guide ?

- **It's easy to access and won't get lost**
- **It will be regularly updated**
- **You can enlarge the font size**
- **It's quick and easy to load and use**
- **You can download, cut and paste, and print sections**
- **Layered information**

It won't get lost



social care
institute for excellence



Practice Points: Children's views

- Each section of the guide has 'practice points' derived from the key research findings
- In groups, discuss one practice point and work together to decide what you will do to make it happen
- Example from 'contact' section:
- Have you 'fine tuned' contact by consulting with the child / young person about contact with different family members ?

Practice point: children's views

- How can you find out whether the children you are working with feel valued, respected and loved, and how can you promote these positive feelings?

Practice point: children's views

- In what different ways can you help children maintain relationships with their birth families?

Practice point: children's views

- How can you help children feel listened to, empowered and in control of their own lives? How can you find out from children and young people about these issues?

Practice point: children's views

- How can you help children and young people work out an explanation that they can give to school and friends, about their current family situation?

Practice point: children's views

- Remember that children and young people want to enjoy an 'ordinary' family life in their foster family. How can you ensure that they are not being made to feel 'different' and how you can overcome this together?