

Chapter 6 figures

Figure 6.1 Numbers and Proportions of Children in England

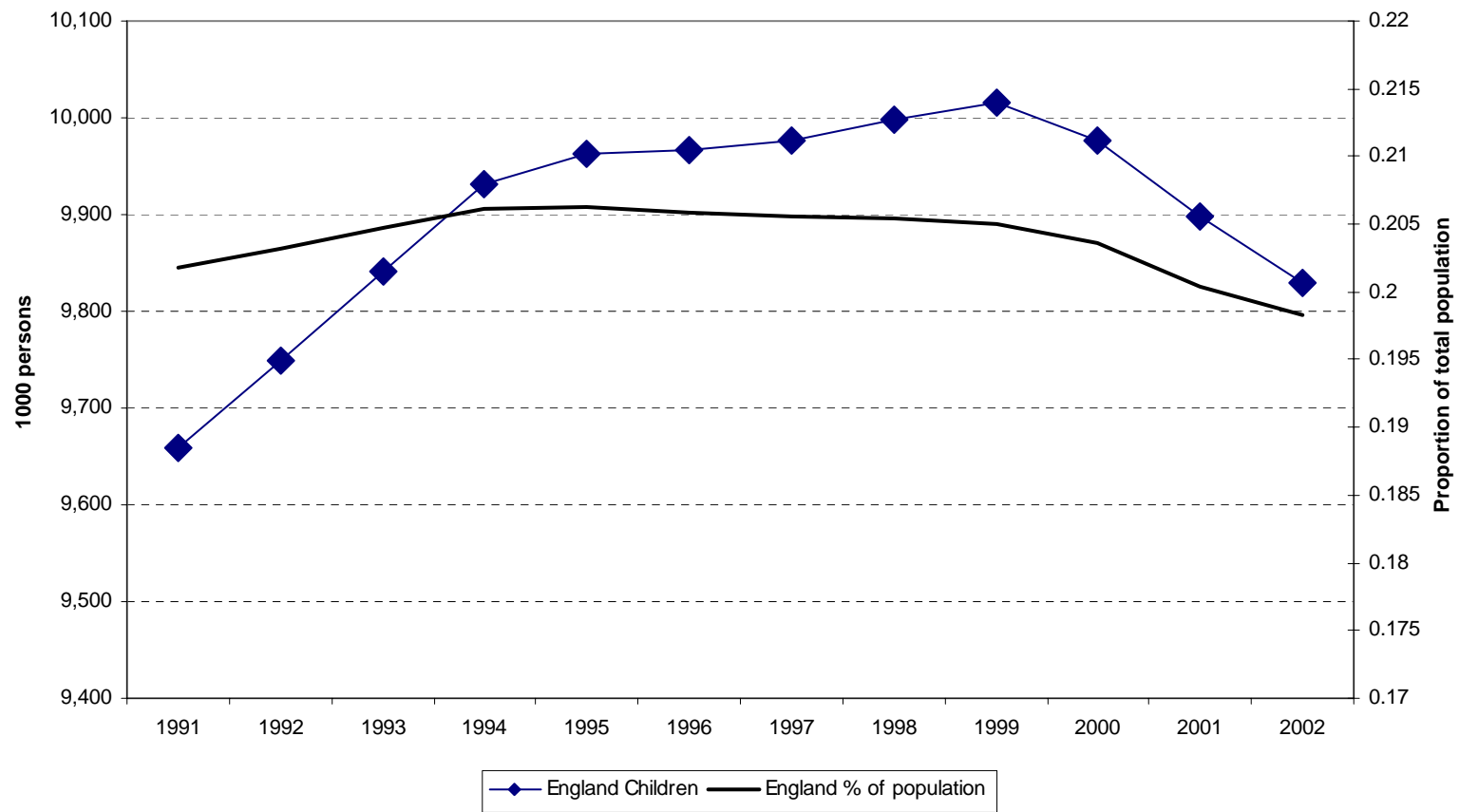


Figure 6.2 Numbers and Proportions of Children in Wales

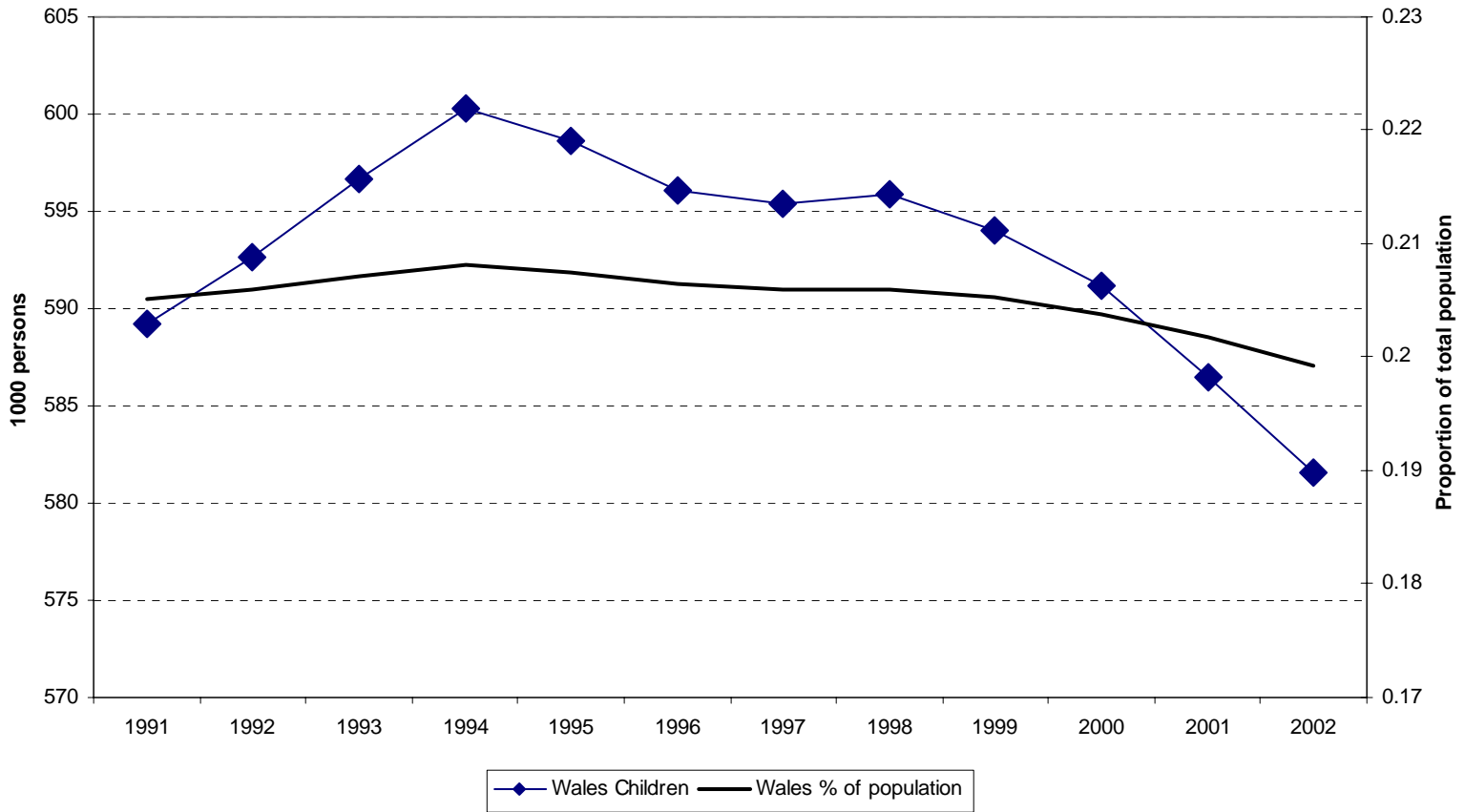


Figure 6.3 Numbers and Proportions of Children in Northern Ireland

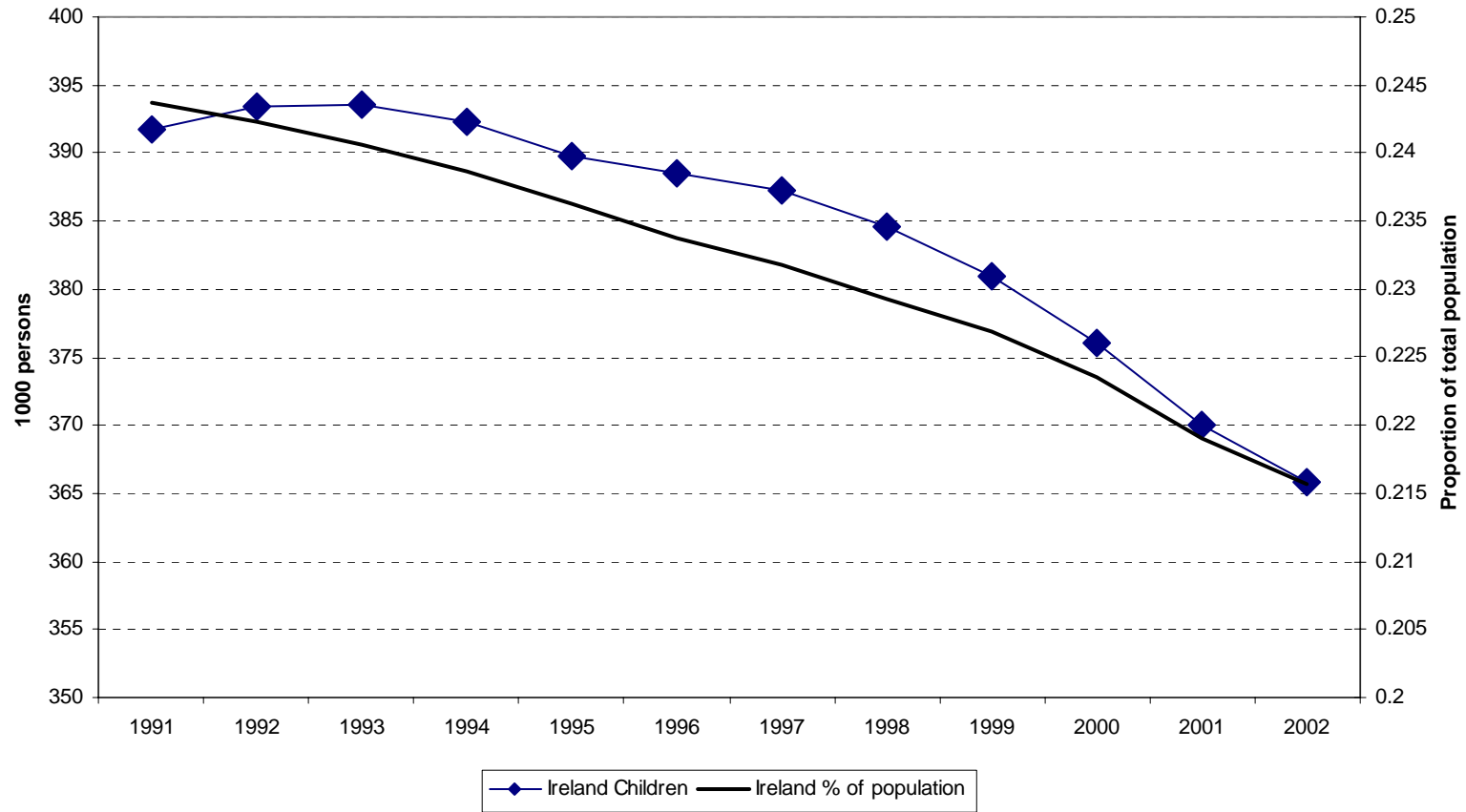


Figure 6.4 England: Numbers of Children Reported on the CIN Database in a Sample Week in February 2003

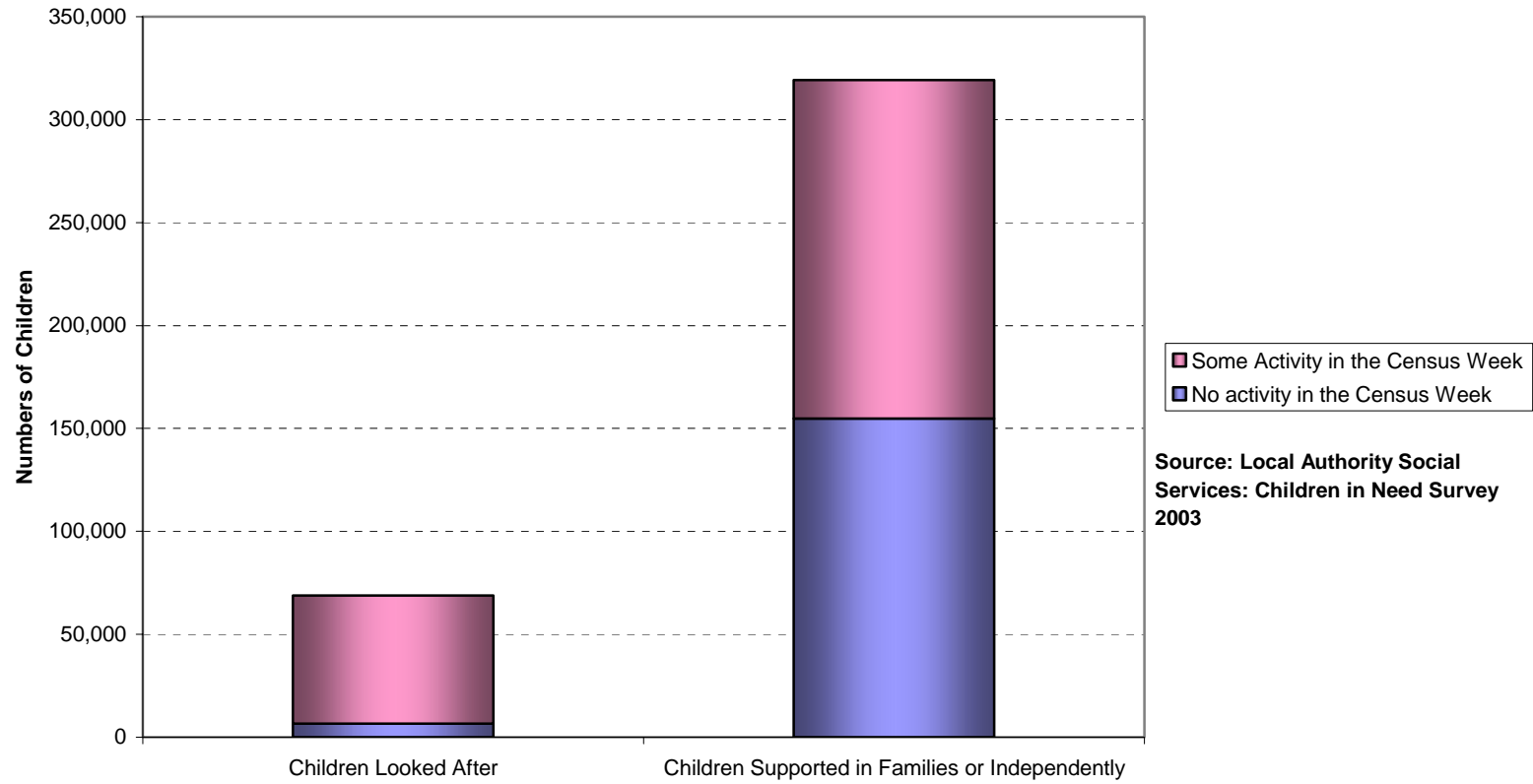
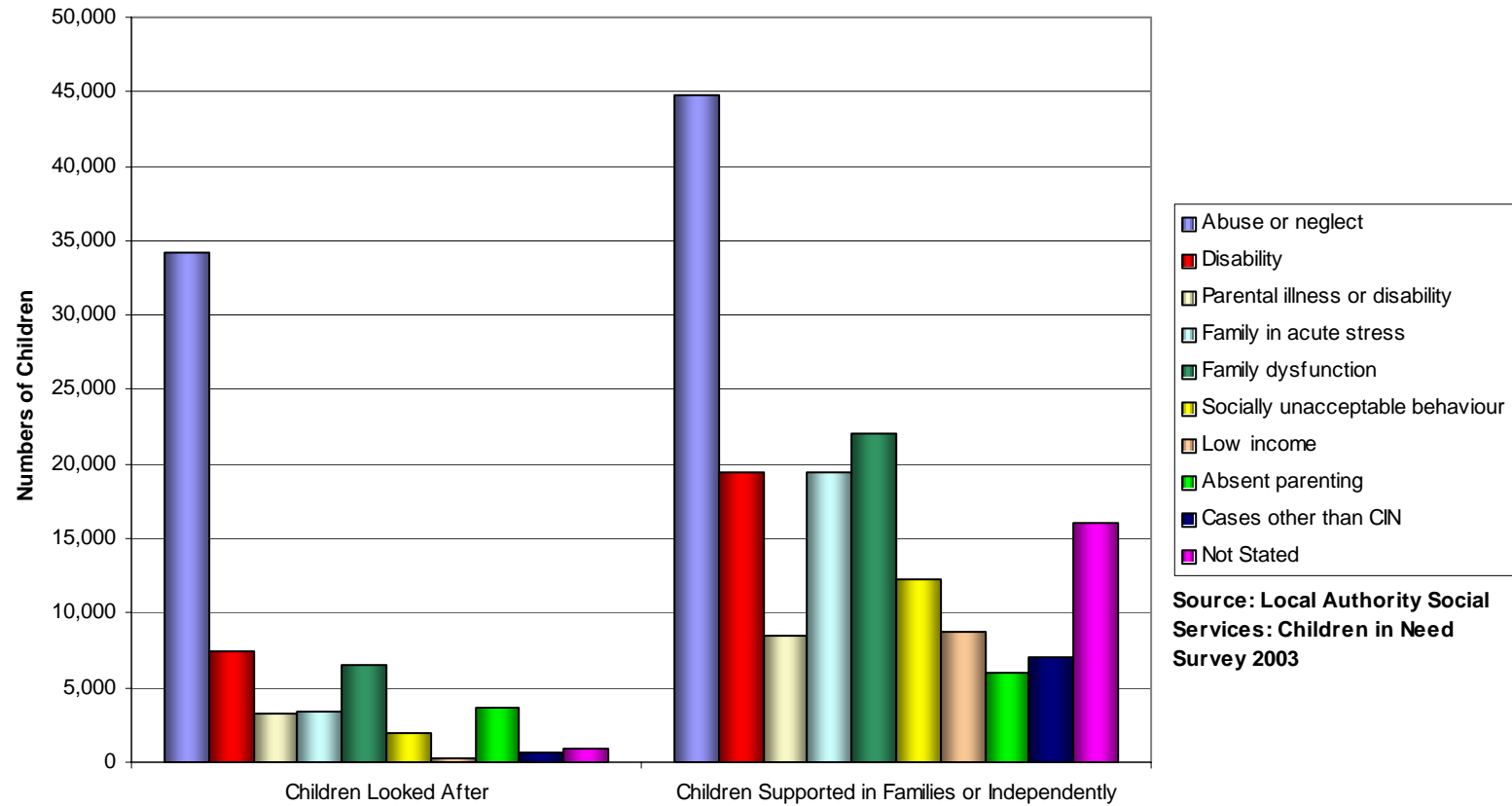
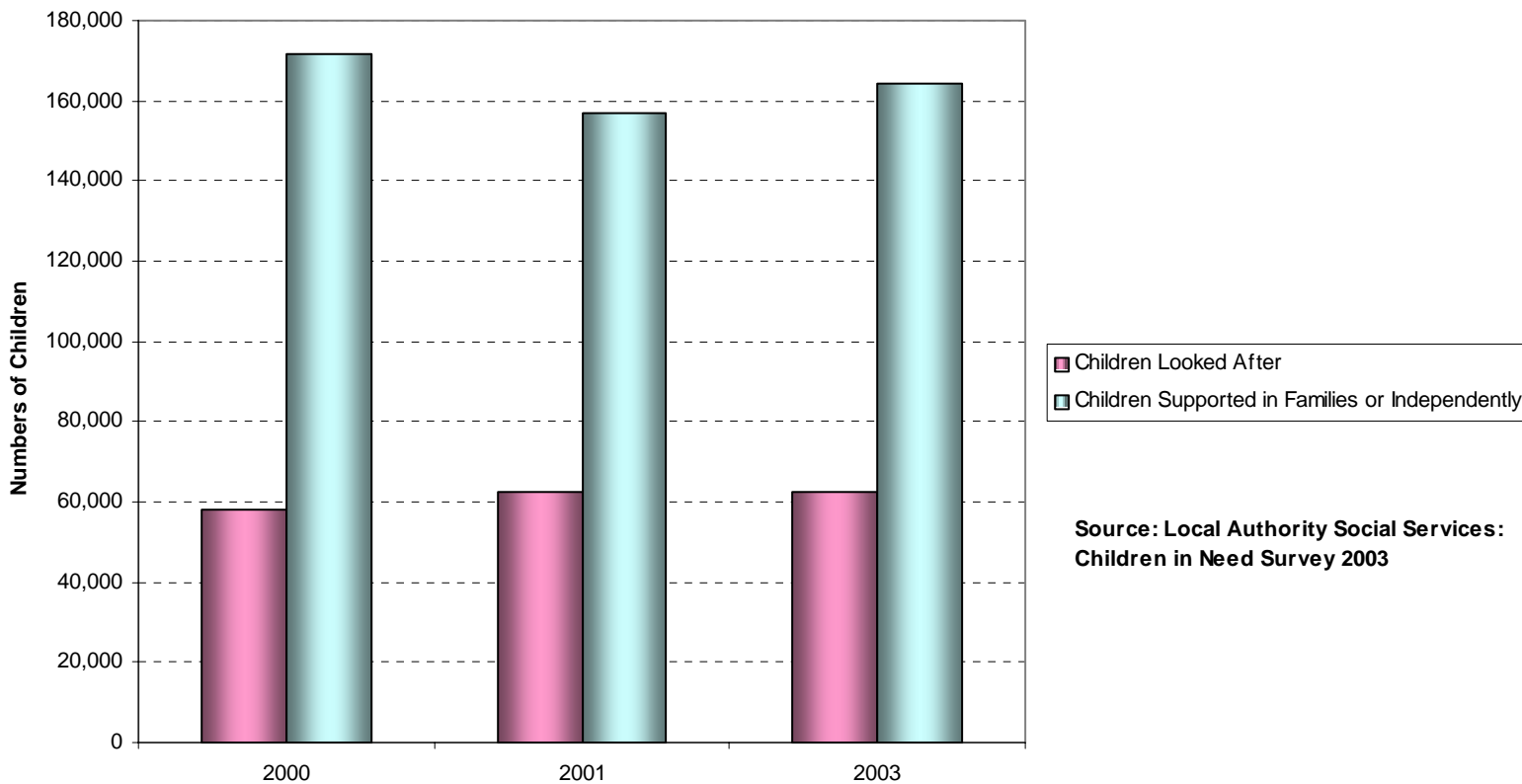


Figure 6.5 England: Distribution of Children by Category of Need Based on a Sample Week in February 2003



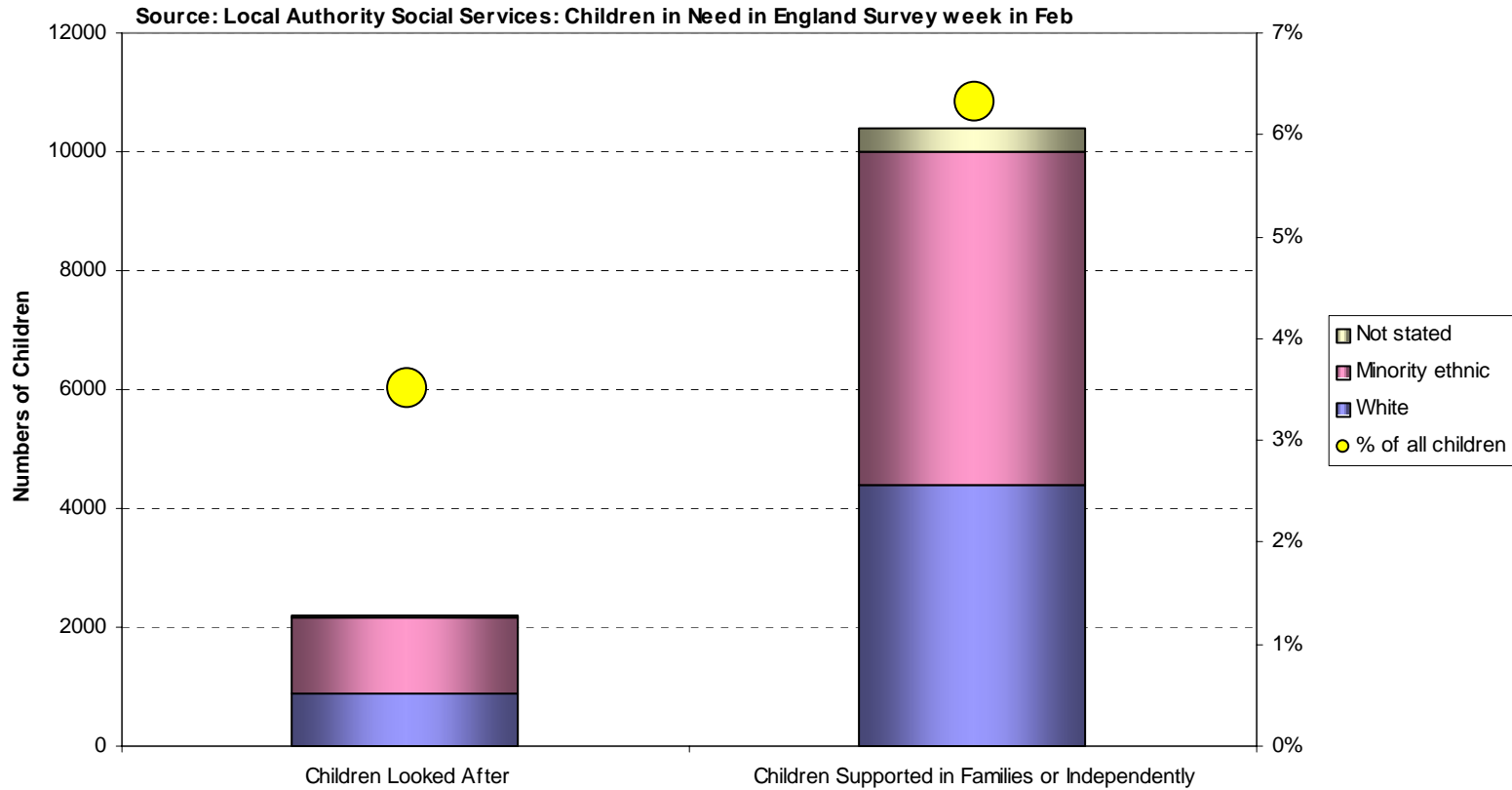
Source: Local Authority Social Services: Children in Need Survey 2003

Figure 6.6 England: Comparison of Numbers Receiving a Service in February 2000, September-October 2001 and February 2003



**Source: Local Authority Social Services:
Children in Need Survey 2003**

Figure 6.7 England: Numbers of Asylum Seeking Children in Need Based on a Sample Week in February 2003 by Ethnic Background



**Figure 6.8 Northern Ireland: Numbers of Episodes and Children Referred to Social Services
1998/1999 to 2000/2001**

Source: Department of Health, Social Services and Public Safety in Northern Ireland

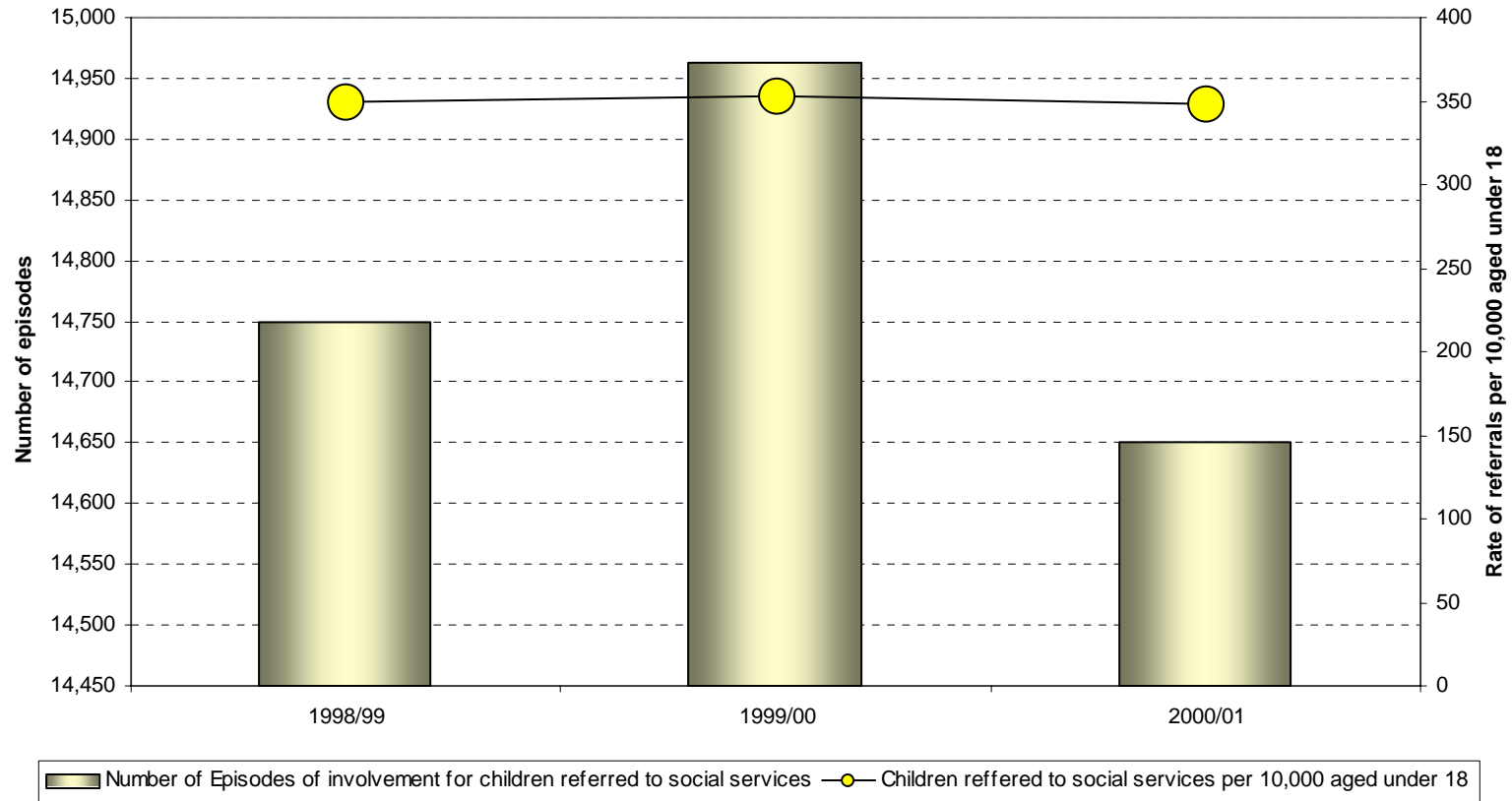


Figure 6.9 Northern Ireland: Reasons for Social Services Involvement - Percentage of Episodes of Involvement with Social Services During 1998/1999 to 2000/2001

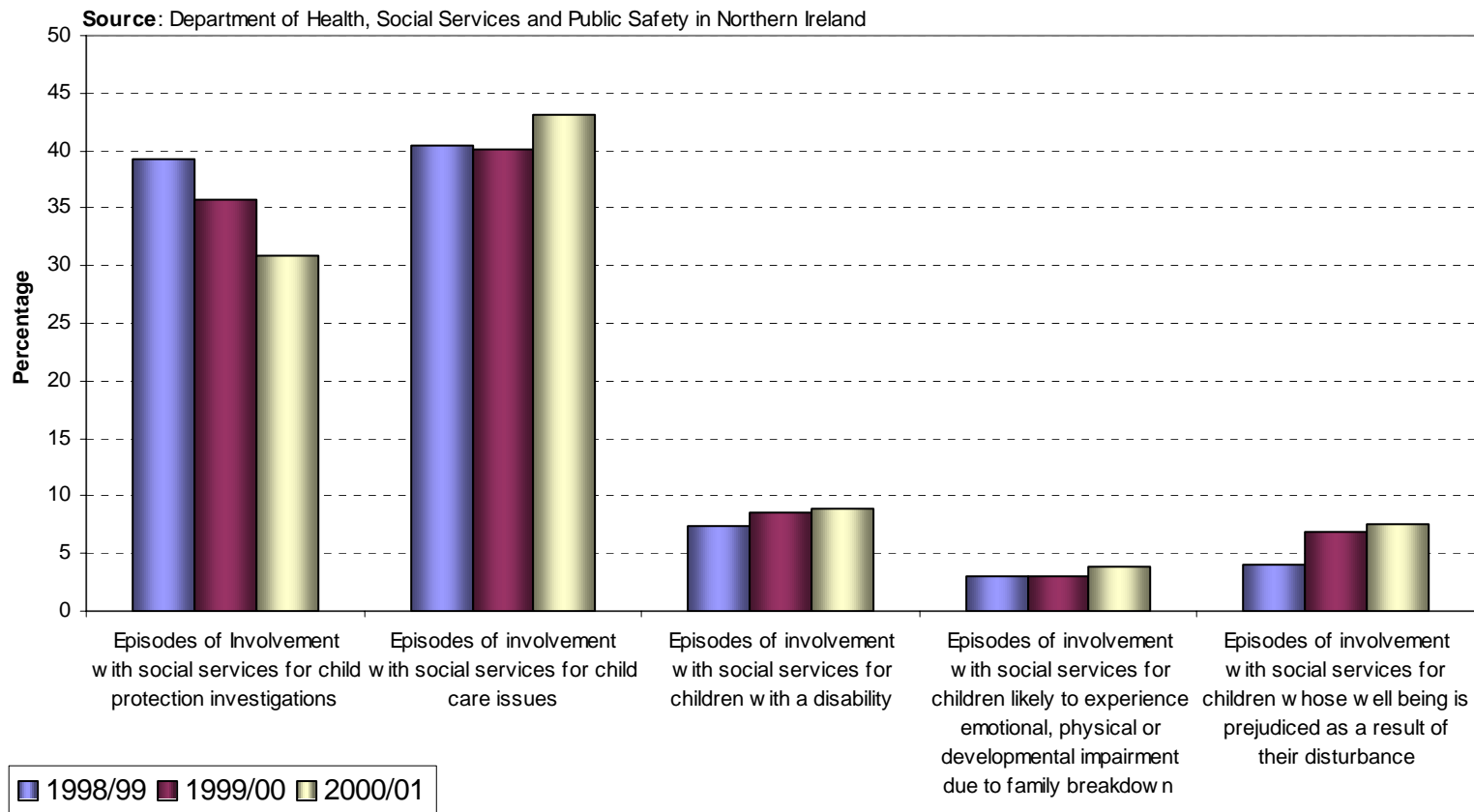


Figure 6.10 England and Northern Ireland: Rate of Children Looked After Per 10,000 Population Under 18 - 1999 to 2001

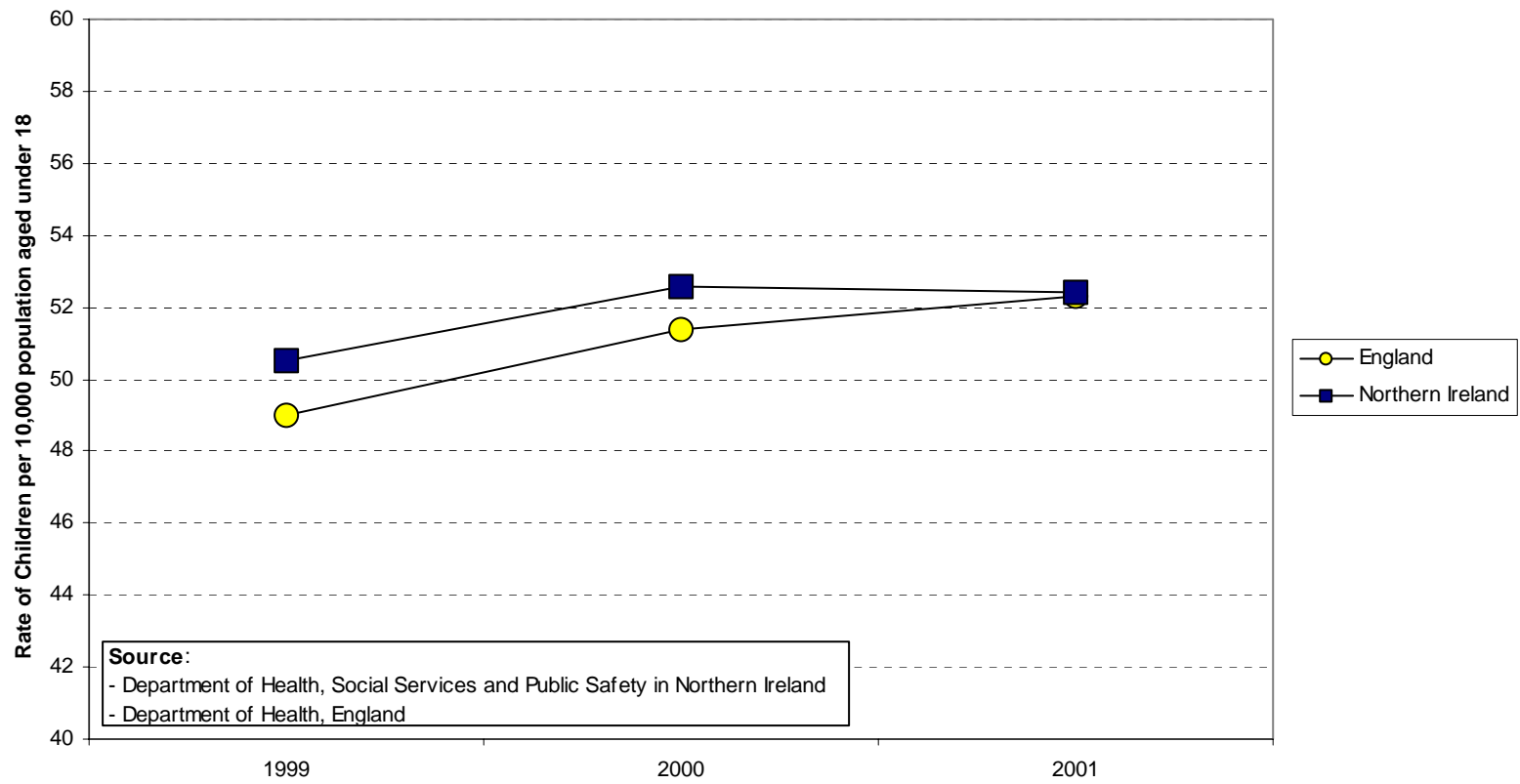


Figure 6.11 England: Legal Status and Placement of Children and Young People on Child Protection Registers 1999-2003

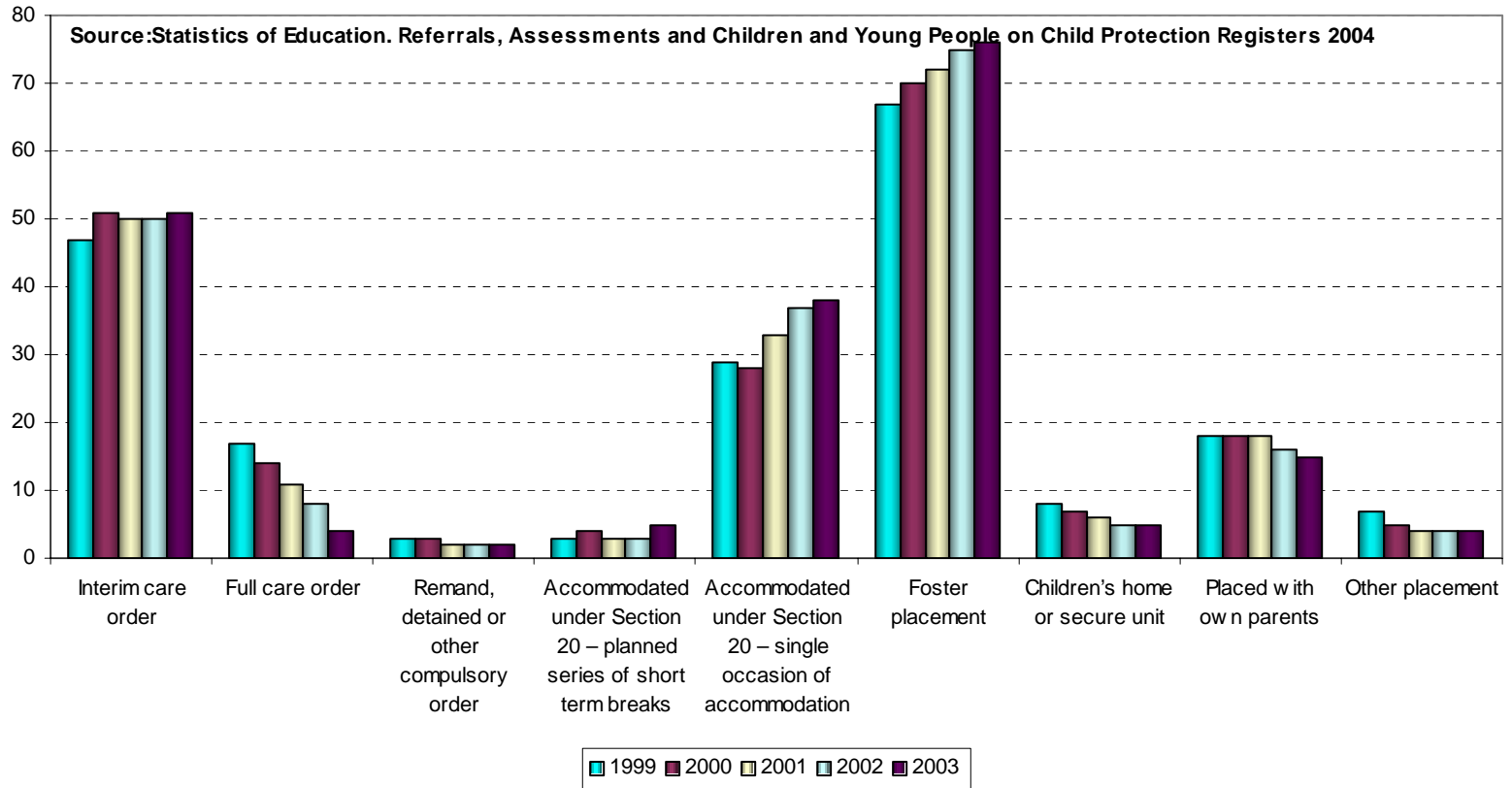


Figure 6.12 England: Re-registrations on the Child Protection Register - the Percentage of Children Registered During the Year on the Child Protection Register Who Had Been Previously Registered

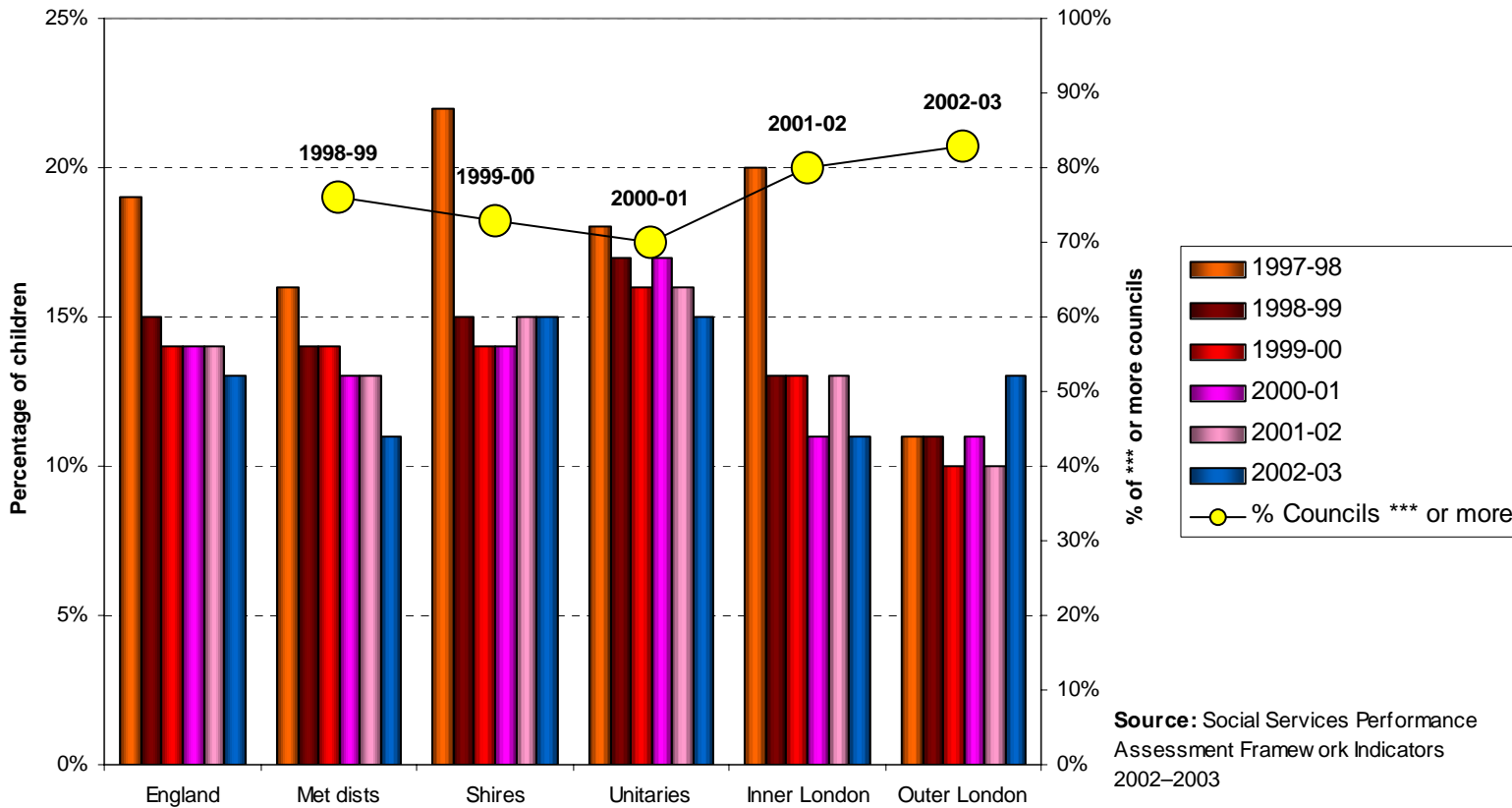
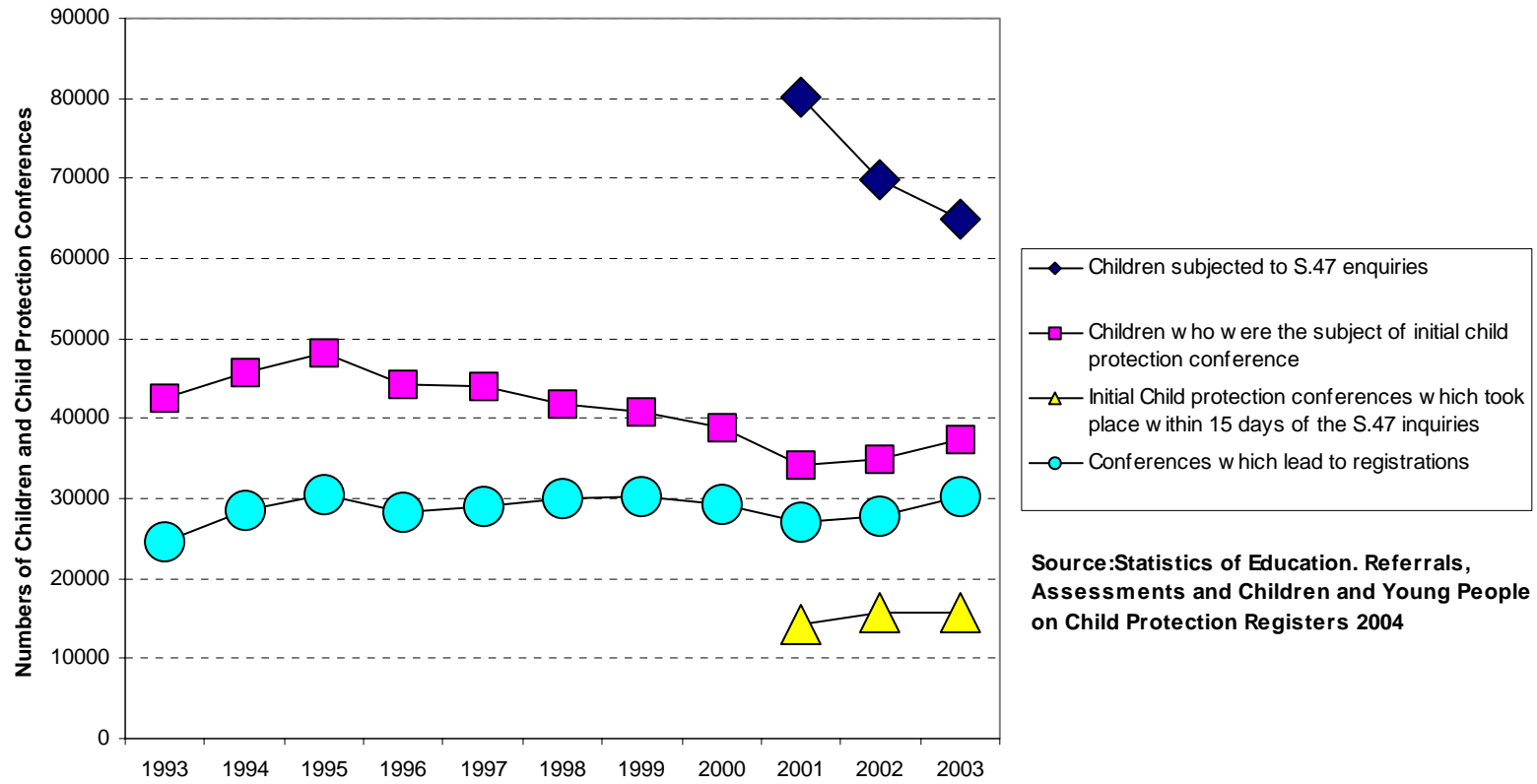


Figure 6.13 England: Numbers of Initial Child Protection Conferences Held During the Years Ending March 31 1993-2003, by Whether or Not They Led to Registrations



**Figure 6.14 Northern Ireland: Rate of Children (Per 10,000) on the Child Protection Register
1999 to 2001**

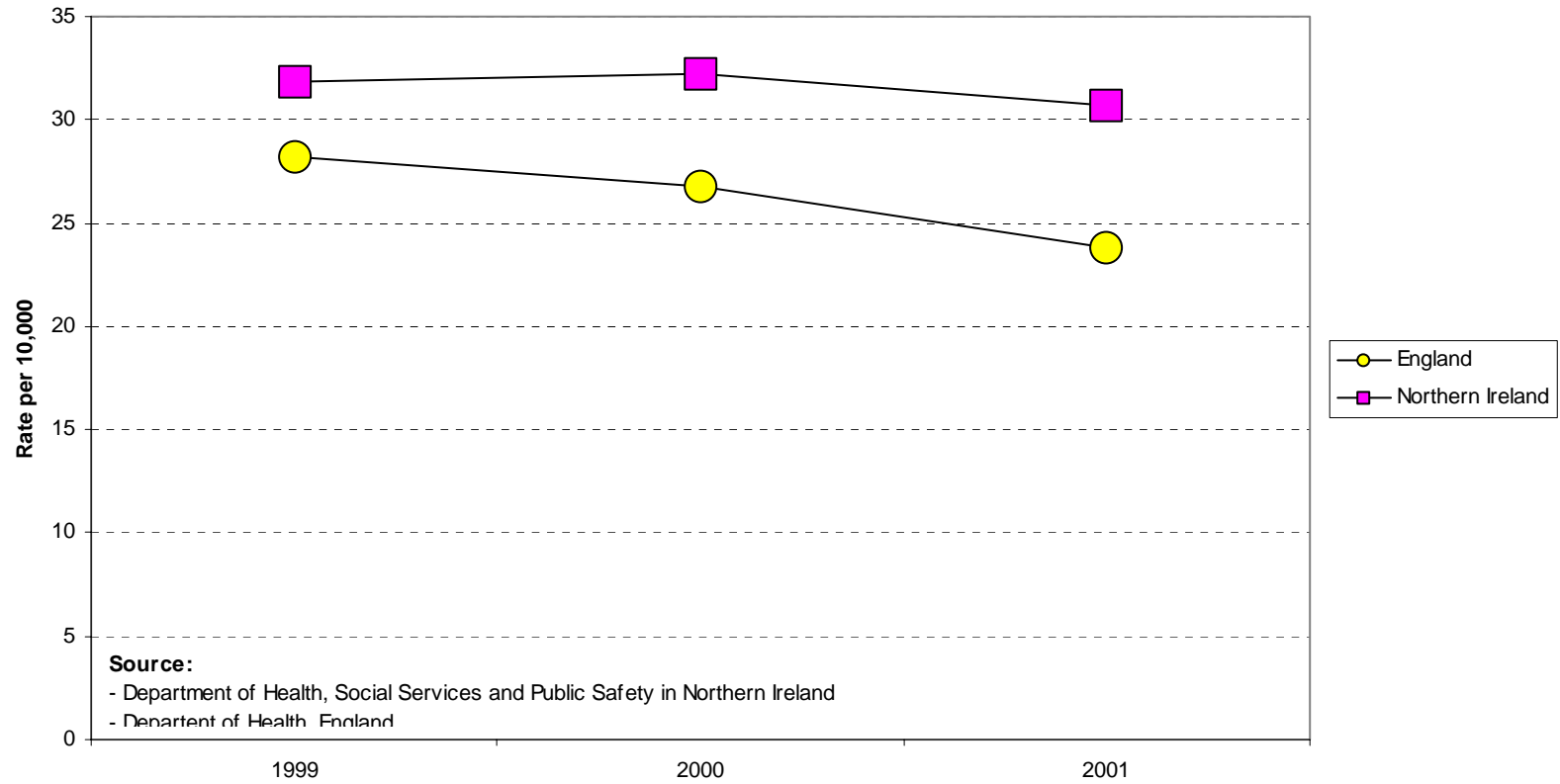


Figure 6.15 England and Northern Ireland: Child Protection Registrations as a Percentage of all Registrations by Category of Abuse 1998/1999 to 2000/2001

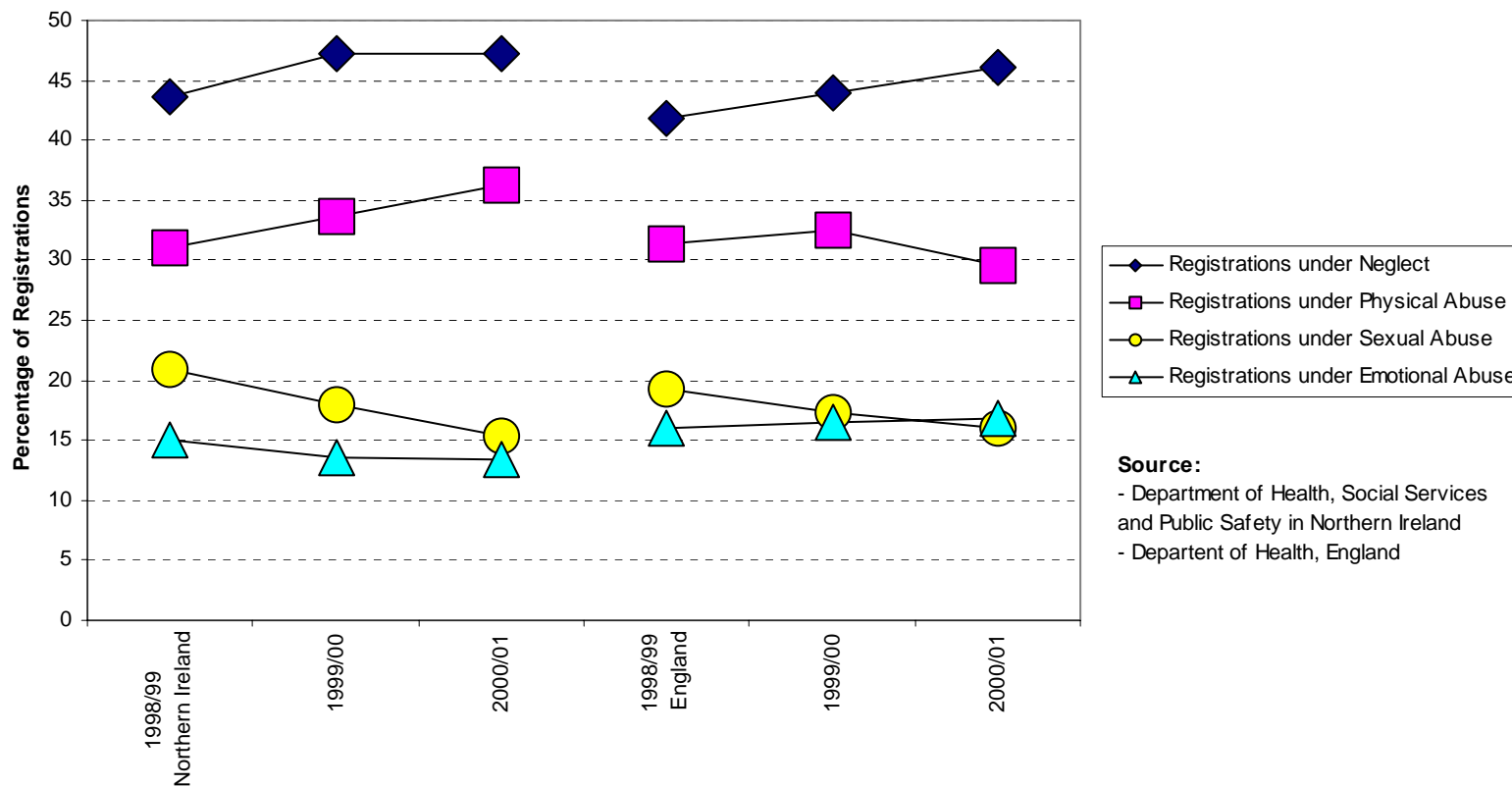


Figure 6.16 Wales: Numbers of Children on the Child Protection Register by Age and Sex 1990 - 2001

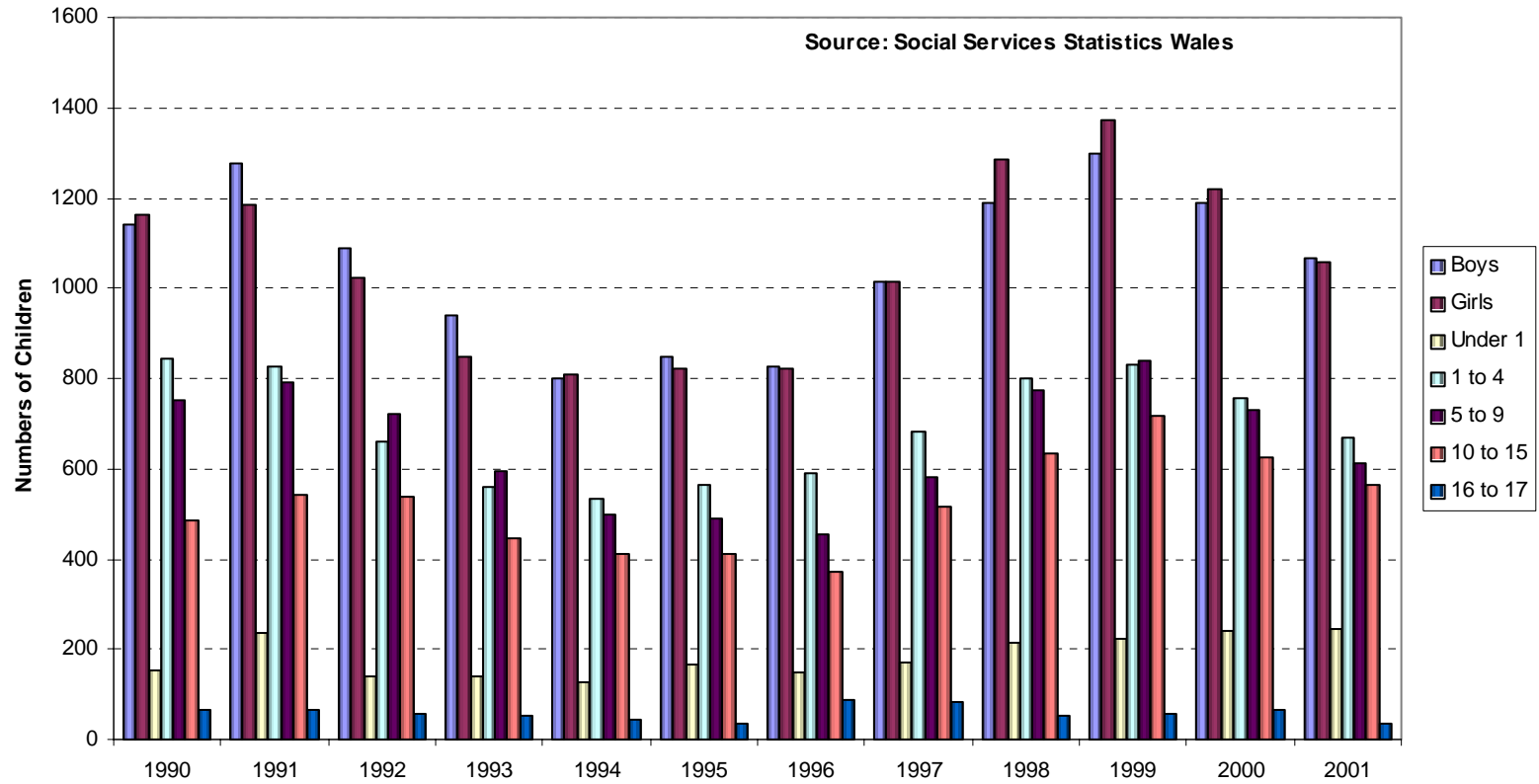
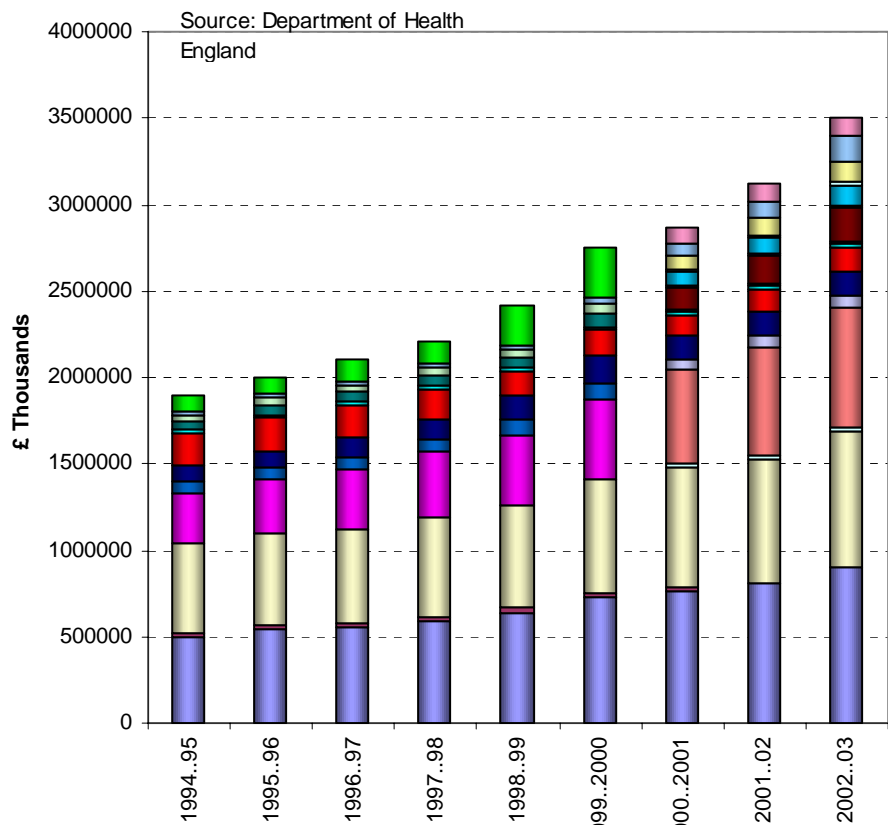


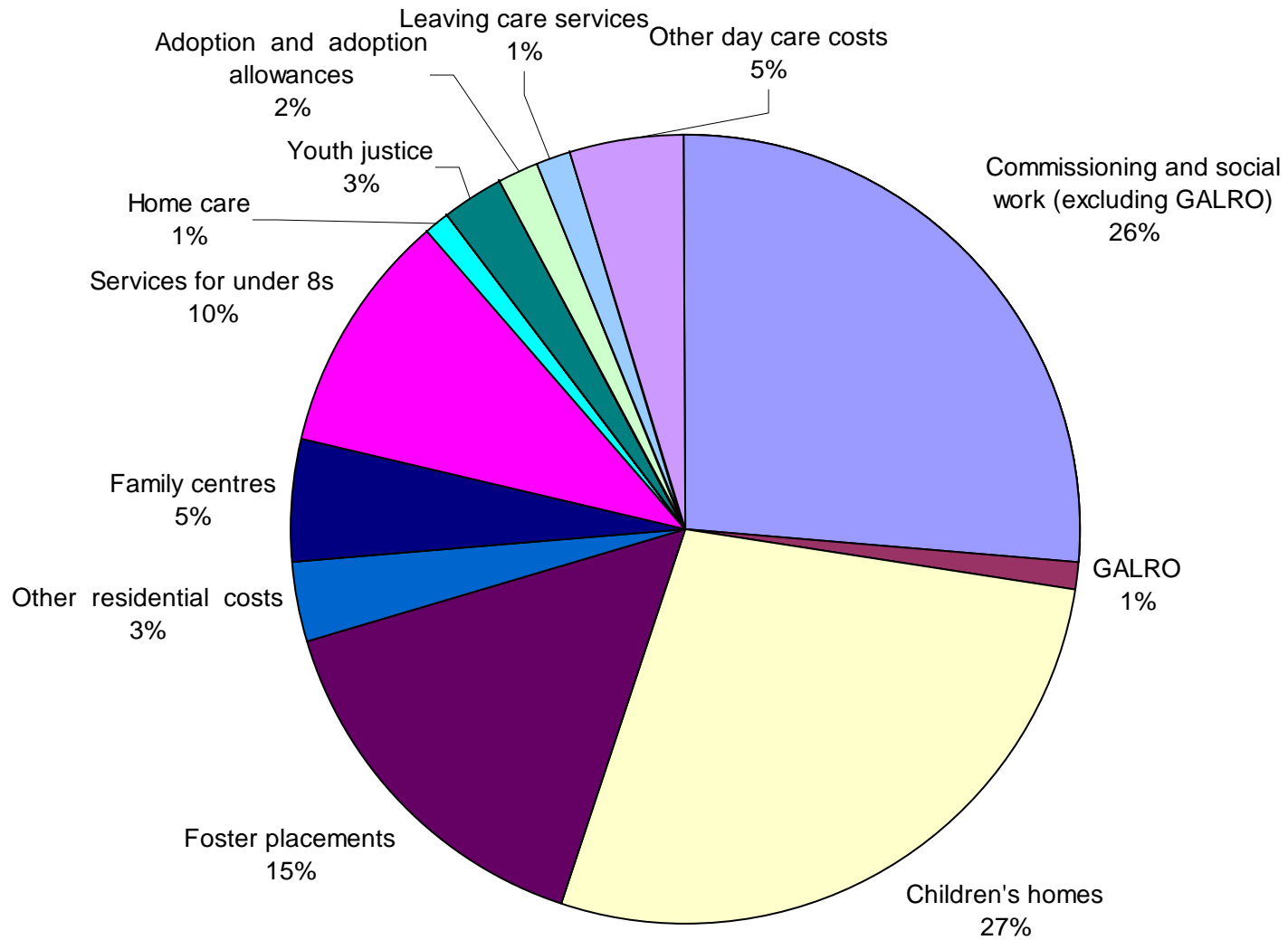
Figure 6.17 England: Gross Expenditure in Social Services



Source: Department of Health, England

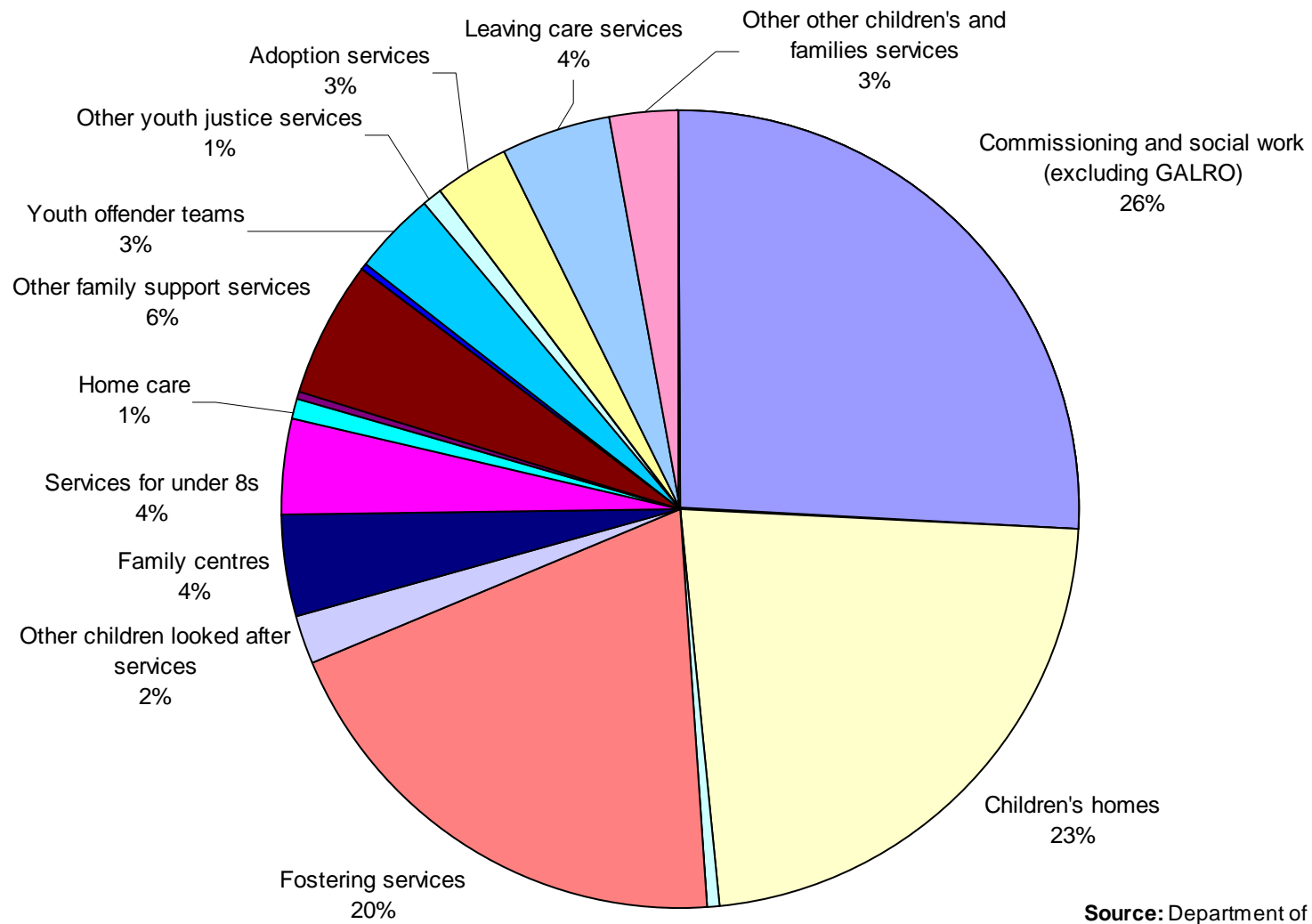
- Other day care costs
- Other other children's and families services
- Leaving care services
- Adoption services
- Adoption and adoption allowances
- Other youth justice services
- Youth offender teams
- Secure accommodation (justice)
- Youth justice
- Other family support services
- Equipment and adaptations
- Home care
- Direct payments
- Services for under 8s
- Family centres
- Other children looked after services
- Other residential costs
- Fostering services
- Foster placements
- Secure accommodation (welfare)
- Children's homes
- GALRO

Figure 6.18 England: Proportional Expenditure in Social Services for Children 1994-1995



Source: Department of Health England

Figure 6.19 England: Proportional Expenditure in Social Services for Children 2002-2003



Source: Department of Health England

Figure 6.20 England: Unit Cost of Children's Residential Care – Average Gross Weekly Expenditure Per Looked After Child in a Children's Home

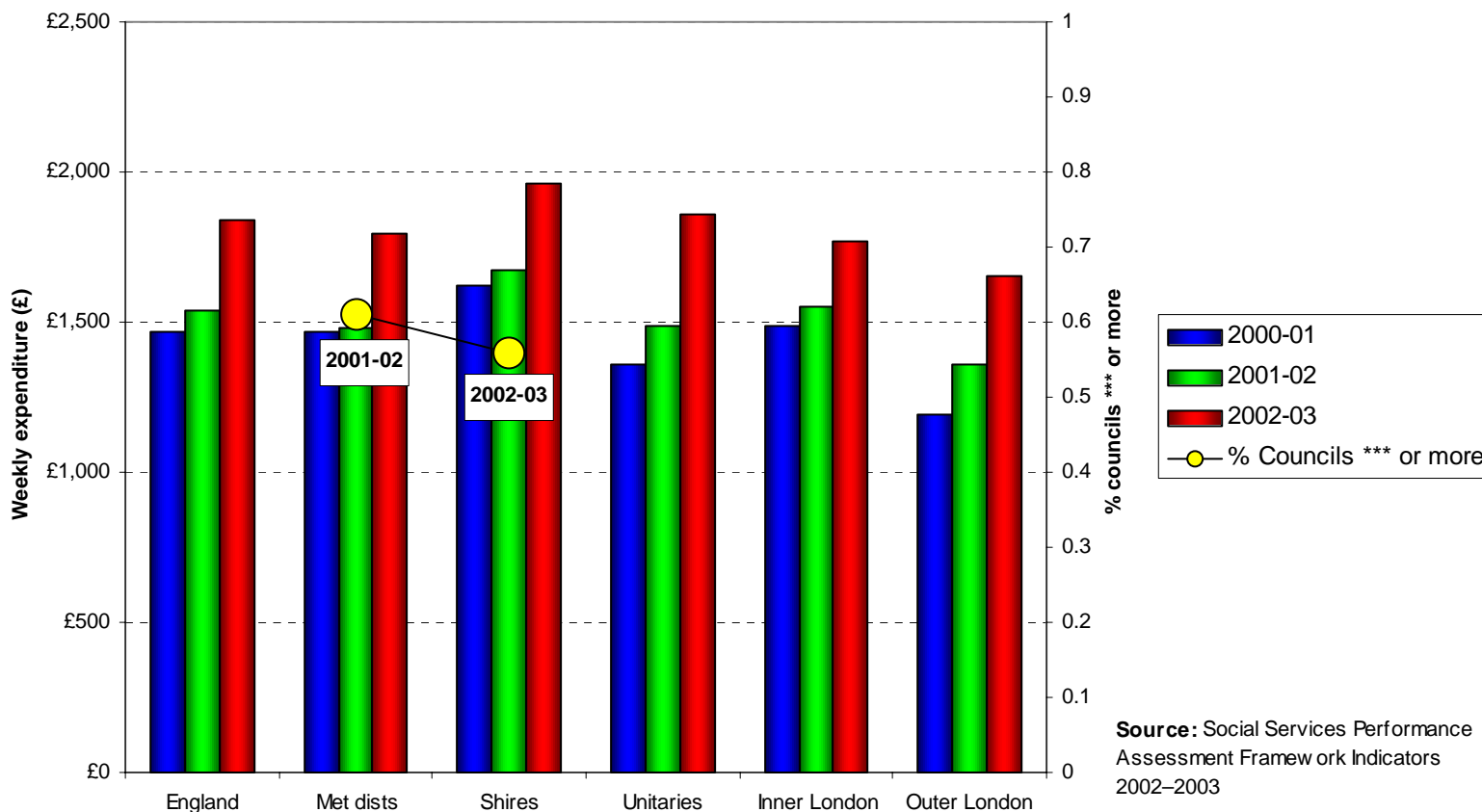


Figure 6.21 England: Unit Cost of Foster Care - Average Gross Weekly Expenditure Per Looked After Child in Foster Care

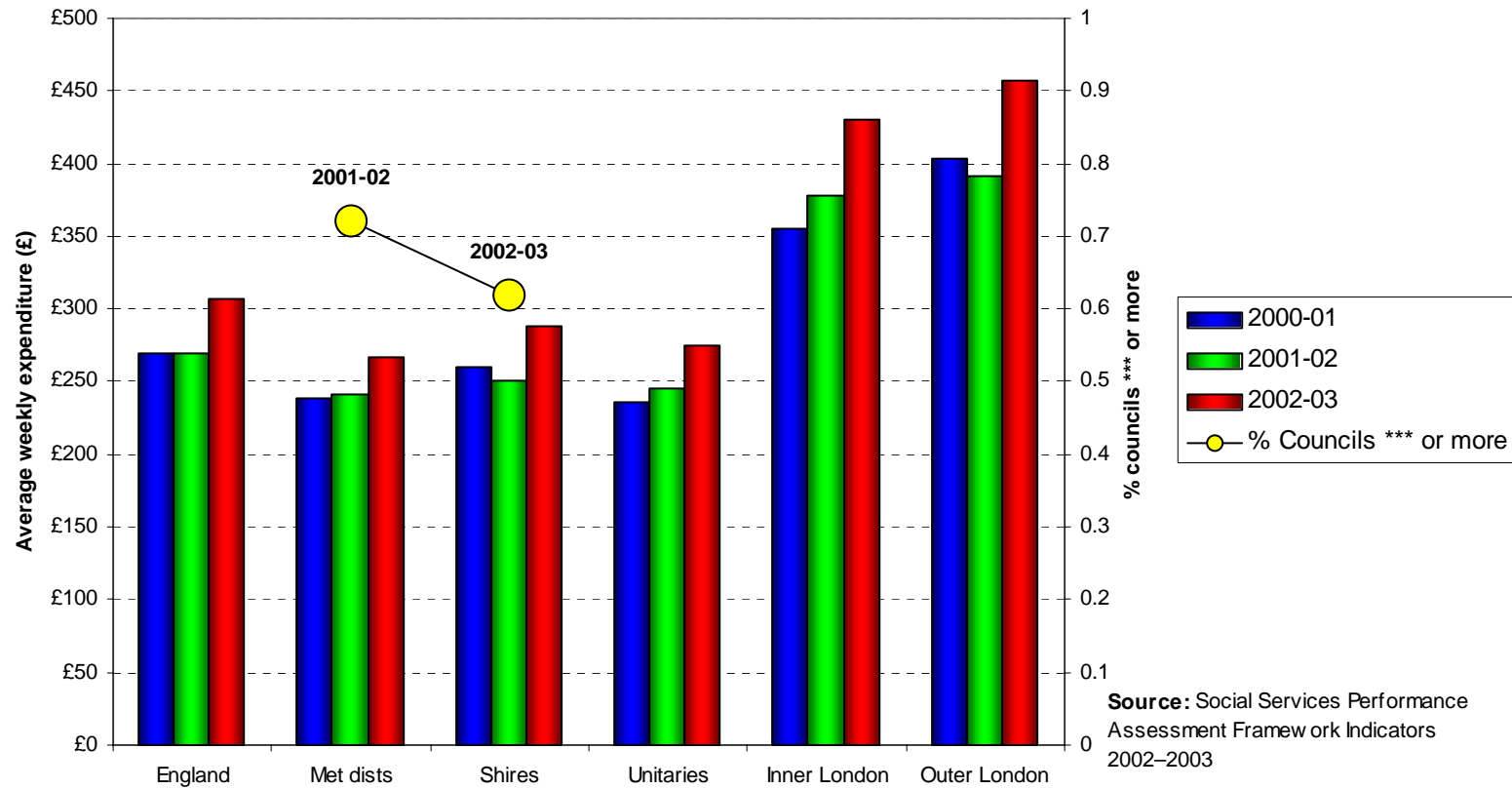


Figure 6.22 England: Relative Spend on Family Support - Gross Expenditure on Children in Need but Not Looked After, as a Percentage of Gross Expenditure on all Children's Services

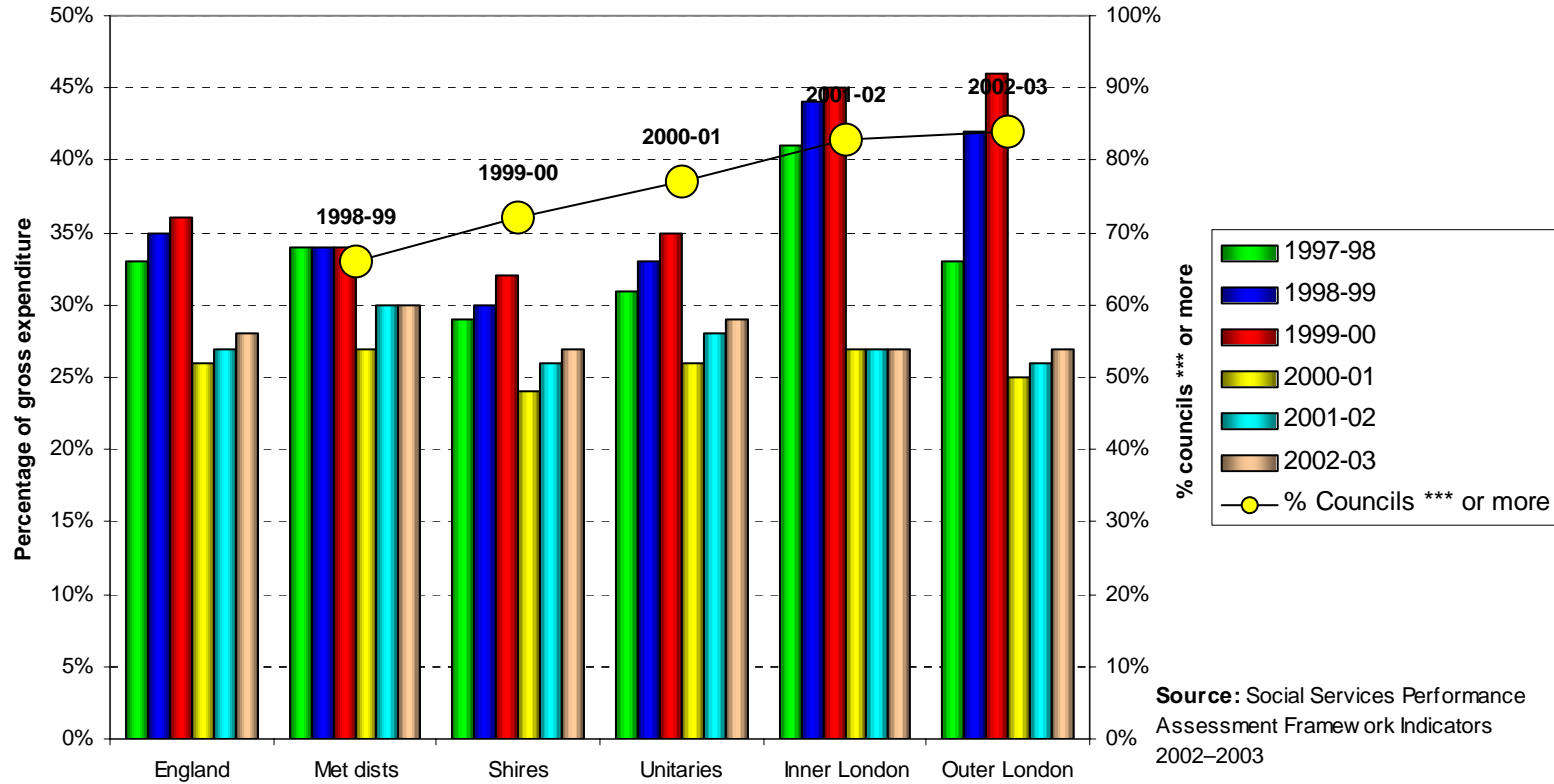


Figure 6.23 England: Total Weekly Costs as Reported on the CIN Database Based on a Sample Week in February 2003

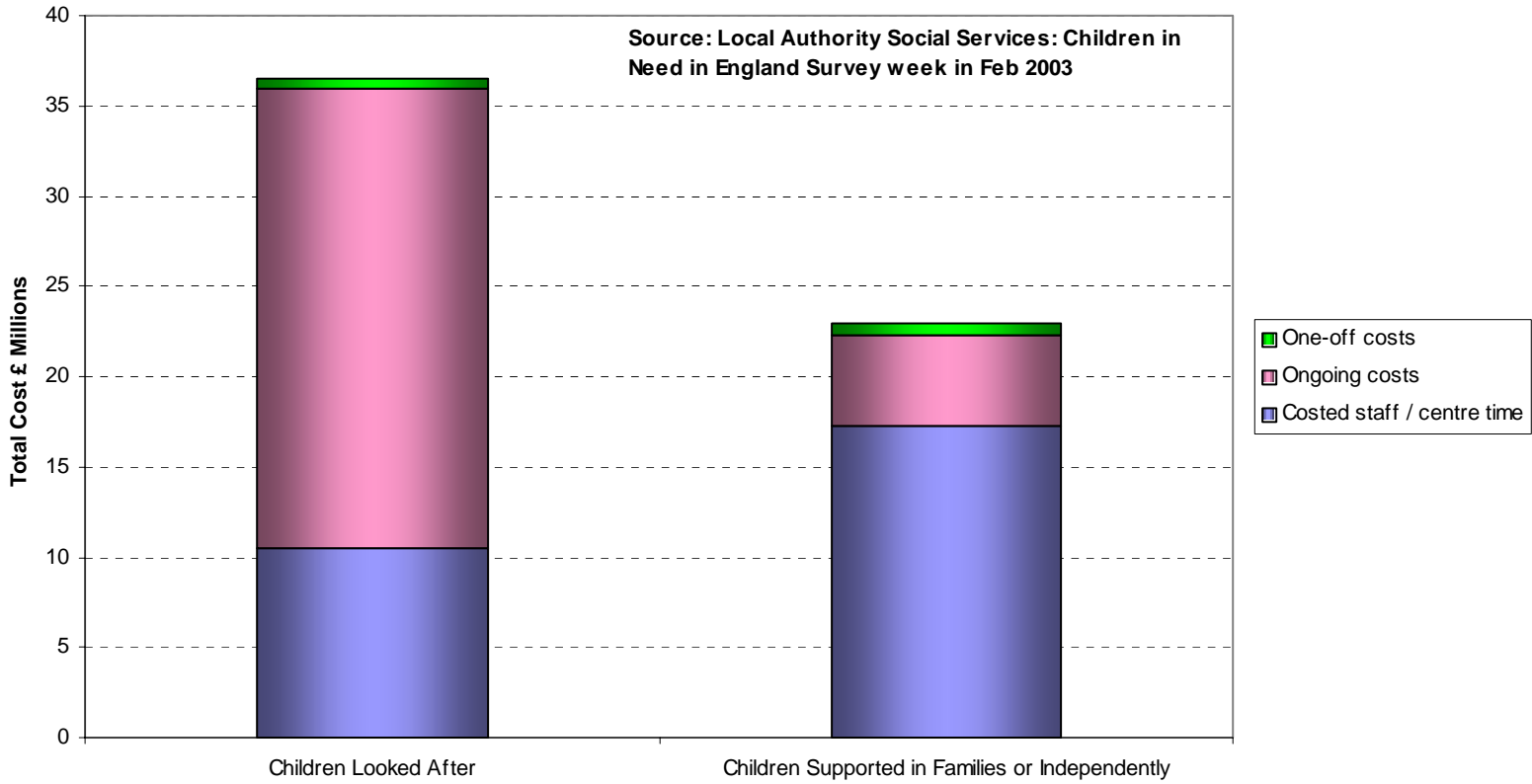


Figure 6.24 England: Average Cost (£ Per Week) Per Child Receiving a Service Based on a Sample Week in February 2003

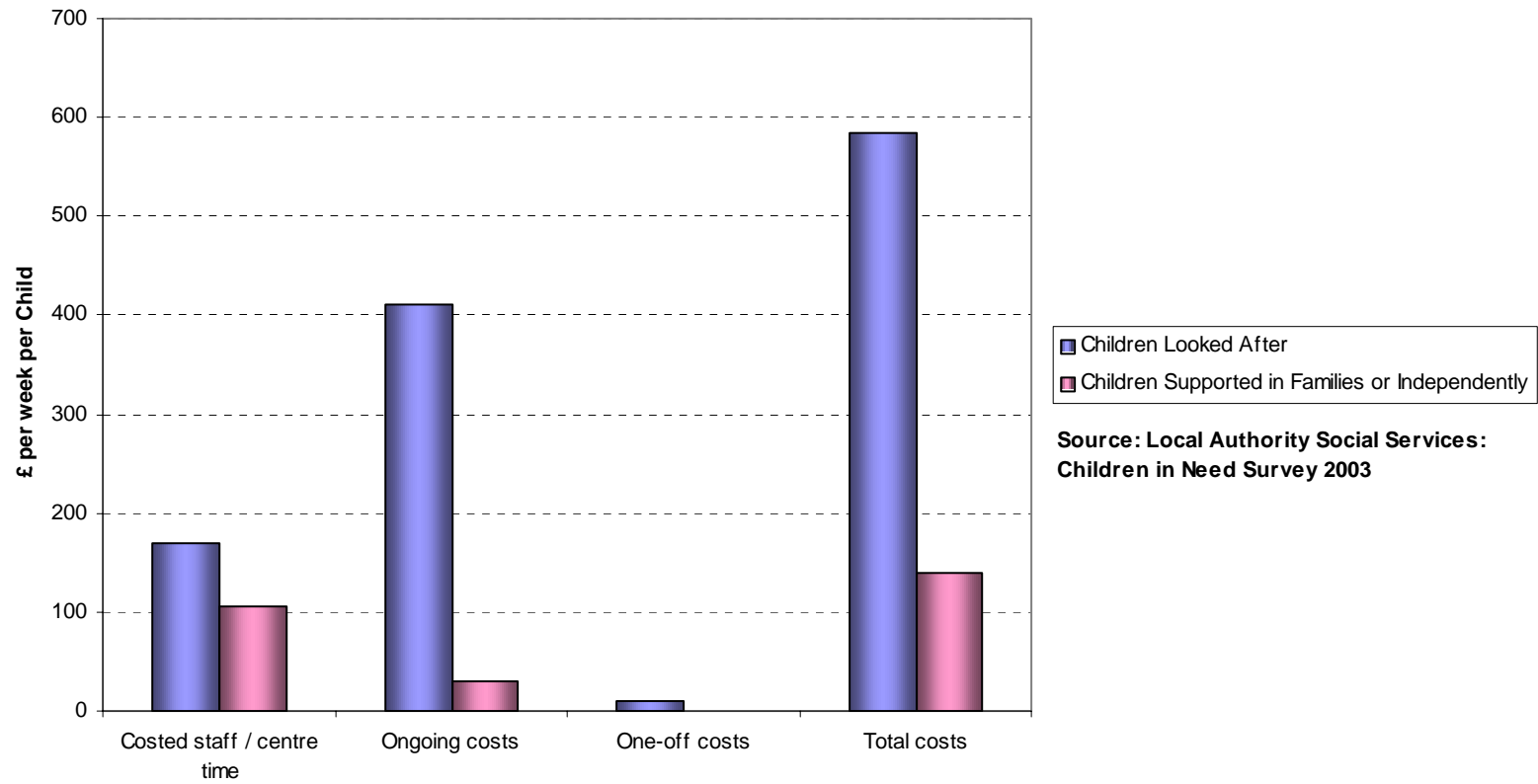


Figure 6.25 England: Average Cost (£ Per Week) Per Child Children Supported in Families or Independently by Age and Sex Based on a Sample Week in February 2003

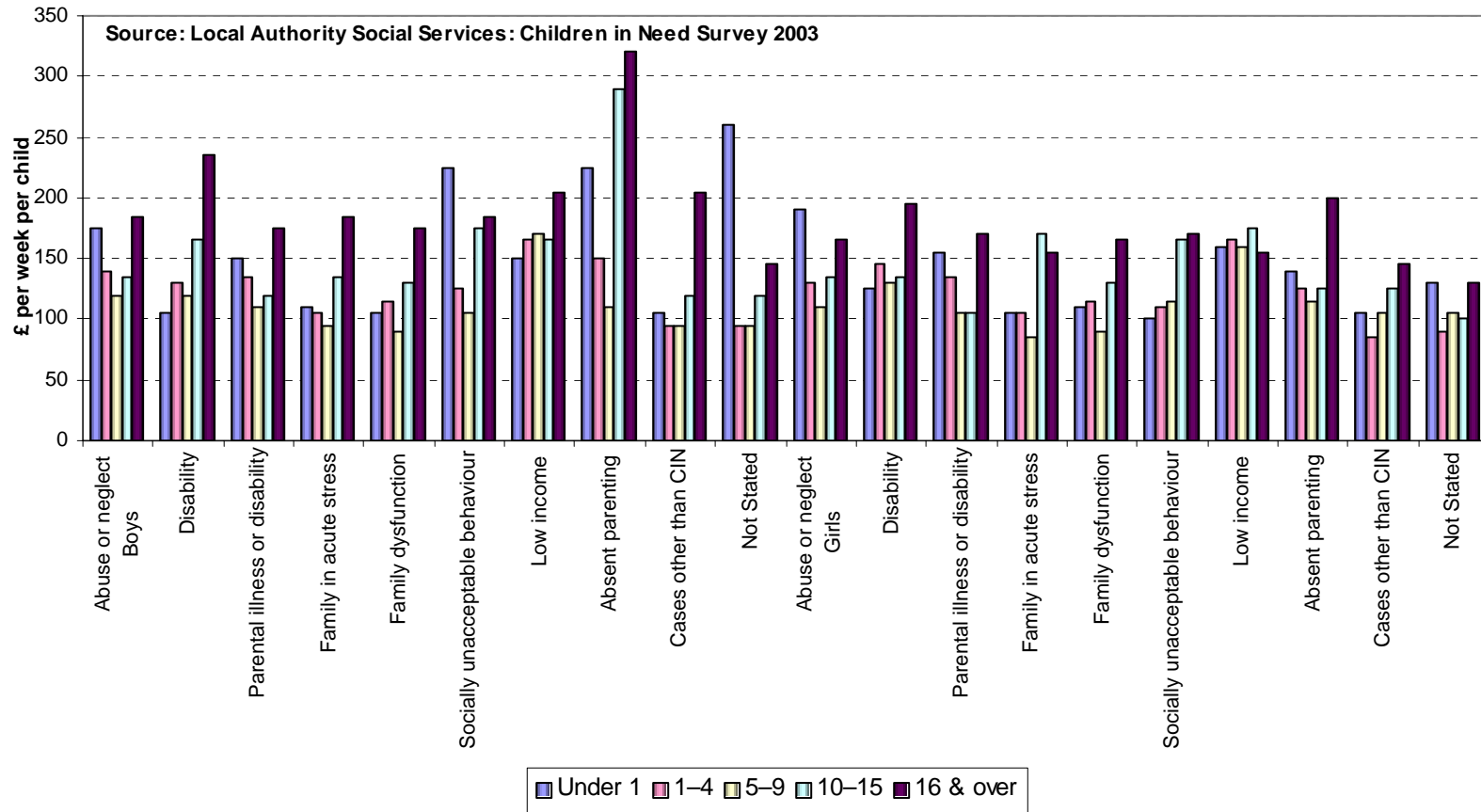


Figure 6.26 England and Northern Ireland: Per Capita Expenditure and Percentage of PSS Expenditure on Family and Childcare 1998/1999 to 2000/2001

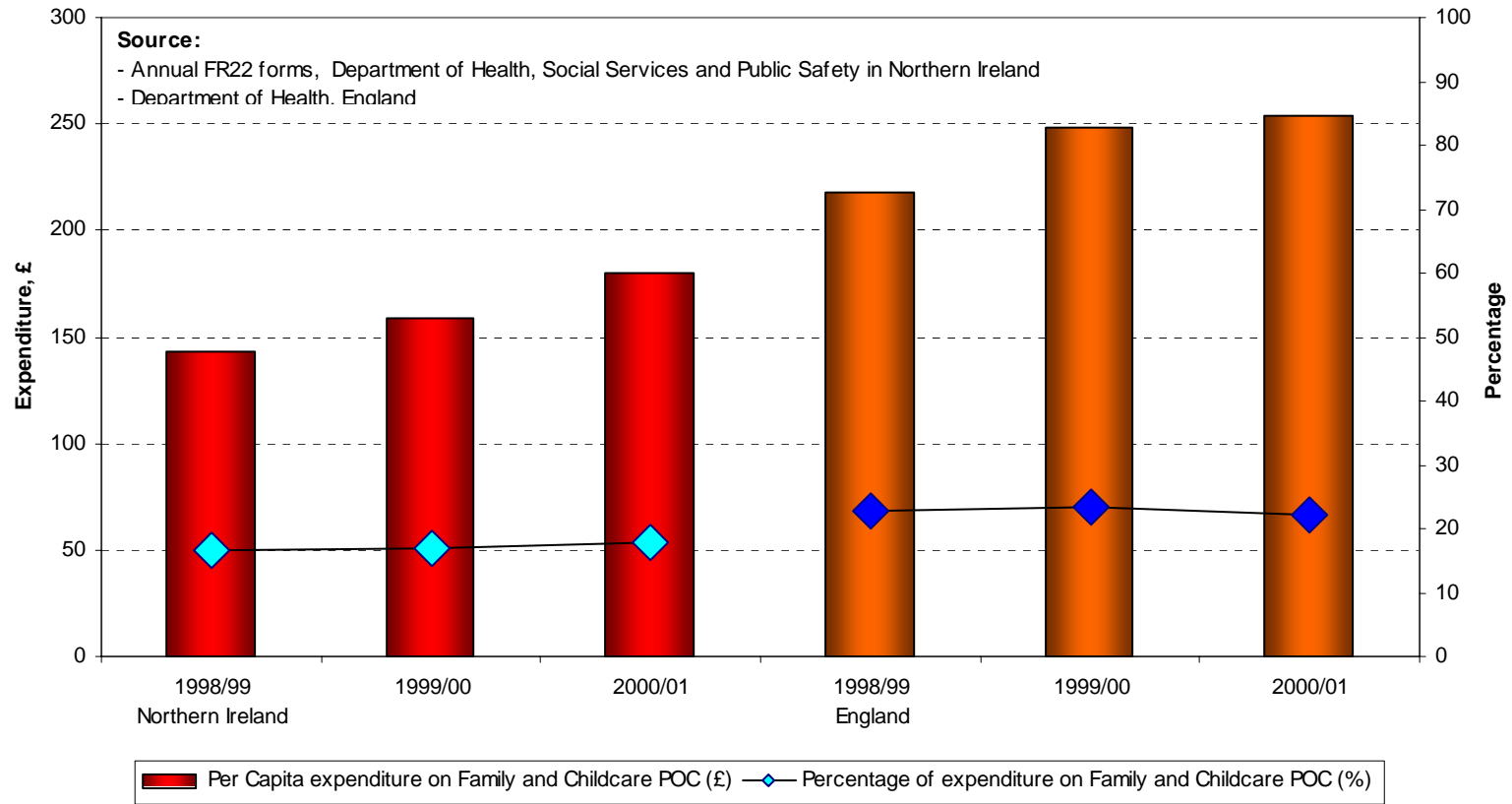


Figure 6.27 Wales: Expenditure on Personal Social Services for Children 2000-2001 to 2002-2003

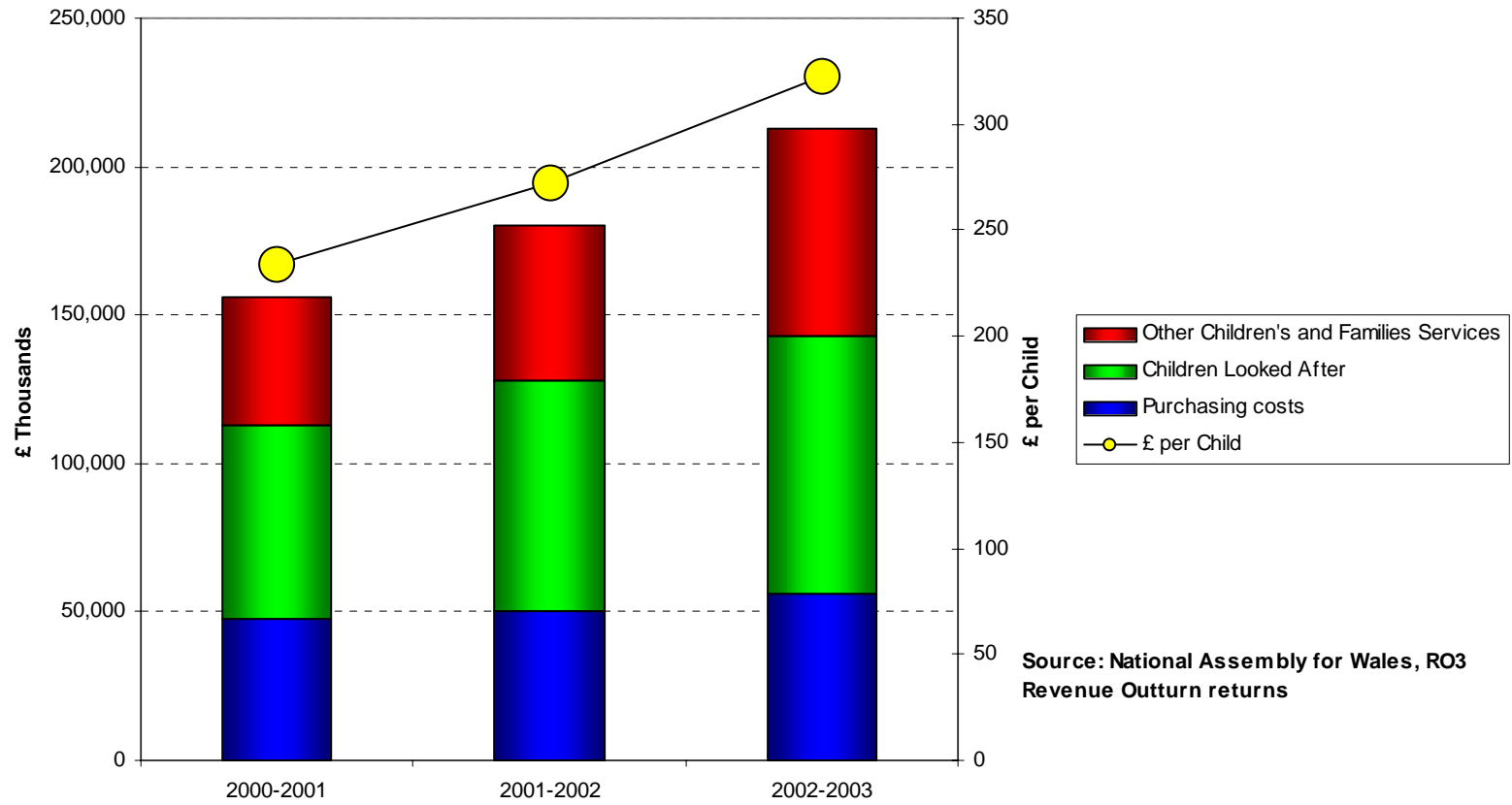


Figure 6.28 England: Duration of Final Period of Care During the Years Ending 31 March 1999 to 2003

Source: Department for Education and Skills

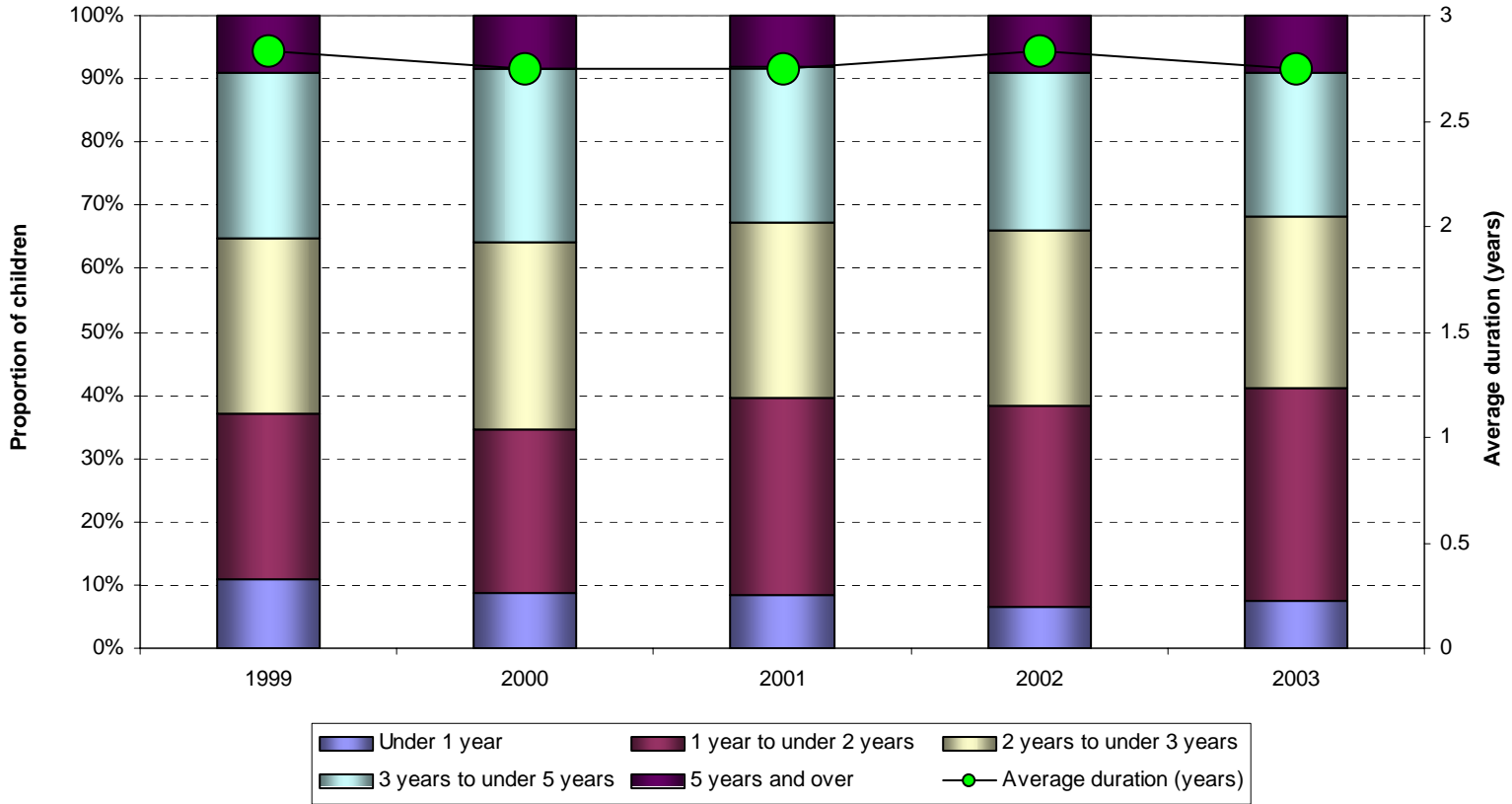


Figure 6.29 England and Northern Ireland: Percentage of Looked After Children in Residential or Foster Care 1999 to 2001

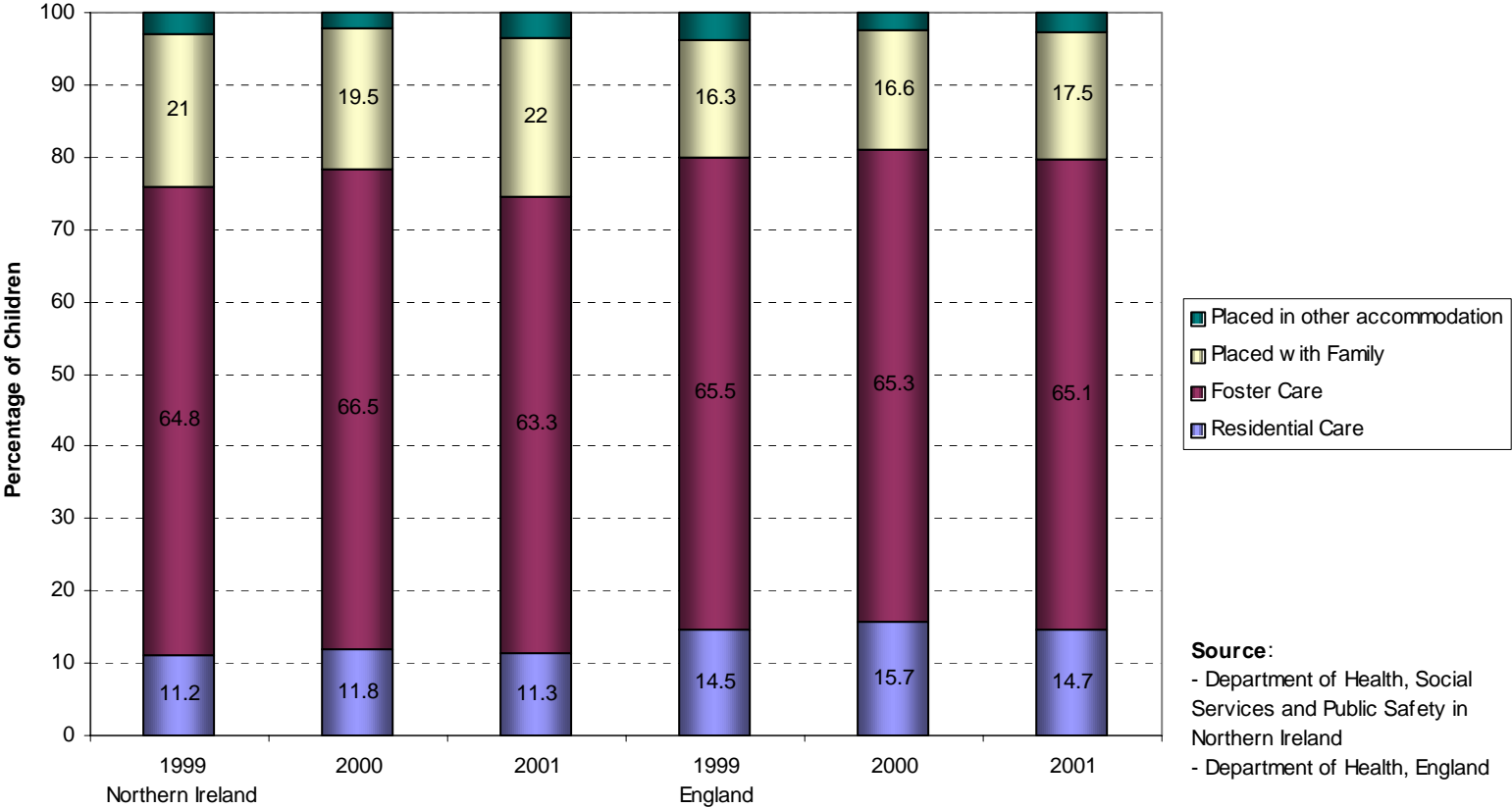


Figure 6.30 Wales: Numbers of Children Looked After by Local Authorities by Placement 1980 - 2001

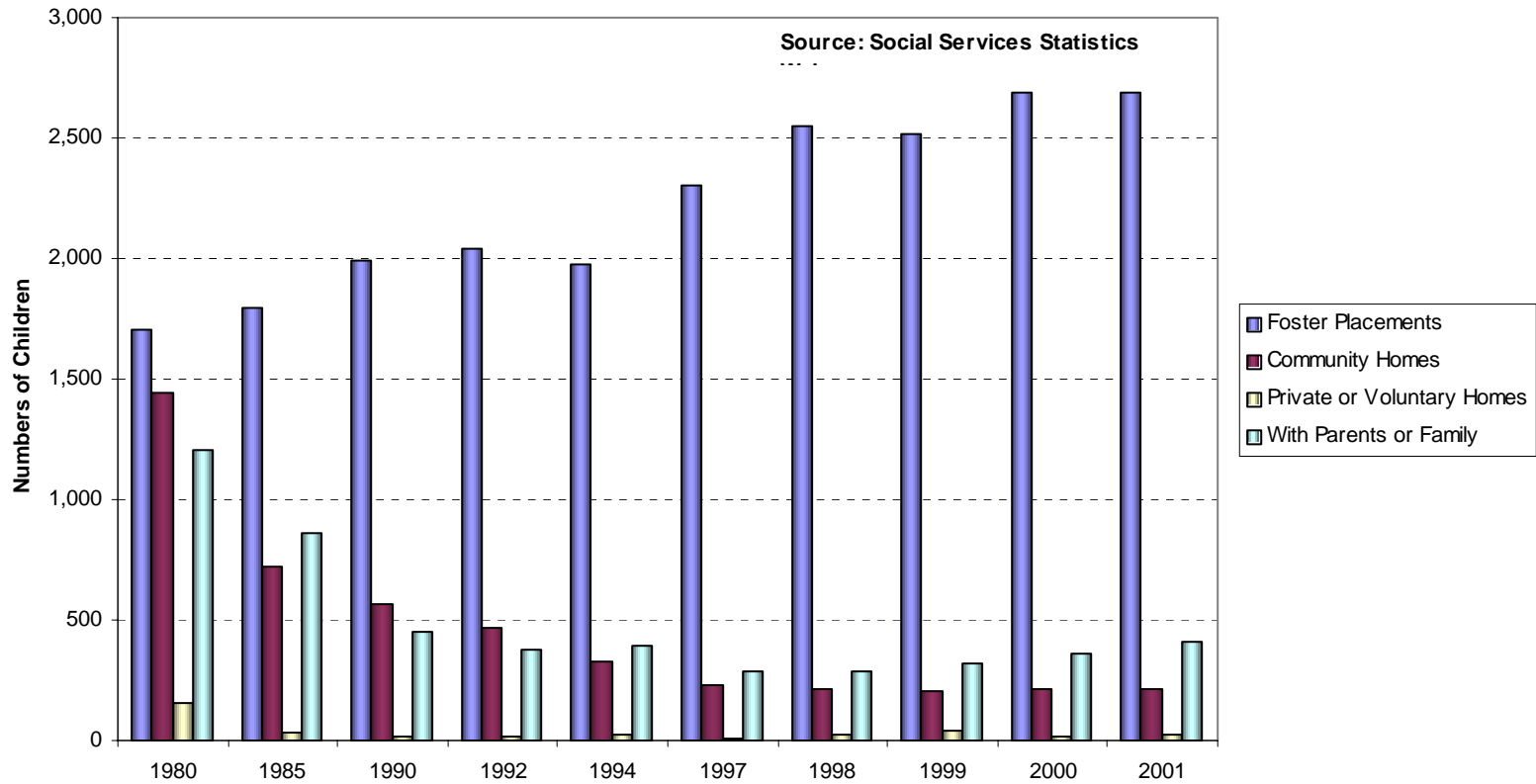


Figure 6.31 Wales: Numbers of Children in Local Authority Homes 1980-2001

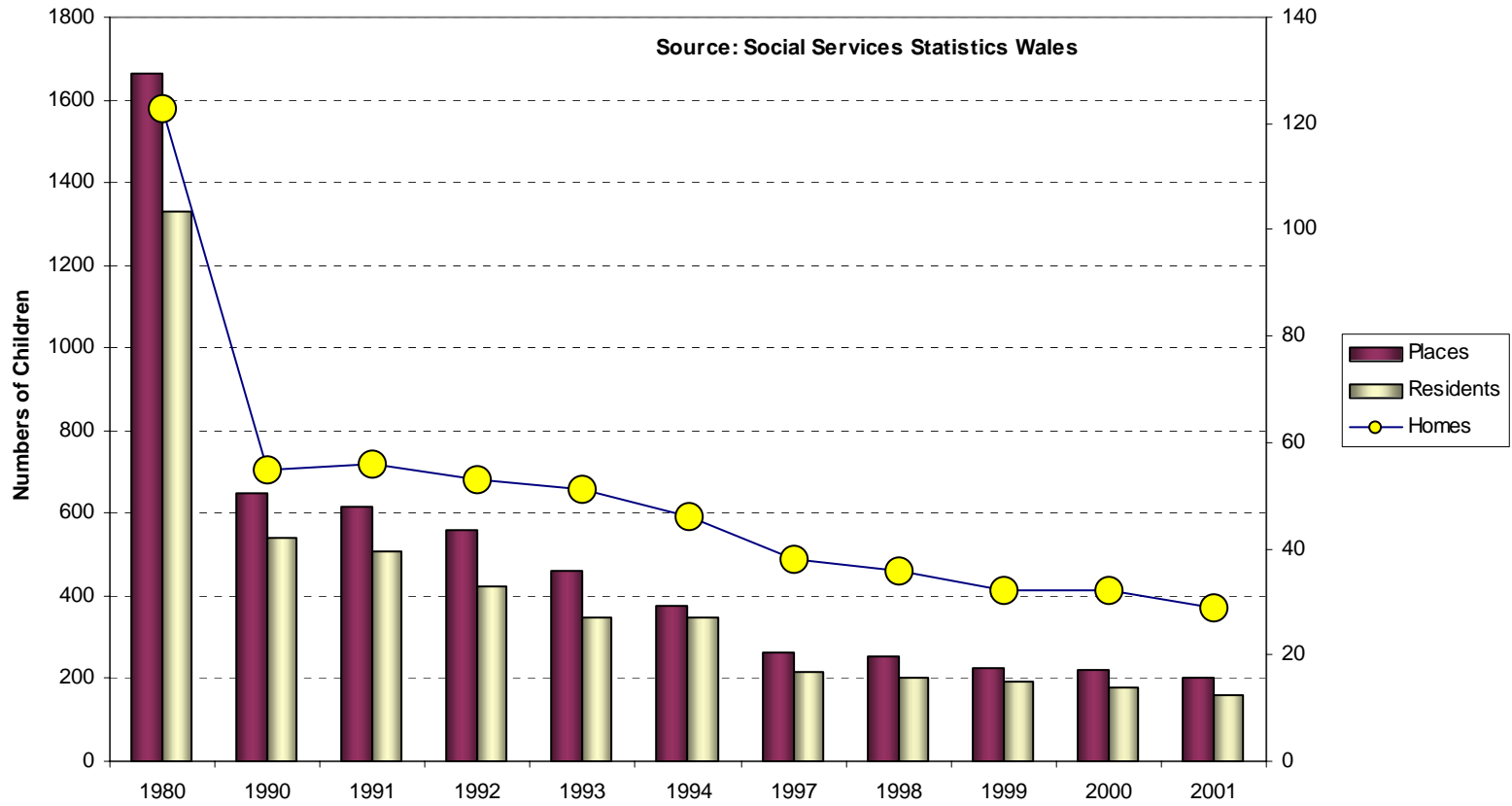


Figure 6.32 Wales: Number of Foster Parents and Places 1992-2001

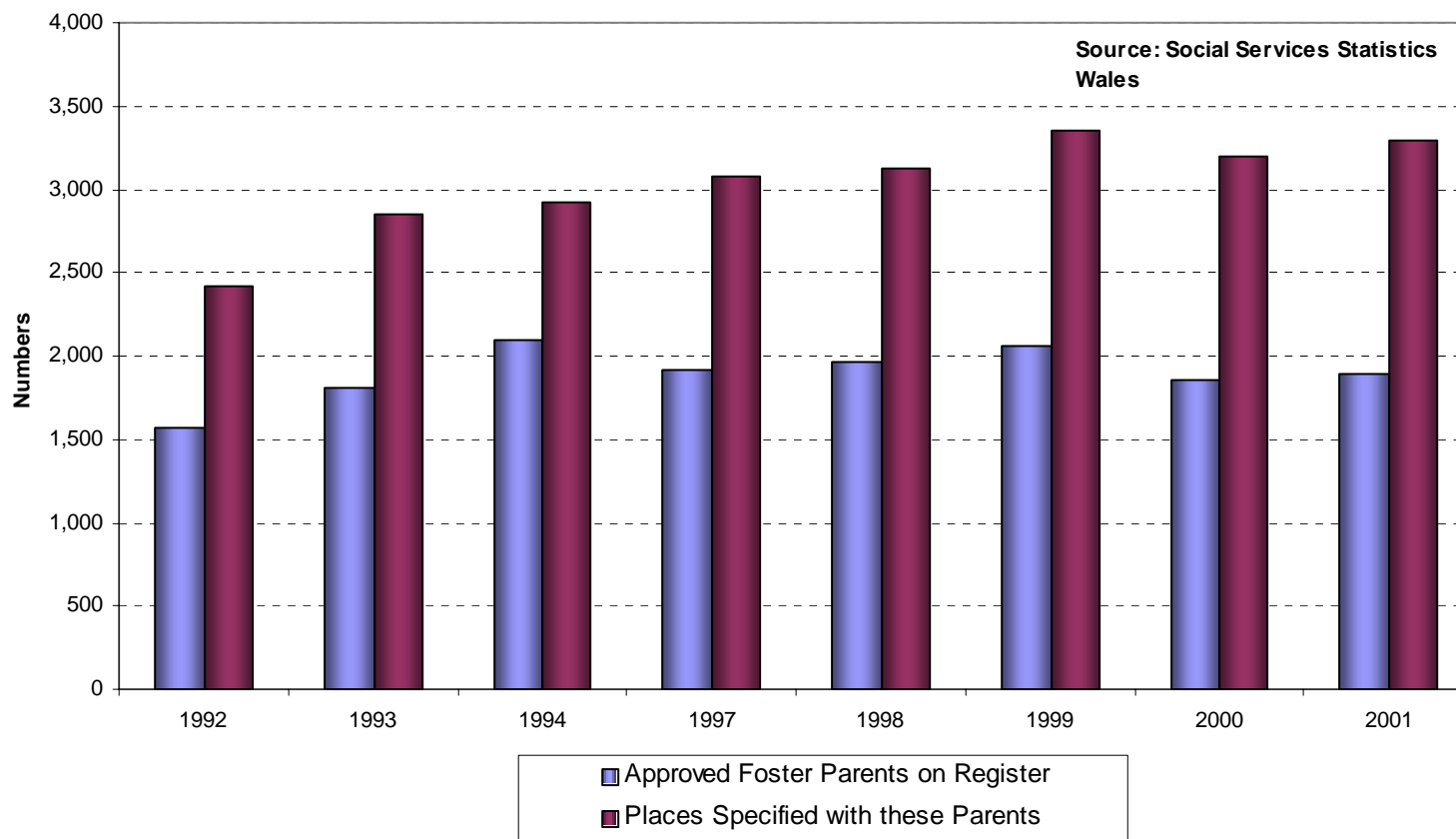


Figure 6.33 England: Looked After Children Adopted During the Years Ending 31 March 1999 to 2003

Source: Department for Education and Skills

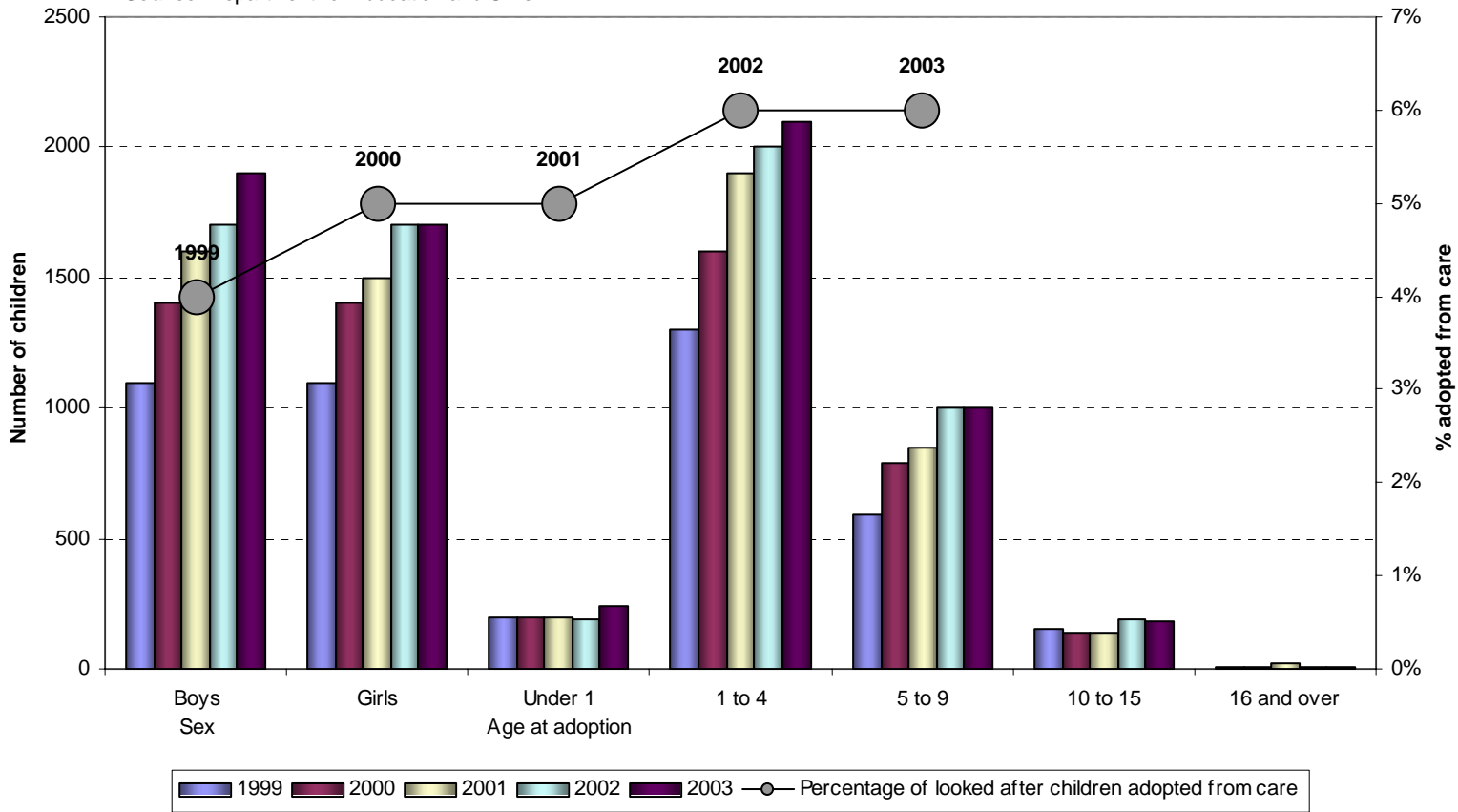


Figure 6.34 England: Long Term Stability of Children Looked After - the Percentage of Children Who Had Been Looked After Continuously for at Least 4 Years, Who Were Currently in a Foster Placement Where They Had Spent at Least 2 Years

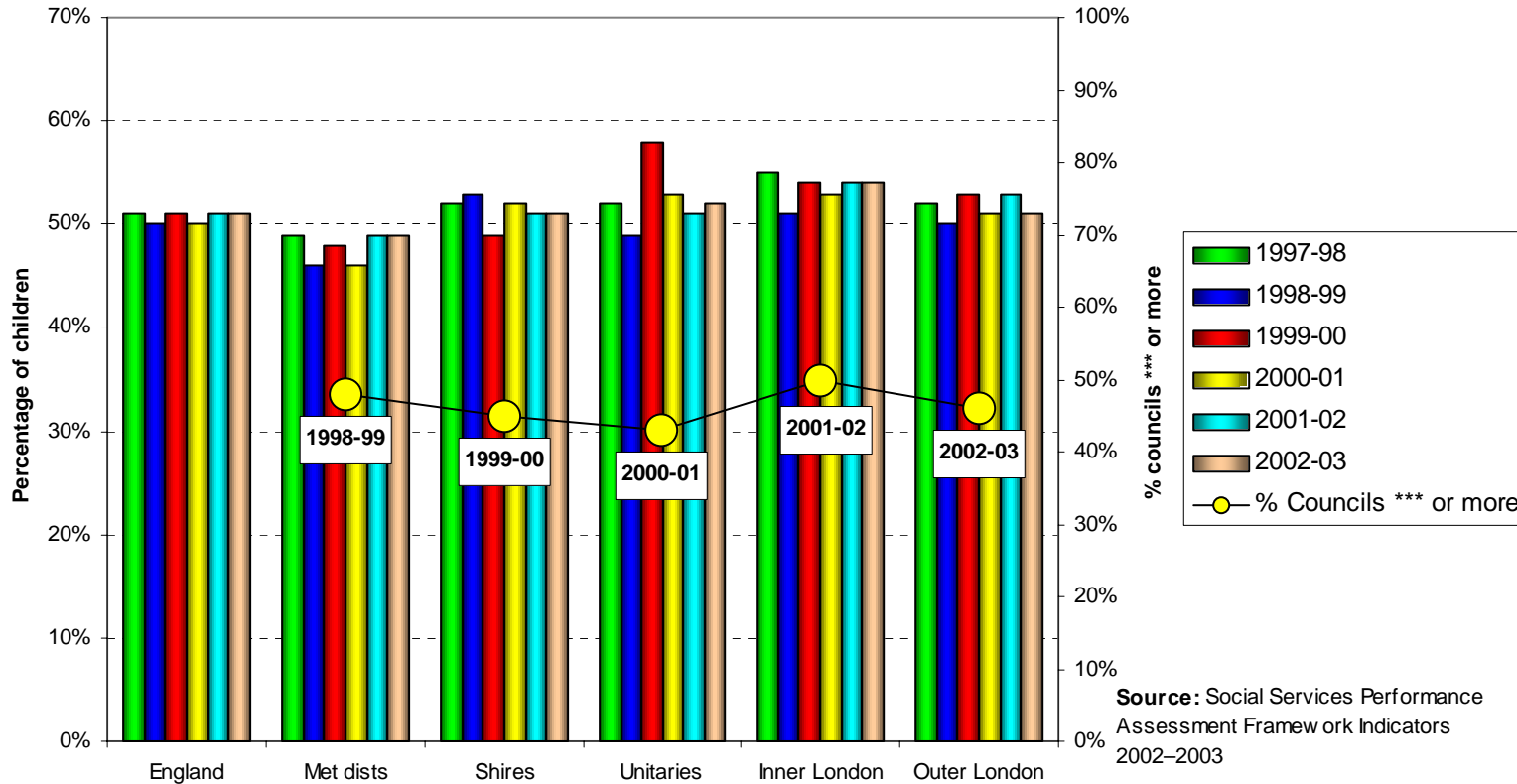
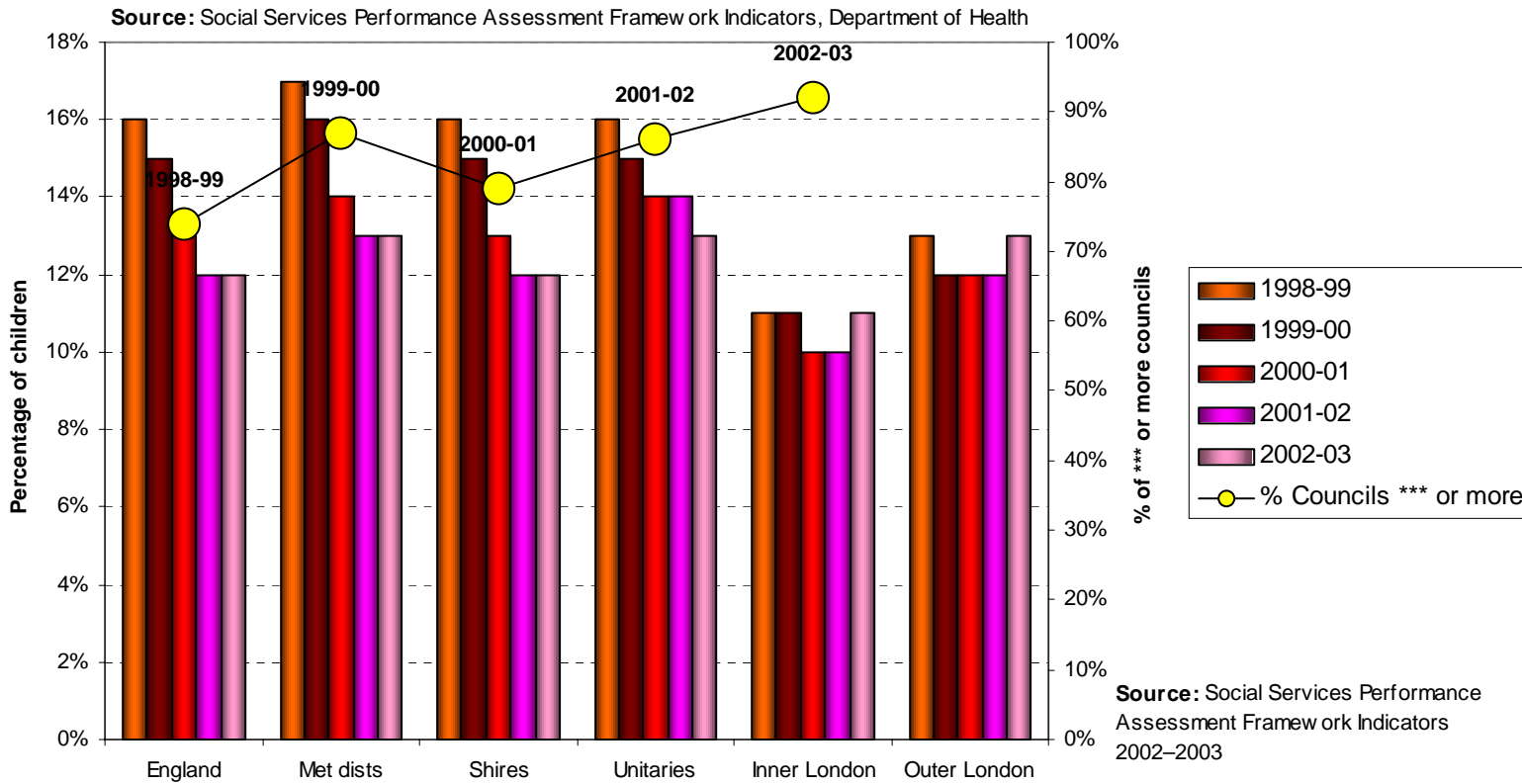


Figure 6.35 England: Stability of Placements of Children Looked After (BVPI 49) - the Percentage of Children Looked After at 31 March With Three or More Placements During the Year



**Figure 6.35 England: Average Duration of Time Between Best Interest Decision and Adoption
During the Years Ending 31 March 2001 to 2003**

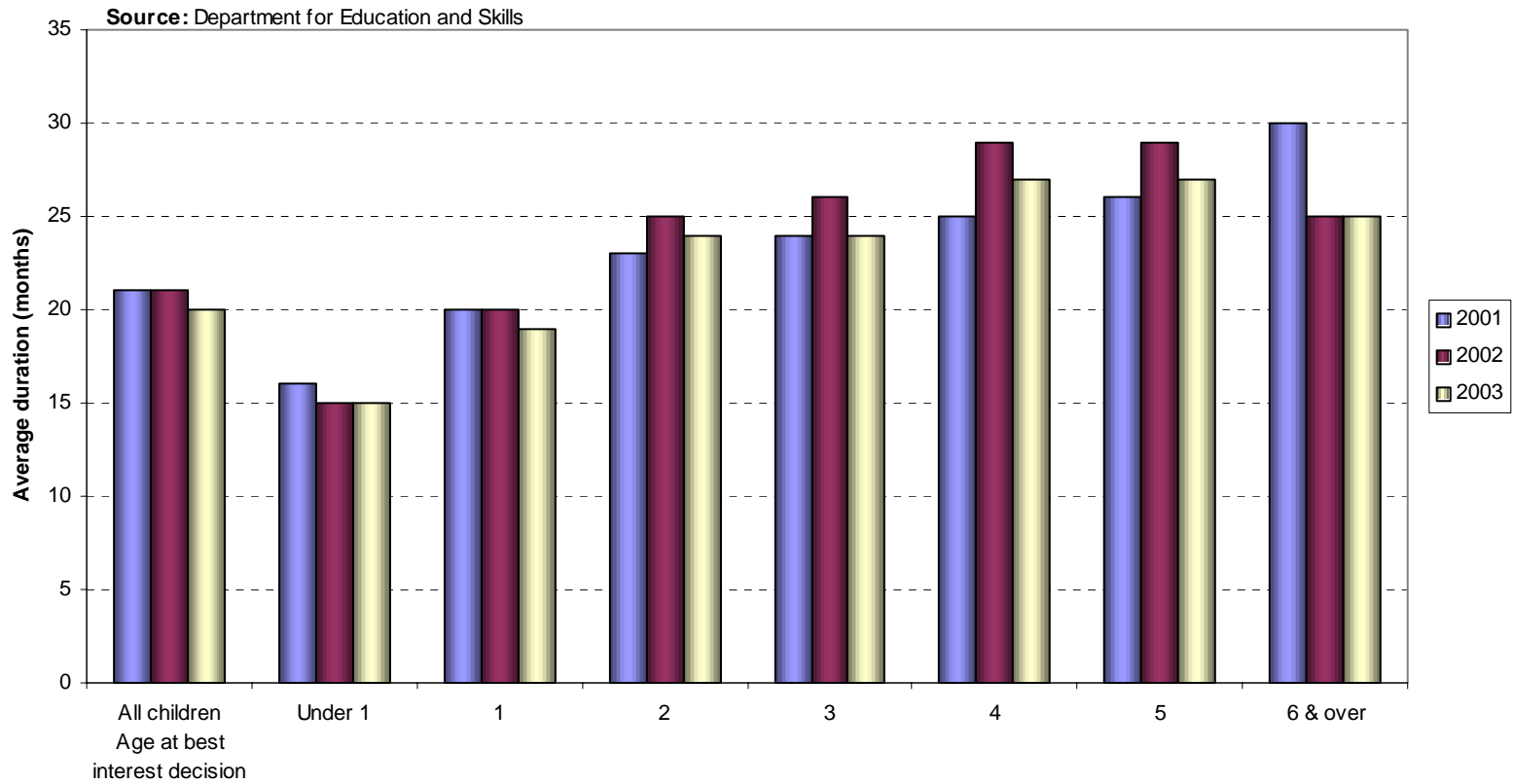


Figure 6.36 England: Reviews of Child Protection Cases (BVPI 162) - the Percentage of Child Protection Cases Which Should Have Been Reviewed During the Year That Were Reviewed

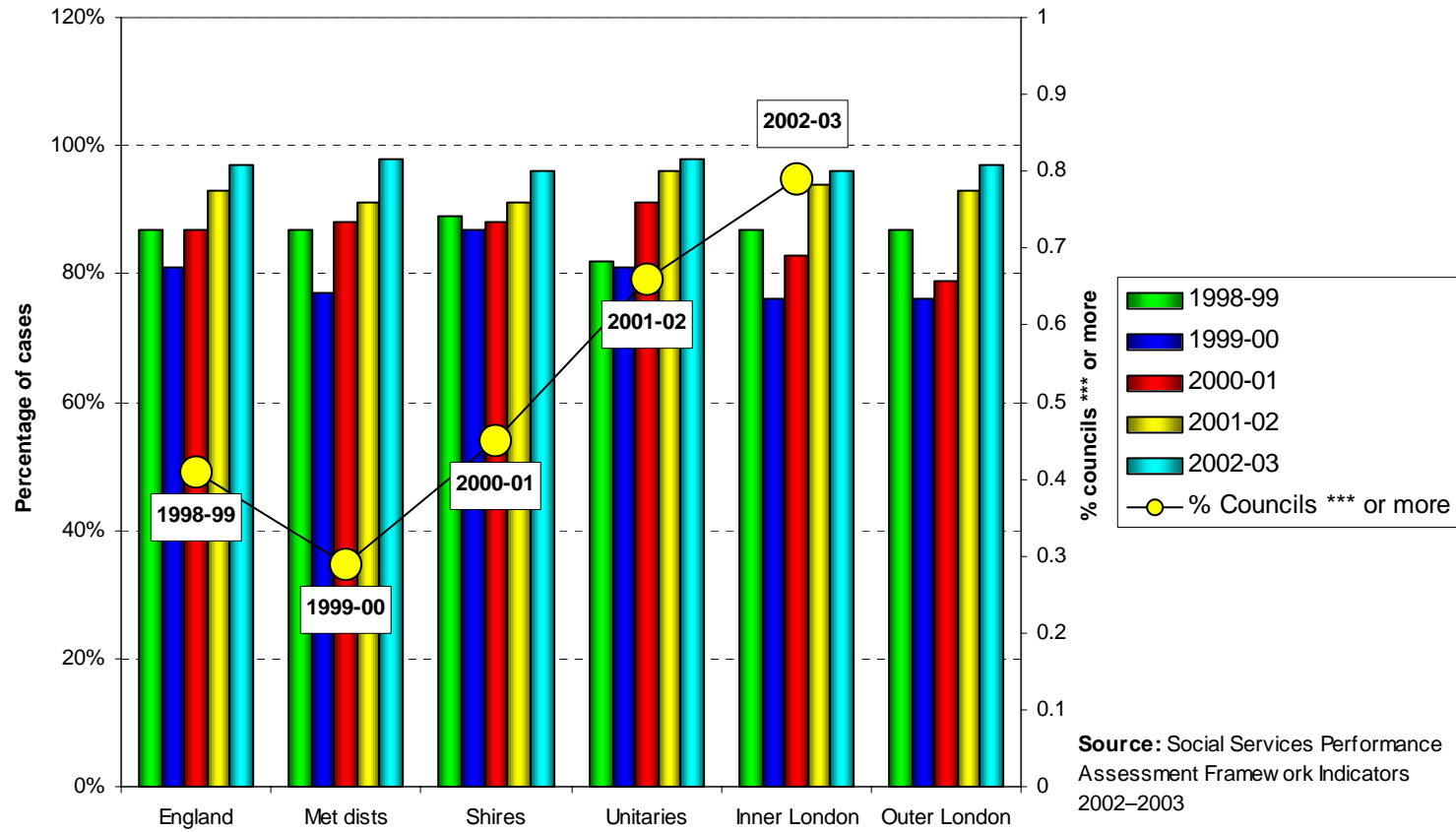


Figure 6.37 England: Health of Children Looked After

The average of the percentages of children looked after at 30 September who had been looked after continuously for at least 12 months, and who had their teeth checked by a dentist during the previous 12 months, and had an annual health assessment during the previous 12 months.

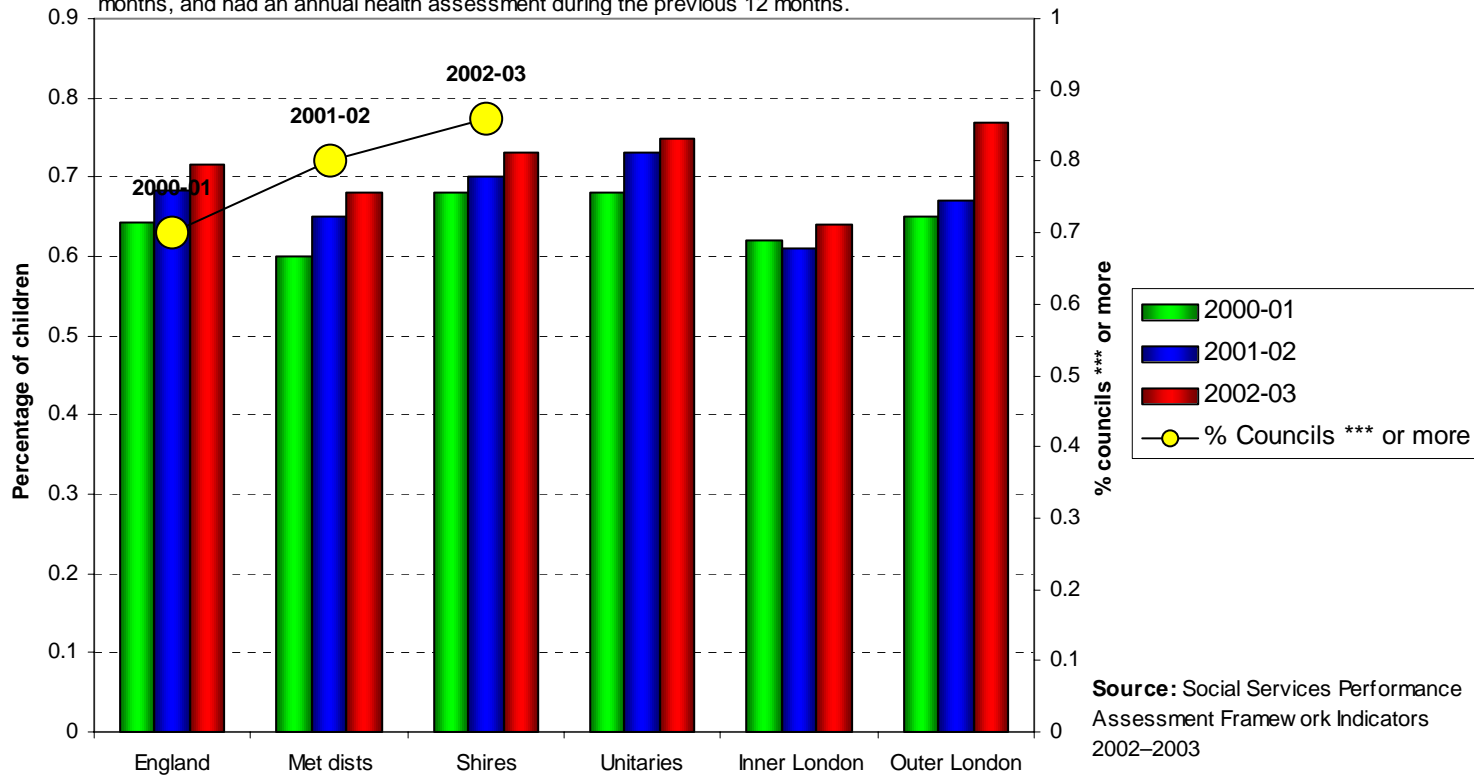


Figure 6.38 England: Children Looked After Absent From School

The percentage of children who had been looked after continuously for at least 12 months and were of school age, who missed a total of at least 25 days of schooling for any reason during the previous school year.

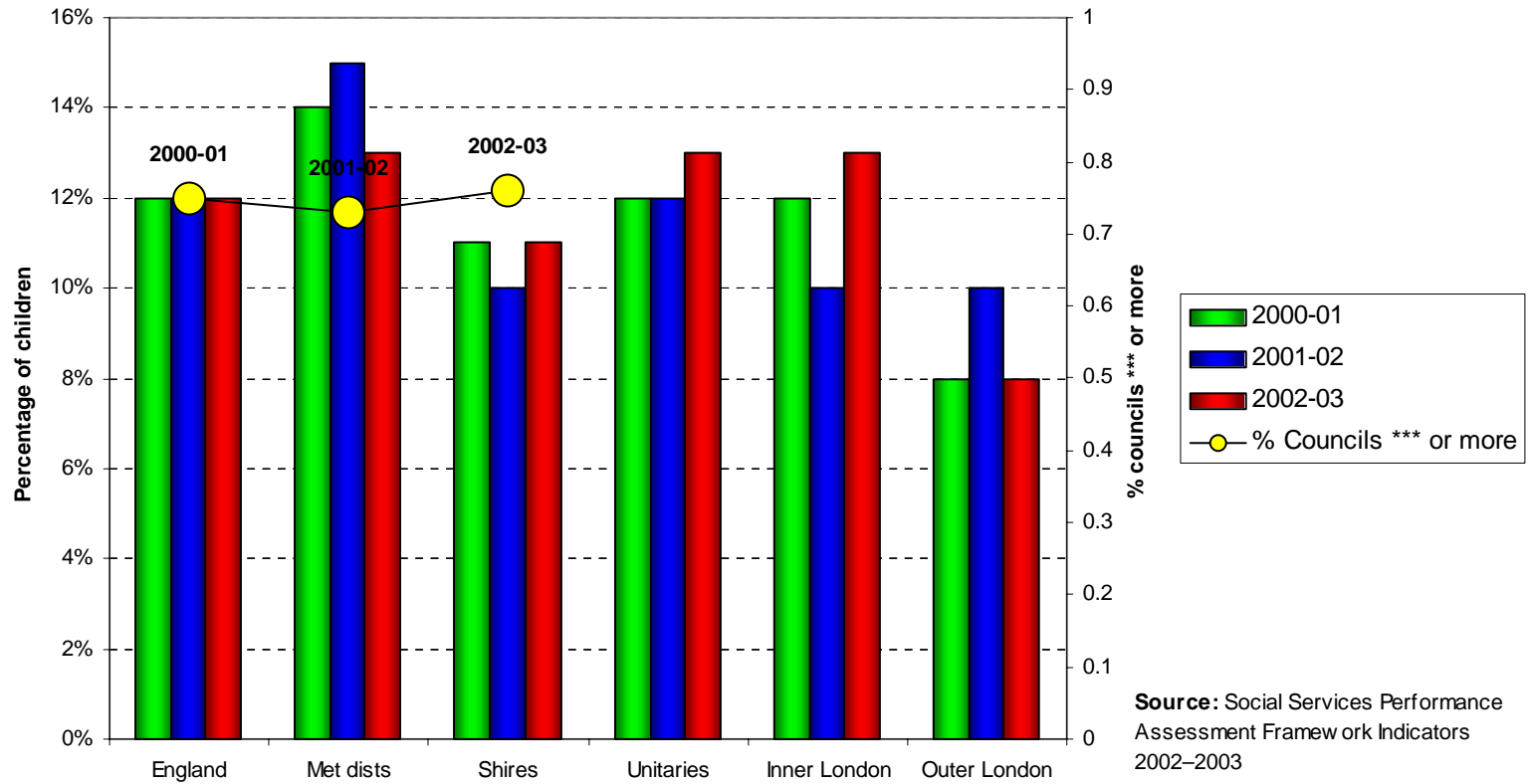
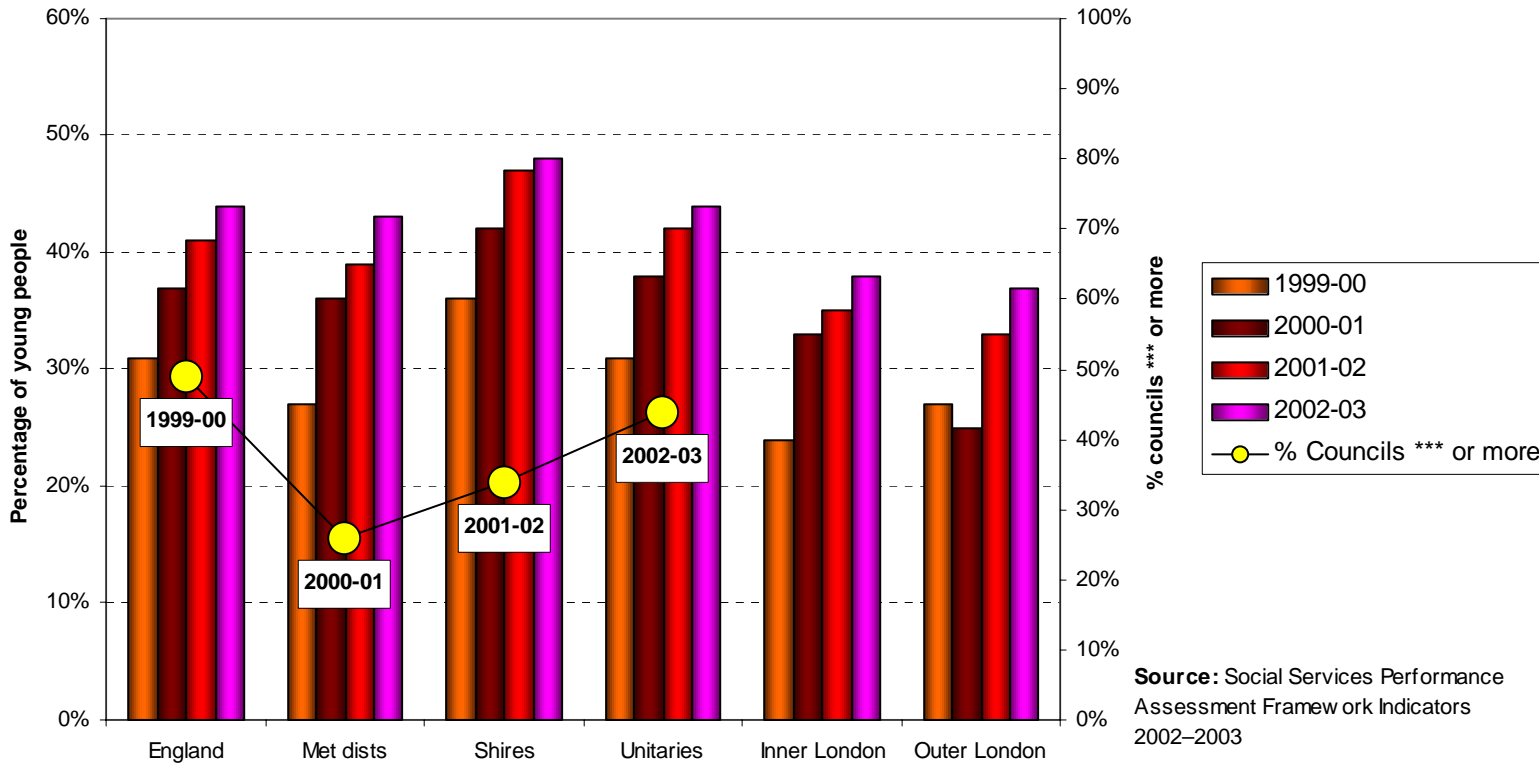
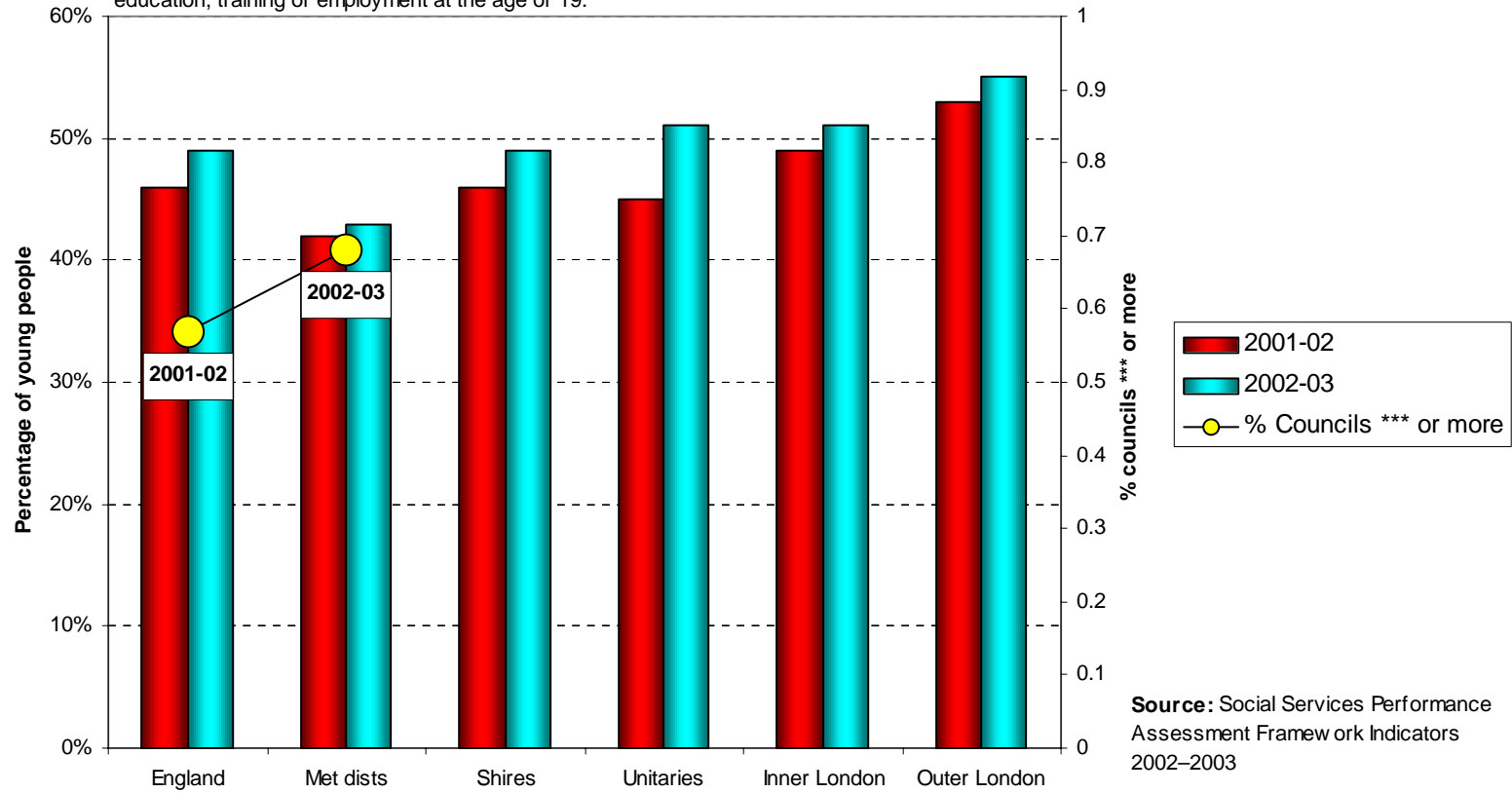


Figure 6.39 England: Educational Qualifications of Children Looked After [Joint Working] (BVPI 50) - the Percentage of Young People Leaving Care Aged 16 or Over With at Least 1 GCSE at Grade A*-G or a GNVQ



**Figure 6.40 England: Employment, Education and Training for Care Leavers [Joint Working]
(BVPI 161)**

The percentage of those young people who were looked after on 1 April in their 17th year (aged 16), who were engaged in education, training or employment at the age of 19.



Source: Social Services Performance Assessment Framework Indicators 2002-2003

